

NQZ-6R-F

New Construction Frame-In with Collar for 6" Can-less Downlights

Type

Project

Catalog No.

Notes

PRODUCT DESCRIPTION

New construction frame-in with collar can be used to assist installing can-less downlights.

Mounting: Bar hangers are adjustable from 13-3/4" to 26" with integral nails. Bar hangers are slotted for T-bar ceiling grids.

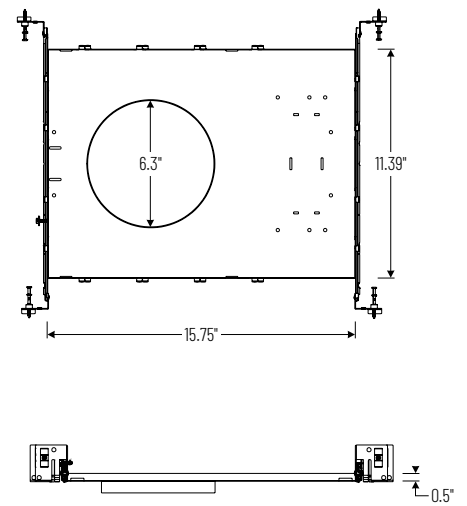
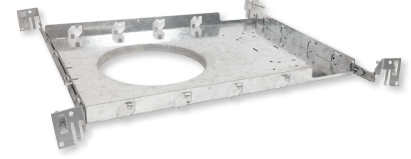
COMPATIBLE LUMINAIRE

[NEFLINTW-R6MPW](#): 6" FLIN LED Wafer LED Downlight with Selectable CCT

[NLTH-61TW](#): 6" Theia LED Downlight with Selectable CCT

[NQZ2-61WTW-MPW](#): 6" Quartz LED Downlight with Selectable Lumens & CCT

PRODUCT IMAGES AND DIMENSIONS



New Construction Frame-In

Description

NQZ-6R-F = New Construction Frame-In with Collar

Compatible Luminaires

Description

NEFLINTW-R6MPW = 6" FLIN Wafer LED Downlight / 120V input

NEFLINTW-R6MPWLE4 = 6" FLIN Wafer LED Downlight / 120-277V

NLTH-61TW-HZMPW = 6" Theia LED Downlight / Matte Powder White

NLTH-61TW-MPW = 6" Theia LED Downlight / Haze / MPW

NQZ2-61WTW-MPW = 6" Quartz LED Downlight

Example: **NQZ-6R-F** = New Construction Frame-In with Collar