

NORA[®]
LIGHTING



PEARL SERIES

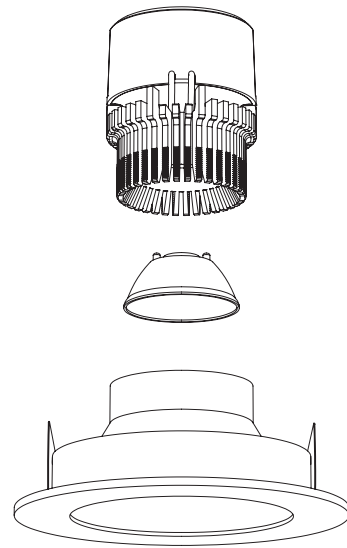
4", 5" & 6" LED RETROFIT





PEARL

LED RETROFIT



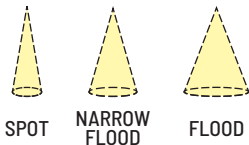
Pearl Recessed LED Retrofit luminaires are the high-end, quality solution for easy LED retrofitting in residential and light commercial applications. With a maximum height of just 4-1/2", Pearl can be retrofitted in most IC and non-IC housings—including shallow! The dimmable Pearl luminaires produce over 1200 lumens with COB LEDs or 800 lumens with Comfort Dim technology. Available in a beautiful array of fixed and adjustable styles in ten finishes, each Pearl includes three field changeable optics for maximum design control. Optional accessories can further customize the fixtures.

PEARL 120V RETROFIT SYSTEM

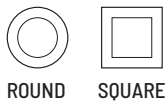
Medium Base Socket Adapter
included with each luminaire
for easy retrofitting in
recessed housings

Integral Driver
Triac / ELV dimming

Die-Cast Aluminum Heat Sink
with COB LED technology



Field Changeable Optics
Each module includes spot,
narrow flood and flood optics
(TIR optics also available)



Round or Square Trims
13 styles and 11 finishes

White Light Dimming maintains
consistent kelvin temperature
across the dimming range,
keeping colors consistent and
natural.

Comfort Dim creates an intimate
atmosphere by color tuning the
temperature from a bright 3100K
to a rich and warm 2000K as
power is reduced.


800-1200
LUMENS

Over 1200lm LED Output
2700K, 3000K, 3500K, 4000K

800lm LED Output
with Comfort Dim technology



SH Shallow Housing Compatible
Luminaires designated with the
shallow icon are compatible
with shallow plenum housings
by Nora and others.

Optional Accessories
can be added anytime between trim
and LED module



PEARL 12V RETROFIT SYSTEM



4" PEARL RETROFIT

TWELVE TRIM OPTIONS · OVER 1200LM · 2700K-4000K or COMFORT DIM

Pearl LED Retrofit series is cULus classified for use in existing IC or non-IC housings manufactured by Nora and others. 4" retrofit luminaires produce over 1200 lumen output with optimal visual cut-off. Downlight and adjustable styles aim the light source.

ELECTRICAL:

Input Voltage: 120V or 12V
Socket: Medium Base (120V) or GU5.3 (12V)
Lumens / Wattage: 1200lm / 12W (800lm w/ Comfort Dim)
Color Temperature: 2700K, 3000K, 3500K, 4000K or Comfort Dim (warm dim)
Color Rendering Index: 90+ CRI
Dimming: Triac or ELV

COMFORT DIM: Comfort Dim color tunes the temperature from a bright 3100K (120V) or 3000K (12V), to a romantic and comfortable 2000K on a gradual, even curve. Available in 800lm only.

CONSTRUCTION:

Trim/Module: Die-cast aluminum trims are threaded to mount LED module securely and dissipate heat away from light source. Three field-changeable optics are included with each luminaire: spot, narrow flood and flood (installed).

INSTALLATION: Compatible with Nora housings listed and most 4" IC and non-IC housings by others.

RETROFIT: 120V Pearl retrofit series includes medium base socket adapter (NRA-212SM) for retrofitting into existing medium base downlight housings. GU24 socket adapter is available for use with GU24 housings, must specify NRA-212SM.

LISTING & WARRANTY:

- cULus Classified for Wet Location (Adjustables are rated for damp locations)
- ROHS compliant
- 5 Year Limited Warranty
- Certified to the high efficacy requirements of California Title 24 JA8-2022

COMPATIBLE 120V HOUSINGS:

Fire Box
NFBIC-4LMRATA 120V ICAT LED Dedicated
NFBIC-427LMRATA 120V Shallow ICAT LED Dedicated
NFBIC-4INCATA 120V ICAT Line Voltage

New Construction
NSIC-4LMRAT 120V Max. Adjust. ICAT LED
NHIC-4LMRAT 120V ICAT LED Dedicated
NHIC-4LMRAT/277 277V ICAT LED Dedicated, (includes step-down transformer)
NHIC-427LMRAT 120V Shallow ICAT LED Dedicated
NSIC-401QAT 120V ICAT Line Voltage
NS-401QAT 120V AT Line Voltage
NHIC-4G24AT¹ 120V ICAT GU24

Remodel
NHRIC-4LMRAT 120V ICAT LED Dedicated
NHRIC-427LMRAT 120V Shallow ICAT LED Dedicated
NSRIC-404QAT 120V ICAT Line Voltage
NSR-404QAT 120V AT Line Voltage
NHRIC-4G24AT¹ 120V ICAT GU24

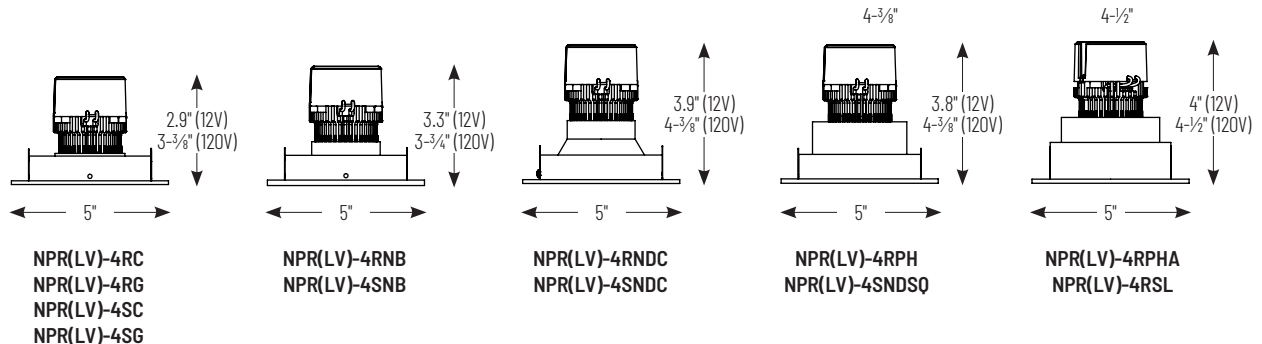
¹Requires NRA-212SM - GU24 adapter

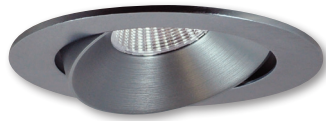


PEARL 4" LED RETROFIT

INPUT VOLTAGE	SIZE / SHAPE	TRIM TYPE	COLOR TEMPERATURE / LUMENS	FINISH
NPR 120V	4R 4" Round	C Adjustable Cone SH	27X 2700K / 1200lm	BB Black / Black Flange
NPRLV 12V	4S 4" Square	G Adjustable Gimbal SH	30X 3000K / 1200lm	BMPW Black / Matte Powder White Flange
		NB Non-Adj. Bullnose WET	35X 3500K / 1200lm	BW Black / White Flange
		NDC Reflector w/Round Aperture WET	40X 4000K / 1200lm	BZ Bronze / Bronze Flange
		PH Non-Adj. Pinhole WET	CDX Comfort Dim / 800lm	CHMPW Champagne Haze / Matte Powder White Flange
		PHA Adjustable Pinhole		CMPW Specular Clear / Matte Powder White Flange
		SL Adjustable Slot Aperture		HW Haze / White Flange
		NDSQ Reflector w/Square Aperture WET		HZMPW Haze / Matte Powder White Flange
				MPW Matte Powder White / Matte Powder White Flange
				NN Natural Metal / Nat. Metal Flange
				WW White / White Flange

Example: **NPR-4RC30XWW** - 4" 120V Round Adjustable Cone Retrofit, 3000K / 1200lm, White Reflector with White Flange





SH NPR-4RC (120V)
SH NPRLV-4RC (12V)
 4" Round Adjustable Cone Regress
 BB, BW, BZ, CHMPW, CMPW,
 HW, HZMPW, MPW, NN, WW
 10°-35° Adjustable (determined by housing)



WET

NPR-4RNB (120V)
NPRLV-4RNB (12V)
 4" Round Bullnose
 BB, BZ, MPW, NN, WW
 Non-Adjustable



WET

NPR-4RPH (120V)
NPRLV-4RPH (12V)
 4" Round Pinhole
 BB, BMPW, HZMPW, MPW
 Non-Adjustable



SH NPR-4SC (120V)
SH NPRLV-4SC (12V)
 4" Square Adjustable Cone Regress
 BB, BW, BZ, CHMPW, CMPW,
 HW, HZMPW, MPW, NN, WW
 10°-35° Adjustable (determined by housing)



WET

NPR-4SNB (120V)
NPRLV-4SNB (12V)
 4" Square Bullnose
 BB, BZ, MPW, NN, WW
 Non-Adjustable



NPR-4RPHA (120V)
NPRLV-4RPHA (12V)
 4" Round Adjustable Pinhole
 BB, BMPW, HZMPW, MPW, WW
 30° Adjustable (12V = 15°)



SH NPR-4RG (120V)
SH NPRLV-4RG (12V)
 4" Round Adjustable Gimbal
 BB, BZ, MPW, NN, WW
 10°-35° Adjustable (determined by housing)

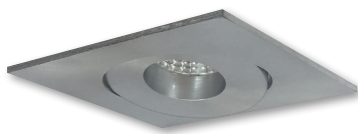


WET

NPR-4RND (120V)
NPRLV-4RND (12V)
 4" Round Reflector w/ Round Aperture
 BB, BW, BZ, CHMPW, CMPW,
 HW, HZMPW, MPW, NN, WW
 Non-Adjustable



NPR-4RSL (120V)
NPRLV-4RSL (12V)
 4" Round Slot Aperture
 BB, BMPW, HZMPW, MPW
 30° Adjustable (12V = 15°)



SH NPR-4SG (120V)
SH NPRLV-4SG (12V)
 4" Square Adjustable Gimbal
 BB, BZ, MPW, NN, WW
 10°-35° Adjustable (determined by housing)



WET

NPR-4SND (120V)
NPRLV-4SND (12V)
 4" Square Reflector w/ Round Aperture
 BB, BW, BZ, CHMPW, CMPW,
 HW, HZMPW, MPW, NN, WW
 Non-Adjustable



WET

NPR-4SND (120V)
NPRLV-4SND (12V)
 4" Square Reflector w/ Square Aperture
 BB, BW, BZ, CHMPW, NN, HW, HZMPW, MPW, WW
 Non-Adjustable

SH designates reflectors compatible with shallow housings

FINISHES

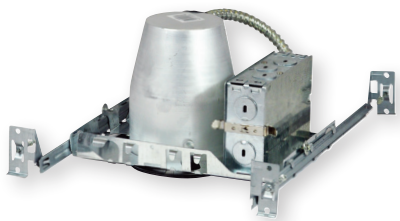


120V PEARL COMPATIBLE 4" NORA HOUSINGS

RETROFIT FOR ANY APPLICATION

120V LED Retrofit luminaires are compatible with most IC and non-IC housings by Nora and others including shallow plenum.

When retrofitting into a shallow housing, specify Pearl reflector designated with SH icon.



120V New Construction Housings

NHIC-4LMRAT ICAT LED Dedicated
NHIC-4LMRAT/277 ICAT LED Dedicated, 277V
NS-401QAT AT Line Voltage

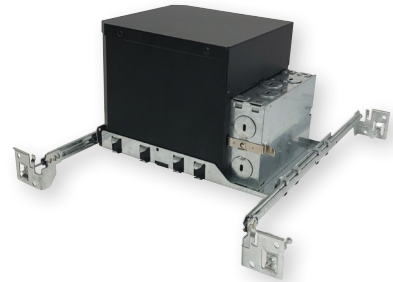
New construction applications with standard plenum ceilings.



120V Shallow New Construction Housings

SH NHIC-427LMRAT Shallow ICAT LED Dedicated

3-1/2" IC Air-Tight Shallow new construction housing allows for installations in shallow plenums.



120V Maximum Adjustability ICAT Housing

NSIC-4LMRAT Max Adjustability ICAT LED Dedicated

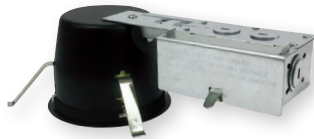
New construction housing allows reflectors to adjust up to 35°. Accommodates ceilings up to 1.75" thick with NSIC-4EXTC2 collar.



120V Remodel Housings

NHRIC-4LMRAT ICAT LED Dedicated
NSRIC-404QAT ICAT Line Voltage
NSR-404QAT AT Line Voltage
NHRIC-4G24AT ICAT GU24 (req. NRA-212SM)

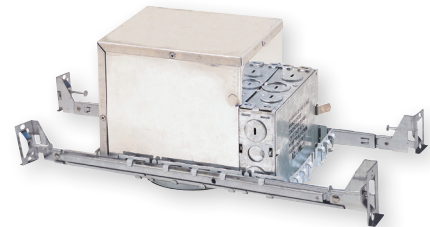
Remodel applications for standard plenum ceilings.



120V Shallow Remodel Housings

SH NHRIC-427LMRAT Shallow ICAT LED Dedicated

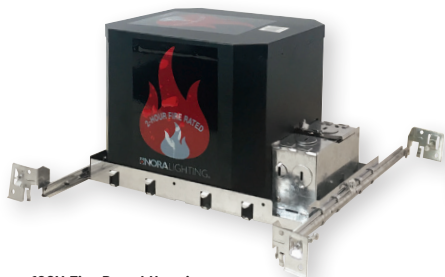
3-1/2" IC Air-Tight Shallow remodel housing allows for installations in existing shallow plenums.



120V New Construction ICAT Double Wall Housing

NSIC-401QAT ICAT Line Voltage

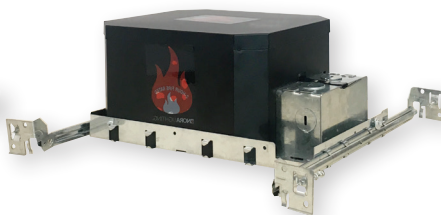
Rated for direct contact with insulation (not spray foam or combustible materials).



120V Fire Rated Housings

NFBIC-4LMRATA Fire Rated LED Dedicated
NFBIC-4INCATA Fire Rated Line Voltage

cULus listed housing is fire rated for a minimum of two hours protection.



120V Shallow Fire Rated Housings

SH NFBIC-427LMRATA Shallow Fire Rated LED Dedicated

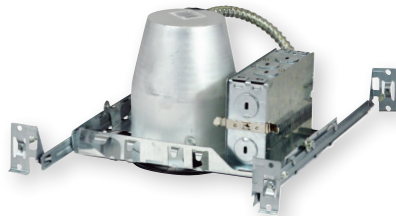
4-13/16" Fire rated new construction housing allows for installations in shallow plenums. cULus listed housing is fire rated for a minimum of two hours protection.

12V PEARL COMPATIBLE 4" NORA HOUSINGS

RETROFIT FOR GU5.3 SOCKETS

12V LED Retrofit luminaires are compatible with most IC and non-IC housings by Nora and others including shallow plenum.

When retrofitting into a shallow housing, specify Pearl reflector designated with SH icon.



12V New Construction Housings

NLIC-401AT/1EL	ICAT 120V/12V Electronic
NLIC-401AT/2EL	ICAT 277V/12V Electronic
NLIC-401QSAT	ICAT 120V/12V Magnetic
NL-401AT/1EL	AT 120V/12V Electronic
NL-401QAT	AT 120V/12V Magnetic

New construction applications with standard plenum ceilings.



12V Remodel Housings

NLR-404AT/1EL	AT 120V/12V Electronic
NLR-404AT/2EL	AT 277V/12V Electronic
NLR-404QAT	AT 120V/12V Magnetic

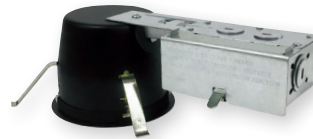
Remodel applications for standard plenum ceilings.



12V Shallow New Construction Housings

SH NL-402S	Shallow 120V/12V Magnetic
SH NL-402S/1EL	Shallow 120V/12V Electronic

3-1/2" IC Air-Tight Shallow new construction housing allows for installations in shallow plenums.



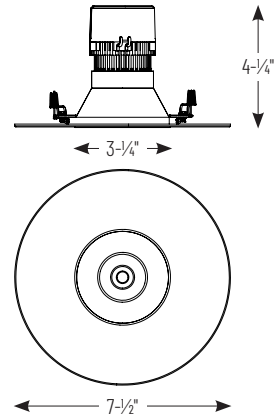
12V Shallow Remodel Housings

SH NLR-403S	Shallow 120V/12V Magnetic
SH NLR-403S/1EL	Shallow 120V/12V Electronic

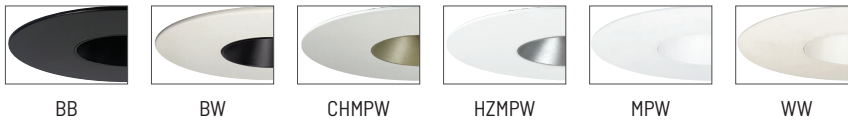
3-1/2" IC Air-Tight Shallow remodel housing allows for installations in existing shallow plenums.

5"/6" PEARL RETROFIT

OVER 1200LM · 2700K-4000K or COMFORT DIM



FINISHES



Pearl LED Retrofit series is cULus classified for use in existing IC or non-IC housings manufactured by Nora and others. 5"/6" retrofit luminaires produce over 1200 lumen output with optimal visual cut-off.

ELECTRICAL:

Input Voltage: 120V or 12V

Socket: Medium Base (120V) or GU5.3 (12V)

Lumens / Wattage: 1200lm / 12W (800lm w/ Comfort Dim)

Color Temperature:

2700K, 3000K, 3500K, 4000K or Comfort Dim (warm dim)

Color Rendering Index: 90+ CRI

Dimming: Triac or ELV

COMFORT DIM: Comfort Dim color tunes the temperature from a bright 3100K (120V) or 3000K (12V), to a romantic and comfortable 2000K on a gradual, even curve. Available in 800lm only.

CONSTRUCTION:

Trim/Module: Die-cast aluminum trims are threaded to mount LED module securely and dissipate heat away from light source. Three field-changeable optics are included with each luminaire: spot, narrow flood and flood (installed).

INSTALLATION: Compatible with Nora housings listed and most 5" and 6" IC or non-IC housings.

RETROFIT: 120V Pearl retrofit series includes medium base socket adapter (NRA-211SM) for retrofitting into existing medium base downlight housings. GU24 socket adapter is available for use with GU24 housings, must specify NRA-212SM.

LISTING & WARRANTY:

- cULus Classified for Wet Location
- ROHS compliant
- 5 Year Limited Warranty
- Certified to the high efficacy requirements of California Title 24 JA8-2022

COMPATIBLE 120V HOUSINGS:

Fire Box

NFBIC-5LMRATA	5" 120V ICAT LED Dedicated
NFBIC-5INCATA	5" 120V ICAT Line Voltage
NFBIC-6LMRATA	6" 120V ICAT LED Dedicated
NFBIC-6INCATA	6" 120V ICAT Line Voltage

New Construction

NHIC-5LMRAT	5" 120V ICAT LED Dedicated
NHIC-5LMRAT/277	5" 277V ICAT LED Dedicated (includes step-down transformer)
NHIC-527LMRAT	5" 120V Shallow ICAT LED Dedicated
NHIC-501QAT	5" 120V ICAT Line Voltage
NHIC-527QAT	5" 120V Shallow ICAT Line Voltage
NHIC-6LMRAT	6" 120V ICAT LED Dedicated
NHIC-6LMRAT/277	6" 277V ICAT LED Dedicated (includes step-down transformer)
NHICCP-6LMRAT	6" 120V Chicago Plenum LED Dedicated
NHIC-27LMRAT	6" 120V Shallow ICAT LED Dedicated
NHIC-17QAT	6" 120V ICAT Line Voltage
NHIC-27QAT	6" 120V Shallow ICAT Line Voltage
NH-26Q	6" 120V Non-IC Line Voltage
NHIC-6G24ATFL ¹	6" 120V ICAT GU24

Remodel

NHRIC-5LMRAT	5" 120V ICAT LED Dedicated
NHRIC-527LMRAT	5" 120V Shallow ICAT LED Dedicated
NHRIC-504QAT	5" 120V ICAT Line Voltage
NHRIC-527QAT	5" 120V Shallow ICAT Line Voltage
NHRIC-6LMRAT	6" 120V ICAT LED Dedicated
NHRIC-27LMRAT	6" 120V Shallow ICAT LED Dedicated
NHRIC-17QAT	6" 120V ICAT Line Voltage
NHRIC-27QAT	6" 120V Shallow ICAT Line Voltage
NHR-26Q	6" 120V Non-IC Line Voltage
NHR-27Q	6" 120V Shallow Non-IC Line Voltage

¹Requires NRA-212SM - GU24 adapter



PEARL 5"/6" LED RETROFIT

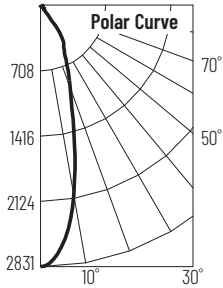
INPUT VOLTAGE	COLOR TEMPERATURE	REFLECTOR FINISH / FLANGE FINISH
NPR-56RNDC 120V	27X 2700K	BB Black
NPRLV-56RNDC 12V	30X 3000K	BW Black / White Flange
	35X 3500K	CHMPW Champagne Haze / Matte Powder White Flange
	40X 4000K	HZMPW Haze / Matte Powder White Flange
	CDX Comfort Dim	MPW Matte Powder White
		WW White

Example: **NPR-56RNDC30XWW** - 5"/6" 120V Retrofit, 3000K / 1200lm, White Reflector / White Flange

5"/6" PEARL SERIES PHOTOMETRICS

ROUND DOWNLIGHT: 1200LM / 4000K / 29° SPOT

Item Number: NPR-56RNDC40XWW
 Lumens: 1218lm Wattage: 11.89W Efficacy: 102lpw



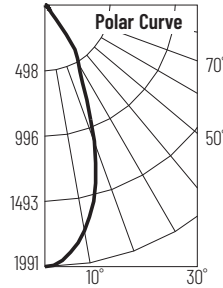
Zone	Lumens	% Luminaire
0-30	928	76.2
0-40	1122	92.1
0-60	1194	98.1
0-90	1218	100

Vertical Angles	Candela
0	2831
15	1324
25	716
35	346
45	58

Distance from Luminaire	FC at Nadir	Beam Diameter
4'	177fc	2'
6'	78.7fc	3'
8'	44.2fc	4'-1"
10'	28.3fc	5'-1"
12'	19.7fc	6'-1"

ROUND DOWNLIGHT: 1200LM / 4000K / 44° NFL

Item Number: NPR-56RNDC40XWW
 Lumens: 1225lm Wattage: 11.91W Efficacy: 103lpw



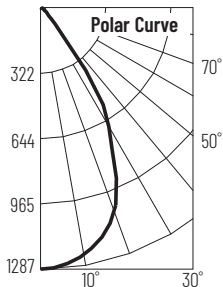
Zone	Lumens	% Luminaire
0-30	932	76.1
0-40	1128	92.1
0-60	1200	98
0-90	1225	100

Vertical Angles	Candela
0	1991
15	1444
25	771
35	338
45	55

Distance from Luminaire	FC at Nadir	Beam Diameter
4'	124fc	3'-2"
6'	55.3fc	4'-10"
8'	31.1fc	6'-5"
10'	19.9fc	8'
12'	13.8fc	9'-7"

ROUND DOWNLIGHT: 1200LM / 4000K / 61° FLOOD

Item Number: NPR-56RNDC40XWW
 Lumens: 1200lm Wattage: 11.94W Efficacy: 100lpw



Zone	Lumens	% Luminaire
0-30	838	69.9
0-40	1089	90.8
0-60	1173	97.8
0-90	1200	100

Vertical Angles	Candela
0	1287
15	1146
25	875
35	431
45	65

Distance from Luminaire	FC at Nadir	Beam Diameter
4'	122fc	3'-1"
6'	54fc	4'-8"
8'	30.4fc	6'-4"
10'	19.4fc	7'-10"
12'	13.5fc	9'-5"



NORA LIGHTING, INC.
6505 Gayhart St.
Commerce, CA 90040
TEL 323.767.2600
FAX 323.722.3677
www.NoraLighting.com

DOMESTIC FACILITIES:

Atlanta, GA
Cincinnati, OH
Dallas, TX
Detroit, MI
Edison, NJ
Los Angeles, CA
Louisville, KY
Minneapolis, MN
Nashville, TN

INTERNATIONAL SALES:

6505 Gayhart St.
Commerce, CA 90040
TEL 323.767.2600
FAX 323.722.3677

The products shown in this catalog
are covered by USA and International
patents. Specifications subject to
change without notice.

© Copyright 2024 Nora Lighting, Inc.
All rights reserved

