

NIO-4PRTLND

4" Iolite PLUS Round Trimless Downlight

Source: 20W to 28W LED

Up to 2800lm

Type

Project

Catalog No.

Notes

PRODUCT DESCRIPTION

4" PLUS Trimless Iolite downlights have no exposed flange and do not extend beyond the ceiling plane. Iolite PLUS Trimless requires a PLUS Trimless Mud Ring and New Construction housing. Deep regressed cone reflectors optimize visual cut-off.

FEATURES

- Trimless knife edge appearance
- Delivering up to 2800 lumens
- 2700K, 3000K, 3500K, 4000K, 5000K @ 90+ CRI
- Flood optic, narrow flood and spot optics (included)
- 5-Year limited warranty

SPECIFICATION

Construction: Die-cast aluminum transfers heat from cold forged LED heat sink to maintain optimal performance.

Mounting: Luminaire includes stainless steel friction clips to mount securely to trimless mud ring. Mud ring is required per trimless downlight.

OPTICS

Each luminaire includes field changeable TIR optics (41° spot, 69° flood and 52° narrow flood - preinstalled).

ELECTRICAL

Delivered Lumens / Wattage	Up to 2050lm / 20W	Up to 2450lm / 24W	Up to 2800lm / 28W
Color Temperature	2700K, 3000K, 3500K, 4000K, 5000K		
Color Rendering Index	90+ CRI		
Compatible Housing	NHIOICD-415 NHIOICDCP-415	NHIOICD-420 NHIOICDCP-420	NHIOICD-425 NHIOICDCP-425
Lifetime	50,000 hours @ L70		

Accessories: Luminaires will accommodate (1) translucent deco collar or opaque snoot, no accessory holder is required, see page 2. A mud ring ([NIO-TLMR-4PR](#)) or flange accessory ([NIO-4PRTFA](#)) is required per trimless.

LABELS AND LISTINGS

- cULus Listed for Damp Locations
- ENERGY STAR certified
- [5-Year Limited Warranty](#)
- RoHS Compliant
- Certified to the high efficacy requirements of California Title 24 JA8-2022

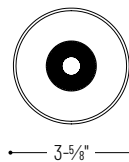
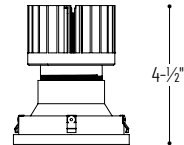


Performance Data

Optic	1500lm	2000lm	2500lm	CCT
Spot	1947lm	2309lm	2617lm	4000K
Narrow Flood	2083lm	2452lm	2834lm	4000K
Flood	1764lm	2075lm	2401lm	4000K

Delivered lumens will vary depending on optic, finish and CCT

PRODUCT IMAGES AND DIMENSIONS



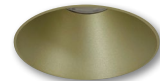
NIO-4PRTLND
PLUS Round Trimless Reflector



BB
Black Reflector



BZ
Bronze Reflector



CH
Champagne Reflector



HZ
Haze Reflector



MPW
Matte Powder White Reflector



WW
White Reflector

4" Iolite PLUS Round Trimless Downlight - New Construction Housing & Trimless Mud Ring Required

Reflector Type	Color Temperature	Finish	Lumens / Wattage
NIO-4PRTLND = PLUS Round Trimless Downlight	27X = 2700K 30X = 3000K 35X = 3500K 40X = 4000K 50X = 5000K	BB = Black BZ = Bronze CH = Champagne Haze HZ = Haze MPW = Matte Powder White WW = White	/HL = 1500lm to 2500lm (varies by housing)

Compatible Housings

Housing Type
NHIOICD-415 = ICAT New Construction / 1500lm / 20W
NHIOICDCP-415 = Chicago Plenum / 1500lm / 20W
NHIOICD-420 = Chicago Plenum / 2000lm / 20W
NHIOICDCP-420 = ICAT New Construction / 2000lm / 24W
NHIOICD-425 = Chicago Plenum / 2500lm / 28W
NHIOICDCP-425 = ICAT New Construction / 2500lm / 28W

4" PLUS Trimless Mud Ring

Description
NIO-TLMR-4PR = 4" PLUS Round Trimless Mud Ring

Example: **NIO-4PRTLND27XWW/HL** & **NIO-TLMR-4PR** = 4" Iolite PLUS Round Trimless Downlight, 2700K, White finish / 4" PLUS Round Trimless Mud Ring

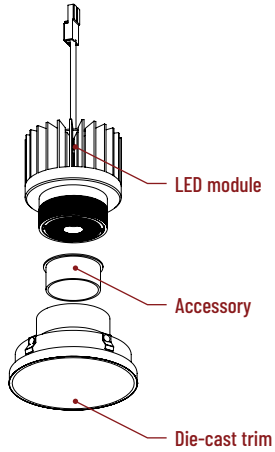
Iolite PLUS Accessories

4" Iolite PLUS Round Trimless Reflector

Type
Project
Catalog No.
Notes

ACCESSORIES

Iolite accessories can be added at any point in the design process. Accessories easily install between LED module and die-cast trim. Luminaire will accommodate (1) hex lower and (1) collar accessory, no accessory holder required.



Translucent Decorative Collar

NIO-AS14(color) 5/8" length
NIO-AS19(color) 3/4" length
NIO-AS26(color) 1" length
Color:
AM (amber), **BLU** (blue), **FR** (frosted), **R** (red)

Translucent collars color the aperture with the specified color while producing white general light. Collars are available in different lengths. Use to add interest, create a theme, match a theme or define a space.

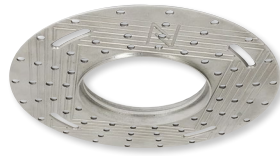
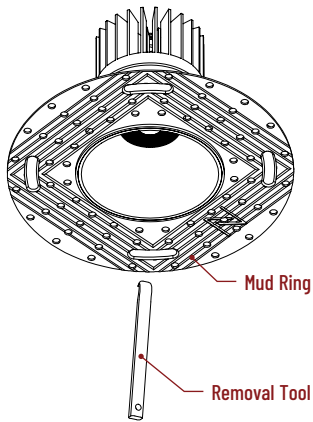
Opaque Collar Snoot

NIO-AS14(color) 5/8" length
NIO-AS19(color) 3/4" length
NIO-AS26(color) 1" length
Color:
MPW (matte powder white), **WH** (white)

Opaque snoot greatly reduces aperture brightness while preserving light output.

TRIMLESS

4" Iolite PLUS trimless downlights have no exposed flange and the result is a minimalist knife edge appearance. A trimless mud ring is installed after the drywall and a professional drywall finisher floats the ceiling to blend in the mud ring.



Iolite PLUS Trimless Mud Ring

NIO-TLMR-4PR Round Mud Ring

Mounts trimless downlight with no exposed flange and no extension beyond ceiling plane. Die-cast aluminum mud ring attaches to drywall. **Only for use with NHIOICD-4 new construction housings and NIO-4PRTL trimless.**
 Dimensions: 7-7/8" diameter 3/8" thick



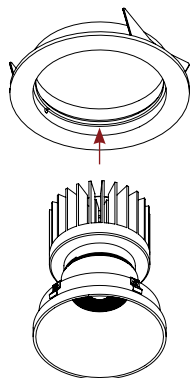
Removal Tool

NIO-TLTOOL

Assist removing trimless reflector from finished ceiling after installation. For maintenance on trimless downlight. One is included with each luminaire.

FLANGE ACCESSORY

4" Iolite trimless can be converted into flanged trim. Flange accessory allows trim to be used with remodel and new construction housings. Accessory does not require mud ring or professional drywall installation.



Flange Accessory

NIO-4RTFABB Black Flange
NIO-4RTFABZ Bronze Flange
NIO-4RTFACH Champagne Haze Flange
NIO-4RTFAHZ Haze Flange
NIO-4RTFAMPW Matte Powder White Flange
NIO-4RTFAWH White Flange

PHOTOMETRICS

4" Iolite PLUS Round Trimless Downlight 1500 lumens

Type

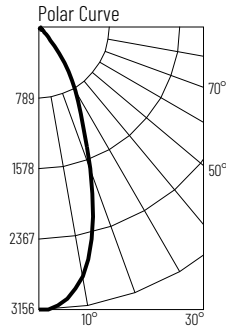
Project

Catalog No.

Notes

Test Information

Test Number: NTR1701R1
Part Number: N10-4PRTLND40XMPW/HL
Beam Spread: 41° Spot
Lumens: 1947lm
Wattage: 19.62W
Efficacy: 99pw
CCT / CRI: 4000K / 90 CRI
Spacing Criteria (0°-180°): 0.68
Spacing Criteria (90°-270°): 0.68



Illuminance at a Distance

Distance from Luminaire	FC at Nadir	Beam Diameter
8'	49.3fc	6"
10'	31.6fc	7-6"
12'	21.9fc	9-1"
14'	16.1fc	10'-7"
16'	12.3fc	12'-1"

Zonal Lumen Summary

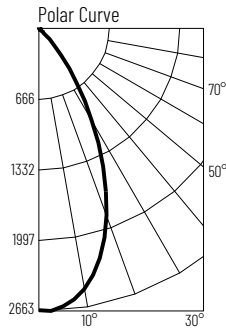
Zone	Lumens	% Luminaire
0-30	1442	74.1
0-40	1757	90.2
0-60	1902	97.7
0-90	1935	99.4
90-180	11	0.6
0-180	1947	100

Candela Table

Vertical Angles	Candela
0	3156
5	3049
15	2264
25	1151
35	496
45	117

Test Information

Test Number: NTR1704R1
Part Number: N10-4PRTLND40XMPW/HL
Beam Spread: 52° Narrow Flood
Lumens: 2083lm
Wattage: 19.55W
Efficacy: 107pw
CCT / CRI: 4000K / 90 CRI
Spacing Criteria (0°-180°): 0.84
Spacing Criteria (90°-270°): 0.82



Illuminance at a Distance

Distance from Luminaire	FC at Nadir	Beam Diameter
8'	41.6fc	7-10"
10'	26.6fc	9'-10"
12'	18.5fc	11'-10"
14'	13.6fc	13'-8"
16'	10.4fc	15'-8"

Zonal Lumen Summary

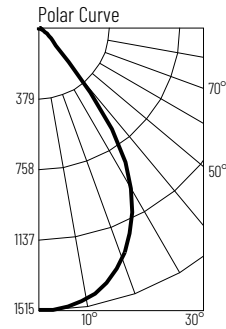
Zone	Lumens	% Luminaire
0-30	1516	72.8
0-40	1896	91
0-60	2045	98.2
0-90	2070	99.4
90-180	13	0.6
0-180	2083	100

Candela Table

Vertical Angles	Candela
0	2663
5	2613
15	2232
25	1441
35	587
45	120

Test Information

Test Number: NTR1707R1
Part Number: N10-4PRTLND40XMPW/HL
Beam Spread: 69° Flood
Lumens: 1764lm
Wattage: 19.54W
Efficacy: 90pw
CCT / CRI: 4000K / 90 CRI
Spacing Criteria (0°-180°): 1.06
Spacing Criteria (90°-270°): 1.06



Illuminance at a Distance

Distance from Luminaire	FC at Nadir	Beam Diameter
8'	23.7fc	11"
10'	15.2fc	13'-10"
12'	10.5fc	16'-6"
14'	7.7fc	19'-4"
16'	5.9fc	22"

Zonal Lumen Summary

Zone	Lumens	% Luminaire
0-30	1077	61.1
0-40	1490	84.5
0-60	1706	96.7
0-90	1753	99.4
90-180	11	0.6
0-180	1764	100

Candela Table

Vertical Angles	Candela
0	1515
5	1498
15	1398
25	1172
35	729
45	125

Lumen Output Multipliers

Color Temperature: 2700K (0.83), 3000K (0.89), 3500K (1.00), 4000K (1.00), 5000K (1.06)

PHOTOMETRICS

4" Iolite PLUS Round Trimless Downlight 2000 lumens

Type

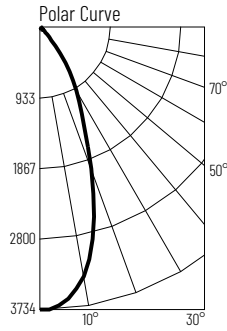
Project

Catalog No.

Notes

Test Information

Test Number: NTR1702R1
Part Number: N10-4PRTLND40XMPW/HL
Beam Spread: 41° Spot
Lumens: 2309lm
Wattage: 23.9W
Efficacy: 97pw
CCT / CRI: 4000K / 90 CRI
Spacing Criteria (0°-180°): 0.68
Spacing Criteria (90°-270°): 0.68



Illuminance at a Distance

Distance from Luminaire	FC at Nadir	Beam Diameter
12'	25.9fc	9'-1"
14'	19.1fc	10'-7"
16'	14.6fc	12'-1"
18'	11.5fc	13'-7"
20'	9.3fc	15'-1"

Zonal Lumen Summary

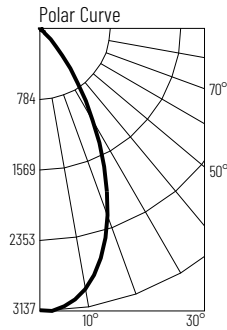
Zone	Lumens	% Luminaire
0-30	1708	74
0-40	2083	90.2
0-60	2256	97.7
0-90	2295	99.4
90-180	14	0.6
0-180	2309	100

Candela Table

Vertical Angles	Candela
0	3734
5	3608
15	2682
25	1368
35	590
45	139

Test Information

Test Number: NTR1705R1
Part Number: N10-4PRTLND40XMPW/HL
Beam Spread: 52° Narrow Flood
Lumens: 2452lm
Wattage: 23.8W
Efficacy: 103pw
CCT / CRI: 4000K / 90 CRI
Spacing Criteria (0°-180°): 0.84
Spacing Criteria (90°-270°): 0.84



Illuminance at a Distance

Distance from Luminaire	FC at Nadir	Beam Diameter
12'	21.8fc	11'-8"
14'	16fc	13'-8"
16'	12.2fc	15'-7"
18'	9.7fc	17'-7"
20'	7.8fc	19'-6"

Zonal Lumen Summary

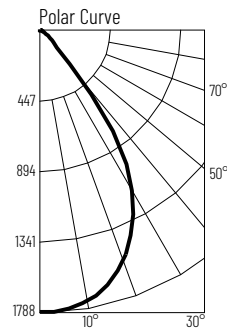
Zone	Lumens	% Luminaire
0-30	1785	72.8
0-40	2232	91
0-60	2408	98.2
0-90	2437	99.4
90-180	15	0.6
0-180	2452	100

Candela Table

Vertical Angles	Candela
0	3134
5	3078
15	2631
25	1697
35	692
45	138

Test Information

Test Number: NTR1708R1
Part Number: N10-4PRTLND40XMPW/HL
Beam Spread: 69° Flood
Lumens: 2075lm
Wattage: 23.82W
Efficacy: 87pw
CCT / CRI: 4000K / 90 CRI
Spacing Criteria (0°-180°): 1.06
Spacing Criteria (90°-270°): 1.06



Illuminance at a Distance

Distance from Luminaire	FC at Nadir	Beam Diameter
12'	12.4fc	16'-6"
14'	9.1fc	19'-2"
16'	7fc	21'-11"
18'	5.5fc	24'-8"
20'	4.5fc	27'-5"

Zonal Lumen Summary

Zone	Lumens	% Luminaire
0-30	1269	61.2
0-40	1757	84.7
0-60	2008	96.8
0-90	2063	99.4
90-180	12	0.6
0-180	2075	100

Candela Table

Vertical Angles	Candela
0	1786
5	1764
15	1646
25	1378
35	855
45	149

Lumen Output Multipliers

Color Temperature: 2700K (0.83), 3000K (0.89), 3500K (1.00), 4000K (1.00), 5000K (1.06)

PHOTOMETRICS

4" Iolite PLUS Round Trimless Downlight 2500 lumens

Type

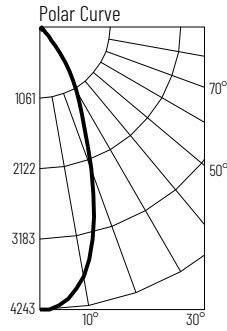
Project

Catalog No.

Notes

Test Information

Test Number: NTR1703R1
Part Number: N10-4PRTLND40XMPW/HL
Beam Spread: 41° Spot
Lumens: 2617lm
Wattage: 27.98W
Efficacy: 94pw
CCT / CRI: 4000K / 90 CRI
Spacing Criteria (0°-180°): 0.68
Spacing Criteria (90°-270°): 0.68



Illuminance at a Distance

Distance from Luminaire	FC at Nadir	Beam Diameter
16'	16.6fc	12'-1"
18'	13.1fc	13'-7"
20'	10.6fc	15'-1"
22'	8.8fc	16'-7"
24'	7.4fc	18'-1"

Zonal Lumen Summary

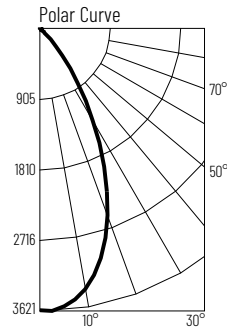
Zone	Lumens	% Luminaire
0-30	1938	74.1
0-40	2362	90.3
0-60	2557	97.7
0-90	2601	99.4
90-180	15	0.6
0-180	2617	100

Candela Table

Vertical Angles	Candela
0	4241
5	4098
15	3046
25	1550
35	667
45	155

Test Information

Test Number: NTR1706R1
Part Number: N10-4PRTLND40XMPW/HL
Beam Spread: 52° Narrow Flood
Lumens: 2834lm
Wattage: 28.18W
Efficacy: 101pw
CCT / CRI: 4000K / 90 CRI
Spacing Criteria (0°-180°): 0.84
Spacing Criteria (90°-270°): 0.84



Illuminance at a Distance

Distance from Luminaire	FC at Nadir	Beam Diameter
16'	14.1fc	15'-7"
18'	11.2fc	17'-7"
20'	9fc	19'-6"
22'	7.5fc	21'-6"
24'	6.3fc	23'-5"

Zonal Lumen Summary

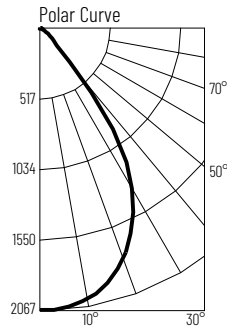
Zone	Lumens	% Luminaire
0-30	2060	72.7
0-40	2576	90.9
0-60	2781	98.1
0-90	2815	99.4
90-180	18	0.6
0-180	2834	100

Candela Table

Vertical Angles	Candela
0	3614
5	3548
15	3036
25	1961
35	797
45	167

Test Information

Test Number: NTR1709R1
Part Number: N10-4PRTLND40XMPW/HL
Beam Spread: 69° Flood
Lumens: 2401lm
Wattage: 28.23W
Efficacy: 85pw
CCT / CRI: 4000K / 90 CRI
Spacing Criteria (0°-180°): 1.06
Spacing Criteria (90°-270°): 1.06



Illuminance at a Distance

Distance from Luminaire	FC at Nadir	Beam Diameter
16'	8.1fc	21'-11"
18'	6.4fc	24'-8"
20'	5.2fc	27'-5"
22'	4.3fc	30'-1"
24'	3.6fc	32'-11"

Zonal Lumen Summary

Zone	Lumens	% Luminaire
0-30	1466	61.1
0-40	2029	84.5
0-60	2323	96.8
0-90	2387	99.4
90-180	14	0.6
0-180	2401	100

Candela Table

Vertical Angles	Candela
0	2063
5	2037
15	1900
25	1591
35	984
45	179

Lumen Output Multipliers

Color Temperature: 2700K (0.83), 3000K (0.89), 3500K (1.00), 4000K (1.00), 5000K (1.06)