

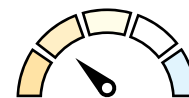
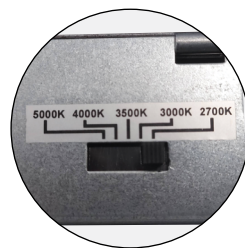
THEIA

4", 6" & 8" Canless LED Downlights 950 to 2100 lumens Selectable CCT (Five CCT options)

Theia LED luminaires are commercial grade downlights designed for easy installation into new construction or remodel applications. Tunable white luminaires include an integral color temperature switch located on the junction box of each luminaire with a quick connect that allows for easy disconnect and mounting in the ceiling.

FEATURES

- No housing required and includes pre-wired junction box
- Quick disconnect allows for easy installation
- Junction box includes selectable color temperature switch
- IC Air-Tight rated
- Deep regressed reflector minimizes aperture glare
- Ideal for multi-family and shallow plenums
- Three apertures: 4" (950lm) / 6" (1400lm) / 8" (2100lm)
- Five color temperatures in each fixture (27K / 30K / 35K / 40K / 50K)
- Two reflector finishes (Haze or Matte Powder White)
- 120V or 120-277V input
- cETLus Listed for Wet locations
- Can be used to comply with 2022 Title 24 Part 6 high efficacy requirements



Selectable CCT

Five position sliding switch
27K / 30K / 35K / 40K / 50K

Only 2-3/4"



NLTH-61TW-HZMPW

6" / 1400lm / 15W

Only 1-7/8"



NLTH-41TW-MPW

4" / 950lm / 10W

Only 3-1/4"



NLTH-81TW-MPW

8" / 2100lm / 22W



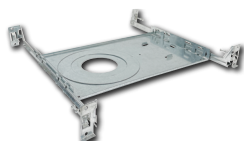
THEIA 4", 6" & 8" LED DOWNLIGHTS WITH SELECTABLE CCT

SIZE / LUMENS	FINISH	INPUT VOLTAGE / DIMMING
NLTH-41TW 4" / 950lm	HZMPW Haze / MPW	(blank) 120V; Triac/ELV dimming
NLTH-61TW 6" / 1400lm	MPW Matte Powder White	LE4 120-277V; 0-10V dimming
NLTH-81TW 8" / 2100lm		

Example: **NLTH-81TW-MPW** = 8" Theia Downlight w/ Selectable CCT, 2100lm / 22W, Matte Powder White, 120V input; Triac or ELV dimming

NEW CONSTRUCTION FRAMES

- [NF-R246](#) Universal New Construction Frame-In for 4" & 6" Theia
- [NF-R725](#) New Construction Frame-In for 8" Theia
- [NFP-R413](#) New Construction Plate for 4" Theia
- [NFP-R613](#) New Construction Plate for 6" Theia
- [NFP-R725](#) New Construction Plate for 8" Theia
- [NEPK-20LEDUNV](#) 20W Emergency LED Driver with Remote Test Switch for 4" Theia



THEIA LED DOWNLIGHTS WITH SELECTABLE CCT



4" Theia LED Tunable Downlight

NLTH-41TW 120V input
NLTH-41TW-LE4 120-277V input
 Lumens / Wattage: 950lm / 10W
 Color Temperature: 5 CCT Switch
 Finish: HZMPW or Matte Powder White
 Dimming: Triac/ELV (120V) or 0-10V (LE4)



6" Theia LED Tunable Downlight

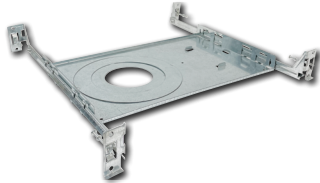
NLTH-61TW 120V input
NLTH-61TW-LE4 120-277V input
 Lumens / Wattage: 1400lm / 15W
 Color Temperature: 5 CCT Switch
 Finish: HZMPW or Matte Powder White
 Dimming: Triac/ELV (120V) or 0-10V (LE4)



8" Theia LED Tunable Downlight

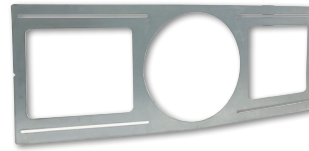
NLTH-81TW 120V input
NLTH-81TW-LE4 120-277V input
 Lumens / Wattage: 2100lm / 22W
 Color Temperature: 5 CCT Switch
 Finish: HZMPW or Matte Powder White
 Dimming: Triac/ELV (120V) or 0-10V (LE4)

New Construction Frames



New Construction Frame-Ins

NF-R246 for 4" Theia
NF-R725 for 8" Theia



New Construction Plates

NFP-R413 for 4" Theia
NFP-R613 for 6" Theia
NFP-R725 for 8" Theia

Photometrics

Part Number: NLTH-41TW-MPW
Beam Spread: 94° Wide Flood
Lumens: 985lm
Wattage: 9.27W
Efficacy: 106lpw
CCT / CRI: 4000K / 90 CRI
Spacing Criteria (0°-180°): 1.2
Spacing Criteria (90°-270°): 1.2

Illuminance at a Distance		
Distance from Luminaire	FC at Nadir	Beam Diameter
4'	28.4fc	8'-7"
6'	12.6fc	13'
8'	7.1fc	17'-4"
10'	4.6fc	21'-7"
12'	3.2fc	25'-11"

Part Number: NLTH-61TW-MPW
Beam Spread: 98° Wide Flood
Lumens: 1444lm
Wattage: 14.19W
Efficacy: 102lpw
CCT / CRI: 4000K / 90 CRI
Spacing Criteria (0°-180°): 1.2
Spacing Criteria (90°-270°): 1.22

Illuminance at a Distance		
Distance from Luminaire	FC at Nadir	Beam Diameter
6'	18.1fc	13'-10"
8'	10.2fc	18'-6"
10'	6.5fc	23'-1"
12'	4.5fc	27'-8"
14'	3.3fc	32'-4"

Part Number: NLTH-81TW-MPW
Beam Spread: 94° Wide Flood
Lumens: 2148lm
Wattage: 20.54W
Efficacy: 105lpw
CCT / CRI: 4000K / 90 CRI
Spacing Criteria (0°-180°): 1.2
Spacing Criteria (90°-270°): 1.2

Illuminance at a Distance		
Distance from Luminaire	FC at Nadir	Beam Diameter
10'	10.3fc	21'-7"
12'	7.2fc	26'
14'	5.3fc	30'-4"
16'	4fc	34'-7"
18'	3.2fc	38'-11"