



NORA<sup>®</sup>  
LIGHTING

L-LINE  
INDIRECT / DIRECT  
LINEAR LIGHTING







# L-LINE

## PENDANT, SURFACE, WALL OR RECESSED MOUNTED LED LINEAR LIGHTING DIRECT OR INDIRECT

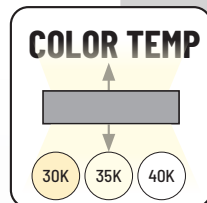
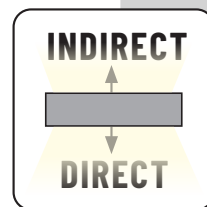
L-Line LED linear luminaires offer a clean and modern appearance with a sleek extruded aluminum housing. Symmetrical light distribution will evenly illuminate surfaces with a diffused lens, making the L-Line ideal for commercial, retail, healthcare and education applications. Internal quick connects allow systems to be connected with seamless luminous L, X or T connectors.

### FEATURES

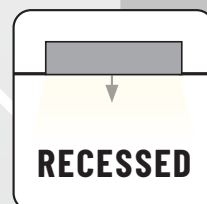
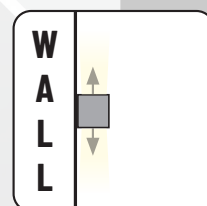
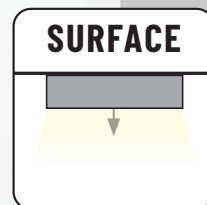
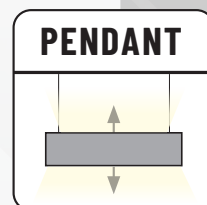
- Four different series  
NLIN (surface/pendant), NLUD (wall/pendant), NRLIN (recessed), NWLIN (wall)
- 1050 lm/ft. (NLIN/NRLIN/NWLIN) & 1643 lm/ft. (NLUD)
- Six different lengths or shapes
- Pendant, Surface, Recessed or Wall Mounted
- Aluminum, Black or White finish
- 120-277V (NLIN/NRLIN/NWLIN) & 120-347V (NLUD)
- Integral quick connects allow easy daisy chain
- 3000K, 3500K or 4000K at 80 CRI
- 5-year limited warranty
- DLC Listed
- Damp Locations Rated



### APPEARANCE



### MOUNTING





**NLUD-8334W**  
8' L-Line Linear  
with  
**NLUD-PCCW**  
Pendant Mounting Kit

**NLUD-4334W**  
4' L-Line Linear  
with  
**NLUD-4WMW**  
4' Wall Mount Kit

## NLUD SERIES - INDIRECT / DIRECT

Scan for more info.



L-CONNECTOR LED LUMINAIRE  
**NLUD-L334**

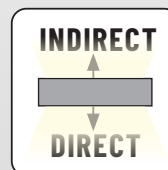
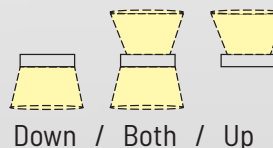


T-CONNECTOR LED LUMINAIRE  
**NLUD-T334**



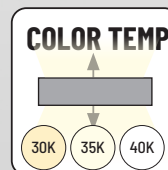
X-CONNECTOR LED LUMINAIRE  
**NLUD-X334**

**Direction of Light**



**Selectable CCT**

3 Position Sliding Switch  
Per Direction (Up & Down)  
3000K / 3500K / 4000K



**FINISH**



LINEAR LED LUMINAIRES  
**NLUD-2334** (2')  
**NLUD-4334** (4')  
**NLUD-8334** (8')

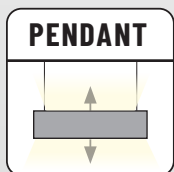




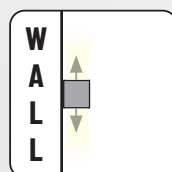


## NLUD - MOUNTING ACCESSORIES

Mounting kits are sold separately, each luminaire can be wall or pendant mounted.

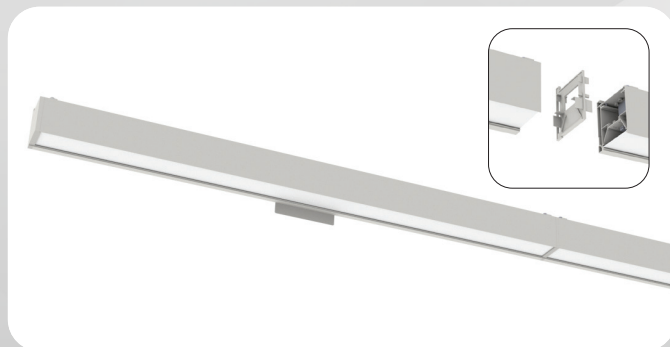
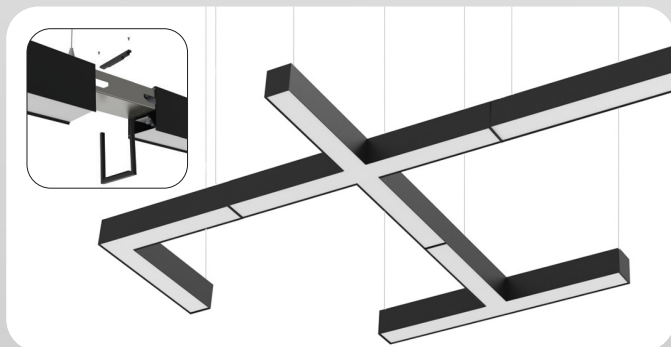


Power feed and aircraft cable kits available up to 20'



Wall mount kits available in 2' to 8' lengths.

Pendant and wall mounted luminaires can be connected together up to 420W per power feed







**NLIN-810A**  
8' L-Line Direct  
with  
**NLIN-PCCA**  
Pendant Mounting Kit

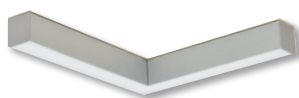
## NLIN SERIES - DIRECT



LINEAR LED LUMINAIRES  
**NLIN-210** (2')  
**NLIN-410** (4')  
**NLIN-810** (8')



T-CONNECTOR LED LUMINAIRE  
**NLIN-T10**

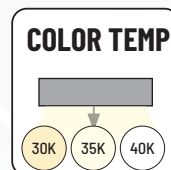
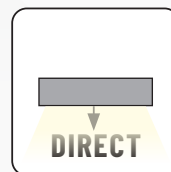


L-CONNECTOR LED LUMINAIRE  
**NLIN-L10**



X-CONNECTOR LED LUMINAIRE  
**NLIN-X10**

Scan for more info.



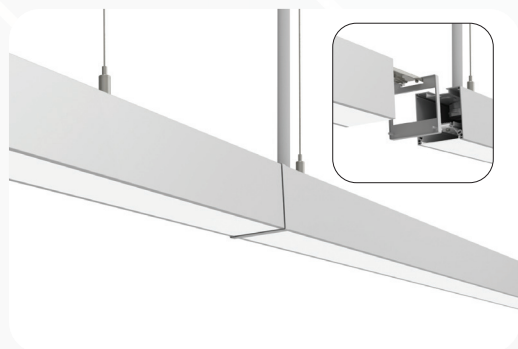
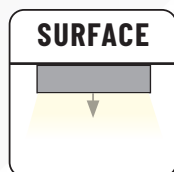
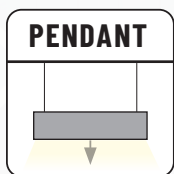




**NLIN-810A**  
8' L-Line Direct  
with  
**NLIN-JBCW**  
Junction Box Cover

## NLIN - MOUNTING ACCESSORIES

Mounting kits are sold separately, each luminaire can be surface or pendant mounted.



Power feed and aircraft cable kits available up to 20'

Luminaires can be connected up to 80'



## NRLIN SERIES - DIRECT



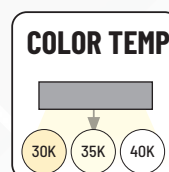
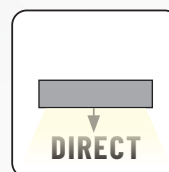
2' LED LUMINARE  
NRLIN-210



4' LED LUMINARE  
NRLIN-410



8' LED LUMINARE  
NRLIN-810

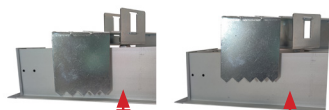
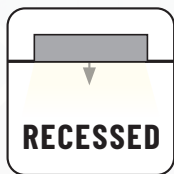






## NRLIN - MOUNTING BRACKETS

Each luminaire includes ceiling brackets.

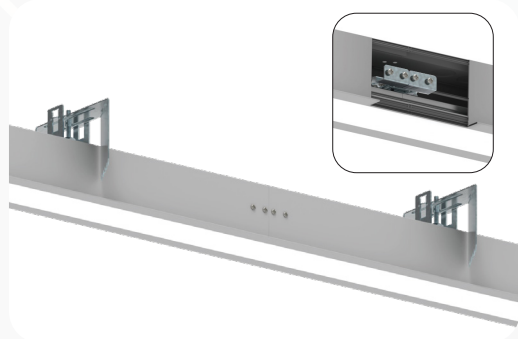


Minimum  
Thickness: 0.25"

Maximum  
Thickness: 1"



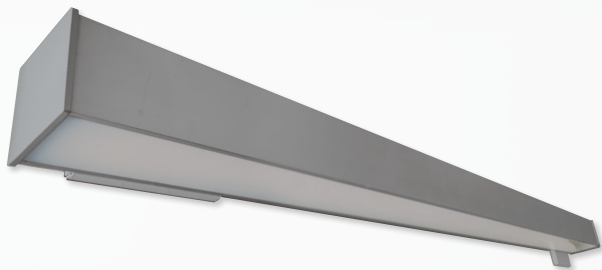
Luminaires include ceiling brackets for recessed installations



Bracket accessories keep luminaires  
connected seamlessly up to 80'



## NWLIN SERIES - DIRECT



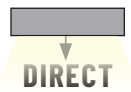
2' LED LUMINAIRE  
NWLIN-210



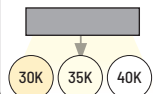
4' LED LUMINAIRE  
NWLIN-410



8' LED LUMINAIRE  
NWLIN-810



### COLOR TEMP



### FINISH

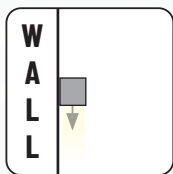






## NWLIN - WALL PLATES

Each luminaire can be specified with different wall plates



Wall mounted luminaires include the option of a left or right powered plate. Providing a wider range of mounting options and versatility.

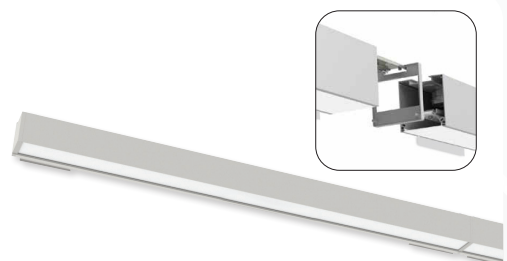


4" x 4" WALL PLATE



2" x 4" WALL PLATE

Wall mount plates can be specified in two different sizes



Luminaires can be connected up to 80'



**NORA LIGHTING, INC.**  
6505 Gayhart St.  
Commerce, CA 90040  
TEL 323.767.2600  
FAX 323.722.3677  
[www.NoraLighting.com](http://www.NoraLighting.com)

**DOMESTIC FACILITIES:**  
Atlanta, GA  
Cincinnati, OH  
Dallas, TX  
Denver, CO  
Detroit, MI  
Edison, NJ  
Los Angeles, CA  
Louisville, KY  
Nashville, TN  
New York, NY

**INTERNATIONAL SALES:**  
6505 Gayhart St.  
Commerce, CA 90040  
TEL 323.767.2600  
FAX 323.722.3677

The products shown in this catalog are covered by USA and International patents. Specifications subject to change without notice.

© Copyright 2022 Nora Lighting, Inc. All rights reserved