



**NORA**<sup>®</sup>  
LIGHTING

**CAN-LESS RECESSED**

1" TO 8" APERTURES

100 TO 3300 LUMENS



At Nora Lighting, we're committed to bringing innovation and efficiency to every space. Our new Can-less Lighting Catalog showcases the cutting-edge solutions that eliminate the need for traditional recessed cans, offering sleek, energy-efficient alternatives without compromising on performance or design. From seamless integration into ceilings to versatile applications, our can-less products are crafted to elevate your lighting experience. Whether you're designing residential or commercial spaces, we're excited to provide the ideal solutions to meet your needs while enhancing sustainability and style.

We understand that every project is unique, which is why we offer a wide range of can-less lighting styles and options to fit various design aesthetics and budgets. From more luxury designs to budget-conscious solutions, our products provide the flexibility and value you need to create the perfect lighting scheme for any space. At Nora Lighting, we're dedicated to delivering quality, performance, and value in every fixture.

Explore our latest collection and discover the freedom of can-less lighting, where innovation meets simplicity.

## Table of Contents

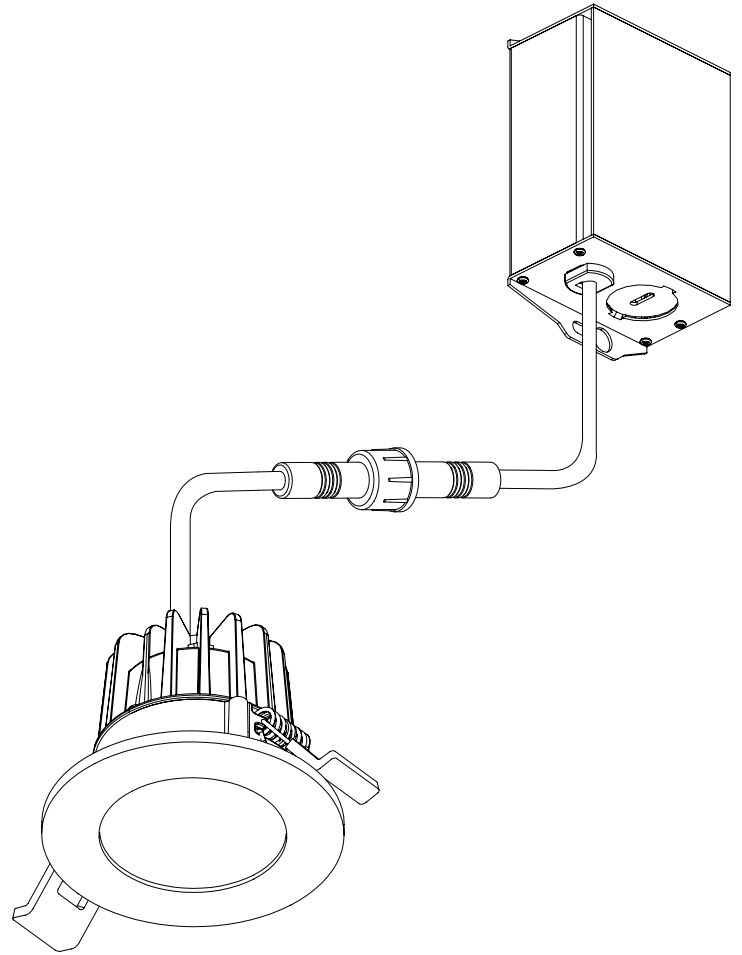
M1 Series (1" 12V) .....	P. 5
M1 Series (1" 120V) .....	P. 9
M2 Series (2").....	P. 13
M4 Series (4").....	P. 19
Iolite Series (1", 2" & 4") .....	P. 23
M-Wave Series (2" & 4" Adjustable) .....	P. 27
M-Curve Series (4" & 6" Adjustable).....	P. 31
FLAT Series (4" & 6" Thin Wafer) .....	P. 35
FLIN Series (4" & 6" Regressed Wafer) .....	P. 39
FLIN Adjustable Series (4" & 6" Wafer).....	P. 43
Theia Series (4", 6" & 8").....	P. 47
Quartz Series (4", 6" & 8").....	P. 51
Comparison Chart .....	P. 54





# CAN-LESS

NO HOUSING REQUIRED



Standard recessed downlights require a housing.  
Can-less downlights include a pre-wired junction box.  
No housing is required!





Scan for info.



**M1**  
1" 12V



### TRIMS

#### Aperture Size

1"

#### Shape

Round or Square

#### Type

Round Stainless Steel,  
Square Stainless Steel, Scoop, Louver,  
Hexcell, Stainless Steel Indicator

#### Finish



Black



Brushed Nickel



White

### LIGHT OUTPUT

#### Lumens / Wattage

100lm / 2W

#### Color Temperature

Dedicated CCT



#### Color Rendering Index

90+ CRI

#### Optic

Field Changeable  
(Four optics included)

### ELECTRICAL

#### Input Voltage

12VDC

#### Dimming

Driver Ordered Separately

#### Listings & Warranty



IC Rated



cETLus Listed



Wet Location



FCC Compliant

# M1

1" 12V

## LUMINAIRE



### NM1-170

12V LED Module with  
(4) Round & Square Trims

CCT

<b>NM1-17027X2PBW</b>	2700K
<b>NM1-17030X2PBW</b>	3000K

Example: **NM1-17030X2PBW** = 1" M1 3000K LED Module & (4) Trims

## TRIM ACCESSORIES



### NM1-RAEYELID

Round Scoop Trim



### NM1-RAIHEC

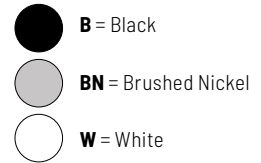
Round Hexcell Trim



### NM1-RLOUV

Round Louver Trim

### FINISH:



### NM1-RSSD

Round Stainless Steel Indicator Trim



### NM1-RSS

Round Stainless Steel Trim



### NM1-SSS

Square Stainless Steel Trim

Trim Accessory		Finish	
<b>NM1-RAEYELID</b>	Round Scoop Trim	<b>B</b>	Black
<b>NM1-RAIHEC</b>	Round Hexcell Trim	<b>BN</b>	Brushed Nickel
<b>NM1-RLOUV</b>	Round Louver Trim	<b>W</b>	White
<b>NM1-RSSD</b>	Round Stainless Steel Indicator Trim		
<b>NM1-RSS</b>	Round Stainless Steel Trim		
<b>NM1-SSS</b>	Square Stainless Steel Trim		

Example: **NM1-RSSW** = 1" Round Stainless Steel Trim, White Finish



**12VDC DRIVERS**



**NM1-DVR12**  
12W Non-Dimmable Driver



**NAPKED-5040HW**  
40W Dimmable Driver



**NAPKED-5060HW**  
60W Dimmable Driver



**NPSU-60W/12**  
60W Universal Dimming Driver



**NM1-HWPC/24**  
24" Power Feed for Drivers

12VDC Drivers

<b>NM1-DVR12</b>	12W Non-Dimmable Driver
<b>NAPKED-5040HW</b>	40W Dimmable Driver
<b>NAPKED-5060HW</b>	60W Dimmable Driver
<b>NPSU-60W/12</b>	60W Universal Dimming Driver
<b>NM1-HWPC/24</b>	24" Power Feed for Drivers

**MOUNTING ACCESSORIES**



**NM1-F**  
Frame-In Plate



**NM1-EXT**  
Extension Cables



**NM1-TM6**  
Splitter Cable (1 in- 6 out)



**NM1-WH6**  
Wire Harness System

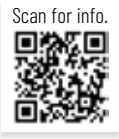
Mounting Accessories

<b>NM1-F</b>	Frame-In Plate
<b>NM1-EXT6</b>	6" Extension Cable
<b>NM1-EXT12</b>	12" Extension Cable
<b>NM1-EXT18</b>	18" Extension Cable
<b>NM1-EXT48</b>	48" Extension Cable
<b>NM1-EXT240</b>	240" Extension Cable

Mounting Accessories

<b>NM1-TM6</b>	Splitter Cable (1 input - 6 output)
<b>NM1-WH6</b>	Wire Harness System (1 input - 6 output)





**M1+**  
1" 120V



### TRIMS

#### Aperture Size

1"




#### Shape

Round or Square

#### Type

Downlight

#### Finish

-  Matte Black
-  Bronze
-  Matte Power White

### LIGHT OUTPUT

#### Lumens / Wattage

600lm / 9W

#### Color Temperature

Dedicated CCT



#### Color Rendering Index

90+ CRI

#### Optic

Fixed

### ELECTRICAL







#### Input Voltage

120VAC

#### Dimming

Triac or ELV

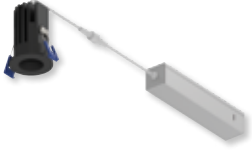
#### Listings & Warranty

-  IC Rated
-  Air Tight
-  cETLus Listed
-  Wet Location
-  FCC Compliant
-  Title 24 Compliant

# M1+

1" 120V




## LUMINAIRE



**NM1-PRDC**

Round Downlight

**FINISH:**

-  **BB** = Matte Black
-  **BZ** = Bronze
-  **MPW** = Matte Powder White

CCT	Finish
<b>NM1-PRDCL127</b>	2700K <b>BB</b> Matte Black
<b>NM1-PRDCL130</b>	3000K <b>BZ</b> Bronze
	<b>MPW</b> Matte Power White

Example: **NM1-PRDCL130MPW** = 1" M1+ Round Downlight, 3000K, Matte Powder White finish

## TRIM ACCESSORIES



**NM1-PSDT**

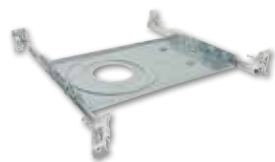
Square Trim

Trim Accessory	Finish
<b>NM1-PSDT</b> Square Trim	<b>BB</b> Matte Black
	<b>BZ</b> Bronze
	<b>MPW</b> Matte Power White

Example: **NM1-PSDTBZ** = 1" Square Trim, Bronze Finish

**MOUNTING ACCESSORIES**

---



**NF-R2**

Frame-In



**NMA-EW**

Extension Cables

Mounting Accessory

---

- NF-R2**      New Construction Frame-In
- NMA-EW-4**      4' Extension Cable
- NMA-EW-10**      10' Extension Cable





Scan for info.



# M2

2" & Multiples



## TRIMS

### Aperture Size

2"

### Shape

Round, Square, Multiples

### Type

Downlight, Trimless, Gimbal, Elbow

### Finish



Matte Black



Matte Power White

## LIGHT OUTPUT

### Lumens / Wattage

400lm / 6W, 600lm / 8W,  
850lm / 10W, 900lm / 10W

### Color Temperature

2700K 2700K

3000K 3000K

4000K 4000K(2RDC, 2RDCS, 2RG, 2RTLDC)

### Color Rendering Index

90+ CRI

### Optic

Fixed  
(Elbow includes two optics)

## ELECTRICAL

### Input Voltage

120VAC

### Dimming

Phase (Triac or ELV)

### Listings & Warranty



IC Rated



Air Tight



cETLs Listed



Wet Location (Adjustable is Damp)



RoHS Compliant



Title 24 Compliant





Scan for info.



# M2 2" Trimless



## TRIMS

### Aperture Size

2"

### Shape

Round

### Type

Downlight

### Finish



Matte Black



Matte Power White

## LIGHT OUTPUT

### Lumens / Wattage

750lm / 8W  
900lm / 10W

### Color Temperature

Dedicated CCT



### Color Rendering Index

90+ CRI

### Optic

Fixed

## ELECTRICAL

### Input Voltage

120VAC

### Dimming

Triac or ELV

### Listings & Warranty



IC Rated



Air Tight



cULus Listed



Damp Location



FCC Compliant

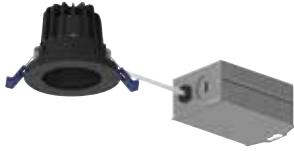


Title 24 Compliant

# M2

## 2", Multiples & Trimless

### 2" ROUND LUMINAIRES



**NM2-2RDC**

2" Downlight



**NM2-2RTLDC**

2" Trimless Downlight



**NM2-2RG**

2" Adjustable Gimbal



**NM2-2R270**

2" Adjustable Elbow

Trim Type		Lumens / Wattage	CCT	Finish
<b>NM2-2RDC</b>	Open Downlight	<b>40</b> 400lm / 6W	<b>27</b> 2700K	<b>BB</b> Matte Black
<b>NM2-2RDCS</b>	Lensed Downlight	<b>60</b> 600lm / 8W	<b>30</b> 3000K	<b>MPW</b> Matte Power White
<b>NM2-2RTLDC</b>	Trimless Downlight	<b>85</b> 850lm / 10W	<b>40</b> 4000K	
<b>NM2-2RG</b>	Adjustable Gimbal	<b>40</b> 400lm / 6W	<b>27</b> 2700K	<b>BB</b> Matte Black
		<b>60</b> 600lm / 8W	<b>30</b> 3000K	<b>MPW</b> Matte Power White
			<b>40</b> 4000K	
<b>NM2-2R270</b>	Adjustable Elbow	<b>50</b> 500lm / 12W	<b>27</b> 2700K	<b>BB</b> Matte Black
			<b>30</b> 3000K	<b>MPW</b> Matte Power White

**FINISH:**



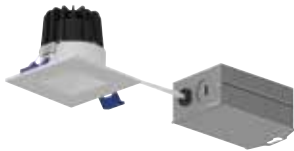
**BB** = Matte Black



**MPW** = Matte Powder White

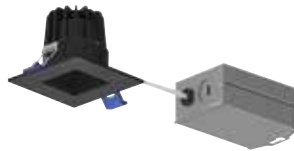
Example: **NM2-2RDC8530BB** = 2" M2 Round Downlight, 850lm, 3000K, Matte Black Finish

### 2" SQUARE LUMINAIRES



**NM2-2SB**

2" Square Baffle



**NM2-2SDC**

2" Square Downlight

Trim Type		Lumens / Wattage	CCT	Finish
<b>NM2-2SB</b>	Square Baffle	<b>60</b> 600lm / 8W	<b>27</b> 2700K	<b>BB</b> Matte Black
<b>NM2-2SDC</b>	Square Downlight	<b>85</b> 850lm / 10W	<b>30</b> 3000K	<b>MPW</b> Matte Power White

Example: **NM2-2SDC8530BB** = 2" M2 Square Downlight, 850lm, 3000K, Matte Black Finish

### MULTIPLES LIGHTING SYSTEM PLATES



**NM2-MLS1**

One-Head Plate



**NM2-MLS2**

Two-Head Plate



**NM2-MLS3**

Three-Head Plate

Number of Head(s)	Finish
<b>NM2-MLS1</b> One Head	<b>BB</b> Matte Black
<b>NM2-MLS2</b> Two Heads	<b>MPW</b> Matte Power White
<b>NM2-MLS3</b> Three Heads	

Example: **NM2-MLS2BB** = M2 Two-Head Multiple Plate, Black Finish



**TRIM ACCESSORIES**



● ○  
**NM2-2SDT**

Square Trim for NM2-2RDC



● ○  
**NM2-2SGT**

Square Trim for NM2-2RG



● ○  
**NM2-2SET**

Square Trim for NM2-2R270



● ○  
**NM2-2RPH**

Pinhole Trim for NM2-2RDC



● ○  
**NM2-2RW**

Wall Wash Trim for NM2-2RDC



● ●  
**NM2-2REFL**

Reflector Insert for NM2-2RDC



● ○  
**NM2-2BAF**

Baffle Insert for NM2-2RDC

Square Trim Accessory	Finish
<b>NM2-2SDT</b> for NM2-2RDC	<b>B</b> Matte Black
<b>NM2-2SGT</b> for NM2-2RG	<b>MPW</b> Matte Power White
<b>NM2-2SET</b> for NM2-2R270	

Example: **NM2-2SDTB** = Square Trim for NM2-2RDC, Matte Black Finish

Trim Accessory for NM2-RDC	Finish
<b>NM2-2RPH</b> Pinhole Trim	<b>B</b> Matte Black
<b>NM2-2RW</b> Wall Wash Trim	<b>MPW</b> Matte Power White
<b>NM2-2BAF</b> Baffle Insert	
<b>NM2-2REFL</b> Reflector Insert	<b>B</b> Matte Black <b>HZ</b> Haze

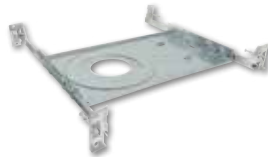
Example: **NM2-2RPHB** = Pinhole Trim, Black Finish

**MOUNTING ACCESSORIES**



**NM2-TLMR-R**

Trimless Mud Plate



**NF-R246**

Universal Frame-In



**NFC-R275**

Frame-In with Collar



**NM2-EW**

Extension Cables

Mounting Accessory	
<b>NM2-TLMR-R</b>	Trimless Mud Plate for NM2-2RTLDC
<b>NF-R246</b>	Universal Frame-In
<b>NFC-R275</b>	Frame-In with Collar
<b>NM2-EW-4</b>	4' Extension Cable
<b>NM2-EW-10</b>	10' Extension Cable



Scan for info.



**M4**  
4"



### TRIMS

#### Aperture Size

4"

#### Shape

Round or Square

#### Type

Downlight, Elbow, Gimbal

#### Finish



Matte Black



Matte Power White

### LIGHT OUTPUT

#### Lumens / Wattage

950lm / 12W (NM4-RG & NM4-R470)  
1150lm / 15W (NM4-RDC)

#### Color Temperature

Dedicated CCT



#### Color Rendering Index

90+ CRI

#### Optic

Fixed  
(Elbow includes two optics)

### ELECTRICAL

#### Input Voltage

120VAC

#### Dimming

Triac or ELV

#### Listings & Warranty



IC Rated



Air Tight



cULus Listed



Wet Location (Elbow is Damp)



FCC Compliant

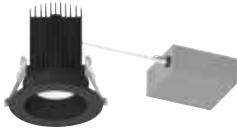


Title 24 Compliant

# M4

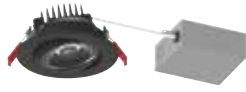
4"

## LUMINAIRES



**NM4-RDC**

4" Downlight



**NM4-RG**

4" Adjustable Gimbal



**NM4-R470**

4" Adjustable Elbow

Trim Type		CCT		Finish	
<b>NM4-RDC</b>	Open Downlight	<b>27</b>	2700K	<b>BB</b>	Matte Black
<b>NM4-RG</b>	Adjustable Gimbal	<b>30</b>	3000K	<b>MPW</b>	Matte Power White
<b>NM4-R470</b>	Adjustable Elbow				

Example: **NM4-RDC30BB** = 4" M4 Round Downlight, 3000K, Matte Black Finish

### FINISH:



**BB** = Matte Black



**MPW** = Matte Powder White

## TRIM ACCESSORIES



**NM4-SDT**

Square Baffle Trim for NM4-RDC



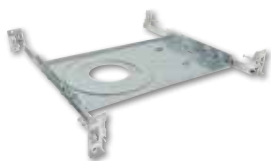
**NM4-SET**

Square Trim for NM4-R470

Square Trim Accessory		Finish	
<b>NM4-SDT</b>	for NM4-RDC	<b>B</b>	Matte Black
<b>NM4-SET</b>	for NM4-R470	<b>MPW</b>	Matte Power White

Example: **NM4-SDTB** = Square Trim for NM4-RDC, Matte Black Finish

## MOUNTING ACCESSORIES



**NF-R246** for NM4-RG & NM4-R470

Universal Frame-In



**NFC-R430** for NM4-RG & NM4-R470

**NFC-R375** for NM4-RDC

Frame-In with Collar



**NM2-EW**

Extension Cables

### Mounting Accessory

<b>NF-R246</b>	Universal Frame-In for NM4-RG & NM4-R470
<b>NFC-R430</b>	Frame-In with Collar for NM4-RG & NM4-R470
<b>NFC-R375</b>	Frame-In with Collar for NM4-RDC
<b>NM2-EW-4</b>	4' Extension Cable
<b>NM2-EW-10</b>	10' Extension Cable





Scan for info.



# IOLITE

1", 2" & 4"



## TRIMS

### Aperture Size

1", 2" & 4"

### Shape

Round or Square

### Type

Downlight, Adjustable, Sloped

### Finish



Black



Haze / White



Haze / Matte Power White



Matte Power White



White

## LIGHT OUTPUT

### Lumens / Wattage

1" / 900lm / 9W  
2" / 1250lm / 12W  
4" / 1250lm / 12W

### Color Temperature

Dedicated CCT



### Color Rendering Index

90+ CRI

### Optic

Field Changeable  
(Spot, Narrow Flood and Flood included)

## ELECTRICAL

### Input Voltage

120VAC

### Dimming

Triac or ELV

### Listings & Warranty



IC Rated



Air Tight



cETLus Listed



Wet Location



FCC Compliant



Title 24 Compliant

# IOLITE

1", 2" & 4"

## 1" TRIMS



**NIOC-1RNB**

1" Round Bullnose



**NIOC-1RNG**

1" Round Downlight



**NIOC-1SNG**

1" Square Downlight

### FINISH:



**B** = Black



**HZW** = Haze / White



**HZMPW** = Haze / Matte Powder White



**MPW** = Matte Powder White



**W** = White

Trim Type	Finish
<b>NIOC-1RNG</b> 1" Round Downlight	<b>HW</b> Haze / White
<b>NIOC-1SNG</b> 1" Square Downlight	<b>MPW</b> Matte Powder White
<b>NIOC-1RNB</b> 1" Round Bullnose	<b>WW</b> White

Example: **NIOC-1RNGHW** = 1" Round Downlight, Haze Reflector / White Finish

## 2" TRIMS



**NIOC-2RPH**

2" Pinhole



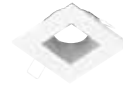
**NIOC-2RNB**

1" Round Bullnose



**NIOC-2RND**

2" Round Downlight



**NIOC-2SNDSQ**

2" Square Downlight

Trim Type	Finish
<b>NIOC-2RND</b> 2" Round Downlight	<b>HW</b> Haze / White
<b>NIOC-2SNDSQ</b> 2" Square Downlight	<b>HZMPW</b> Haze / Matte Powder White
<b>NIOC-2RPH</b> 2" Round Pinhole	<b>MPW</b> Matte Powder White
<b>NIOC-2RNB</b> 2" Round Bullnose	<b>WW</b> White

Example: **NIOC-2RNDCHW** = 2" Round Downlight, Haze Reflector / White Finish

## 4" TRIMS



**NIOC-4RPH**

4" Pinhole



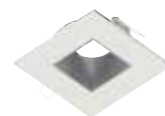
**NIOC-4RNB**

4" Round Bullnose



**NIOC-4RND**

4" Round Downlight



**NIOC-4SNDSQ**

4" Square Downlight



**NIOC-4RSP**

4" Round Sloped Downlight



**NIOC-4RSLA**

4" Round Slot Adjustable

Trim Type	Finish
<b>NIOC-4RND</b> 4" Round Downlight	<b>B</b> Black (NIOC-4RSP only)
<b>NIOC-4SNDSQ</b> 4" Square Downlight	<b>HW</b> Haze / White
<b>NIOC-4RPH</b> 4" Round Pinhole	<b>HZMPW</b> Haze / Matte Powder White
<b>NIOC-4RNB</b> 4" Round Bullnose	<b>MPW</b> Matte Powder White
<b>NIOC-4RSLA</b> 4" Round Slot Adjustable	<b>WW</b> White
<b>NIOC-4RSP</b> 4" Round Sloped Ceiling	

Example: **NIOC-4RNDCHW** = 4" Round Downlight, Haze Reflector / White Finish

## REMOTE DRIVERS



**NJCB-09**

1" Remote Driver



**NJCB-12**

2" & 4" Remote Driver

### Driver Box (REQUIRED)

<b>NJCB-09</b>	9W Driver for NIOC-1LED
<b>NJCB-12</b>	12W Driver for NIOC-24LED

## LED MODULE



**NIOC-1LED**

1" 900lm LED Module



**NIOC-24LED**

2" & 4" 1250lm LED Module

### LED Module (REQUIRED)

<b>NIOC-1LED</b>	900lm module for 1"
<b>NIOC-24LED</b>	1250lm module for 2" & 4"

## TRIM ACCESSORIES



<b>NIO-1AS14</b>	5/8" length
<b>NIO-1AS19</b>	3/4" length
<b>NIO-1AS26</b>	1" length

Collar / Snoot  
Accessory for 1" Trims



<b>NIO-AS14</b>	5/8" length
<b>NIO-AS19</b>	3/4" length
<b>NIO-AS26</b>	1" length

Collar / Snoot Accessory for 2" &  
4" Trims



<b>NIO-1HC</b>	for 1" Trims
<b>NIO-HC</b>	for 2" & 4" Trims

Hex Cell Louver

1" Accessories	Finish
<b>NIO-1AS14</b> 5/8" length	<b>AM</b> Amber
<b>NIO-1AS19</b> 3/4" length	<b>BLU</b> Blue
<b>NIO-1AS26</b> 1" length	<b>FR</b> Frosted
	<b>MPW</b> Matte Powder White
	<b>R</b> Red

**NIO-1HC** Hex Louver

Example: **NIO-1AS14BLU** = 5/8" Snoot, Blue Finish

2" & 4" Accessories	Finish
<b>NIO-AS14</b> 5/8" length	<b>AM</b> Amber
<b>NIO-AS19</b> 3/4" length	<b>BLU</b> Blue
<b>NIO-AS26</b> 1" length	<b>FR</b> Frosted
	<b>MPW</b> Matte Powder White
	<b>R</b> Red

**NIO-HC** Hex Louver

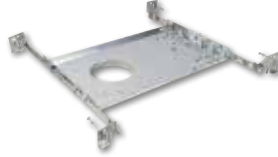
Example: **NIO-AS26R** = 1" Snoot, Red Finish

## MOUNTING ACCESSORIES



**NF-R124**

Universal Frame-In



<b>NFC-R231</b>	for 1" Trims
<b>NFC-R313</b>	for 2" Trims
<b>NFC-R413</b>	for 4" Trims

Frame-In with Collar



**NCA-EW**

Extension Cable

### Mounting Accessory

<b>NF-R124</b>	Universal Frame-In
<b>NFC-R231</b>	Frame-In with Collar for 1" Trims
<b>NFC-R313</b>	Frame-In with Collar for 2" Trims
<b>NFC-R413</b>	Frame-In with Collar for 4" Trims
<b>NCA-EW-4</b>	4' Extension Cable
<b>NCA-EW-10</b>	10' Extension Cable





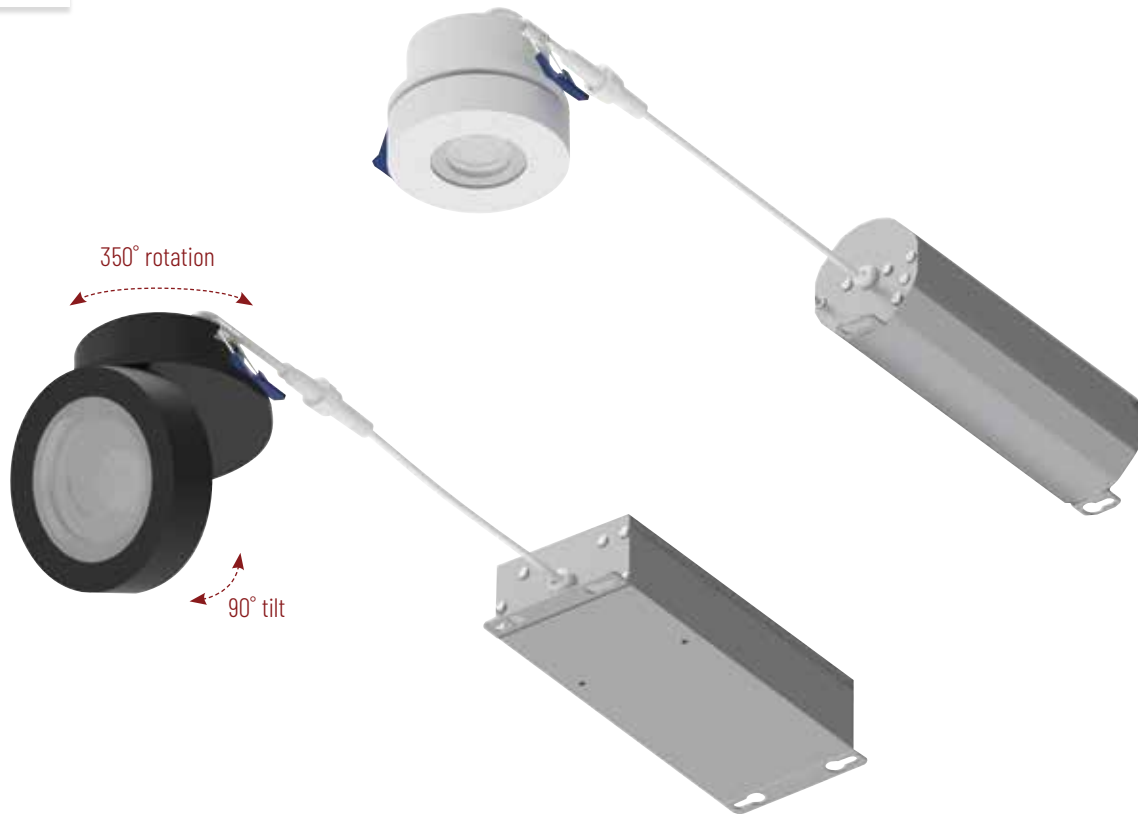


Scan for info.



# M-WAVE

2" & 4"



## TRIMS

### Aperture Size

2" & 4"

### Shape

Round

### Type

Adjustable Downlight  
90° Tilt & 350° Rotation

### Finish



Matte Black



Matte Power White

## LIGHT OUTPUT

### Lumens / Wattage

2" / 750lm / 9W  
4" / 1250lm / 14W

### Color Temperature

Dedicated CCT



### Color Rendering Index

90+ CRI

### Optic

Field Changeable  
(Narrow Flood & Spot included)

## ELECTRICAL

### Input Voltage

120VAC

### Dimming

Triac or ELV

### Listings & Warranty



IC Rated



Air Tight



cULus Listed



Wet Location



FCC Compliant



Title 24 Compliant

# M-WAVE

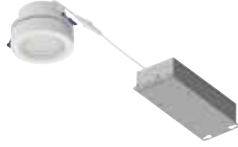
2" & 4"

## LUMINAIRES



**NMW-2**

2" M-Wave



**NMW-4**

4" M-Wave

### FINISH:



**B** = Matte Black



**MPW** = Matte Powder White

Size	CCT	Finish
<b>NMW-2</b> 2" M-Wave	<b>27</b> 2700K	<b>B</b> Matte Black
<b>NMW-4</b> 4" M-Wave	<b>30</b> 3000K	<b>MPW</b> Matte Powder White

Example: **NMW-430B** = 4" M-Wave, 3000K, Matte Black Finish

## REPLACEMENT OPTICS



**NMWA-20PT**

Optics for 2" M-Wave



**NMWA-40PT**

Optics for 4" M-Wave

Optic	Beam Spread
<b>NMWA-20PT</b> for 2" M-Wave	<b>SP</b> Narrow Spot
<b>NMWA-40PT</b> for 4" M-Wave	<b>NFL</b> Spot

Example: **NMWA-20PTSP** = Spot Optic for 2" M-Wave

**MOUNTING ACCESSORIES**

---



**NF-R124**  
Frame-In for 4" M-Wave



**NCA-EW**  
Extension Cable

---

Mounting Accessory

- |                  |                        |
|------------------|------------------------|
| <b>NF-R124</b>   | Frame-In for 4" M-Wave |
| <b>NCA-EW-4</b>  | 4' Extension Cable     |
| <b>NCA-EW-10</b> | 10' Extension Cable    |

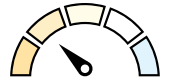


Scan for info.

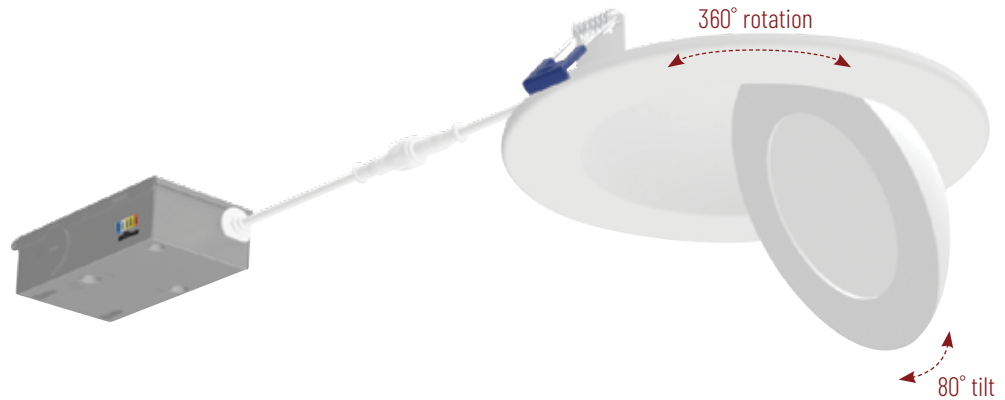


# M-CURVE

4" & 6"



Selectable CCT



## TRIMS

### Aperture Size

4" & 6"

### Shape

Round

### Type

Adjustable Downlight  
80° Tilt & 360° Rotation

### Finish



Matte Powder White

## LIGHT OUTPUT

### Lumens / Wattage

4" / 900lm / 9W  
6" / 1300lm / 13W

### Color Temperature

Selectable CCT



### Color Rendering Index

90+ CRI

### Optic

Fixed - 48° Narrow Flood

## ELECTRICAL

### Input Voltage

120VAC

### Dimming

Triac or ELV

### Listings & Warranty



IC Rated



Air Tight



cETLus Listed



Wet Location



FCC Compliant

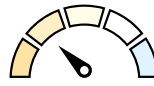
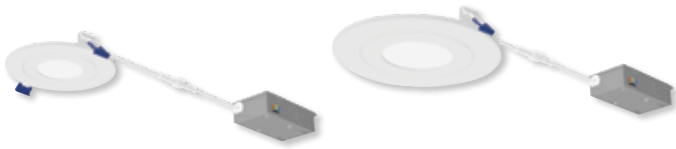


Title 24 Compliant

# M-CURVE

4" & 6"

## LUMINAIRES



Selectable CCT



**NMC-4RTW**

4" M-Curve



**NMC-6RTW**

6" M-Curve

**FINISH:**



**MPW** = Matte Powder White

Size	CCT	Finish
<b>NMC-4R</b> 4" M-Curve	<b>TW</b> Selectable CCT (27K/30K/35K/40K/50K)	<b>MPW</b> Matte Power White
<b>NMC-6R</b> 6" M-Curve		

Example: **NMC-6RTWMPW** = 6" M-Curve, Selectable CCT, Matte Powder White Finish



## MOUNTING ACCESSORIES

---



**NFC-R375** for 2" M-Curve

**NFC-R5** for 4" M-Curve

---

Frame-In with Collar

---

### Mounting Accessory

**NFC-R375** Frame-In with Collar for 2" M-Curve

**NFC-R5** Frame-In with Collar for 4" M-Curve

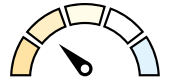


Scan for info.

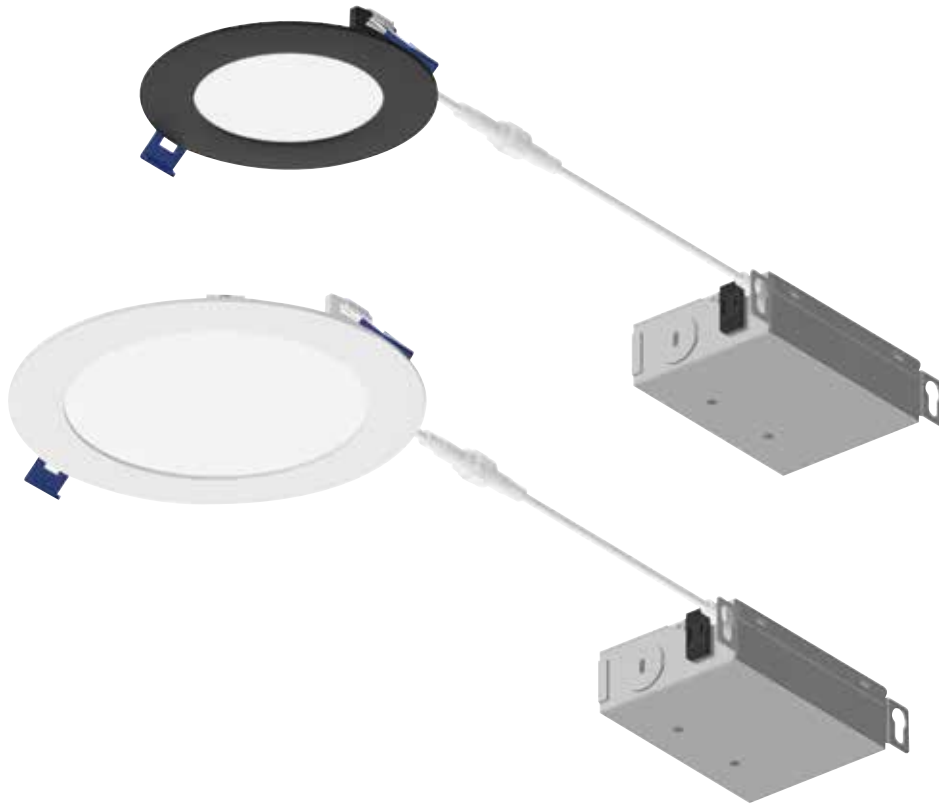


# FLAT

4" & 6"



Selectable CCT



## TRIMS

### Aperture Size

4" & 6"

### Shape

Round

### Type

Dead Front Wafer Downlight

### Finish



Matte Black



Matte Power White

## LIGHT OUTPUT

### Lumens / Wattage

4" / 700lm / 10W  
6" / 1050lm / 13.5W

### Color Temperature

Selectable CCT



### Color Rendering Index

90+ CRI

### Optic

Fixed - 113° Wide Flood

## ELECTRICAL

### Input Voltage

120VAC

### Dimming

Triac or ELV

### Listings & Warranty



IC Rated



Air Tight



cETLus Listed



Wet Location



FCC Compliant



Title 24 Compliant

# FLAT

4" & 6"

## LUMINAIRES



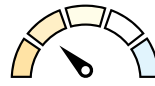
**NFLAT-R4**

4" FLAT




**NFLAT-R6**

6" FLAT



Selectable CCT

### FINISH:

 **BB** = Matte Black

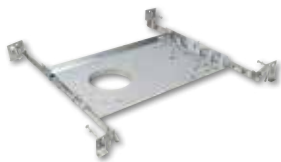
 **MPW** = Matte Powder White

Size	CCT	Finish
<b>NFLAT-R4</b>	4" FLAT <b>TW</b> Selectable CCT (27K/30K/35K/40K/50K)	<b>B</b> Black
<b>NFLAT-R6</b>	6" FLAT	<b>MPW</b> Matte Power White

Example: **NFLAT-R6TWMPW** = 6" FLAT, Selectable CCT, Matte Powder White Finish

**MOUNTING ACCESSORIES**

---



**NFC-R375** for 2" M-Curve  
**NFC-R5** for 4" M-Curve

---

Frame-In with Collar

Mounting Accessory

---

**NFC-R375** Frame-In with Collar for 2" M-Curve  
**NFC-R5** Frame-In with Collar for 4" M-Curve



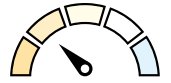




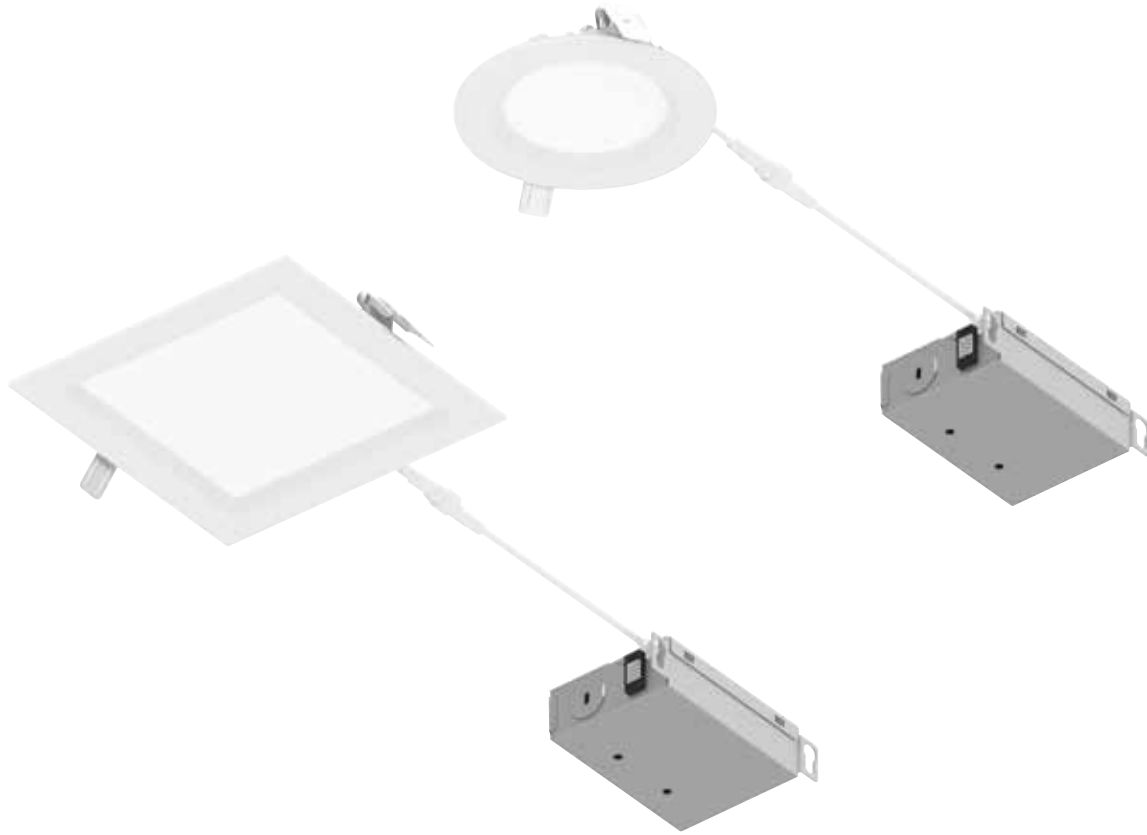


**FLIN**

4" & 6"



Selectable CCT



**TRIMS**

**Aperture Size**

4" & 6"

**Shape**

Round or Square

**Type**

Wafer Downlight with Regressed Baffle

**Finish**



Matte Powder White

**LIGHT OUTPUT**

**Lumens / Wattage**

4" / 950lm / 10.5W (round)  
4" / 650lm / 10.5W (square)  
6" / 1300lm / 13.5W (round)  
6" / 1150lm / 13.5W (square)

**Color Temperature**

Selectable CCT



**Color Rendering Index**

90+ CRI

**Optic**

Fixed - 115° Wide Flood

**ELECTRICAL**

**Input Voltage**

120VAC or 120-277VAC

**Dimming**

Triac or ELV

**Listings & Warranty**



IC Rated



Air Tight



cETLus Listed



Wet Location



FCC Compliant



Title 24 Compliant

# FLIN

4" & 6"

## ROUND LUMINAIRES



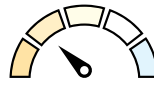
**NEFLINTW-R4**

4" Round



**NEFLINTW-R6**

6" Round



Selectable CCT

FINISH:



**MPW** = Matte Powder White

Size / Shape	CCT	Input Voltage
<b>NEFLINTW-R4MPW</b> 4" Round	Selectable CCT (27K/30K/35K/40K/50K)	<b>(blank)</b> 120V
<b>NEFLINTW-R6MPW</b> 6" Round		<b>LE4</b> 120-277V

Example: **NEFLINTW-R6MPWLE4** = 6" FLIN Round, Selectable CCT, 120-277V input

## SQUARE LUMINAIRES



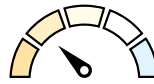
**NEFLINTW-S4**

4" Square



**NEFLINTW-S6**

6" Square



Selectable CCT

FINISH:



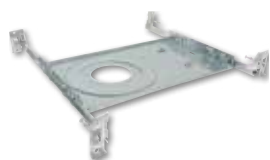
**MPW** = Matte Powder White

Size / Shape	CCT	Input Voltage
<b>NEFLINTW-S4MPW</b> 4" Square	Selectable CCT (27K/30K/35K/40K/50K)	<b>(blank)</b> 120V
<b>NEFLINTW-S6MPW</b> 6" Square		<b>LE4</b> 120-277V

Example: **NEFLINTW-S4MPWLE4** = 4" FLIN Square, Selectable CCT, 120-277V input

**NEW CONSTRUCTION FRAME-INS**

---



**NF-R246** for Round only  
Universal Frame-In



**NFC-R430** for 4" Round  
**NQZ-6R-F** for 6" Round  
Frame-In with Collar



**NFP-S425** for 4" Square  
**NFP-S625** for 6" Square  
Frame-In Plate

Frame-Ins

- |                 |                                   |
|-----------------|-----------------------------------|
| <b>NF-R246</b>  | Universal Frame-In for Round only |
| <b>NFC-R430</b> | Frame-In with Collar for 4" Round |
| <b>NQZ-6R-F</b> | Frame-In with Collar for 6" Round |
| <b>NFP-S425</b> | Frame-In Plate for 4" Square      |
| <b>NFP-S625</b> | Frame-In Plate for 6" Square      |

**MOUNTING ACCESSORIES**

---



**NEFLINTW-OR**  
Oversize Ring



**NEFLINTW-EW**  
Extension Cables

Mounting Accessory

- |                         |                            |
|-------------------------|----------------------------|
| <b>NEFLINTW-4OR-MPW</b> | Oversize Ring for 4" Round |
| <b>NEFLINTW-6OR-MPW</b> | Oversize Ring for 6" Round |
| <b>NEFLINTW-EW-4</b>    | 4' Extension Cable         |
| <b>NEFLINTW-EW-20</b>   | 20' Extension Cable        |

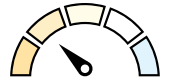


Scan for info.

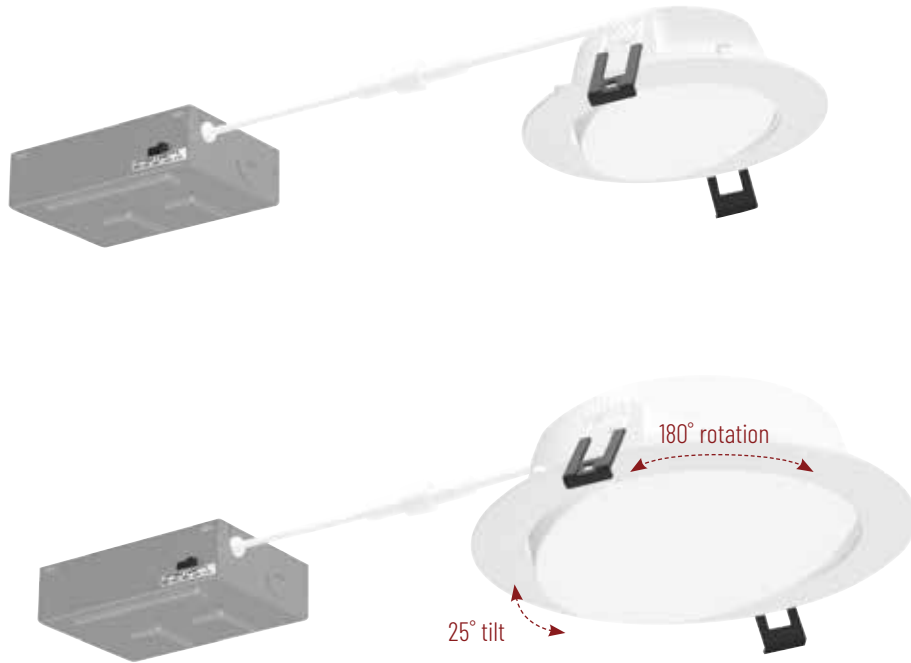


# FLIN ADJUSTABLE

4" & 6"



Selectable CCT



## TRIMS

### Aperture Size

4" & 6"

### Shape

Round

### Type

Adjustable Wafer Downlight  
25° Tilt & 180° Rotation

### Finish



Matte Powder White

## LIGHT OUTPUT

### Lumens / Wattage

4" / 900lm / 10W  
6" / 1100lm / 13.5W

### Color Temperature

Selectable CCT



### Color Rendering Index

90+ CRI

### Optic

Fixed - 114° Wide Flood

## ELECTRICAL

### Input Voltage

120VAC

### Dimming

Triac or ELV

### Listings & Warranty



IC Rated



Air Tight



cETLus Listed



Wet Location



FCC Compliant



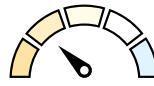
Title 24 Compliant



# FLIN ADJUSTABLE

4" & 6"

## LUMINAIRES



Selectable CCT

FINISH:



MPW = Matte Powder White



**NFLINA-R4TW**

4" FLIN Adjustable



**NFLINA-R6TW**

6" FLIN Adjustable

Size	CCT	Finish
<b>NFLINA-R4</b> 4" FLIN Adjustable	<b>TW</b> Selectable CCT (27K/30K/35K/40K/50K)	<b>MPW</b> Matte Powder White
<b>NFLINA-R6</b> 6" FLIN Adjustable		

Example: **NFLINA-R6TWMPW** = 6" FLIN Adjustable, Selectable CCT, Matte Powder White Finish

## NEW CONSTRUCTION FRAME-INS

---



**NF-R246**

Universal Frame-In



**NFC-R430**

for 4" only  
Frame-In with Collar



**NFP-R413**

**NFP-R613**

for 4"  
for 6"

Frame-In Plate

---

### Frame-Ins

**NF-R246**

Universal Frame-In

**NFC-R430**

Frame-In with Collar for 4" only

**NFP-R413**

Frame-In Plate for 4" only

**NFP-R613**

Frame-In Plate for 6" only

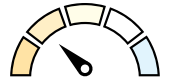


Scan for info.

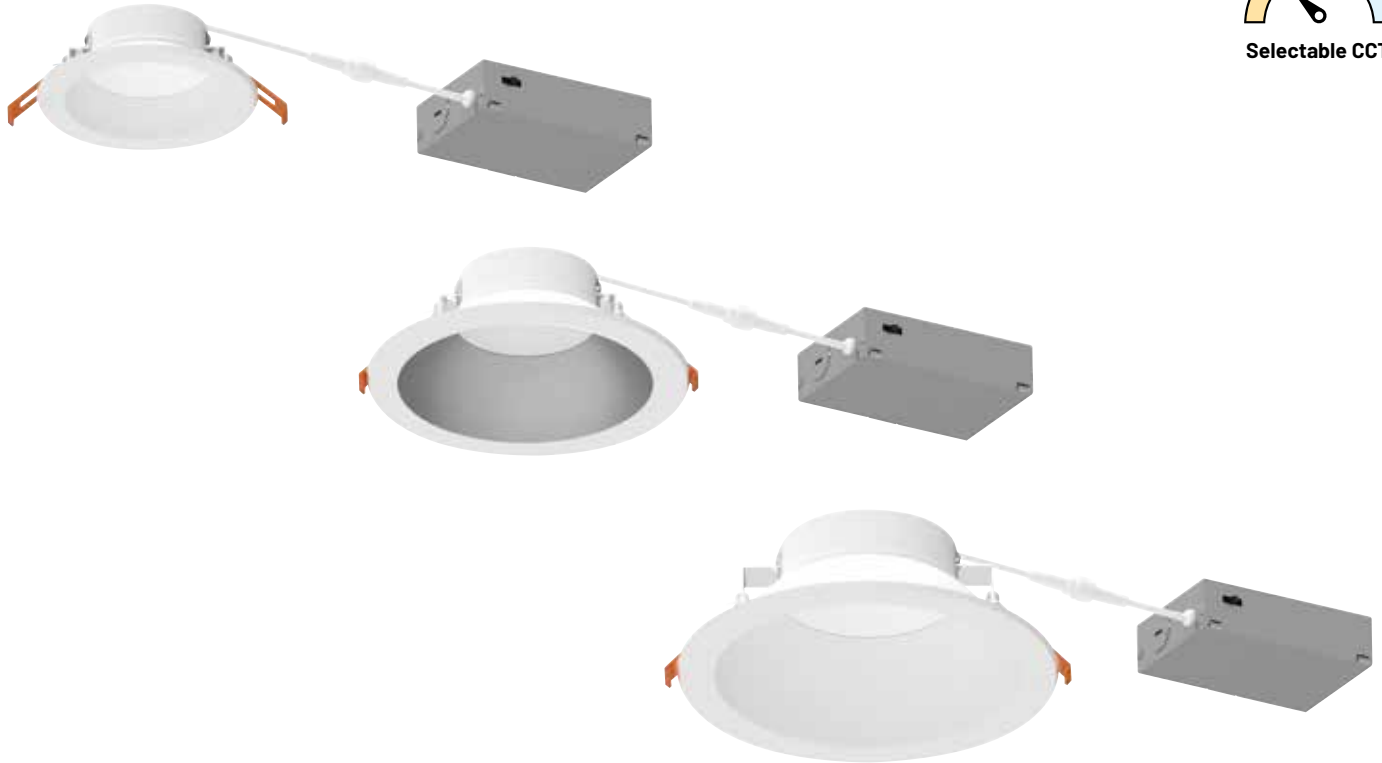


# THEIA

4", 6" & 8"



Selectable CCT



## TRIMS

### Aperture Size

4", 6" & 8"

### Shape

Round

### Type

Deep Downlight

### Finish



Haze / Matte Powder White



Matte Powder White

## LIGHT OUTPUT

### Lumens / Wattage

4" / 950lm / 10W  
6" / 1400lm / 15W  
8" / 2100lm / 22W

### Color Temperature

Selectable CCT



### Color Rendering Index

90+ CRI

### Optic

Fixed - 94° Flood

## ELECTRICAL

### Input Voltage

120VAC or 120-277VAC

### Dimming

Triac or ELV (120V)  
0-10V (120-277V)

### Listings & Warranty



IC Rated



Air Tight



cETLus Listed



Wet Location



FCC Compliant



Title 24 Compliant

# THEIA

4", 6" & 8"

## LUMINAIRES



**NLTH-41TW**

4" Theia



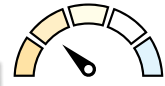
**NLTH-61TW**

6" Theia



**NLTH-81TW**

8" Theia



**Selectable CCT**

**FINISH:**



**HZMPW** = Haze / Matte Powder White



**MPW** = Matte Powder White

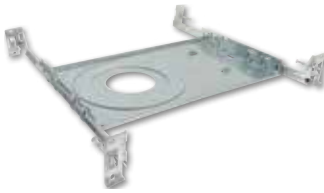
Size	CCT	Finish	Input Voltage / Dimming
<b>NLTH-41</b>	4" Theia	<b>TW</b> Selectable CCT (27K/30K/35K/40K/50K)	<b>(blank)</b> 120V; Triac/ELV
<b>NLTH-61</b>	6" Theia	<b>HZMPW</b> Haze / Matte Power White	<b>LE4</b> 120-277V; 0-10V
<b>NLTH-81</b>	8" Theia	<b>MPW</b> Matte Power White	

Example: **NLTH-61TWHZMPW** = 6" Theia, Selectable CCT, Haze Reflector / Matte Powder White Flange



**NEW CONSTRUCTION FRAME-INS**

---



**NF-R246** for 4" & 6"

Universal Frame-In



**NFC-R430** for 4" only  
**NQZ-6R-F** for 6" only  
**NFC-R725** for 8" only

Frame-In with Collar



**NFP-R413** for 4" only  
**NFP-R613** for 6" only  
**NFP-R725** for 8" only

Frame-In Plate

Frame-Ins

<b>NF-R246</b>	Universal Frame-In for 4" & 6" only
<b>NFC-R430</b>	Frame-In with Collar for 4"
<b>NQZ-6R-F</b>	Frame-In with Collar for 6"
<b>NFC-R725</b>	Frame-In with Collar for 8"
<b>NFP-R413</b>	Frame-In Plate for 4"
<b>NFP-R613</b>	Frame-In Plate for 6"
<b>NFP-R725</b>	Frame-In Plate for 8"

**REMOTE EMERGENCY**

---



**NEPK-20LEDUNV** for 4"

Emergency Battery

Remote Emergency

<b>NEPK-20LEDUNV</b>	20W Battery for 4" only
----------------------	-------------------------



Scan for info.



# QUARTZ

4", 6" & 8"



Selectable Lumens & CCT



## TRIMS

### Aperture Size

4", 6" & 8"

### Shape

Round or Square

### Type

Downlight

### Finish



Matte Powder White

## LIGHT OUTPUT

### Lumens / Wattage

Selectable Lumens  
4" / 850lm to 1250lm (round)  
6" / 1350lm to 2200lm (round)  
6" / 1300lm to 2150lm (square)  
8" / 1650lm to 2700lm (round)  
8" / 2050lm to 3300lm (square)

### Color Temperature

Selectable CCT



### Color Rendering Index

90+ CRI

### Optic

Fixed

## ELECTRICAL

### Input Voltage

120-277VAC

### Dimming

0-10V

### Listings & Warranty



IC Rated



Air Tight



cETLus Listed



cETLus Classified



Wet Location



Energy Star Certified



FCC Compliant



Title 24 Compliant

# QUARTZ

4", 6" & 8"

## ROUND LUMINAIRES



**NQZ2-41TWTW**

4" Round



**NQZ2-61TWTW**

6" Round



**NQZ2-81TWTW**

8" Round



Selectable  
Lumens & CCT

**FINISH:**



**MPW** = Matte Powder White

Size / Shape	CCT	Finish
<b>NQZ-41TW</b> 4" Round	<b>TW</b> Selectable CCT (3000K/3500K/4000K)	<b>MPW</b> Matte Power White
<b>NQZ-61TW</b> 6" Round		
<b>NQZ-81TW</b> 8" Round		

Example: **NQZ-61TWTWMPW** = 6" Quartz Round, Selectable Lumens & CCT, Matte Powder White Finish

## SQUARE LUMINAIRES



**NQZ2-66TWTW**

6" Square



**NQZ2-86TWTW**

8" Square



Selectable  
Lumens & CCT

**FINISH:**



**MPW** = Matte Powder White

Size / Shape	CCT	Finish
<b>NQZ-66TW</b> 6" Square	<b>TW</b> Selectable CCT (3000K/3500K/4000K)	<b>MPW</b> Matte Power White
<b>NQZ-86TW</b> 8" Square		

Example: **NQZ-66TWTWMPW** = 6" Quartz Square, Selectable Lumens & CCT, Matte Powder White Finish

## REFLECTOR INSERTS



**NQZ-41REFL** for 4" only

Reflector Insert



**NQZ-61REFL** for 6" only

Reflector Insert



**NQZ-81REFL** for 8" only

Reflector Insert

### FINISH:



**C** = Specular Clear



**D** = Clear Diffused



**HZ** = Haze

Reflector Insert Size	Finish
<b>NQZ-41REFL</b> for 4" round	<b>C</b> Specular Clear
<b>NQZ-61REFL</b> for 6" round	<b>D</b> Clear Diffused
<b>NQZ-81REFL</b> for 8" round	<b>HZ</b> Haze

## MOUNTING ACCESSORIES



**NQZ-4R-F** for 4" round  
**NQZ-6R-F** for 6" round  
**NQZ-8R-F** for 8" round

Frame-In with Collar



**NQZ-6S-F** for 6" square  
**NQZ-8S-F** for 8" square

Frame-In with Collar



**NQZ-80R-MPW** for 8"

Oversize Ring

Description	
<b>NQZ-4R-F</b>	Frame-In with Collar for 4" round
<b>NQZ-6R-F</b>	Frame-In with Collar for 6" round
<b>NQZ-6S-F</b>	Frame-In with Collar for 6" square
<b>NQZ-8R-F</b>	Frame-In with Collar for 8" round
<b>NQZ-8S-F</b>	Frame-In with Collar for 8" square
<b>NQZ-80R-MPW</b>	Oversize Ring for 8" round

## REMOTE EMERGENCY



**NEPK-20LEDUNV**

Emergency Battery

Remote Emergency

**NEPK-20LEDUNV** 20W Battery



# COMPARISON OF CAN-LESS RECESSED LUMINAIRES



BASIC INFO	Name	M1	M1+	M2	M2 Trimless	M4	lolite Can-less
	Part Number	NM1-170	NM1-PRDC	NM2	NM2-2RTLDC	NM4	NIOC
	Aperture	1"	1"	2"	2"	4"	1", 2" and 4"
PERFORMANCE	Lumens	100lm	600lm	400lm to 850lm	750lm or 900lm	950lm or 1100lm	750lm or 900lm
	CCT	2700K or 3000K	2700K or 3000K	2700K, 3000K or 4000K	2700K, 3000K or 4000K	2700K or 3000K	2700K, 3000K, 3500K, 4000K or Comfort Dim
	Input Voltage	12VDC	120VAC	120VAC	120VAC	120VAC	120VAC
	Dimming	Specified by driver	Triac or ELV	Triac or ELV	Triac or ELV	Triac or ELV	Triac or ELV
APPLICATION	Trim Types	Round, Square, Indicator, Louver	Round or Square	Round, Square, Adjustable, Multiples	Trimless	Round, Square, Adjustable	Round, Square, Adjustable, Pinhole
	Finishes	Black, Brushed Nickel, White	Black, Bronze, White	Black or White	Black or White	Black or White	Black, Haze or White
	Beam Spread	Field Changeable (Four Included)	Fixed	Fixed (Elbow includes two)	Fixed	Fixed (Elbow includes two)	Field Changeable (Three Included)
	Accessory	Trims, Frame-In, Cables	Trims, Frame-In, Cables	Trims, Frame-In, Cables	Mud Plate, Cables	Trims, Frame-In, Cables	Frame-In, Cables, Optics
CUSTOMIZATION	Installation Type	IC Rated	IC Air-Tight	IC Air-Tight	IC Air-Tight	IC Air-Tight	IC Air-Tight
	Listing	Wet	Wet	Damp or Wet	Damp	Damp or Wet	Damp or Wet
	Title 24	No	Yes	Yes	Yes	Yes	Yes

## COMPARISON OF CAN-LESS RECESSED LUMINAIRES



BASIC INFO	Name	M-Wave	M-Curve	FLAT	FLIN	FLIN Adjustable	Theia	Quartz
	Part Number	NMW	NMC	NFLAT	NEFLINTW	NFLINA	NLTH	NQZ2
	Aperture	2" and 4"	4" and 6"	4" and 6"	4" and 6"	4" and 6"	4", 6" and 8"	4", 6" and 8"
PERFORMANCE	Lumens	750lm or 1250lm	900lm or 1300lm	700lm or 1050lm	650lm to 1300lm	900lm or 1100lm	950lm to 2100lm	1250lm to 3300lm
	CCT	2700K or 3000K	Selectable CCT (27K/30K/35K/ /40K/50K)	Selectable CCT (27K/30K/35K/ /40K/50K)	Selectable CCT (27K/30K/35K/ /40K/50K)	Selectable CCT (27K/30K/35K/ /40K/50K)	Selectable CCT (27K/30K/35K/ /40K/50K)	Selectable CCT (30K/35K/40K)
	Input Voltage	120VAC	120VAC	120VAC	120VAC or 120-277VAC	120VAC	120VAC or 120-277VAC	120-277VAC
	Dimming	Triac or ELV	Triac or ELV	Triac or ELV	Triac or ELV	Triac or ELV	Triac/ELV or 0-10V	0-10V
APPEARANCE	Trim Types	Adjustable	Adjustable	Round Non-Metallic	Round or Square Baffle	Adjustable	Reflector	Reflector
	Finishes	Black or White	White	Black or White	White	White	Haze or White	White (inserts available)
	Beam Spread	Field Changeable	Fixed	Fixed	Fixed	Fixed	Fixed	Fixed
	Accessory	Frame-In, Cables, Optics	Frame-In	Frame-In, Cables	Frame-In, Cables	Frame-In	Frame-In, Emergency	Inserts, Frame-In, Emergency
CUSTOMIZATION	Installation Type	IC Air-Tight	IC Air-Tight	IC Air-Tight	IC Air-Tight	IC Air-Tight	IC Air-Tight	IC Rated
	Listing	Wet	Wet	Wet	Wet	Wet	Wet	Wet
	Title 24	Yes	Yes	Yes	Yes	Yes	Yes	Yes

# Notes





**NORA LIGHTING, INC.**  
6505 Gayhart St.  
Commerce, CA 90040  
TEL 323.767.2600  
FAX 323.722.3677  
[www.NoraLighting.com](http://www.NoraLighting.com)

**DOMESTIC FACILITIES:**

Cincinnati, OH  
Dallas, TX  
Detroit, MI  
Edison, NJ  
Los Angeles, CA  
Minneapolis, MN  
Nashville, TN

**INTERNATIONAL SALES:**

6505 Gayhart St.  
Commerce, CA 90040  
TEL 323.767.2600  
FAX 323.722.3677

The products shown in this catalog  
are covered by USA and International  
patents. Specifications subject to  
change without notice.

© Copyright 2025 Nora Lighting, Inc.  
All rights reserved

5.5M ML-RECCANC0225

