

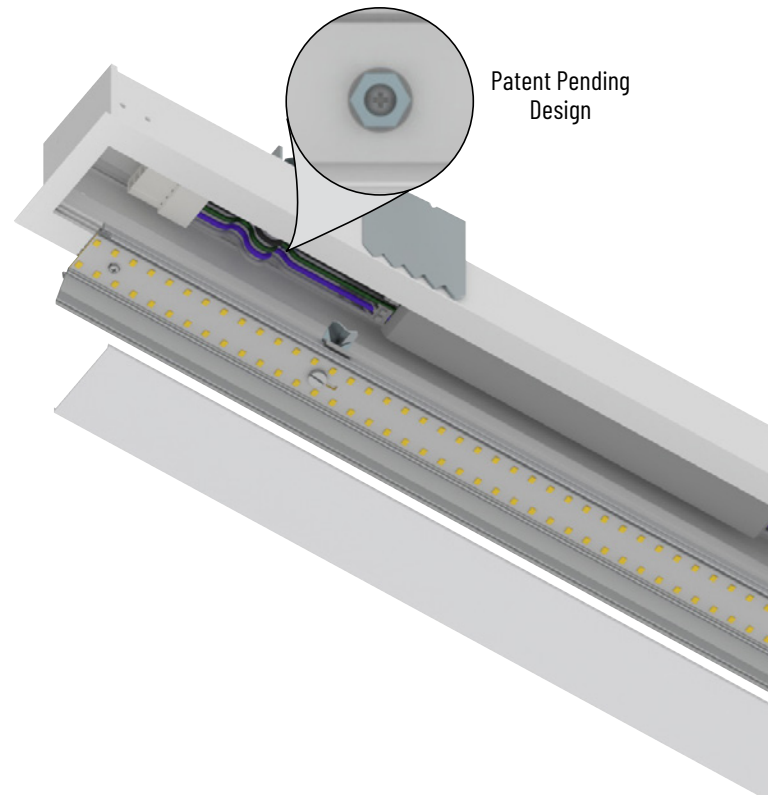
L-Line Recessed

2' to 8' Linear • 1050lm per foot
Dedicated CCT (30K, 35K or 40K)

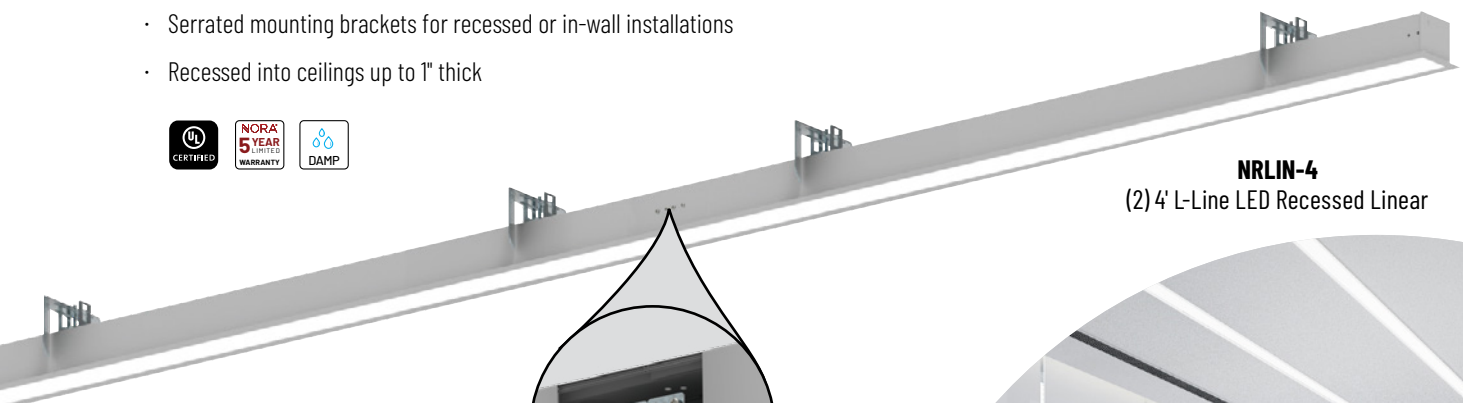
L-Line series offers a clean and modern appearance with a sleek extruded aluminum housing. Symmetrical light distribution will evenly illuminate surfaces with a diffused lens, making the L-Line ideal for commercial, retail, healthcare and education applications.

FEATURES

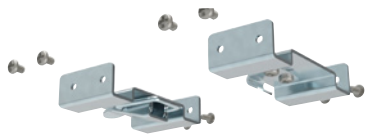
- 120-277V input; 0-10V dimming
- 2' to 8' Linear luminaires
- 1050 lumens per foot
- Dedicated CCT (3000K, 3500K or 4000K)
- Luminaires can be connected together with bracket accessory
- Patent Pending Design
- Serrated mounting brackets for recessed or in-wall installations
- Recessed into ceilings up to 1" thick



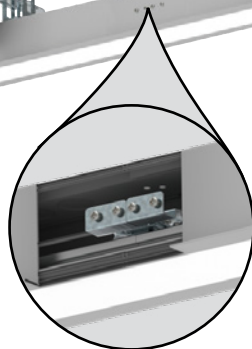
Patent Pending Design



NRLIN-4
(2) 4' L-Line LED Recessed Linear



NRLIN-BRKT
Brackets for Continuous Runs



L-LINE RECESSED LINEAR LUMINAIRES

LENGTH	LUMENS PER FOOT	CCT	FINISH
NRLIN-2 2' Linear (actual: 25")	10 1050lm/ft.	30 3000K	A Aluminum
NRLIN-4 4' Linear (actual: 49")		35 3500K	W White
NRLIN-8 8' Linear (actual: 93.375")		40 4000K	

Ex.: **NRLIN-21030A** = 2' L-Line LED Recessed Linear, 1050lm/ft., 3000K, Aluminum finish