

The logo for NORA LIGHTING is centered on the page. It features the word "NORA" in a large, bold, red, sans-serif font with a registered trademark symbol (®) to its upper right. Below "NORA", the word "LIGHTING" is written in a smaller, bold, red, sans-serif font, with each letter spaced out.

NORA[®]
L I G H T I N G

PRODUCT PREVIEW

2ND Quarter 2023



Jason LED Track



LED Tape Light
L-Line LED Linear



iLENE LED Mini Cylinder



Cobalt Adjustable LED Downlight
RLM LED Pendant
LEDUR TW Under Cabinet



Large enough to do it right, Small enough to care.

FAMILY OWNED BUSINESS SINCE 1989

Since our founding in 1989, Nora Lighting has grown from a small importer of lighting fixtures to a designer and manufacturer of quality LED and non-LED residential and commercial lighting. Our long-time customers and reps are familiar with our humble beginnings as a company and for those of you who are newer to Nora, this story is at the core of how we make choices and how we operate and thrive as a business.

Jilla and I fled Iran in 1987 as refugees and started Nora Lighting two years later in a 1,000 ft² office with only 4 SKU's. With no lighting background or business network in the US, we earned our customers' trust through honest business practices, exceptional service, and quality products. Our same core values of "Service, Quality, and Value" are still very much true today. Through tireless hard work with our amazing Nora team, we were able to expand our product offering, engineering capabilities, warehousing, and sales network to what it is today. We proudly boast a portfolio of over 40,000 SKUs and have our products stocked in over 300,000 ft² of warehouse space across the country.

In 2013, our daughter Neda joined our business to lead it into the second generation. We have supported this next generation of our business with large investments in company infrastructure, inventory, warehousing, and personnel. Our 100% cloud-based ERP system allows us and you to access real-time information from anywhere at any time and has increased our inventory accuracy to over 98% month-over-month. Our newly renovated R&D center is equipped with the latest technology and a UL certified lab. Our product offering, with its quality and pricing is unparalleled in our industry. Our warehouses are filled wall-to-wall with inventory and in 2022 alone, we added two new distribution centers and added two new sales territories to allow us to better serve our customers and reps.

We look forward to welcoming you to our new state-of-the-art showroom and training facility in Los Angeles starting in 2023. To know us is to understand our slogan of "large enough to do it right, small enough to care." We are a proud family-owned and operated business. Doing business with Nora means you come first because family always comes first.

Thank you for trusting us and supporting us over the last 30+ years. We are confident that we have positioned ourselves for another very successful 30+ years.

A handwritten signature in black ink that reads "Fred Farzan".

Fred Farzan
President



Specular Clear reflectors now available



NC2-431
4" Open Reflector

NC2-638
6" Decorative Glass

NC2-836
8" Wall Wash

NCR2-61
6" Retrofit Open Reflector

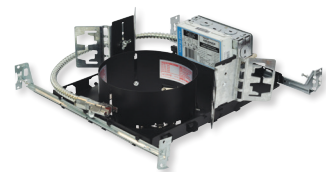


SAPPHIRE SERIES

Architectural and Commercial LED Downlights
Up to 8000 lumens · 2700K to 4000K or Comfort Dim

Sapphire II luminaires are a high efficiency, commercial series available in 900 to 4500 lumen packages in 2700K, 3000K, 3500K and 4000K at 90+ CRI. Luminaires utilize the latest COB technology by Cree®, allowing for better optic control offering three beam spreads. Beam spreads focus the light down to the work plane from high ceiling applications. Sapphire I luminaires are available in 6000 or 8000lm in 3000K, 3500K or 4000K. Both series are available in new construction, remodel and retrofit configurations. The fixtures are specifiable in 120V and 277V, cULus listed for wet locations, ENERGY STAR certified and a 5-year limited warranty.

Universal Housing has Adjustable Collar for Deep Ceilings



NCAH2
Architectural/Commercial
New Construction Housing



Scan for info.



ADJUSTABLE SAPPHIRE II

4", 6" and 8" LED Downlights
Over 3000lm / 35° adjustment

Sapphire commercial downlights now include a high lumen adjustable with a bias cut reflector. Utilizing Cree® COB technology, Sapphire Adjustable Series is available from **900 to 3000+ lumen packages in 2700K, 3000K, 3500K and 4000K at 90+ CRI**. Adjustable luminaires are offered in three beam spreads to focus the light to the desired space. The fixtures have universal 120-277V input, 0-10V and Triac dimming, cULus listed, ENERGY STAR certified and a 5-year limited warranty.



NCAH2
Adjustable Sapphire II Non-IC
New Construction Housing



NRM2-413
4" Square

NRM2-519
5" Adjustable
Regressed Reflector

NRM2-612
6" Baffle

NRM2-611
6" Retrofit Reflector

Scan for info.



MARQUISE II

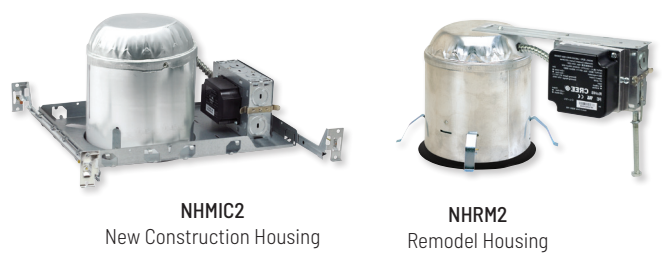
Light Commercial / High-End Residential
LED Downlights + Retrofit

Utilizing the same Cree COB LED and driver packages as the Sapphire II, the Marquise II series features LED packages for light commercial and high-end residential **IC and non-IC** applications from **900 to 2500 lumens in 2700K, 3000K, 3500K and 4000K**. Marquise II is available in **4", 5" and 6" reflector, adjustable, slope ceiling and Retrofit**. The Marquise II uses the latest COB technology by Cree®, allowing for for better optic control offering three beam spreads. Beam spreads focus the light down to the work plane from high ceiling applications. The Marquise II series is available in new construction, remodel and retrofit configurations.



NRM2-6S12
6" Sloped Baffle

NRM2-926
6" Sloped Housing



NRM2
New Construction Housing

NRM2
Remodel Housing





NQZ2-41TWTW-MPW
4" Open Reflector



NQZ2-61TWTW-MPW
6" Open Reflector



NQZ2-81TWTW-MPW
8" Open Reflector

QUARTZ

Architectural and Commercial LED Downlights 4", 6" and 8" / Selectable Lumens & Selectable CCT

Quartz Series features two tunable switches located on the top of the driver unit on each luminaire; Selectable Lumens allows the end user to determine the wattage and Selectable CCT allows for selectable color temperature. Quartz series features LED packages from **800 to 2700 lumens in 3000K, 3500K or 4000K at 90+ CRI**. Each reflector comes standard with matte powder white finish, optional snap-in reflectors in haze, specular clear and diffused clear finishes and oversized rings are available. The luminaires require no frame-in or housing, ideal for retrofit, new construction or remodel applications (new construction frame-ins are available). Fixtures are offered with universal input 120V-277V, 0-10V dimming, cETLus listed for wet locations, ENERGY STAR certified, and have a 5-year limited warranty.



Selectable Lumens
Three position sliding switch



Selectable CCT
Three position sliding switch
3000K / 3500K / 4000K

Specular Clear
insert & emergency
options now available



NQZ-xIREFLC
Specular Clear Reflector Insert



NQZ
New Construction
Frame





NM2-MLS3

3-Head Multiple Plate

Scan for info.



NM2-2RDC
M2 Downlight

M2 MULTIPLES

Modular Multiple Lighting System
Customizable with Four Trim Types
Each luminaire can deliver up to 600 lumens

Our M2 LED luminaires are now available in a Multiple Lighting System (MLS). The modular system requires components be ordered a la carte to create a recessed multiple. Available in **one, two, and three light** linear configurations, the units are completely serviceable from below and require **no housing**. M2 LED luminaires are available in **four round options** in **2700K or 3000K** and delivering **up to 600 lumens**. Each luminaire can be customized with accessories that include **pinhole trim, wall wash trim or reflector inserts**.



M2 LED Multiple Lighting System
Marquise LED Downlights



FLANGED + TRIMLESS LED MULTIPLES

LED Dedicated and Medium Base PAR30
Multiple Lighting System

LED dedicated MLS luminaires allow for adjustable lighting modules and pull-down adjustables in flanged and trimless styles. Offered in **one, two, and three light** linear configurations, the units are completely serviceable from below and can be specified in either **120V or 277V**. MLS can be wired as a single complete unit or as two to three individually controlled or dimmed modules.

Trimless LED adjustable MLS produces **2100lm per gimbal** in **2700K, 3000K, 3500K or 4000K** with specifiable beam spreads. The mud plates frame the housing with a clean sharp edge leaving a smooth flangeless appearance that blends in with the ceiling line. Flange kits and medium base version are also available.

The Flanged MLS LED fixtures produce **900 to 2500 lumen output** in **2700K, 3000K, 3500K or 4000K** with specifiable beam spreads. The MLS face plate is regressed to maintain a clean ceiling appearance. Trim finishes are **white/white (shown), white/black, and silver/silver**.

The Pull-Down units offer the ultimate in flexibility. Each LED module can be left in the housing and adjusted or can be pulled down partially or completely to gain full adjustability in aiming the fixture. Each module produces **2100 lumens at 90+CRI** in **2700K, 3000K, 3500K, or 4000K CCTs** options. Available in **white or black finishes, flanged and trimless styles**, the MLS LED Pull-Down can be specified with spot or flood beam spreads.



Scan for info.



NMRG2-11 & NMRT2-11
Flanged MLS

NMRTL-12 & (2) NMRT-652TL
Trimless MLS



NMRTL-13
Pull Down MLS
Shown with flange kit.



IC Rated
Accepts flanged and trimless mud plate in ceilings up to 1-1/2"

Flanged or Trimless
Painted flange or trimless mud plate in one, two or three heads

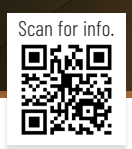
- 2700K
- 3000K
- 3500K
- 4000K
- 5000K
- COMFORT DIM

Die-Cast Aluminum Heat Sink
with COB LED technology

- SPOT
- NARROW FLOOD
- FLOOD

Field Changeable Optics
Each module includes spot, narrow flood and flood optics

Four Trim Styles
available in Fixed Downlight, Adjustable Snoot, Adjustable Gimbal & Wall Wash in variety of finishes



IOLITE MULTIPLES

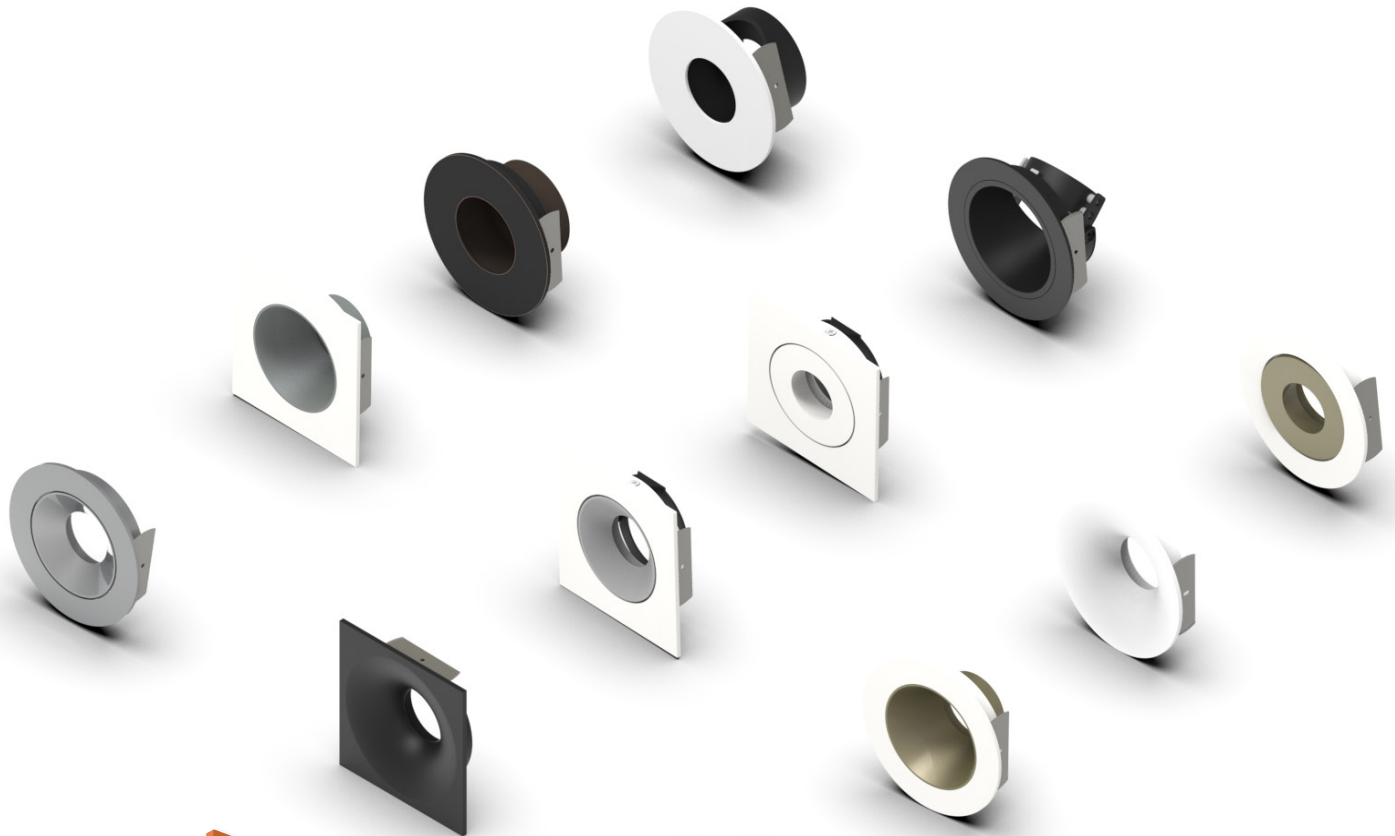
1000lm per head / Single to Three Light Configurations
Customizable with Four Trim Styles
Now Available with Trimless Mud Plate!



The popular Iolite Downlight Series is now available in multiple lighting system configurations. Iolite MLS is customizable in **one, two, and three light** linear configurations with **four different trim types**—downlight, adjustable snoot, adjustable gimbal or wall wash. Trims can be installed with painted flange or trimless clean appearance. The IC rated housing is completely serviceable from below and includes individual 120V-277V Triac/ELV/0-10V drivers for each module.

Iolite MLS Series LED dedicated units feature COB LED technology. Each individual luminaire produces **over 1000 lumens** in 2700K, 3000K, 3500K, 4000K, 5000K or 800lm with **Comfort Dim technology**. Trim finishes include **matte powder white, black or haze** and trim options are customizable. Each trim includes three field-adjustable optics, optional premium TIR optics are available. Trims can be re-arranged in the field to desired configuration and adjustment.



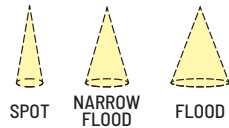
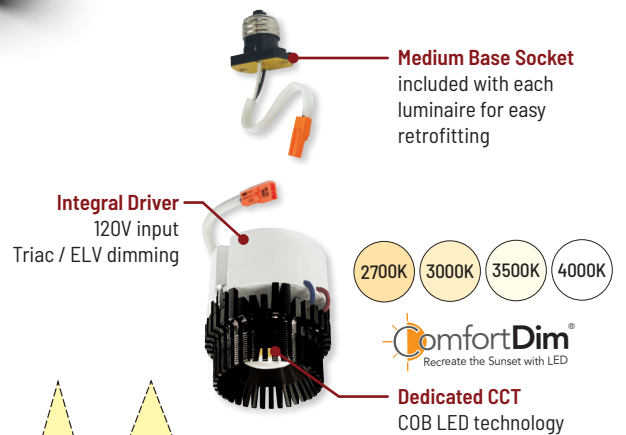


5"/6" Trims
now available



NPR-56RND
5 1/2" Downlight

NPR-4RND
4" Downlight



Field Changeable Optics
Each module includes spot,
narrow flood & flood optics

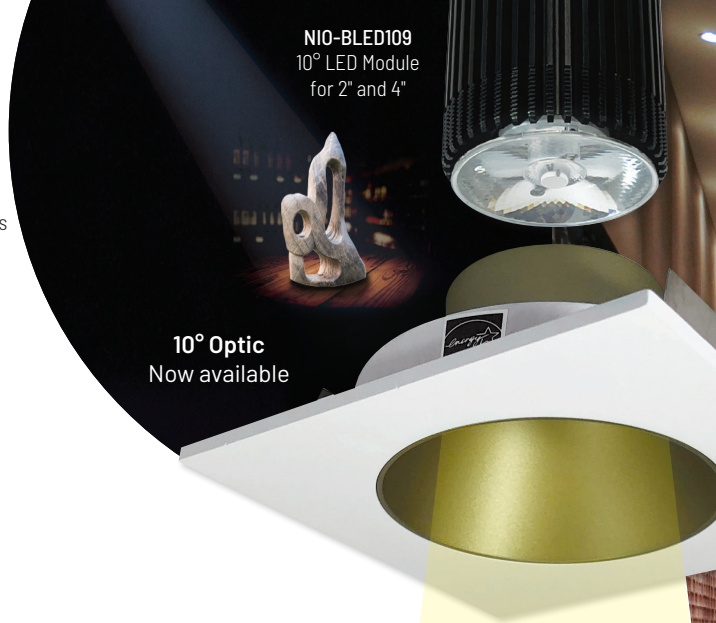


PEARL RETROFIT

4", 5" & 6" Round and Square Reflectors
Over 1000 lumens & fits shallow housings

Pearl LED Retrofit luminaires are the high-end, quality solution for easy LED retrofitting in residential and light commercial applications. With a maximum height of just 4-1/2", luminaires can be retrofitted in most 4" IC and non-IC housings--including shallow! Available in a beautiful array of fixed and adjustable styles in ten finishes, each Pearl includes three field changeable optics for maximum design control. Optional accessories can further customize the fixtures.





NIO-4SNB
4" Iolite Square Bullnose



NIO-4SNDC
4" Iolite Square Downlight



NIO-4RNDC
4" Iolite Round Downlight

Scan for info.



IOLITE SERIES

1", 2" and 4" LED Downlights
Dedicated and Retrofit
800 to 2500 Delivered Lumens

Iolite family is a series of 1", 2", and 4" dedicated and 4" retrofit LED adjustable downlights in square and round apertures. This modular die-cast aluminum system features the patented, easy, no-tool-required replacement of the driver, COB LED technology and one of the largest trim selections in the industry. The reflectors have sharp, clean edges and can be aimed down for general lighting or adjusted to highlight or wall wash a focal point. Each reflector includes three field adjustable optics and accept optional accessories to customize each application. Iolite LED module deliver 600lm (1") or 800-2500lm (2" and 4") in various kelvin temperatures (2700K to 5000K) or Comfort Dim (3100K-2000K). Housings include an IC Air-Tight New Construction, Chicago Plenum, Remodel or 4" Retrofit. Dimming drivers include Lutron EcoSystem®, 0-10V, Triac or ELV and emergency options.





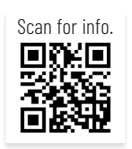
Dedicated Housing
Patented driver assembly allows for tool-less removal

Mud Ring
Round or Square Die-Cast Aluminum

Die-Cast Aluminum Heat Sink
with COB LED technology

Field Changeable Optics
Each module includes spot, narrow flood and flood optics

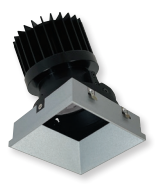
SPOT **NARROW FLOOD** **FLOOD**



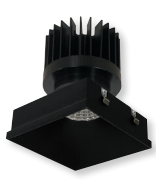
NIO-4PRTLA
4" PLUS Adjustable



NIO-4PRTLNDNC
4" PLUS Downlight



NIO-4PSTLA
4" PLUS Adjustable



NIO-4PSTLNDNC
4" PLUS Downlight



NIO-4RTSLA
4" Round Adjustable Slot



NIO-4RTFA
4" Trimless Flange Accessory

IOLITE TRIMLESS

2" and 4" Round and Square Reflectors
New 4" Flange accessory for trimless

Iolite Trimless has no exposed trim flange and does not extend below the ceiling plane. This clean and sophisticated look is accomplished by mudding the trimless mud ring to the ceiling, then snapping the trimless reflector into the ring. **Iolite Trimless** is available in 2" and 4" round or square apertures. **New 4" PLUS series** features **round and square adjustable and fixed downlight**. Trimless requires three parts: Iolite Housing, Mud Ring and Reflector. Each trimless delivers from **800 to 2500 lumens** in various kelvin temperatures (**2700K to 5000K**) or **Comfort Dim** (warm dim).



NIO-2RTLTA
2" Adjustable



NIO-4STLNDNC
4" Downlight



NIO-4RTLNDNC / NIO-4RTFA
4" Round Downlight with Flange Accessory



120V Input
Triac or ELV dimming

Quick Connects
Easy installation in
IC Air-Tight installations



Dedicated CCT
COB LED technology



Field Changeable Optics
Each module includes spot,
narrow flood and flood optics

Five Trim Styles
Downlight, Adjustable,
Bullnose, Pinhole, & Square
in variety of finishes

Scan for info.



IOLITE CAN-LESS

1", 2" & 4" LED Downlights
No Housing Required!

Award winning Iolite small aperture LED downlights are now available without any recessed housings. Simply cut the ceiling, wire the junction box and insert the luminaire in the ceiling cavity. IC Air-Tight rated luminaires are available in round or square apertures in a variety of styles and finishes. Available in three aperture sizes and up to 1250 lumens in dedicated color temperatures. Each LED module includes three field changeable optics to customize each application. Dedicated color temperatures include 2700K, 3000K, 3500K, 4000K or Comfort Dim (warm dimming).



NIOC-1RNB
1" Bullnose



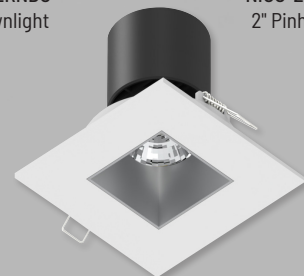
NIOC-2RND
2" Downlight



NIOC-2RPH
2" Pinhole



NIOC-4RSLA
4" Adjustable



NIOC-4SNSQ
4" Square Downlight





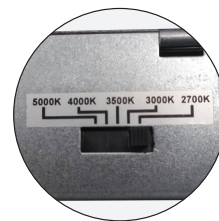
Scan for info.



THEIA SERIES

4", 6" 8" Can-less Downlights with Deep Reflector
 5 Selectable CCTs (27K / 30K / 35K / 40K / 50K)
 Up to 2100lm • IC Air-Tight

Commercial grade downlights without any frame-in or housing required. Each luminaire includes a dedicated junction box with **integral CCT switch**. 4" (950lm), 6" (1400lm) and 8" (2100lm) downlights are IC air-tight rated, include **five color temperatures (27K / 30K / 35K / 40K / 50K)** and dimmable with compatible Triac or ELV dimmers. Wet location rated luminaires are ideal for variety of applications indoor or outdoor.



Selectable CCT

Five position sliding switch
 27K / 30K / 35K / 40K / 50K



NLTH-41TW-MPW
 4" Theia



NLTH-61TW-MPW
 6" Theia



NLTH-81TW-MPW
 8" Theia



M1 SERIES

1" 12V Can-less Downlights
No housing required & IC rated
100lm / 2W • 2700K or 3000K

M1 miniature 1" recessed downlights features quality and convenience with easy installation for indoor and outdoor applications. LED luminaires include **four plastic downlight trims**, four optics and 6" quick connect for **12V driver**. **No housing is required** and can be installed in insulated ceilings. Field changeable optics and trims allow for each installation to be customized per application. LED luminaires delivers **100 lumens** and available in **2700K or 3000K** at 90+ CRI and requires a 12V dimmable driver. New construction rough-in plate available.

Scan for info.

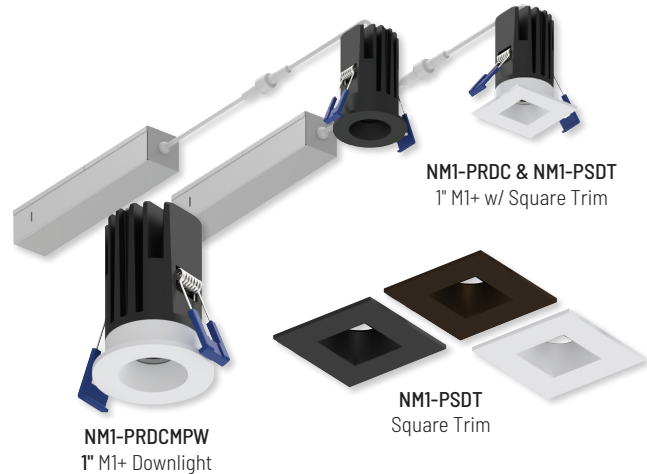


M1+ SERIES

1" 120V Can-less Downlights
No housing required • IC Air-Tight
600lm / 9W • 2700K or 3000K

M1+ is an upgrade to our first generation M1 1" downlights. From 12V input to 120V input with Triac or ELV dimming. From 100 lumens to 600 delivered lumens. Die-cast trims come standard in round matte black or matte powder white finishes. Luminaires include a pre-wired junction box, no housing is required. IC Air-Tight rated luminaires are simple to install.

Scan for info.



Scan for info.



M4 SERIES

4" 120V Can-less Downlights
No housing required • IC Air-Tight
Up to 1150lm • 2700K or 3000K

M4 4" recessed downlights resemble other can-less downlights (M1 and M2). Luminaires include a pre-wired junction box, no housing is required. IC Air-Tight rated luminaires are simple to install with **round or square trims in a variety of styles including downlight, adjustable gimbal or elbow**. Delivering up to **1150 lumens** in **2700K or 3000K** at 90+ CRI. New construction rough-in plate available.



Mud Plate
Installs against drywall
without any housing

120V Input
Triac or ELV dimming

Quick Connects
Easy installation in
IC Air-Tight installations

Patent Pending
Steel plates hold trimless against
magnet inside mud plate

Dedicated CCT
2700K, 3000K or 4000K*
* Select trims



NM2-2RTLDC
Trimless Downlight



Knife edge trimless appearance
with no exposed flange



Trimmed appearance
available in matte black and
matte powder white



M2 SERIES

2" Recessed Downlights
Available in Trimmed and Trimless
400lm to 900lm • 2700K, 3000K or 4000K

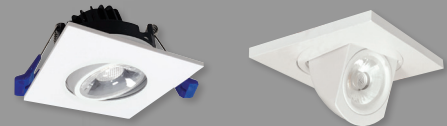
M2 recessed downlights do not require a housing, which makes installation easy. Simply cut the ceiling, wire the junction box and insert the luminaire in the ceiling cavity. IC rated luminaires are available in round or square trims in a variety of styles including downlight, shower, adjustable gimbal, elbow, pinhole, wall wash and baffle and are customizable with accessories. Delivering over 900 lumens in 2700K, 3000K or 4000K at 90+ CRI. New construction rough-in plate available.



NM2-2RDC & NM2-2BAF
Downlight w/ Baffle Insert

NM2-2SDC
Square Downlight

NM2-2SB
Square Baffle



NM2-2RG & NM2-2SGT
Gimbal w/ Square Trim

NM2-2R270 & NM2-2SET
Elbow w/ Square Trim



NM2-RPHB
Pinhole Trim

NM2-2RDCS
Lensed Downlight

NM2-RWB
Wall Wash Trim





Scan for info.

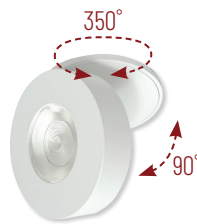


Only 1-3/8"
(NMW-4)

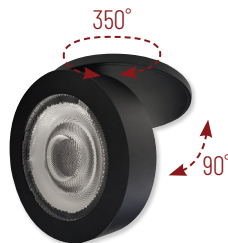
M-WAVE SERIES

Adjustable Can-less Downlights
90° Tilt & 350° Rotation
Selectable CCT (27K/30K/35K/40K/50K)

M-Wave can-less luminaires offer the most versatility for aiming without any housing needed! IC Air-Tight rated luminaires extend up to 90° from surface and rotate 350°, illuminating any direction needed. M-Wave downlights appear as puck lights, up to 1-3/8" off the surface when flush and delivering over 1250 lumens in dedicated CCT (2700K or 3000K).



NMW-2
2" M-Wave



NMW-4
4" M-Wave





Scan for info.



M-CURVE SERIES

Adjustable Can-less Downlights
 Extends up to 80° & 360° Rotation
 Selectable CCT (27K/30K/35K/40K/50K)

M-Curve can-less adjustable downlights are a unique and functional. Extending 80° while never exposing the ceiling aperture. IC Air-Tight rated luminaires extend up to **80° and rotate 360°**, illuminating any direction needed. Delivering up to 1200 lumens and with a Selectable CCT (2700K / 3000K / 3500K / 4000K / 5000K) switch built-in to the remote junction box.

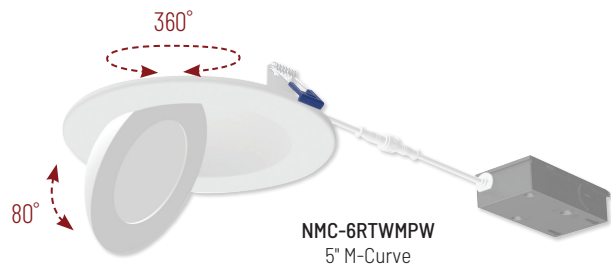


NMC-4RTWMPW
4\"/>



Selectable CCT

Five position sliding switch
 27K / 30K / 35K / 40K / 50K



NMC-6RTWMPW
5\"/>



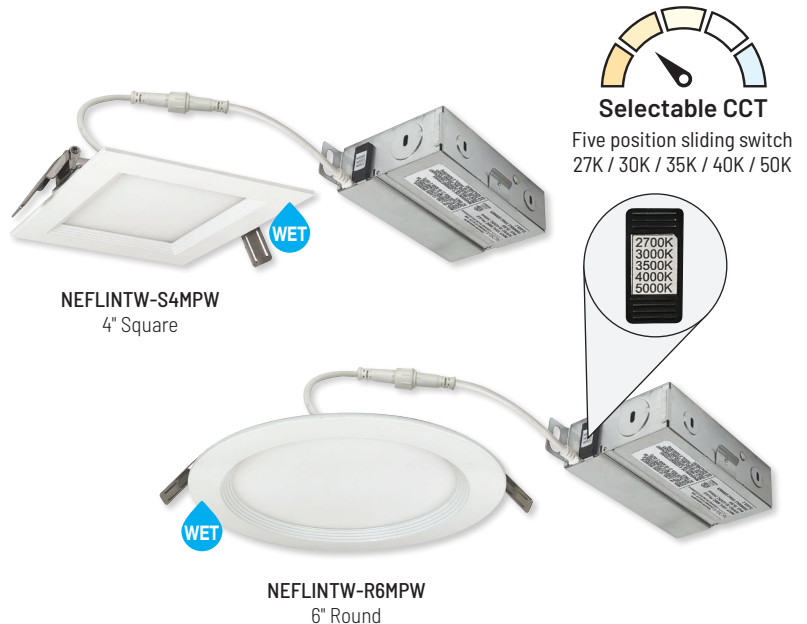
Scan for info.



FLIN

4" and 6" Can-less Wafer Downlights
 Round or Square Aperture
 Selectable CCT (27K/30K/35K/40K/50K)

FLIN thin recessed downlights offer **quick, economical recessed IC Air-Tight LED lighting** for remodel or new construction applications. Simply cut the hole, wire the junction box, and insert FLIN using the spring coiled pressure clips which secure it tightly to the ceiling. **No housing is required!** FLIN is now available in **120-277V input** and produces up to **1300 lumens** with a **Selectable CCT switch (27K/30K/35K/40K/50K)**. The regressed lens with sharp baffle cuts reduces aperture brightness. FLIN series requires **less than 2"** ceiling clearance. A new construction frame-in plate and oversize ring available.





NFLAT-R4TWMPW
4" FLAT



Selectable CCT

Five position sliding switch
27K / 30K / 35K / 40K / 50K



Scan for info.

1/2" depth



NFLAT-R6TWMPW
6" FLAT

FLAT

4" and 6" Can-less Wafer Downlights
Selectable CCT (27K/30K/35K/40K/50K)

FLAT wafer can-less downlights feature a **non-metallic trim** for corrosive environments. IC Air-Tight rated luminaires are similar to our existing FLIN series, where **no housing is required** and **only 1/2" height**. Delivering up to **1100 lumens** with a **Selectable CCT** switch (2700K / 3000K / 3500K / 4000K / 5000K) switch built-in to the remote junction box.



NFLINA-R4TWMPW
4" FLIN Adjustable



Selectable CCT

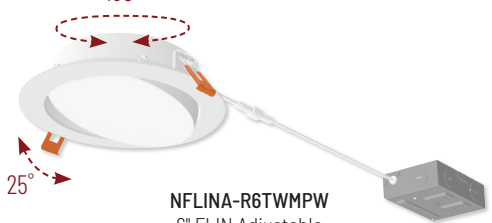
Five position sliding switch
27K / 30K / 35K / 40K / 50K



Scan for info.

180°

25°



NFLINA-R6TWMPW
6" FLIN Adjustable

FLIN ADJUSTABLE

4" and 6" Can-less Wafer Downlights
25° Adjustment & 180° Rotation
Selectable CCT (27K/30K/35K/40K/50K)

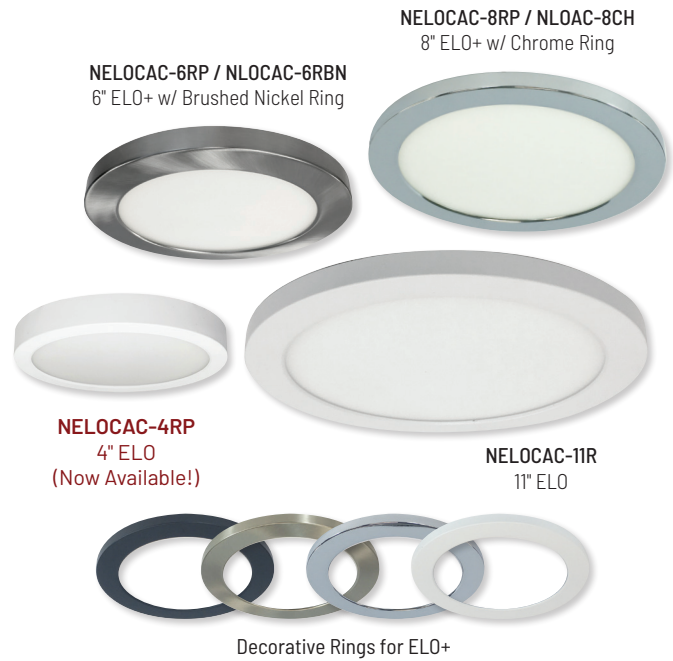
FLIN Adjustable can-less downlights **adjust up to 25°** with the same appearance as FLAT downlights. IC Air-Tight rated luminaires require **no housing** and **rated for wet locations**. Delivering up to **1100 lumens** with a **Selectable CCT** switch (2700K / 3000K / 3500K / 4000K / 5000K) switch built-in to the remote junction box.



ELO & ELO+

4", 6", 8" and 11" Surface Mount or Retrofit
Up to 1700 lumens · 2700K to 5000K

ELO series is a thin 1/2" surface mount luminaire designed to surface mount over a standard or fire rated junction box, or retrofit existing 5" or 6" recessed housings. This economical series is available in **two styles: ELO (80 CRI) or ELO+ (90 CRI); four sizes: 4" (650lm), 6" (1080lm), 8" (1100lm) and 11" (1700lm).** ELO luminaires are available in dedicated CCT options: **2700K, 3000K, 3500K, 4000K, 5000K in a white finish.** Dimmable with Triac or ELV dimmers, luminaires are a practical and cost effective solution for multi-family, residential and light commercial applications.



16" ELO

Surface or Pendant Mounted
2100 lumens · 2700K, 3000K or 4000K
Now available in stem mount and black finish!

16" ELO luminaire is only 1" thick and can be **surface mounted** over standard junction boxes or **pendant mounted** with an optional accessory. Luminaires **deliver 2100 lumens in 2700K, 3000K or 4000K @ 90+ CRI.** Efficient luminaire delivers 100 lumens per watt, meeting the stringent energy requirements of **ENERGY STAR** and California **JA-2019 Title 24** requirements.



wELO

8" and 11" Surface Mount
1079lm or 1588lm · 2700K, 3000K or 4000K
Wet Location rated!

wELO surface mount luminaires are 1" thick with a regressed lens. Wet location rated luminaires are designed to surface mount over a standard or fire rated junction box. Available in **8" (1079lm) and 11" (1588lm)** in dedicated CCT options (**2700K, 3000K, or 4000K**) in a **white finish.** An integral 0-10V drivers accept universal input (**120-277V**). Luminaires are a perfect solution for wet location, multi-family, residential and light commercial applications.

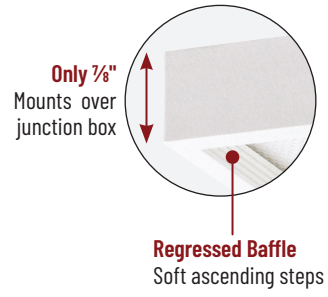




NLOS-R42L
4" Round



NLOS-S42L
4" Square



Scan for info.



SURF

4", 6" and 7" Surface Mount
Up to 1150 lumens
Round or Square Aperture

SURF Edge-Lit Surface Mount is an aesthetically pleasing luminaire that produces even illumination while reducing glare. The specially designed regressed lens greatly reduces aperture brightness and extends less than 7/8" from the ceiling. Series is available in square and round, **2700K, 3000K, 3500K, 4000K and 5000K temperatures** with an architectural elegance for today's specification standards. SURF mounts easily over a standard or fire rated fixture junction boxes.



NLOS-S62L
6" Square



NLOS-R72L
7" Round



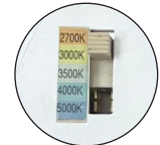
NLOPAC-R4REGT24
4" Regressed



NLOPAC-R4509T24
4" AC Opal



NLOPAC-R6TW
6" AC Opal with
Selectable CCT



Selectable CCT

Five position sliding switch
27K / 30K / 35K / 40K / 50K

Scan for info.



OPAL

4" to 8" Surface Mount or Retrofit
Up to 2150 lumens
Regressed • PIR Motion Sensor • Standard

AC Opal Series LED fixtures are designed to surface mount over a standard junction box. The low 7/8" profile luminaires are available in **4", 6" and 8" sizes from 700lm to 2150lm in three finishes; 4" and 6" regressed style and 7" 1050lm unit with PIR motion sensor in white.** Opal is an excellent energy efficient lighting solution for laundry rooms, closets, pantries, hallways and showers in residential and commercial retrofit or new construction applications.



NLOPAC-R7MS
7" PIR Motion Sensor



NLOPAC-R8T24
8" AC Opal





Scan for info.



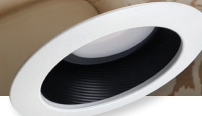
NTM-615
6" Metal Baffle



NTP-614
6" Plastic Baffle



NLR-611
6" LED Reflector
Selectable CCT



NLR-612
6" LED Baffle
Selectable CCT



Selectable CCT

Five position sliding switch
27K / 30K / 35K / 40K / 50K

SLOPED CEILING

6" New Construction and Remodel
2/12 (10°) to 6/12 (26.5°)

Variety of IC air-tight sloped ceiling housings can be adjusted for 2/12 (10°) to 6/12 (26.5°) ceiling pitches. Housings include a medium base socket for lamps or LED luminaires. Sloped LED luminaires include a retrofit adapter for new and existing medium base housings. LED luminaires also include a selectable CCT switch that allows the end user to change the color temperature if desired.



NHIC-926DWQAT
6" Double Wall
Medium Base Housing



NHIC-926QAT
6" Medium Base Housing

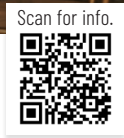
NHIC-926LMRAT
6" LED Dedicated Housing



NHIC-926QAT
6" Medium Base Remodel

NHIC-926LMRAT
6" LED Dedicated Remodel





NTM-616/45
6" Reflector



NTM-617/45
6" Baffle



NLRS-6S11
6" LED Reflector



NLRS-6S12
6" LED Baffle

SUPER SLOPED CEILING

6" New Construction and Remodel
7/12 (30°) to 12/12 (45°)

Super sloped ceilings' pitches range from 7/12 (30°) to 12/12 (45°) and require a housing with greater angle. Variety of IC air-tight sloped ceiling housings are available with a medium base socket or dedicated for LED luminaires only. Super sloped LED luminaires include a retrofit adapter for new and existing medium base housings. LED luminaires also have dedicated CCT options in 2700K, 3000K or 4000K.



NHIC-928QAT
6" Medium Base Housing

NHIC-928LMRAT
6" LED Dedicated Housing



NHRIC-928QAT
6" Medium Base Housing

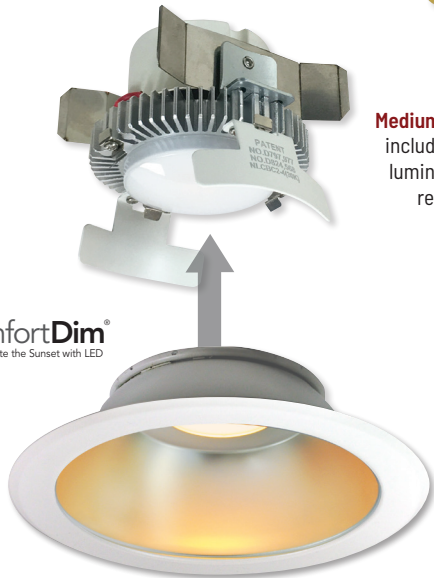
NHRIC-928LMRAT
6" LED Dedicated Housing



Patent Nos. D824,568S; D797977S; D871,644S



Medium Base Socket included with each luminaire for easy retrofitting



NLCBC2-651
6" Reflector



NLCBC2-453
4" Square w/
Round Aperture

NLCBC2-552
5" Baffle



NLCBC2-651
6" Round

Scan for info.



COBALT CLICK RETROFIT

750 or 1000 lumens
Specification Options (0-10V & Emergency)

4", 5" and 6" LED Cobalt luminaires provide **750 or 1000 lumen output** and **rendering 90+ CRI**. Cobalt series integrates the latest from the Signify® COB family of LED arrays, giving bright spectacular light output and low power consumption. The deep set lens provides excellent visual comfort, while the UTM design allows the luminaires to be used in shallow housings. The Cobalt Series is available in square or round apertures, adjustable or wall wash reflectors, 0-10V dimming, emergency back-up and 277V input.

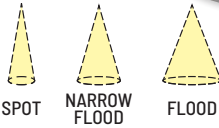


Patent No. D917,090S



Medium Base Socket included with each luminaire for easy retrofitting

Integral Driver
Triac / ELV dimming



Field Changeable Optics
Each retrofit includes spot, narrow flood & flood optics



COB LED technology
2700K, 3000K, 3500K or 4000K



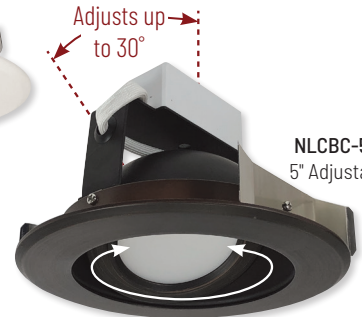
Frosted Lens
comes pre-installed and additional semi-frosted lens included



NLCBC-669
6" Adjustable



NLCBC-469
4" Adjustable



NLCBC-569
5" Adjustable

Adjusts up to 30°
Rotates 358°

Scan for info.



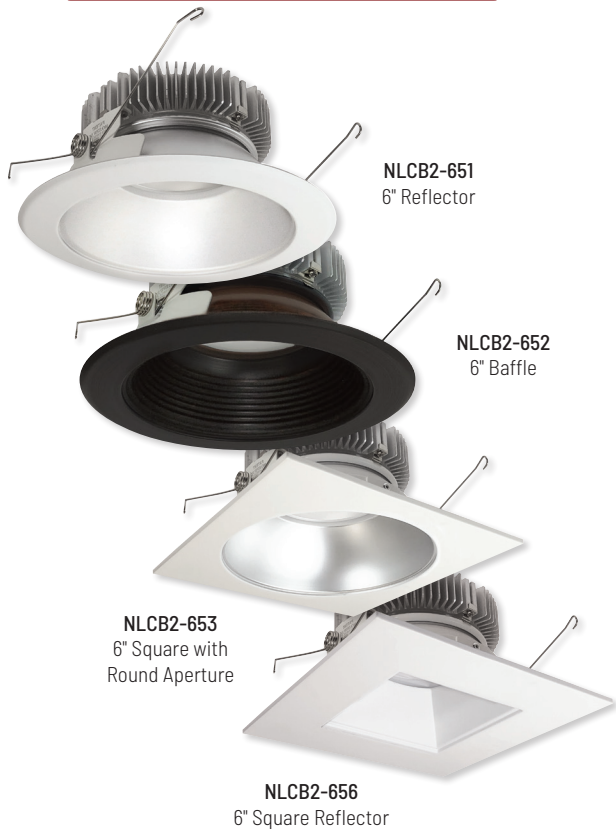
COBALT ADJUSTABLE RETROFIT

4", 5" and 6" Retrofit
1000 or 1200 lumens

4", 5" and 6" Cobalt Adjustable Retrofit features a patent pending design that rotates and adjusts while never exposing an opening or breaking the ceiling plane. The glide mechanism allows for total aiming flexibility while producing up to **1200 lumens at 90+ CRI**. An excellent solution for slope ceilings, luminaires **include field-changeable optics** for spot, narrow flood and flood beam spreads and **optional TIR premium reflectors** available. Choice of seven different finishes that matches the complete family of Cobalt downlights.



Patent Nos. D824,568S; D797977S; D871,644S



6" COBALT HIGH LUMEN

1500 or 2000+ lumen Output
Requires Dedicated Nora Housing

The **6" Cobalt High Lumen** provides the same look and color consistency as the popular Cobalt and Cobalt Click downlights using a Cree COB, but producing an incredible **2000+ or 1500 lumens at 90+ CRI**. The series is offered in a wide variety of click-on trims, including square and round apertures in eight finishes. The Cobalt HL is a **dedicated unit, not retrofit, that requires a Nora new construction or remodel non-IC housing**. Available in 120V/277V, 0-10V dimming and emergency configuration, the Cobalt HL works seamlessly with our Cobalt, Cobalt Click, and Cobalt Shallow families providing a color-consistent and aesthetically identical package.



NLCBC-470
4" Round

2700K 3000K 3500K 4000K

Adjusts up to 75°

COB LED technology
2700K, 3000K, 3500K or 4000K

Field Changeable Optics
Spot & narrow flood optics included



COBALT ELBOW RETROFIT

4" Retrofit / 800 Lumens

One of the most flexible lighting tools on the market, the Cobalt Adjustable Elbow retrofit **rotates 358 degrees** horizontally and **adjusts 75 degrees** vertically. Available in round or square and multiple finishes, the Elbow produces **800 lumens at 90+ CRI** in various CCTs. Each Elbow **includes two field-changeable optics** for spot and narrow flood beam spreads.

Patent Nos. D877,390S; D824,568S; D797977S; D871,644S

Only 2-5/8" tall!



COBALT SHALLOW

Shallow Housing - only 2-5/8" tall!
850 or 1250 lumens
Square and Round Reflectors

Cobalt shallow series allows for installation in over crowded plenums in multi-family or shallow ceiling constructions, while still allowing for access to the driver from below the ceiling. The finished look and deep set optics performs and looks like a standard deep recessed downlight. Available in **850 and 1250 lumens at 90+ CRI** using the latest Cree COB technology, the Cobalt Shallow is the shallowest housing and LED module combination on the market.





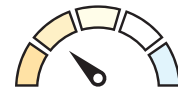
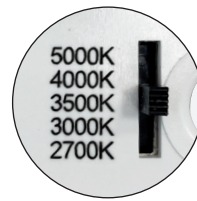
Scan for info.



ONYX RETROFIT

4" Adjustable / Square up to 1000lm
5 1/6" Adjustable / 6" Square up to 1100lm

Onyx Series offers an economical, quality solution to LED Retrofit downlighting. Deep-set optics provide visual comfort in 4", 5 1/6" and 6" apertures. The Onyx produces 90+ CRI for true vibrant color rendition. Square and adjustable styles blend with popular trims and create a uniform ceiling appearance. The 4" produces 700 to 1000 lumens and 5 1/6" and 6" produces 800 to 1100 lumens. Onyx series is compatible with Nora's dedicated LED housings to meet energy rebate requirements, including Chicago Plenum housings, as well as medium base housings by Nora or others.



Selectable CCT

Five position sliding switch
27K / 30K / 35K / 40K / 50K



Medium Base Socket
included with each
luminaire for easy
retrofitting



NOXTW-431BB
4" Reflector



NOXTW-5632WW
5 1/6" Baffle

Scan for info.



ONYX TW RETROFIT

Selectable CCT
4" & 5 1/6" Round / Up to 1100lm

Onyx TW Series is a Tunable White Retrofit Reflector with integral, selectable CCT switch. End users can select the color temperature from 2700K, 3000K, 3500K, 4000K or 5000K and easily adjust with the flick of a switch. Die-cast aluminum construction provides clean sharp edges and is suitable for use with most 4", 5" and 6" recessed housings. Utilizing Onyx reflectors allows for the same appearance from below the ceiling plane. Snap-in reflectors and baffles allow for optional finishes.



Scan for info.



AC ONYX RETROFIT

AC Only – No Driver!
4" & 5 1/6" Round and Square / Up to 1150lm

The sleek AC Onyx requires no driver. Die-cast aluminum construction provides clean sharp edges and is suitable for use with most 4", 5" and 6" recessed housings. AC Onyx is available in 4" or 5 1/6" apertures and produces up to 1150 lumens in 2700K, 3000K, 3500K, 4000K or 5000K at 90+ CRI. Deep regressed optics and round aperture deliver even and glare-free illumination. Utilizing Onyx reflectors allows for the same appearance from below the ceiling plane. Snap-in reflectors and baffles allow for optional finishes. Oversize rings and eyelid accessories are also available.



NOXAC-432
4" Baffle



NOXAC-5631
5 1/6" Reflector



NOXAC-436
4" Square



NOXAC-636
6" Square



Scan for info.



ONYX LOW VOLTAGE

4" 12V Low Voltage Retrofit with Selectable CCT
800 lumens

Onyx Low Voltage Retrofit Series is an economical and quality luminaire compatible with existing, new construction or remodel low voltage housings. 4" downlights produce over 800 lumens and include a Selectable CCT switch to select the color temperature from 2700K / 3000K / 3500K / 4000K / 5000K. An integrated driver converts the voltage from 12V and dimmable with compatible Triac or ELV dimmers



NOXLV-4R1
4" Reflector



Selectable CCT

Five position sliding switch
27K / 30K / 35K / 40K / 50K



NOXLV-4R2
4" Baffle



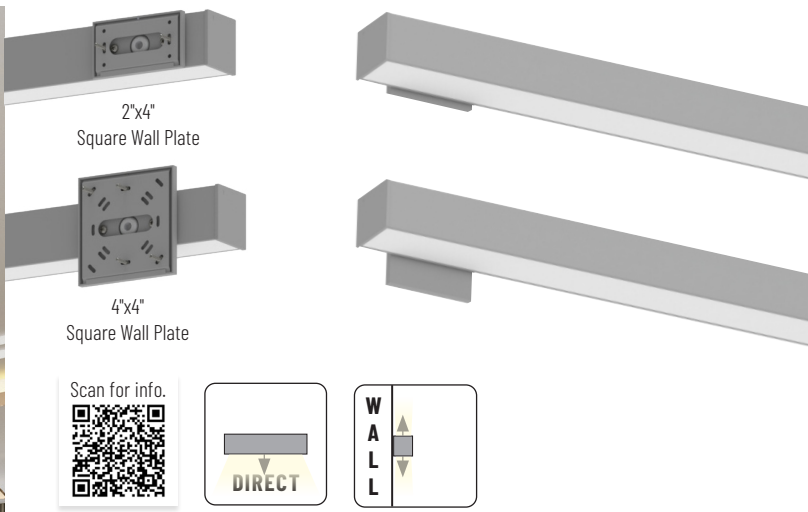
NLIN-210
2' Linear

NLIN-L10
L-Connector

NLIN-X10
X-Connector

NLIN-T10
T-Connector

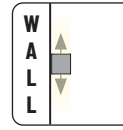
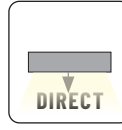
NLIN-810A
8' L-Line Direct
with
NLIN-PCCA
Pendant Kit



2"x4"
Square Wall Plate

4"x4"
Square Wall Plate

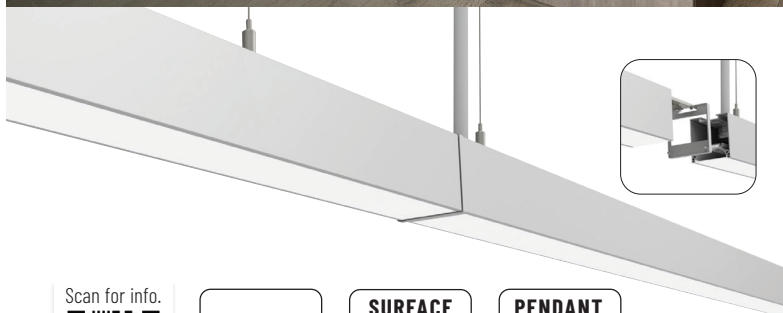
Scan for info.



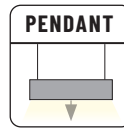
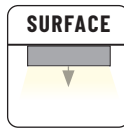
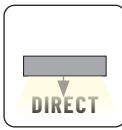
NWLIN

Linear LED Wall Mount
1050 lumens per foot
2' to 8' linear lengths

L-Line LED wall mount luminaires maintain the same appearance as NLIN luminaires. Each luminaire includes a finished flange in white or aluminum finish. Maintaining the same internal components as NLIN, luminaires can be daisy chained up to 80'. Delivering **1050 lumens per foot** in dedicated CCT options (**3000K, 3500K or 4000K**). L-Line is ideal for commercial, retail, healthcare and education applications.



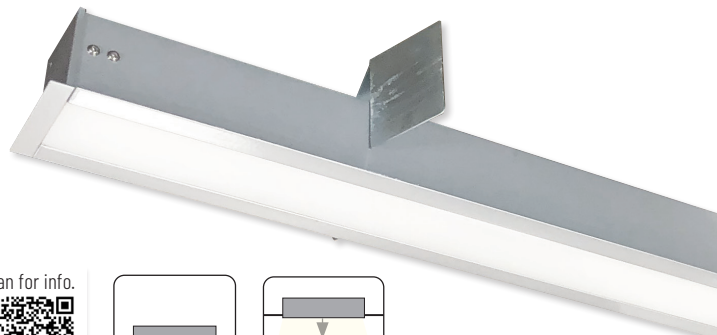
Scan for info.



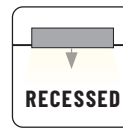
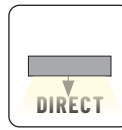
NLIN

Linear LED Direct
1050 lumens per foot
X, L and T Luminous Connectors

L-Line Direct LED linear luminaires offer a clean and modern appearance with a sleek extruded aluminum housing. Symmetrical light distribution will evenly illuminate surfaces with a diffused lens, making the L-Line ideal for commercial, retail, healthcare and education applications. Delivering **1050 lumens per foot** in dedicated CCT options (**3000K, 3500K or 4000K**) in **aluminum finish**. Internal quick connects allow systems to be connected with seamless luminous L, X or T connectors.



Scan for info.



NRLIN

Linear LED Recessed Mount
1050 lumens per foot
2' to 8' linear lengths

L-Line LED recessed luminaires maintain the same appearance as NLIN luminaires. Each luminaire includes a finished flange in white or aluminum finish. Maintaining the same internal components as NLIN, luminaires can be daisy chained up to 80'. Delivering **1050 lumens per foot** in dedicated CCT options (**3000K, 3500K or 4000K**). L-Line is ideal for commercial, retail, healthcare and education applications.





NLUD-4334W
4' L-Line Linear
with
NLUD-4WMW
4' Wall Mount Kit

NLUD-8334W
8' L-Line Linear
with
NLUD-PCCW
Pendant Kit

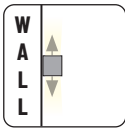
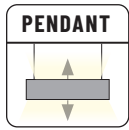
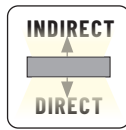


Wall mount kits available in 2' to 8' lengths.

New Options
Occupancy Sensor &
Louver Accessories



Scan for info.

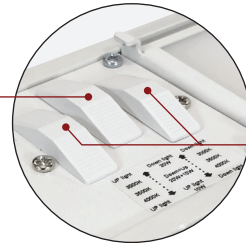
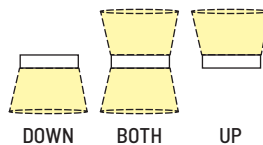


NLUD

Linear LED Indirect / Direct
Selectable Direct & Selectable CCT
Pendant or Wall Mounted

L-Line LED indirect / direct luminaires include three integral switches for direction of light and selectable color temperature per direction. Sleek extruded housing with symmetrical light distribution will evenly illuminate surfaces with a diffused lens. These pendant or wall mounted fixtures are ideal for commercial, retail, healthcare and education applications. Internal quick connects allow systems to be connected with seamless luminous L, X or T connectors

Selectable Direction
Up / Down / Both



Selectable CCT
Three position sliding switch
3000K / 3500K / 4000K
Per Direction



NLUD-L334
L-Connector



NLUD-T334
T-Connector



NLUD-X334
X-Connector



NRLM-8C
8" Shade
Cable Mounted

NRLM-10ST
10" Shade
Stem Mounted

Scan for info.



RLM SHADES

8", 10" or 16" · 1200lm to 3800lm
Now available with Stem Mount option

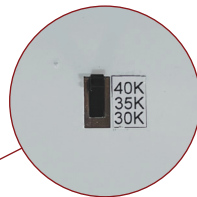
Aluminum spun shades with built-in dimmable drives and LED COB technology provide excellent general illumination. The optics are set deep inside the shades for visual comfort while producing **up to 2200 lumen (8"), 3000 lumen (10") or 3800 lumens (16") at 90+ CRI**. Shades' exterior finishes include: white, black and gun metal with reflective white interior bowls. Color temperature include **3000K, 3500K and 4000K**, the shades are a perfect solution for retail, commercial, and hospitality applications.



NRLM-16C
16" Shade
Cable Mounted



Motion Sensor Option
Now Available



Selectable CCT
Three position switch
3000K / 3500K / 4000K

Scan for info.



Optional Emergency
Integral Test Switch
and Indicator Light

NLSTR
Strip Light

STRIP LIGHT

4' and 8' Linear with Selectable CCT
3300lm (4') or 8000lm (8') · Emergency & Motion Sensor options

Industrial LED Tunable Strip Light includes an integral CCT switch to change the color temperature at any time! Ideal for commercial, residential, industrial and retail applications. Luminaire's lens is designed to evenly spread the light in a complete 120° beam pattern. The smooth lens makes for easy maintenance and no diode image. NLSTR can be used in storage or utility buildings, coves, display cases, workshops and garages for task and general lighting.





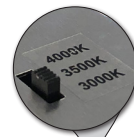
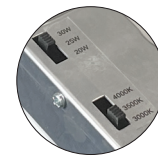
Scan for info.



BACKLIT PANELS

1' x 4', 2' x 2' and 2' x 4' Configurations
 Selectable CCT and Selectable Lumens
 2600 to 5700 lumens

LED Panels produce uniform, glare-free illumination in offices, conference rooms, libraries and other task areas where general illumination is desired. Backlit panels include a **field selectable CCT switch** which allows the luminaire to be switched (3000K / 3500K / 4000K) or **dedicated 5000K**. LED Panels are available in three sizes: **2' x 2'**, **1' x 4'** and **2' x 4'**, which can be installed in most grid ceilings. The panels are **universal input** and come in a range of **selectable or dedicated lumens**. Optional mounting accessories are available for surface mounting, recessed mounting into hard ceilings or pendant mounting. Emergency options are also available, along with **new surface mount kit for emergency**.



Motion Sensor Option
 Now Available



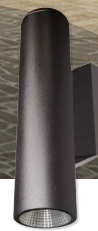
WALL MOUNTED CYLINDER

Selectable Direction (Up / Down / Both)
 Selectable CCT (3000K / 4000K / 5000K)

Architectural grade ADA compliant up-and-down wall mount cylinder with two dedicated COB LEDs mounted in the up and down position. Each cylinder includes two integral switches to change the direction of light and color temperature after installation. IP65 and wet location rated for most indoor and outdoor applications.



NYUD-3L134B
Black Finish



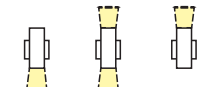
NYUD-3L134BZ
Bronze Finish



NYUD-3L134MPW
Matte Powder White Finish



Selectable CCT
 Three position switch
 3000K / 4000K / 5000K



Direction of Light
 Down / Both / Up



Scan for info.



iLENE™ MINI CYLINDERS

Miniature 2", 3" or 5" Cylinders
1000 to 2000 lumens
Surface, Stem or Cable Mounted

iLENE LED Mini Cylinders consists of three sizes, multiple finishes and is offered in a surface, stem or cable mounted. Using Cree COB or Comfort Dim technology the cylinders produce 1000lm (2"), 1500lm (3") or 2000lm (5"). Each iLENE cylinder includes three field changeable optics for maximum design control. Optional accessories can further customize the fixtures.



Scan for info.



Sloped Canopy
allows for all wires to
be enclosed in stem

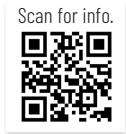
6" CYLINDERS

Surface, Stem, Cable or Wall Mounted
Up to 3500 lumens • Dedicated or Selectable CCT
New sloped stem assembly!

6" Cylinders are available in three different series: Sapphire II (up to 3500lm w/ specifiable beam spreads), Cobalt (up to 1000lm) and Medium Base Incandescent/LED. Each cylinder has four different mounting types for any application; Cable mounted includes 8' cable, Wall mount is Wet Location rated, Surface mounted or Stem mounted with new sloped canopy.

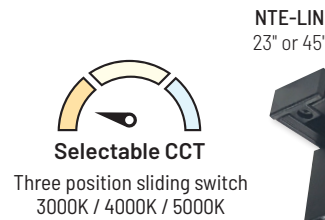


T-LINE TRACK

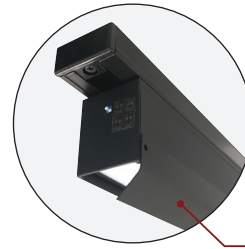


Linear Tunable White (Selectable CCT)
23" / 1600lm or 45" / 3200lm
Field Changeable Lenses & Accessories

T-Line is a unique LED linear track head with field changeable lenses to change the light distribution. Track heads are available in two lengths and lumen outputs; 1600lm (2') or 3200lm (4') for general illumination and combine it with directional track heads for a perfect solution to retailing or retrofitting existing track with energy efficient LED light. T-Line features a selectable CCT switch using dip switches in the end of each track head, which can be set at 3000K, 3500K or 4000K. T-Line comes standard with a frosted symmetrical lens, asymmetric lenses and visor are available for aisle lighting or directional lighting.



NTE-LIN
23" or 45"



Visor
Use with asymmetric lens for wall washing

JASON TRACK



Round or Square
1400lm, 2200lm or 2800lm

Jason LED Track heads features die-cast aluminum construction with an integral driver in a clean simple flat back cylinder style. The high lumen track head is available in **3000K, 3500K or 4000K @ 80 or 90 CRI**. Luminaires are specified in **spot, narrow flood or flood beam spread in three lumen outputs**. Jason Track Heads include a clear glass and accept a variety of accessories ranging from **barndoors, snoot, shield or louver**. Making this series ideal for retail and commercial applications where the specifier is looking for a minimal form and design. Jason's three lumen outputs use the same housing for a uniform look.



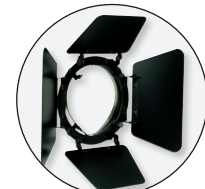
NTE-855
Round



NTE-854
Square



Specifiable Beam Spreads
Spot, Narrow Flood and Flood



Barn Door
and other accessories
also available

JASON PS TRACK



Selectable CCT (3000K / 3500K / 4000K)
1450lm

Jason PS LED track heads feature an integral color temperature switch, allowing the end user to change the color temperature. Luminaire delivers **1450 lumens** in three color temperatures (**3000K / 3500K / 4000K**) @ **90 CRI**. Track heads can be specified in **spot, narrow flood or flood beam spread** to create the ideal cone of light per application. Jason track heads include a clear glass and accept a variety of accessories ranging from **barndoors, snoot, shield or louver**. Making this series ideal for residential to commercial applications to compliment any space.



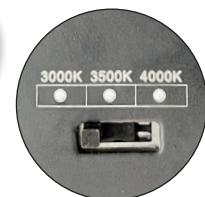
NTE-856
1450lm



Specifiable Beam Spreads
Spot, Narrow Flood and Flood



Three position sliding switch
3000K / 4000K / 5000K



MAC TRACK



AC LED – No Driver!
800lm to 1250lm • Dedicated CCT or Comfort Dim
Field Changeable Optics

MAC LED Track heads have an eclectic style to fit any decor. Luminaire features **COB LED technology** allowing for better optic control and include two **field changeable optics (spot or flood)**. MAC delivers **800 lumens** and MAC XL delivers **1250 lumens** in **2700K, 3000K, 3500K or 4000K** at 90+ CRI. **Comfort Dim (warm dimming)** option now available for MAC XL. AC LED allows for no driver to maintain a small appearance in **white, black or silver** finishes. Track adapters can be converted to J and L style adapters.



NTE-870
MAC

NTE-875
MAC XL



SPOT



FLOOD

Field Changeable Optics
Spot and Flood included



Warm Dim Option
Certified to requirements of
Title 24 JA8-2019



MAY TRACK



AC LED – No Driver!
850lm • Dedicated CCT or Comfort Dim

May LED Track heads offer clean, modern style for any application. Track heads feature AC LEDs that require no driver, allowing for minimalist appearance. May luminaires deliver up to **850 lumens** at **2700K, 3000K, 3500K or 4000K** @ 90 CRI. **Comfort Dim (warm dimming)** option warms the color temperature from **2900K to 1800K** as the fixture is dimmed. Track heads include a **narrow flood optic** and available in **black or white** finishes. May Track heads are certified to the high efficacy requirements of California Title 24 JA8-2019. Track adapters can be converted to J and L style adapters.



NTE-860
800lm



Warm Dim Option
Color temperature warms as
luminaire is dimmed

MAX TRACK



1000lm to 3650lm
Dedicated CCT
Three Sizes • Premium TIR optics

MAX LED Track heads features **COB LED technology** allowing for better optic control and **premium TIR optics (spot, narrow flood or flood)**. Track heads are available in three sizes and lumen outputs (**1000 to 3650 lumens**) in **2700K, 3000K or 4000K** at 90+ CRI. Cylindrical design allows is ideal for higher ceilings and commercial applications in **white, black or silver** finishes. Track adapters can be converted to J and L style adapters.



NTE-866
MAX XL

NTE-865
MAX

NTE-864
MAX Mini



SPOT



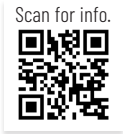
NARROW
FLOOD



FLOOD

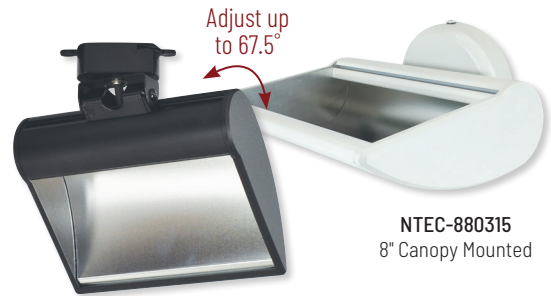
Specifiable Beam Spreads
Spot, Narrow Flood and Flood
(Note: NTE-864 includes narrow flood only)

DIPPER WALL WASH / INDIRECT



Track Mounted or Monopoint
8" / 1000lm or 12" / 2300lm

Dipper LED Track head spreads deliver an indirect light output in **two lengths** and lumen outputs. Each track head gives an even bright wash of light with no source brightness. The indirect LED uses a polished reflector to produce either **1000 lumens (8")** or **2300 lumens (12")** at **3000K, 3500K or 4000K**. Dipper luminaires are **also available as monopoint** without the need for a track system and **wall mounted** to create discrete, indirect up light. Dipper is excellent for **wall washing or indirect** light in retail, hospitality, office and commercial applications.



NTEC-880315
8" Canopy Mounted



NTE-880315
8" Track Mounted

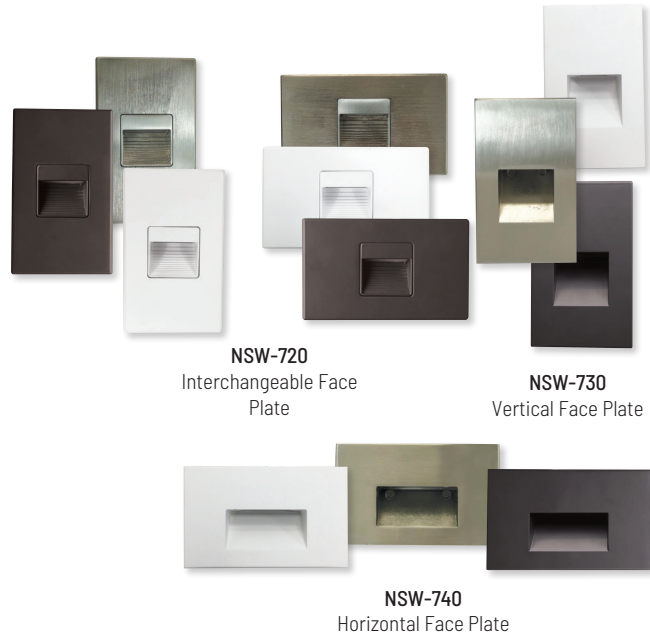
NTE-880330
12" Track Mounted

ARI STEP LIGHTS



Vertical, Horizontal or Interchangeable Face Plate
Now available in Deep Bronze!

The aesthetically pleasing 2.5W or 5W ARI LED step light directs light onto the surface below while shielding the LED source from view. Ari face plates include **vertical, horizontal or interchangeable face plate**, in **matte powder white, brushed nickel or deep bronze finish**. Available in **3000K or 4000K @ 90 CRI**. Long lasting, low maintenance, energy efficient LED step lights provide illumination for safety around steps, balcony areas, or walkways while saving over 80% in running costs when compared to 10W incandescent step lights.



NSW-720
Interchangeable Face
Plate

NSW-730
Vertical Face Plate

NSW-740
Horizontal Face Plate



JOSH LED PUCK



12V / 24V LED Puck Light
Up to 300 lumens / 4.5W
Now available in Adjustable!

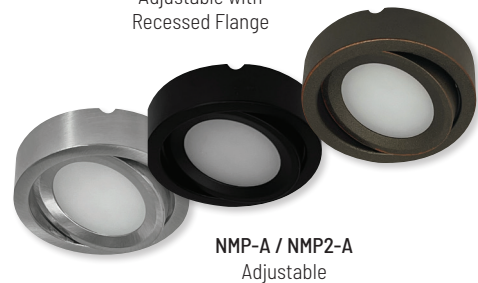
Josh LED puck lights can be **surface or recessed mounted** with an included finished collar. 12V **Dimmable** LED luminaires produces up to **300 lumens with 2700K, 3000K, 3500K or 4000K**. Each luminaire includes a frosted lens to eliminate hot spots generated by direct view LEDs, which reflects on surfaces. Josh is available in **black, bronze, brushed nickel or white** finishes.



NMP-LED / NMP2-LED
Fixed



NMP-A / NMP-AREC
Adjustable with
Recessed Flange



NMP-A / NMP2-A
Adjustable





Selectable CCT

Three position sliding switch
3000K / 4000K / 5000K

Scan for info.



Adjust up
to 90°

NUDTW-98



BRAVO FROST TW

120V Tunable White (Selectable CCT)
850 lumens per foot

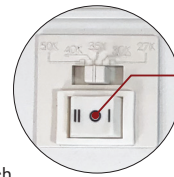
Low profile Bravo FROST TW (Tunable White) LED linear luminaires offer a **diode image-free** solution for residential and commercial use. Less than 1" in depth, Bravo FROST TW fixtures can be installed under cabinets, within shelves/displays and architectural coves. Bravo FROST TW offers **850 lumens / 10W per foot** with a **selectable CCT switch** which can be set at **3000K, 3500K or 4000K**. Each fixture includes adjustable mounting brackets that adjust the luminaire up to 90° and **lengths range from 12" to 32"**. An encapsulated 120V dimmable LED driver in each unit allows extended runs and easier installation with **3-wire system**.



Selectable CCT

Five position sliding switch
27K / 30K / 35K / 40K / 50K

Scan for info.



3 Position Switch
Selectable Lumen Output
and turns fixture On / Off



NUDTW-88

LEDUR TW

120V LED Undercabinet
Selectable Lumen Output / Color Temperature
5 CCT options and 2 Outputs in One Fixture!

LEDUR TW allows the end user to **select between five CCT options (27K / 30K / 35K / 40K / 50K) and two outputs (regular or high output) all in one luminaire!** Each undercabinet fixture includes two switches to control each option separately. **Lengths range from 11" to 42" in bronze or white finish.** Edge-lit LEDs **eliminates the diode image** and provides uniform reflectance of light without the hot spots generated by direct view mounted LEDs, which reflects in granite and other mirror-finish counter tops. LEDUR provides smooth, uniform light across the counter surface. Utilizing the same construction and easy installation with captive screws under removable cap. Completely **dimmable and linkable**, the LEDUR is a perfect solution for energy efficient lighting.

NULS-LED

120V Dimmable LED Undercabinet
525 lumens per foot

Scan for info.



NULS LED undercabinet produces over **525 lumens per foot** while consuming only **5W** and is available in **2700K, 3000K or 4000K**. 120V input voltage **eliminates the need for any drivers** and wattage concerns. Luminaires can be **connected together seamlessly** or with cable accessories. Each system can be **hardwired into a junction box and dimmed**. Ideal for under cabinet, in cabinet, cove, display, general commercial, retail and residential lighting applications.



NULS-LED

Scan for info.



SMALL SIZE
9-1/2" X 2-1/8"

NATLED-5075HW

ELV DRIVERS

12V or 24V output · 35W to 75W

Constant voltage drivers are available for **12V or 24V** under cabinet and linear systems. **Dimmable with electronic low voltage or Triac dimmers**. Each driver includes a **10' power line connector** and enclosure for cULus listing.

Scan for info.



NEXUS®

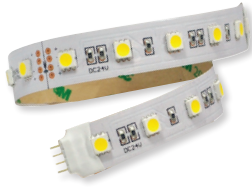
LED Driver and Dimmer All-In-One
120V input · 12V or 24V output



NATL-SWEX

Nora is proud to present the next generation of LED dimming with NEXUS, an all-in-one LED driver and dimmer. NEXUS eliminates compatibility issues by combining an **LED dimmer switch and power supply in one integrated unit**. NEXUS mounts in a standard in-wall switch box and fits a standard Decora switch plate. The unit is **available in 12V or 24V 60W and 24V 100W**, provides 100% to 5% dimming, converts 120V AC to DC low voltage. A white face plate is included, and an optional face plate kit with black, brown and almond plates are available. NEXUS is compatible with Nora LED Tape, LED Lightbar, LED Puck and LED Flex Lights.

Scan for info.



11 TYPES OF TAPE LIGHT

Nora's expanding LED tape lights includes: **120V IP65, COB, Comfort Dim, Color Tuning CCT, RGBW, Side-Lit, High Output** and more. Additional dimmable electronic constant voltage drivers complement our **12V and 24V systems.**

- 1. IP65 RATED**
NUTP13 SERIES 120V · CUSTOM LENGTHS OR 150' ROLL
330 LUMENS / 3.6W PER FOOT
- 2. COB HIGH OUTPUT**
NUTP14 SERIES 24V · 16.4' ROLL ONLY
450 LUMENS / 4.5W PER FOOT
- 3. COMFORT DIM**
NUTP12 SERIES 24V · 16' ROLL ONLY
170 LUMENS / 2.7W PER FOOT
- 4. STANDARD (SILICONE ENCAPSULATED)**
NUTP1 SERIES 24V · NUTP4 SERIES 12V
70 LUMENS / 1.5W PER FOOT
- 5. STANDARD (NON-ENCAPSULATED)**
NUTP7 SERIES 24V · 70 LUMENS / 1.5W PER FOOT
- 6. SIDE-LIT**
NUTP9 SERIES 24V · 70 LUMENS / 1.5W PER FOOT
- 7. HY-BRITE**
NUTP5 SERIES 24V · 200 LUMENS / 2.7W PER FOOT
- 8. HIGH OUTPUT**
NUTP8 SERIES 24V · 350 LUMENS / 4.1W PER FOOT
- 9. RGB COLOR CHANGING**
NUTP3 SERIES 24V · NUTP6 SERIES 12V
- 10. RGBW COLOR CHANGING + WHITE**
NUTP11 SERIES 24V · SEPARATE 30K DIODE
- 11. CCT COLOR TUNING**
NUTP10 SERIES 24V · 2500K TO 4500K

Scan for info.



120V IP65 TAPE LIGHT

Hardwired or Cord & Plug
330 lumens per foot

IP65 rated LED Tape Light is perfect solution for indoor or outdoor applications without the need for LED drivers. Producing **330 lumens per foot** at **2700K, 3000K or 4000K @ 90+ CRI.** Tape is specified per length and factory installed with cord and plug or hardwired with TRIAC dimming. 120V input voltage **eliminates the need for any drivers** and wattage concerns.



NUTP13

HIGH OUTPUT COB TAPE LIGHT

24V input · 16.4' Roll
450 lumens per foot

COB LED Tape Light creates an uniform seamless line of light, without the need for additional diffused covers or accessories. Producing over **450 lumens per foot** at **2700K, 3000K, 3500K or 4000K @ 90+ CRI.** Tape light is a perfect solution for low clearance or reflective surfaces to eliminate all glare or dotting.

Scan for info.



NUTP14

CONTINUOUS ROLLS

LED Tape Light with Flip Connectors

100' or 20' spools of continuous LED tape are available in:

- **Standard Damp Label - NUTP71**
1.5W / 80lm per foot
- **Hy-Brite Damp Label - NUTP51**
2.7W / 210lm per foot
- **High Output Damp Label - NUTP81**
4.1W / 310lm per foot

Scan for info.



Flip Connectors



NEW FINISHES



ALUMINUM CHANNELS

LED Tape Light Channels

Nora has six configurations of Aluminum Channels for the LED Tape light. The channels can be used to hold the tape in visible applications or can be used to hide or conceal the tape in other applications. Offered in 4" shallow and deep sizes, **three finishes**, with or without wings the channels are field cuttable. The unique "J" shape can be used to conceal tape in an under cabinet, book case or framing application. The "J" can even create an instant cove for accent lighting. Use the deep channel with wings to mount in a cabinet or wall to create visual interest or a small, slim line of usable light. Channels without wings are now available in black and white finishes.



LED Tape Light
Iolite LED Downlights



LED Exit Sign

Scan for info.



NE-700LEDRC

DUAL HEAD

LED Emergency Light w/Remote Capability

Mini profile LED emergency light with remote capability and self diagnostics. Two adjustable 100lm heads include an extra 3.6V battery for 3W remote capabilities. Available in black or white.

Scan for info.



NE-612LED

COMPACT DUAL HEAD

LED Emergency Light

Available in standard, remote, remote HO styles and self diagnostic styles. ABS housing with UL 5VA flame rating. Quick snap together design for quick installation and matching remote heads are available in black or white.



NX-617

NEX-720

NE-970

Scan for info.



WET LOCATION

Exit & Emergency

Wet Location LED exit and emergency lights include self diagnostic tests with notification of any failures or malfunctions. Each exit sign includes an optional second face. Long lasting LED sources without maintenance for egress lighting where splashing, non-corrosive liquids and dripping may occur.

Scan for info.



NE-921LED

OUTDOOR EMERGENCY

General lighting with Photosensor

Outdoor emergency light with dual functions (general illumination and emergency lighting). During normal operation, the luminaire will operate with integral photosensor delivering 1250 lumens. During emergency operation, an internal battery will operate the luminaire for 90 minutes, delivering 400 lumens for egress illumination.



NORA LIGHTING, INC.
6505 Gayhart St.
Commerce, CA 90040
TEL 323.767.2600
FAX 323.722.3677
www.NoraLighting.com

DOMESTIC FACILITIES:
Atlanta, GA
Cincinnati, OH
Dallas, TX
Detroit, MI
Edison, NJ
Los Angeles, CA
Louisville, KY
Minneapolis, MN
Nashville, TN

INTERNATIONAL SALES:
6505 Gayhart St.
Commerce, CA 90040
TEL 323.767.2600
FAX 323.722.3677

The products shown in this catalog are covered by USA and International patents. Specifications subject to change without notice.

© Copyright 2023 Nora Lighting, Inc. All rights reserved

6M ML-NPRD0523