

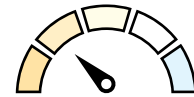
# 6" SLOPED RETROFIT

Ceiling pitches from 1/12 to 6/12  
Selectable CCT • 25° adjustment

Retrofit existing sloped ceiling recessed housings with two trim options and a selectable color temperature switch built-in. 6" downlights produce up to 1200 lumens in five color temperatures. Trim options include a reflector or baffle in black or white finish for new construction or remodel housings.

## FEATURES

- Retrofit existing 6" new construction or remodel housings
- IC rated and dimmable with Triac or ELV dimmers
- Reflector and baffle trims with black or white finishes
- Delivering up to 1200 lumens / 15W
- cULus Listed for Damp Locations
- ENERGY STAR and Title 24 certified



**Selectable CCT**

Five position sliding switch  
27K / 30K / 35K / 40K / 50K



**NLRS-611TWB**  
6" Slope Reflector  
Black / White

**NLRS-611TWW**  
6" Slope Reflector  
White / White



**NLRS-611TWB**  
6" Slope Reflector  
Black / White

**NLRS-611TWW**  
6" Slope Reflector  
White / White

### SLOPED CEILING TRIMS

DESCRIPTION	CCT	FINISH
<a href="#">NLRS-611L1</a> 6" Sloped LED Reflector	<b>TW</b> Selectable CCT (27K / 30K / 35K / 40K / 50K)	<b>B</b> Black / White
<a href="#">NLRS-612L1</a> 6" Sloped LED Baffle		<b>W</b> White / White

Ex: **NLRS-611L1TWW** = 6" Sloped LED Retrofit Reflector, Selectable CCT, White / White

### SLOPED CEILING HOUSINGS

DESCRIPTION
<a href="#">NHIC-926DWQAT</a> 6" Sloped IC Air-Tight Double Wall Line Voltage New Construction
<a href="#">NHIC-926QAT</a> 6" Sloped IC Air-Tight Line Voltage New Construction
<a href="#">NHRIC-926QAT</a> 6" Sloped IC Air-Tight Line Voltage Remodel

Ex: **NHIC-926QAT** = 6" Sloped IC Air-Tight Line Voltage New Construction

