

SLIM

4" LED Surface Mount / Retrofit

Delivering over 800 lumens

Slim LED surface mount luminaires easily install over 4" octagonal junction boxes. Alternatively an optional retrofit kit is also included to install over 4" recessed housings. **Luminaires produce over 800 lumens** and include a selectable CCT switch to **change the color temperature from 2700K / 3000K / 3500K / 4000K / 5000K.**

FEATURES

- 4" round trim comes standard with matte powder white finish
- Delivering over 800 lumens!
- Fits standard 4" octagonal junction boxes
- Retrofit kit included for 4" housings
- Five color temperatures in each fixture!
(2700K / 3000K / 3500K / 4000K / 5000K)
- 120V input with Triac or ELV dimming
- cULus listed and classified for indoor wet locations
- ENERGY STAR certified
- Certified to the high efficacy requirements of California Title 24 JA8-2022



SLIM LED SURFACE MOUNT

DESCRIPTION

NSLIM-4RLITWMPW 4" SLIM, Matte Powder White finish

OPTIONAL TRIMS

DESCRIPTION

NSLIM-4RDTB Round Face Plate, Black Finish
NSLIM-4RDTS Round Face Plate, Silver Finish

Surface Mount
over 4" octagonal
junction box



Selectable CCT
Five position switch
27K / 30K / 35K / 40K / 50K

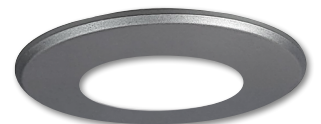


NSLIM-4RLITWMPW
4" Slim LED luminaire

Retrofit
over 4" recessed
housings



NSLIM-4RDTB
Black Ring



NSLIM-4RDTS
Silver Ring

