

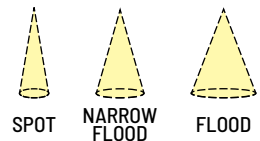
PEARL 12V RETROFIT

4", 5" & 6" LED Retrofit
Delivering up to 1200 lumens

Pearl low voltage LED retrofit series is cULus classified for use in existing IC or non-IC housings manufactured by Nora and others. Retrofit luminaires produce up to 1200 lumens with die-cast round and square reflectors and field changeable optics.

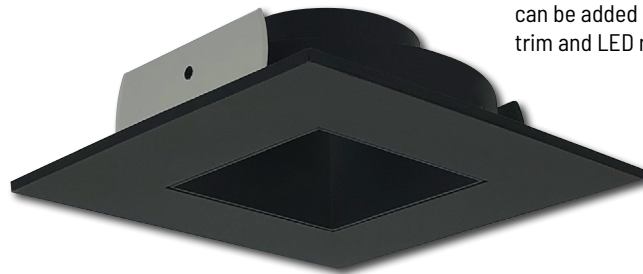
FEATURES

- Up to 1200lm LED output (700lm with Comfort Dim technology) @ 11W
- 2700K, 3000K, 3500K, 4000K or Comfort Dim
- Easily replace old 12V MR16 trims
- COB LED or Comfort Dim Technology
- Field changeable optics included (Spot, Narrow Flood and Flood - installed)
- Compatible with Magnetic or Electronic Transformers
- Triac or ELV dimming
- Compatible with shallow housings and most IC and non-IC housings by Nora and others
- Includes GU5.3 socket adapter for easy retrofitting
- cULus classified for wet locations (adjustable trims are damp location)
- 5-Year Limited Warranty
- California Title 24 JA8-2022 compliant



Field Changeable Optics
Each module includes spot, narrow flood and flood optics

Optional Accessories
can be added anytime between trim and LED module

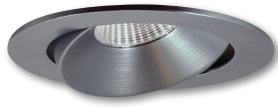


PEARL 12V LED RETROFIT

APERTURE / SHAPE	TRIM TYPE	CCT	FINISH (not all finishes available on all trims)
NPRLV-4R 4" Round NPRLV-4S 4" Square	C Adjustable Cone SH	27X 2700K	BB Black / Black Flange
	G Adjustable Gimbal SH	30X 3000K	BMPW Black / Matte Powder White Flange
	NB Non-Adjustable Bullnose WET	35X 3500K	BW Black / White Flange
	NDC Non-Adjustable Reflector w/Round Aperture WET	40X 4000K	BZ Bronze / Bronze Flange
	PH Non-Adjustable Pinhole WET	CDX Comfort Dim (Warm Dim)	CMPW Specular Clear / Matte Powder White Flange
	PHA Adjustable Pinhole		CHMPW Champagne Haze / Matte Powder White Flange
	SL Adjustable Slot Aperture		HW Haze / White Flange
	NDSQ Non-Adjustable Reflector w/Square Aperture WET		HZMPW Haze / Matte Powder White Flange
NPRLV-56R 5 7/8" Round	NDC Non-Adjustable Reflector w/Round Aperture WET		MPW Matte Powder White / Matte Powder White Flange
			NN Natural Metal / Nat. Metal Flange
			WW White / White Flange

Example: **NPRLV-4RC30XWW** - 4" Pearl 12V LED Round Adjustable Cone Retrofit, 3000K, White with White Flange

4", 5" & 6" PEARL LOW VOLTAGE LED RETROFIT



NPRLV-4RC

SH 4" Round Adjustable Cone Regress
BB, BW, BZ, CMPW, HW, HZMPW,
MPW, NN, WW
10°-35° Adjustable (determined by housing)



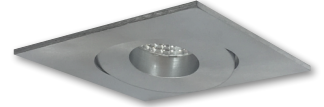
NPRLV-4SC

SH 4" Square Adjustable Cone Regress
BB, BW, BZ, CMPW, HW, HZMPW,
MPW, NN, WW
10°-35° Adjustable (determined by housing)



NPRLV-4RG

SH 4" Round Adjustable Gimbal
BB, BZ, MPW, NN, WW
10°-35° Adjustable (determined by housing)



NPRLV-4SG

SH 4" Square Adjustable Gimbal
BB, BZ, MPW, NN, WW
10°-35° Adjustable (determined by housing)



NPRLV-4RNB

4" Round Bullnose
BB, BZ, MPW, NN, WW
Non-Adjustable



NPRLV-4SNB

4" Square Bullnose
BB, BZ, MPW, NN, WW
Non-Adjustable



NPRLV-4RNDC

4" Round Reflector w/ Round Aperture
BB, BW, BZ, CMPW, CHMPW, HW, HZMPW,
MPW, NN, WW
Non-Adjustable



NPRLV-4SNDC

4" Square Reflector w/ Round Aperture
BB, BW, BZ, CMPW, CHMPW, HW, HZMPW,
MPW, NN, WW
Non-Adjustable



NPRLV-4RPH

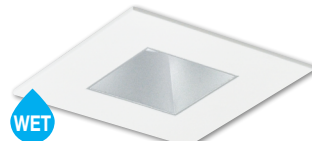
NPRLV-4RPHA

4" Fixed Pinhole
4" Adjustable Pinhole - 30°
BB, BMPW, HZMPW, MPW



NPRLV-4RSL

4" Round Adjustable Slot Aperture
BB, BMPW, HZMPW, MPW
30° Adjustable



NPRLV-4SNDSO

4" Square Reflector w/ Square Aperture
BB, BW, BZ, CHMPW, HN, HW,
HZMPW, MPW, WW
Non-Adjustable



NPRLV-56RNDC

5 1/2" Round Reflector
BB, BW, CHMPW, MPW, WW
Non-Adjustable

TRIM FINISHES



BB BMPW BW BZ CHMPW CMPW HW HZMPW MPW NN WW

SH designates trims compatible with shallow housings)

ACCESSORIES Optional accessories easily install between module and die-cast trim at any point in the design process.



Frosted Optics

60° or 73°

Replaces optics included with each LED module



Premium TIR Optic

22° or 26°

Not compatible with Comfort Dim Module



Opaque Collar Snoot

5/8", 3/4" or 1"

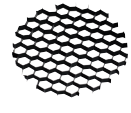
Black, Matte Powder White or White



Translucent Deco Collar

5/8", 3/4" or 1"

Blue, Frost, Amber or Red



Hex Cell Louver

Reduces aperture brightness and light output by about 20%