

The background features a series of thin, light gray curved lines that sweep across the page from the top left towards the bottom right. Small, light gray circular dots are scattered along these lines, creating a sense of depth and movement.

**NORA<sup>®</sup>**  
**L I G H T I N G**

**PRODUCT PREVIEW**

**1<sup>ST</sup> Quarter 2024**



M2 Series



LED Tape Light  
L-Line LED Linear



Onyx Downlights



LED Exit Sign



# Large enough to do it right, Small enough to care.

## FAMILY OWNED BUSINESS SINCE 1989

Since our founding in 1989, Nora Lighting has grown from a small importer of lighting fixtures to a designer and manufacturer of quality LED and non-LED residential and commercial lighting. Our long-time customers and reps are familiar with our humble beginnings as a company and for those of you who are newer to Nora, this story is at the core of how we make choices and how we operate and thrive as a business.

Jilla and I fled Iran in 1987 as refugees and started Nora Lighting two years later in a 1,000 ft<sup>2</sup> office with only 4 SKU's. With no lighting background or business network in the US, we earned our customers' trust through honest business practices, exceptional service, and quality products. Our same core values of "Service, Quality, and Value" are still very much true today. Through tireless hard work with our amazing Nora team, we were able to expand our product offering, engineering capabilities, warehousing, and sales network to what it is today. We proudly boast a portfolio of over 40,000 SKUs and have our products stocked in over 300,000 ft<sup>2</sup> of warehouse space across the country.

In 2013, our daughter Neda joined our business to lead it into the second generation. We have supported this next generation of our business with large investments in company infrastructure, inventory, warehousing, and personnel. Our 100% cloud-based ERP system allows us and you to access real-time information from anywhere at any time and has increased our inventory accuracy to over 98% month-over-month. Our newly renovated R&D center is equipped with the latest technology and a UL certified lab. Our product offering, with its quality and pricing is unparalleled in our industry. Our warehouses are filled wall-to-wall with inventory and in 2022 alone, we added two new distribution centers and added two new sales territories to allow us to better serve our customers and reps.

We look forward to welcoming you to our new state-of-the-art showroom and training facility in Los Angeles starting in 2023. To know us is to understand our slogan of "large enough to do it right, small enough to care." We are a proud family-owned and operated business. Doing business with Nora means you come first because family always comes first.

Thank you for trusting us and supporting us over the last 35 years. We are confident that we have positioned ourselves for many more successful years.

Fred Farzan  
President

Specular Clear reflectors now available



NC2-431  
4" Open Reflector



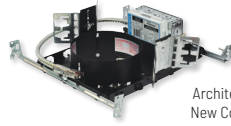
NC2-638  
6" Decorative Glass



NCR2-61  
6" Retrofit Open Reflector



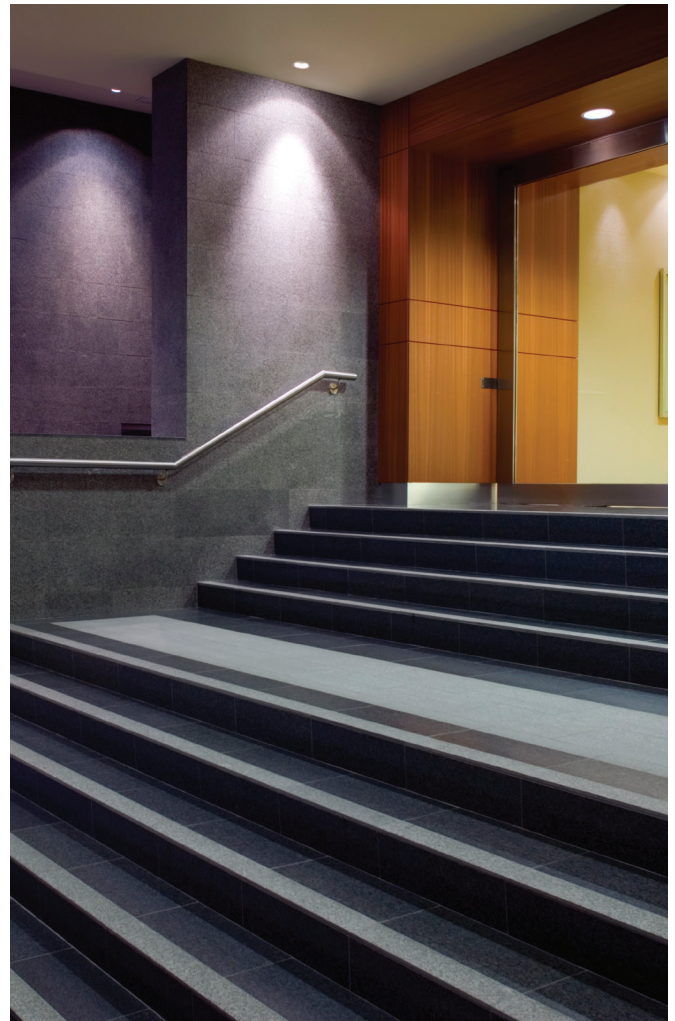
NC2-836  
8" Wall Wash



NCAH2  
Architectural/Commercial  
New Construction Housing

**Universal Housing**  
has Adjustable Collar  
for Deep Ceilings

Scan for info.



# SAPPHIRE SERIES

Architectural and Commercial LED Downlights  
Up to 8000 lumens · 2700K to 4000K or Comfort Dim

Sapphire II luminaires are a high efficiency, commercial series available in **900 to 4500 lumen packages in 2700K, 3000K, 3500K and 4000K at 90+ CRI**. Luminaires utilize the latest COB technology by Cree®, allowing for better optic control offering three beam spreads. Beam spreads focus the light down to the work plane from high ceiling applications. **Sapphire I** luminaires are available in **6000 or 8000lm in 3000K, 3500K or 4000K**. Both series are available in new construction, remodel and retrofit configurations. The fixtures are specifiable in 120V and 277V, cULus listed for wet locations, ENERGY STAR certified and a 5-year limited warranty.



Scan for info.



# ADJUSTABLE SAPPHIRE II

4", 6" and 8" LED Downlights  
Over 3000lm / 35° adjustment

Sapphire commercial downlights now include a high lumen adjustable with a bias cut reflector. Utilizing Cree® COB technology, Sapphire Adjustable Series is available from **900 to 3000+ lumen packages in 2700K, 3000K, 3500K and 4000K at 90+ CRI**. Adjustable luminaires are offered in three beam spreads to focus the light to the desired space. The fixtures have universal 120-277V input, 0-10V and Triac dimming, cULus listed, ENERGY STAR certified and a 5-year limited warranty.



NCAH2  
Adjustable Sapphire II Non-IC  
New Construction Housing

Adjust up to 35°



NC2-439  
4" Adjustable



NC2-639  
6" Adjustable



NC2-839  
8" Adjustable





NRM2-413  
4" Square



NRM2-519  
5" Adjustable  
Regressed Reflector



NRM2-612  
6" Baffle



NRM2-611  
6" Retrofit Reflector

Each retrofit includes a medium base socket for easy retrofitting



Scan for info.



# MARQUISE II

## Light Commercial / High-End Residential LED Downlights + Retrofit

Utilizing the same Cree COB LED and driver packages as the Sapphire II, the Marquise II series features LED packages for light commercial and high-end residential **IC and non-IC** applications from **900 to 2500 lumens in 2700K, 3000K, 3500K and 4000K**. Marquise II is available in **4", 5" and 6" reflector, adjustable, slope ceiling and Retrofit**. The Marquise II uses the latest COB technology by Cree®, allowing for better optic control offering three beam spreads. Beam spreads focus the light down to the work plane from high ceiling applications. The Marquise II series is available in new construction, remodel and retrofit configurations.



NRM2-6S12  
6" Sloped Baffle



NHMIC2-926  
6" Sloped Housing



NHMIC2  
New Construction Housing



NHRM2  
Remodel Housing



Scan for info.



NQZ2-41TWTW-MPW  
4" Open Reflector



NQZ2-61TWTW-MPW  
6" Open Reflector



NQZ2-81TWTW-MPW  
8" Open Reflector

# QUARTZ

## Architectural and Commercial LED Downlights 4", 6" and 8" / Selectable Lumens & Selectable CCT

Quartz Series features two tunable switches located on the top of the driver unit on each luminaire; Selectable Lumens allows the end user to determine the wattage and Selectable CCT allows for selectable color temperature. Quartz series features LED packages from **800 to 2700 lumens in 3000K, 3500K or 4000K at 90+ CRI**. Each reflector comes standard with matte powder white finish, optional snap-in reflectors in haze, specular clear and diffused clear finishes and oversized rings are available. The luminaires require no frame-in or housing, ideal for retrofit, new construction or remodel applications (new construction frame-ins are available). Fixtures are offered with universal input 120V-277V, 0-10V dimming, cETLus listed for wet locations, ENERGY STAR certified, and have a 5-year limited warranty.



Selectable Lumens  
Three position sliding switch



Selectable CCT  
Three position sliding switch  
3000K / 3500K / 4000K

**Specular Clear**  
insert & emergency  
options now available



NQZ-x1REFLC  
Specular Clear Reflector Insert



NQZ  
New Construction  
Frame





NM2-MLS3

3-Head Multiple Plate

Scan for info.



NM2-2RDC

M2 Downlight

## M2 MULTIPLES

Modular Multiple Lighting System  
 Customizable with Four Trim Types  
 Each luminaire can deliver up to 600 lumens

Our M2 LED luminaires are now available in a Multiple Lighting System (MLS). The modular system requires components be ordered a la carte to create a recessed multiple. Available in **one, two, and three light** linear configurations, the units are completely serviceable from below and require **no housing**. M2 LED luminaires are available in **four round options** in **2700K or 3000K** and delivering **up to 600 lumens**. Each luminaire can be customized with accessories that include **pinhole trim, wall wash trim or reflector inserts**.



M2 LED Multiple Lighting System  
 Marquise LED Downlights

2021 WINNER

## FLANGED + TRIMLESS LED MULTIPLES

LED Dedicated and Medium Base PAR30  
 Multiple Lighting System

LED dedicated MLS luminaires allow for adjustable lighting modules and pull-down adjustables in flanged and trimless styles. Offered in **one, two, and three light** linear configurations, the units are completely serviceable from below and can be specified in either **120V or 277V**. MLS can be wired as a single complete unit or as two to three individually controlled or dimmed modules.

Trimless LED adjustable MLS produces **2100lm per gimbal** in **2700K, 3000K, 3500K or 4000K** with specifiable beam spreads. The mud plates frame the housing with a clean sharp edge leaving a smooth flangeless appearance that blends in with the ceiling line. Flange kits and medium base version are also available.

The Flanged MLS LED fixtures produce **900 to 2500 lumen output** in **2700K, 3000K, 3500K or 4000K** with specifiable beam spreads. The MLS face plate is regressed to maintain a clean ceiling appearance. Trim finishes are **white/white (shown), white/black, and silver/silver**.

The Pull-Down units offer the ultimate in flexibility. Each LED module can be left in the housing and adjusted or can be pulled down partially or completely to gain full adjustability in aiming the fixture. Each module produces **2100 lumens at 90+CRI** in **2700K, 3000K, 3500K, or 4000K CCTs** options. Available in **white or black finishes, flanged and trimless styles**, the MLS LED Pull-Down can be specified with spot or flood beam spreads.

Scan for info.



NMRTL-12 & (2) NMRT-652TL  
 Trimless MLS

NMRG2-11 & NMRT2-11  
 Flanged MLS



NMRTLGPD-13  
 Pull Down MLS  
 Shown with flange kit.





**IC Rated**  
Accepts flanged and trimless mud plate in ceilings up to 1-1/2"

**Flanged or Trimless**  
Painted flange or trimless mud plate in one, two or three heads

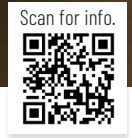
- 2700K
- 3000K
- 3500K
- 4000K
- 5000K
- COMFORT DIM

**Die-Cast Aluminum Heat Sink**  
with COB LED technology



**Field Changeable Optics**  
Each module includes spot, narrow flood and flood optics

**Four Trim Styles**  
available in Fixed Downlight, Adjustable Snoot, Adjustable Gimbal & Wall Wash in variety of finishes



# IOLITE MULTIPLES

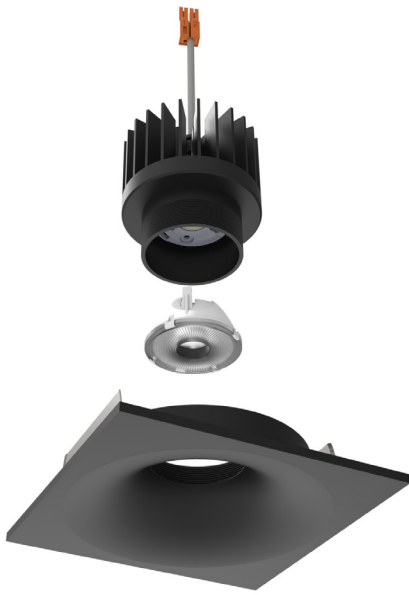
1000lm per head / Single to Three Light Configurations  
Customizable with Four Trim Styles  
Now Available with Trimless Mud Plate!



The popular Iolite Downlight Series is now available in multiple lighting system configurations. Iolite MLS is customizable in **one, two, and three light** linear configurations with **four different trim types**—downlight, adjustable snoot, adjustable gimbal or wall wash. Trims can be installed with painted flange or trimless clean appearance. The IC rated housing is completely serviceable from below and includes individual 120V-277V Triac/ELV/0-10V drivers for each module.

Iolite MLS Series LED dedicated units feature COB LED technology. Each individual luminaire produces **over 1000 lumens** in 2700K, 3000K, 3500K, 4000K, 5000K or 800lm with **Comfort Dim technology**. Trim finishes include **matte powder white, black or haze** and trim options are customizable. Each trim includes three field-adjustable optics, optional premium TIR optics are available. Trims can be re-arranged in the field to desired configuration and adjustment.





NIO-4SNB  
4" Iolite Square Bullnose



NIO-4SND  
4" Iolite Square Downlight



NIO-4RND  
4" Iolite Round Downlight

Scan for info.



# IOLITE SERIES

1", 2" and 4" LED Downlights  
Dedicated and Retrofit  
800 to 2500 Delivered Lumens

Iolite family is a series of 1", 2", and 4" dedicated and 4" retrofit LED adjustable downlights in square and round apertures. This modular die-cast aluminum system features the patented, easy, no-tool-required replacement of the driver, COB LED technology and one of the largest trim selections in the industry. The reflectors have sharp, clean edges and can be aimed down for general lighting or adjusted to highlight or wall wash a focal point. Each reflector includes three field adjustable optics and accept optional accessories to customize each application. Iolite LED module deliver 600lm (1") or 800-2500lm (2" and 4") in various kelvin temperatures (2700K to 5000K) or Comfort Dim (3100K-2000K). Housings include an IC Air-Tight New Construction, Chicago Plenum, Remodel or 4" Retrofit. Dimming drivers include Lutron EcoSystem®, 0-10V, Triac or ELV and emergency options.







**Dedicated Housing**  
Patented driver assembly allows for tool-less removal

**Mud Ring**  
Round or Square Die-Cast Aluminum

**Die-Cast Aluminum Heat Sink**  
with COB LED technology

**Field Changeable Optics**  
Each module includes spot, narrow flood and flood optics

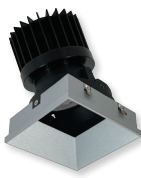
Scan for info.



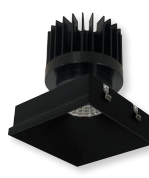
**NIO-4PRTLA**  
4\"/>



**NIO-4PRTLNDNC**  
4\"/>



**NIO-4PSTLA**  
4\"/>



**NIO-4PSTLNDNC**  
4\"/>



**NIO-4RTSLA**  
4\"/>



**NIO-4RTFA**  
4\"/>

# IOLITE TRIMLESS

2" and 4" Round and Square Reflectors  
New 4" Flange accessory for trimless

Iolite Trimless has no exposed trim flange and does not extend below the ceiling plane. This clean and sophisticated look is accomplished by mudding the trimless mud ring to the ceiling, then snapping the trimless reflector into the ring. **Iolite Trimless** is available in 2" and 4" round or square apertures. **New 4" PLUS series** features round and square adjustable and fixed downlight. Trimless requires three parts: Iolite Housing, Mud Ring and Reflector. Each trimless delivers from 800 to 2500 lumens in various kelvin temperatures (2700K to 5000K) or **Comfort Dim** (warm dim).



**NIO-2RTL**  
2\"/>



**NIO-4STLNDNC**  
4\"/>



**NIO-4RTLNDNC / NIO-4RTFA**  
4\"/>

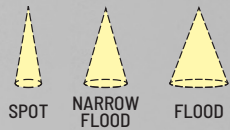


**120V Input**  
Triac or ELV dimming

**Quick Connects**  
Easy installation in  
IC Air-Tight installations



**Dedicated CCT**  
COB LED technology



**Field Changeable Optics**  
Each module includes spot,  
narrow flood and flood optics

**Five Trim Styles**  
Downlight, Adjustable,  
Bullnose, Pinhole, & Square  
in variety of finishes

Scan for info.



# IOLITE CAN-LESS

1", 2" & 4" LED Downlights  
No Housing Required!

Award winning Iolite small aperture LED downlights are now available without any recessed housings. Simply cut the ceiling, wire the junction box and insert the luminaire in the ceiling cavity. IC Air-Tight rated luminaires are available in round or square apertures in a variety of styles and finishes. Available in three aperture sizes and up to 1250 lumens in dedicated color temperatures. Each LED module includes three field changeable optics to customize each application. Dedicated color temperatures include 2700K, 3000K, 3500K, 4000K or Comfort Dim (warm dimming).



NIOC-1RNB  
1" Bullnose

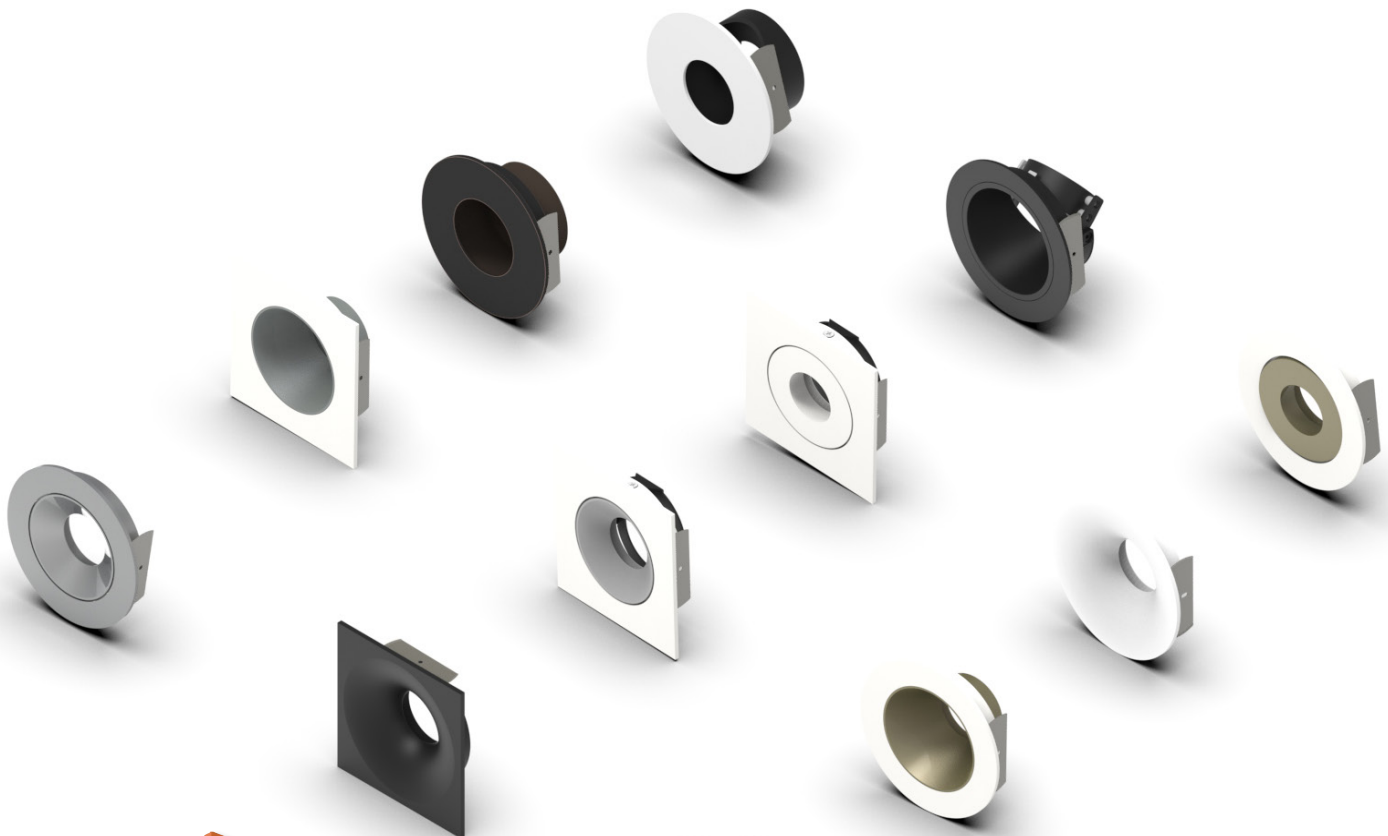
NIOC-2RND  
2" Downlight

NIOC-2RPH  
2" Pinhole

NIOC-4RSLA  
4" Adjustable

NIOC-4SNSQ  
4" Square Downlight





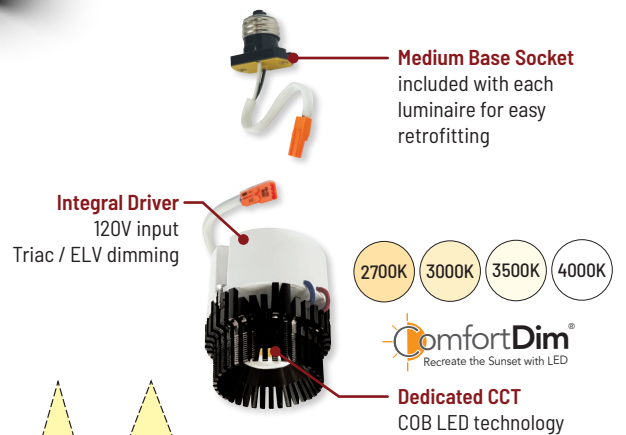
5"/6" Trims  
now available



NPR-56RND  
5 1/2" Downlight

NPR-4RND  
4" Downlight

Scan for info.



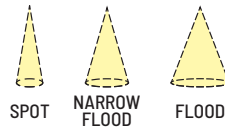
Medium Base Socket  
included with each  
luminaire for easy  
retrofitting

Integral Driver  
120V input  
Triac / ELV dimming

2700K 3000K 3500K 4000K

ComfortDim®  
Recreate the Sunset with LED

Dedicated CCT  
COB LED technology



Field Changeable Optics  
Each module includes spot,  
narrow flood & flood optics



New 5 1/2" Trim  
Same aperture as  
4" trims

# PEARL RETROFIT

4", 5" & 6" Round and Square Reflectors  
Up to 1200 lumens & fits shallow housings

Pearl LED Retrofit luminaires are the high-end, quality solution for easy LED retrofitting in residential and light commercial applications. With a maximum height of just 4-1/2", luminaires can be retrofitted in most 4" IC and non-IC housings--including shallow! Available in a beautiful array of fixed and adjustable styles in ten finishes, each Pearl includes three field changeable optics for maximum design control. Optional accessories can further customize the fixtures.





Scan for info.



NPRLV-4RND  
4" Low Voltage Downlight

# PEARL LOW VOLTAGE

4", 5" & 6" Round and Square 12V MR16 Retrofit  
Up to 1100 lumens & fits shallow housings

Pearl low voltage LED retrofit luminaires are a high grade solution to replacing old MR16 lamps. A built-in driver converts the 12V voltage into a specification grade downlight with **three field changeable optics** for maximum design control. With a maximum **height of just 4-1/2"**, luminaires can be retrofitted in most 4" IC and non-IC housings—including **shallow!** Available in a beautiful array of fixed and adjustable styles—in ten finishes. Optional accessories can further customize the fixtures.

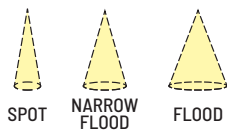
**Integral Driver**  
120V input  
Triac / ELV dimming

**GU5.3 Socket Adapter**  
Easily retrofit 12V MR16 lamps



**ComfortDim®**  
Recreate the Sunset with LED

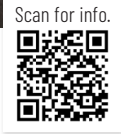
**Dedicated CCT**  
COB LED technology



**Field Changeable Optics**  
Each module includes spot, narrow flood & flood optics

**New 5"/6" Trim**  
Same aperture as 4" trims





# ONYX LOW VOLTAGE

4" 12V Low Voltage Retrofit with Selectable CCT  
800 lumens

Onyx Low Voltage Retrofit Series is an economical and quality luminaire compatible with existing, new construction or remodel low voltage housings. 4" downlights produce over 800 lumens and include a Selectable CCT switch to select the color temperature from 2700K / 3000K / 3500K / 4000K / 5000K. An integrated driver converts the voltage from 12V and dimmable with compatible Triac or ELV dimmers



NOXLV-4R1  
4" Reflector



NOXLV-4R2  
4" Baffle



**Selectable CCT**

Five position sliding switch  
27K / 30K / 35K / 40K / 50K



# M1 SERIES

1" 12V Can-less Downlights  
No housing required & IC rated  
100lm / 2W • 2700K or 3000K

M1 miniature 1" recessed downlights features quality and convenience with easy installation for indoor and outdoor applications. LED luminaires include **four plastic downlight trims**, four optics and 6" quick connect for **12V driver**. **No housing is required** and can be installed in insulated ceilings. Field changeable optics and trims allow for each installation to be customized per application. LED luminaires delivers **100 lumens** and available in **2700K or 3000K** at 90+ CRI and requires a 12V dimmable driver. New construction rough-in plate available.



Scan for info.



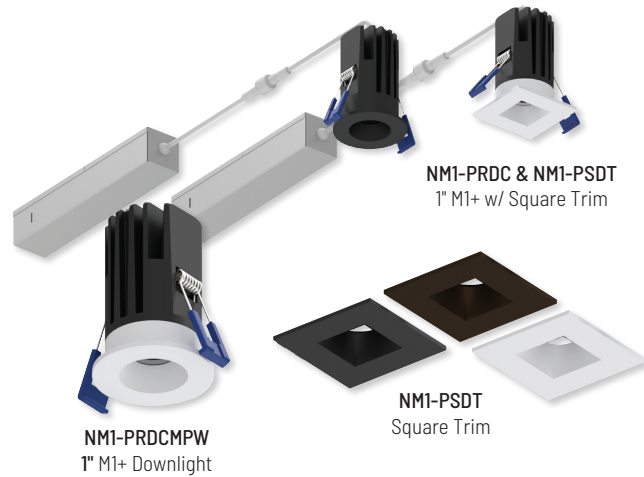
# M1+ SERIES

1" 120V Can-less Downlights  
No housing required • IC Air-Tight  
600lm / 9W • 2700K or 3000K

M1+ is an upgrade to our first generation M1 1" downlights. From 12V input to 120V input with Triac or ELV dimming. From 100 lumens to 600 delivered lumens. Die-cast trims come standard in round matte black or matte powder white finishes. Luminaires include a pre-wired junction box, no housing is required. IC Air-Tight rated luminaires are simple to install.



Scan for info.



Scan for info.



# M4 SERIES

4" 120V Can-less Downlights  
No housing required • IC Air-Tight  
Up to 1150lm • 2700K or 3000K

M4 4" recessed downlights resemble other can-less downlights (M1 and M2). Luminaires include a pre-wired junction box, no housing is required. IC Air-Tight rated luminaires are simple to install with **round or square trims in a variety of styles including downlight, adjustable gimbal or elbow**. Delivering up to **1150 lumens** in **2700K or 3000K** at 90+ CRI. New construction rough-in plate available.



**Mud Plate**  
Installs against drywall  
without any housing

**120V Input**  
Triac or ELV dimming

**Quick Connects**  
Easy installation in  
IC Air-Tight installations

**Patent Pending**  
Steel plates hold trimless against  
magnet inside mud plate

**Dedicated CCT**  
2700K, 3000K or 4000K\*  
\* Select trims



**NM2-2RTLDC**  
Trimless Downlight



**Knife edge trimless appearance**  
with no exposed flange



**Trimmed appearance**  
available in matte black and  
matte powder white



# M2 SERIES

2" Recessed Downlights  
Available in Trimmed and Trimless  
400lm to 900lm • 2700K, 3000K or 4000K

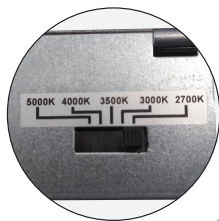
M2 recessed downlights do not require a housing, which makes installation easy. Simply cut the ceiling, wire the junction box and insert the luminaire in the ceiling cavity. IC rated luminaires are available in round or square trims in a variety of styles including downlight, shower, adjustable gimbal, elbow, pinhole, wall wash and baffle and are customizable with accessories. Delivering over 900 lumens in 2700K, 3000K or 4000K at 90+ CRI. New construction rough-in plate available.



Now available with  
0-10V dimming  
(120-277V)



NLTH-41TW-MPW  
4" Theia



Selectable CCT

Five position sliding switch  
27K / 30K / 35K / 40K / 50K

Scan for info.



NLTH-61TW-MPW  
6" Theia



NLTH-81TW-MPW  
8" Theia

## THEIA SERIES

4", 6" 8" Can-less Downlights with Deep Reflector  
5 Selectable CCTs (27K / 30K / 35K / 40K / 50K)  
Up to 2100lm • IC Air-Tight

Commercial grade downlights without any frame-in or housing required. Each luminaire includes a dedicated junction box with **integral CCT switch**. 4" (950lm), 6" (1400lm) and 8" (2100lm) downlights are IC air-tight rated, include **five color temperatures (27K / 30K / 35K / 40K / 50K)** and dimmable with compatible phase or 0-10V dimmers. Wet location rated luminaires are ideal for variety of applications indoor or outdoor.



Selectable CCT

Five position sliding switch  
27K / 30K / 35K / 40K / 50K



NEFLINTW-S4MPW  
4" Square



Scan for info.



NEFLINTW-R6MPW  
6" Round

## FLIN

4" and 6" Can-less Wafer Downlights  
Round or Square Aperture  
Selectable CCT (27K/30K/35K/40K/50K)

FLIN thin regressed downlights offer **quick, economical recessed IC Air-Tight LED** lighting for remodel or new construction applications. Simply cut the hole, wire the junction box, and insert FLIN using the spring coiled pressure clips which secure it tightly to the ceiling. **No housing is required!** FLIN is now available in **120-277V input** and produces up to **1300 lumens** with a **Selectable CCT switch (27K/30K/35/40K/50K)**. The regressed lens with sharp baffle cuts reduces aperture brightness. FLIN series requires **less than 2"** ceiling clearance. A new construction frame-in plate and oversize ring available.







NFLAT-R4TWMPW  
4" FLAT



Selectable CCT

Five position sliding switch  
27K / 30K / 35K / 40K / 50K



NFLAT-R6TWMPW  
6" FLAT

## FLAT

4" and 6" Can-less Wafer Downlights  
Selectable CCT (27K/30K/35K/40K/50K)

FLAT wafer can-less downlights feature a **non-metallic trim** for corrosive environments. IC Air-Tight rated luminaires are similar to our existing FLIN series, where **no housing is required** and **only 1/2" height**. Delivering up to **1050 lumens** with a **Selectable CCT** switch (2700K / 3000K / 3500K / 4000K / 5000K) switch built-in to the remote junction box.



NFLINA-R4TWMPW  
4" FLIN Adjustable



Selectable CCT

Five position sliding switch  
27K / 30K / 35K / 40K / 50K



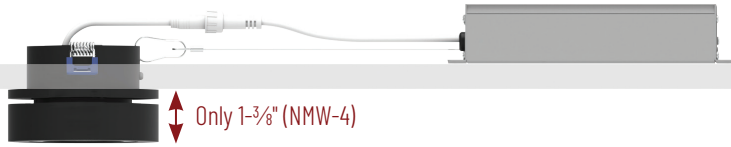
NFLINA-R6TWMPW  
6" FLIN Adjustable

## FLIN ADJUSTABLE

4" and 6" Can-less Wafer Downlights  
25° Adjustment & 180° Rotation  
Selectable CCT (27K/30K/35K/40K/50K)

FLIN Adjustable can-less downlights **adjust up to 25°** with the same appearance as FLAT downlights. IC Air-Tight rated luminaires require **no housing** and **rated for wet locations**. Delivering up to **1100 lumens** with a **Selectable CCT** switch (2700K / 3000K / 3500K / 4000K / 5000K) switch built-in to the remote junction box.





Only 1-3/8" (NMW-4)



NMW-2  
2" M-Wave

NMW-4  
4" M-Wave

Scan for info.



## M-WAVE SERIES

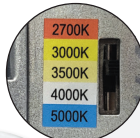
Adjustable Can-less Downlights  
90° Tilt & 350° Rotation  
Dedicated CCT (2700K or 3000K)

M-Wave can-less luminaires offer the most versatility for aiming without any housing needed! IC Air-Tight rated luminaires extend up to **90° from surface and rotate 350°**, illuminating any direction needed. M-Wave downlights appear as puck lights, up to 1-3/8" off the surface when flush and delivering over 1250 lumens in dedicated CCT (2700K or 3000K).



Selectable CCT

Five position sliding switch  
27K / 30K / 35K / 40K / 50K



NMC-4RTWMPW  
4" M-Curve

NMC-6RTWMPW  
6" M-Curve

Scan for info.



## M-CURVE SERIES

Adjustable Can-less Downlights  
Extends up to 80° & 360° Rotation  
Selectable CCT (27K/30K/35K/40K/50K)

M-Curve can-less adjustable downlights are a unique and functional. Extending 80° while never exposing the ceiling aperture. IC Air-Tight rated luminaires extend up to **80° and rotate 360°**, illuminating any direction needed. Delivering up to 1300 lumens with a Selectable CCT (2700K / 3000K / 3500K / 4000K / 5000K) switch built-in to the remote junction box.





Scan for info.



NOXTW-431  
4" Reflector

5000K  
4000K  
3500K  
3000K  
2700K



**Selectable CCT**

Five position sliding switch  
27K / 30K / 35K / 40K / 50K

# ONYX DOWNLIGHTS

4", 5" and 6" Retrofit Downlights  
Round or Square Aperture  
Dedicated or Selectable CCT

Onyx LED retrofit downlights feature designer trim types (baffle, reflector and square) with simple installation and quality. Options include **dedicated or selectable color temperature** and trim inserts to change finish or trim type. Die-cast aluminum construction provides clean sharp edges and is suitable for use with most 4", 5" and 6" recessed housings.



NOXTW-5632  
5 1/2" Baffle



NOXAC-432  
4" Baffle



NOXAC-5631  
5 1/2" Reflector



NOXAC-436  
4" Square



NOXAC-636  
6" Square





Scan for info.



# AC ONYX ADJUSTABLE

4", 5" and 6" Retrofit Downlights  
Selectable CCT (27K/30K/35K/40K/50K)

AC Onyx adjustable LED retrofit downlights **requires no driver**, compatible with almost all recessed housings. **Wet location rated** luminaires tilt up to **15° tilt and 360° rotation**. An integrated **selectable CCT switch** changes the **color temperature (27K / 30K / 35K / 40K / 50K)** and dimmable with compatible Triac or ELV dimmers.



Scan for info.



# AC ONYX WALL WASH

4" Wall Wash Retrofit  
Round or Square Aperture  
Selectable CCT (27K/30K/35K/40K/50K)

AC Onyx adjustable LED retrofit downlights **requires no driver**, compatible with almost all recessed housings. **Wet location rated** luminaires include an integrated **selectable CCT switch** to change the **color temperature (27K / 30K / 35K / 40K / 50K)** and dimmable with compatible Triac or ELV dimmers.



**Retrofit**  
over 4" recessed  
 housings



Scan for info.



**Surface Mount**  
over 4" octagonal  
 junction box



**Selectable CCT**  
Five position switch  
27K / 30K / 35K / 40K / 50K

**NSLIM-4RL1TWMPW**  
4" Slim LED luminaire

# SLIM

4" LED Surface Mount / Retrofit  
800 lumens

Slim LED surface mount luminaires easily install over 4" octagonal junction boxes. Alternatively an optional retrofit kit is also included to install over 4" recessed housings. Luminaires produce over 800 lumens and include a selectable CCT switch to change the color temperature from 2700K / 3000K / 3500K / 4000K / 5000K.



**NSLIM-4RDTB**  
Black Ring



**NSLIM-4RDTS**  
Silver Ring



Scan for info.

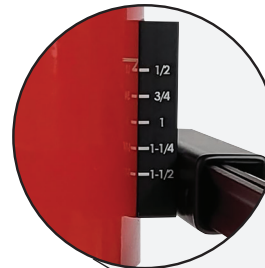


# 4" JUNCTION BOX

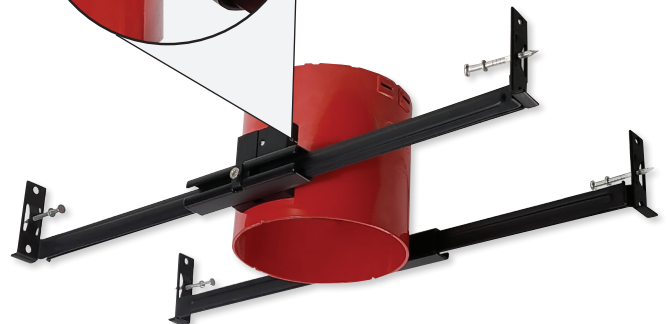
IC Air-Tight Recessed Housing  
(Compatible with 4" AC Onyx and Slim)

Dedicated new construction housing for use in insulated ceilings can be in direct contact with insulation. Powder coated steel housing meets 2 hour fire rating per international building code section 714 for 1-hour and 2-hour fire rated assemblies. Air-tight construction provides energy savings by reducing the flow of air through the ceiling. The housing is labeled for use with LED downlights or as an outlet box.

Ceiling Thickness



**Patent Pending**



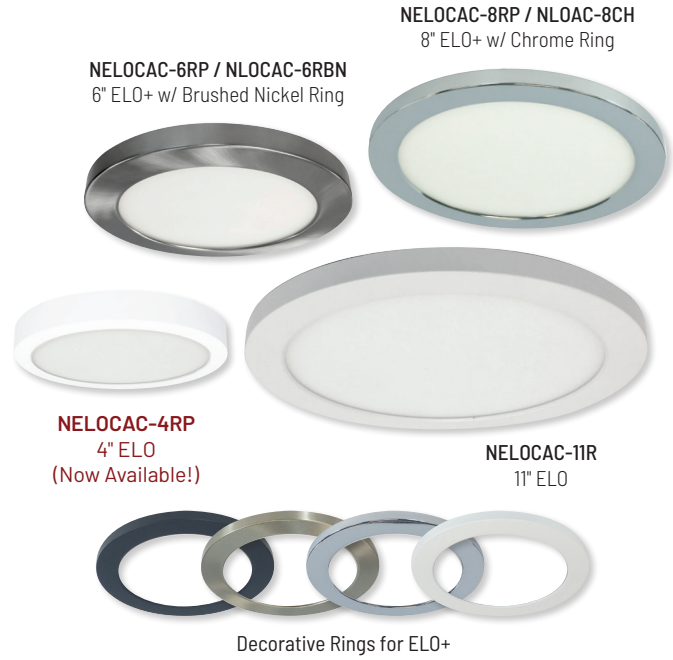
**NFJB-R4**  
4" Junction Box  
for fire rated assembly



# ELO & ELO+

4", 6", 8" and 11" Surface Mount or Retrofit  
Up to 1700 lumens · 2700K to 5000K

ELO series is a thin 1/2" surface mount luminaire designed to surface mount over a standard or fire rated junction box, or retrofit existing 5" or 6" recessed housings. This economical series is available in **two styles: ELO (80 CRI) or ELO+ (90 CRI); four sizes: 4" (650lm), 6" (1080lm), 8" (1100lm) and 11" (1700lm).** ELO luminaires are available in dedicated CCT options: **2700K, 3000K, 3500K, 4000K, 5000K in a white finish.** Dimmable with Triac or ELV dimmers, luminaires are a practical and cost effective solution for multi-family, residential and light commercial applications.



# 16" ELO

Surface or Pendant Mounted  
2100 lumens · 2700K, 3000K or 4000K  
Now available in stem mount and black finish!

16" ELO luminaire is only 1" thick and can be **surface mounted** over standard junction boxes or **pendant mounted** with an optional accessory. Luminaires **deliver 2100 lumens in 2700K, 3000K or 4000K @ 90+ CRI.** Efficient luminaire delivers 100 lumens per watt, meeting the stringent energy requirements of **ENERGY STAR** and California **JA-2019 Title 24** requirements.



# wELO

8" and 11" Surface Mount  
1079lm or 1588lm · 2700K, 3000K or 4000K  
Wet Location rated!

wELO surface mount luminaires are 1" thick with a regressed lens. Wet location rated luminaires are designed to surface mount over a standard or fire rated junction box. Available in **8" (1079lm)** and **11" (1588lm)** in dedicated CCT options (**2700K, 3000K, or 4000K**) in a **white finish.** An integral 0-10V drivers accept universal input (**120-277V**). Luminaires are a perfect solution for wet location, multi-family, residential and light commercial applications.



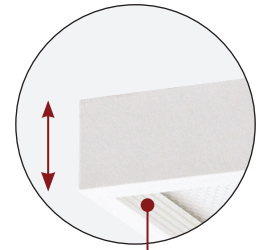


NLOS-R42L  
4" Round



NLOS-S42L  
4" Square

Only 7/8"  
Mounts over  
junction box



Regressed Baffle  
Soft ascending steps

Scan for info.



# SURF

4", 6" and 7" Surface Mount  
Up to 1150 lumens  
Round or Square Aperture

SURF Edge-Lit Surface Mount is an aesthetically pleasing luminaire that produces even illumination while reducing glare. The specially designed regressed lens greatly reduces aperture brightness and extends less than 7/8" from the ceiling. Series is available in square and round, 2700K, 3000K, 3500K, 4000K and 5000K temperatures with an architectural elegance for today's specification standards. SURF mounts easily over a standard or fire rated fixture junction boxes.



NLOS-S62L  
6" Square



NLOS-R72L  
7" Round



NLOPAC-R4REGT24  
4" Regressed

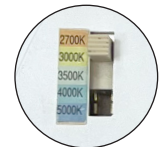


NLOPAC-R4509T24  
4" AC Opal

Now available in Black finish!



NLOPAC-R6TW  
6" AC Opal with  
Selectable CCT



Selectable CCT

Five position sliding switch  
27K / 30K / 35K / 40K / 50K

Scan for info.



# OPAL

4" to 8" Surface Mount or Retrofit  
Up to 2150 lumens  
Regressed • PIR Motion Sensor • Standard

AC Opal Series LED fixtures are designed to surface mount over a standard junction box. The low 7/8" profile luminaires are available in 4", 6" and 8" sizes from 700lm to 2150lm in three finishes; 4" and 6" regressed style and 7" 1050lm unit with PIR motion sensor in white. Opal is an excellent energy efficient lighting solution for laundry rooms, closets, pantries, hallways and showers in residential and commercial retrofit or new construction applications.



NLOPAC-R7MS  
7" PIR Motion Sensor



NLOPAC-R8T24  
8" AC Opal





Scan for info.



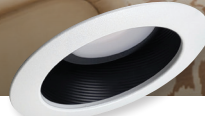
**NTM-615**  
6" Metal Baffle



**NTP-614**  
6" Plastic Baffle



**NLRs-611**  
6" LED Reflector  
Selectable CCT



**NLRS-612**  
6" LED Baffle  
Selectable CCT



**Selectable CCT**  
Five position sliding switch  
27K / 30K / 35K / 40K / 50K

## SLOPED CEILING

6" New Construction and Remodel  
2/12 (10°) to 6/12 (26.5°)

Variety of IC air-tight sloped ceiling housings can be adjusted for 2/12 (10°) to 6/12 (26.5°) ceiling pitches. Housings include a medium base socket for lamps or LED luminaires. Sloped LED luminaires include a retrofit adapter for new and existing medium base housings. LED luminaires also include a selectable CCT switch that allows the end user to change the color temperature if desired.



**NHIC-926DWQAT**  
6" Double Wall  
Medium Base Housing



**NHIC-926QAT**  
6" Medium Base Housing

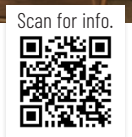
**NHIC-926LMRAT**  
6" LED Dedicated Housing

**NHIC-926QAT**  
6" Medium Base Remodel

**NHIC-926LMRAT**  
6" LED Dedicated Remodel







NTM-616/45  
6" Reflector



NTM-617/45  
6" Baffle



NLRS-6S11  
6" LED Reflector



NLRS-6S12  
6" LED Baffle

# SUPER SLOPED CEILING

6" New Construction and Remodel  
7/12 (30°) to 12/12 (45°)

Super sloped ceilings' pitches range from 7/12 (30°) to 12/12 (45°) and require a housing with greater angle. Variety of IC air-tight sloped ceiling housings are available with a medium base socket or dedicated for LED luminaires only. Super sloped LED luminaires include a retrofit adapter for new and existing medium base housings. LED luminaires also have dedicated CCT options in 2700K, 3000K or 4000K.



NHIC-928QAT  
6" Medium Base Housing

NHIC-928LMRAT  
6" LED Dedicated Housing



NHRIC-928QAT  
6" Medium Base Housing

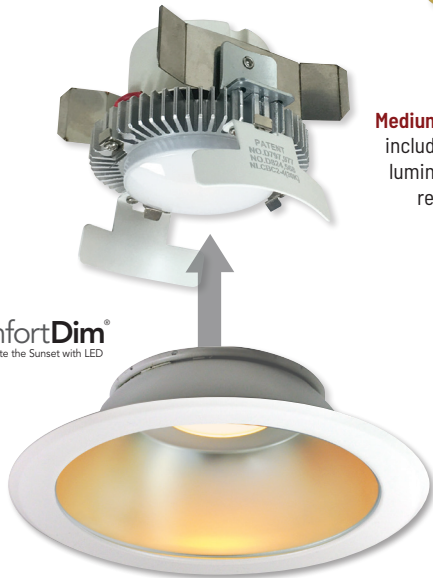
NHRIC-928LMRAT  
6" LED Dedicated Housing



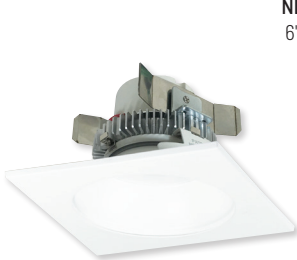
Patent Nos. D824,568S; D797977S; D871,644S



Medium Base Socket included with each luminaire for easy retrofitting



NLCBC2-651  
6" Reflector



NLCBC2-453  
4" Square w/  
Round Aperture



NLCBC2-552  
5" Baffle



NLCBC2-651  
6" Round

Scan for info.



# COBALT CLICK RETROFIT

750 or 1000 lumens  
Specification Options (0-10V & Emergency)

4", 5" and 6" LED Cobalt luminaires provide **750 or 1000 lumen output** and **rendering 90+ CRI**. Cobalt series integrates the latest from the Signify® COB family of LED arrays, giving bright spectacular light output and low power consumption. The deep set lens provides excellent visual comfort, while the UTM design allows the luminaires to be used in shallow housings. The Cobalt Series is available in square or round apertures, adjustable or wall wash reflectors, 0-10V dimming, emergency back-up and 277V input.

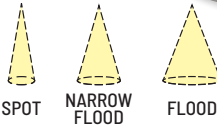


Patent No. D917,090S



Medium Base Socket included with each luminaire for easy retrofitting

Integral Driver  
Triac / ELV dimming



Field Changeable Optics  
Each retrofit includes spot, narrow flood & flood optics



COB LED technology  
2700K, 3000K, 3500K or 4000K



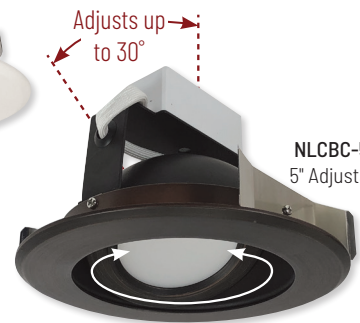
Frosted Lens  
comes pre-installed and additional semi-frosted lens included



NLCBC-669  
6" Adjustable



NLCBC-469  
4" Adjustable



NLCBC-569  
5" Adjustable

Rotates 358°

Scan for info.



# COBALT ADJUSTABLE RETROFIT

4", 5" and 6" Retrofit  
1000 or 1200 lumens

4", 5" and 6" Cobalt Adjustable Retrofit features a patent pending design that rotates and adjusts while never exposing an opening or breaking the ceiling plane. The glide mechanism allows for total aiming flexibility while producing up to **1200 lumens at 90+ CRI**. An excellent solution for slope ceilings, luminaires **include field-changeable optics** for spot, narrow flood and flood beam spreads and **optional TIR premium reflectors** available. Choice of seven different finishes that matches the complete family of Cobalt downlights.



Patent Nos. D824,568S; D797977S; D871,644S



## 6" COBALT HIGH LUMEN

1500 or 2000+ lumen Output  
Requires Dedicated Nora Housing

The **6" Cobalt High Lumen** provides the same look and color consistency as the popular Cobalt and Cobalt Click downlights using a Cree COB, but producing an incredible **2000+ or 1500 lumens at 90+ CRI**. The series is offered in a wide variety of click-on trims, including square and round apertures in eight finishes. The Cobalt HL is a **dedicated unit, not retrofit, that requires a Nora new construction or remodel non-IC housing**. Available in 120V/277V, 0-10V dimming and emergency configuration, the Cobalt HL works seamlessly with our Cobalt, Cobalt Click, and Cobalt Shallow families providing a color-consistent and aesthetically identical package.



NLCBC-470  
4" Round

2700K 3000K 3500K 4000K

Adjusts up to 75°

COB LED technology  
2700K, 3000K, 3500K or 4000K

Field Changeable Optics  
Spot & narrow flood optics included



## COBALT ELBOW RETROFIT

4" Retrofit / 800 Lumens

One of the most flexible lighting tools on the market, the Cobalt Adjustable Elbow retrofit **rotates 358 degrees** horizontally and **adjusts 75 degrees** vertically. Available in round or square and multiple finishes, the Elbow produces **800 lumens at 90+ CRI** in various CCTs. Each Elbow **includes two field-changeable optics** for spot and narrow flood beam spreads.

Patent Nos. D877,390S; D824,568S; D797977S; D871,644S



## COBALT SHALLOW

Shallow Housing - only 2-5/8" tall!  
850 or 1250 lumens  
Square and Round Reflectors

Cobalt shallow series allows for installation in over crowded plenums in multi-family or shallow ceiling constructions, while still allowing for access to the driver from below the ceiling. The finished look and deep set optics performs and looks like a standard deep recessed downlight. Available in **850 and 1250 lumens at 90+ CRI** using the latest Cree COB technology, the Cobalt Shallow is the shallowest housing and LED module combination on the market.





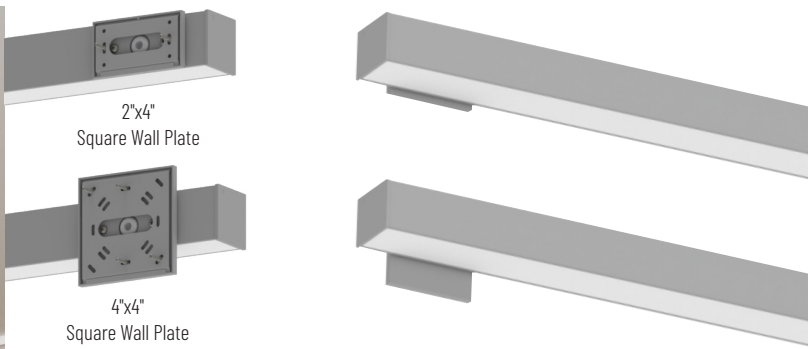
NLIN-210  
2' Linear

NLIN-L10  
L-Connector

NLIN-X10  
X-Connector

NLIN-T10  
T-Connector

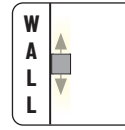
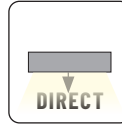
NLIN-810A  
8' L-Line Direct  
with  
NLIN-PCCA  
Pendant Kit



2"x4"  
Square Wall Plate

4"x4"  
Square Wall Plate

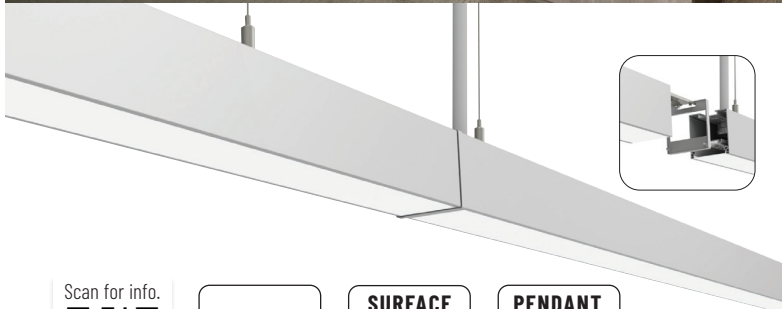
Scan for info.



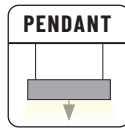
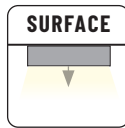
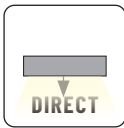
## NWLIN

Linear LED Wall Mount  
1050 lumens per foot  
2' to 8' linear lengths

L-Line LED wall mount luminaires maintain the same appearance as NLIN luminaires. Each luminaire includes a finished flange in white or aluminum finish. Maintaining the same internal components as NLIN, luminaires can be daisy chained up to 80'. Delivering **1050 lumens per foot** in dedicated CCT options (**3000K, 3500K or 4000K**). L-Line is ideal for commercial, retail, healthcare and education applications.



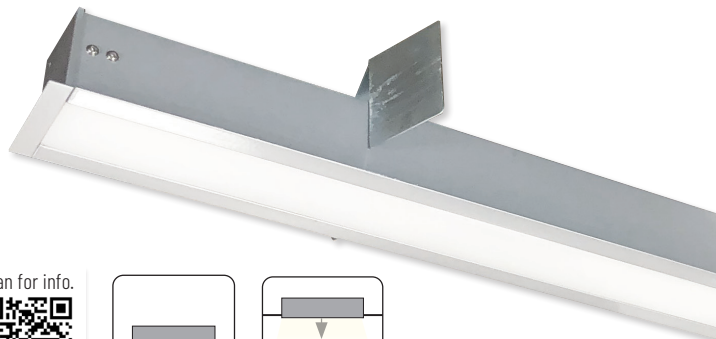
Scan for info.



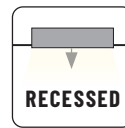
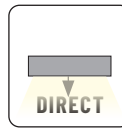
## NLIN / NLINSW

Linear LED Direct  
1050 lumens per foot  
X, L and T Luminous Connectors

L-Line Direct LED linear luminaires offer a clean and modern appearance with a sleek extruded aluminum housing. Symmetrical light distribution will evenly illuminate surfaces with a diffused lens, making the L-Line ideal for commercial, retail, healthcare and education applications. Delivering **1050 lumens per foot** in dedicated CCT or selectable CCT options (**3000K, 3500K or 4000K**). Internal quick connects allow systems to be connected with seamless luminous L, X or T connectors.



Scan for info.



## NRLIN

Linear LED Recessed Mount  
1050 lumens per foot  
2' to 8' linear lengths

L-Line LED recessed luminaires maintain the same appearance as NLIN luminaires. Each luminaire includes a finished flange in white or aluminum finish. Maintaining the same internal components as NLIN, luminaires can be daisy chained up to 80'. Delivering **1050 lumens per foot** in dedicated CCT options (**3000K, 3500K or 4000K**). L-Line is ideal for commercial, retail, healthcare and education applications.





**NLUD-4334W**  
4' L-Line Linear  
with  
**NLUD-4WMW**  
4' Wall Mount Kit

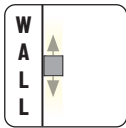
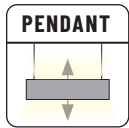
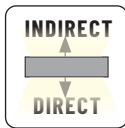
**NLUD-8334W**  
8' L-Line Linear  
with  
**NLUD-PCCW**  
Pendant Kit



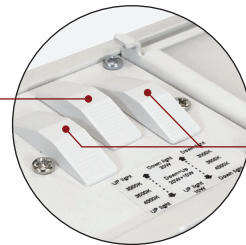
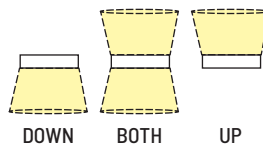
**New Options**  
Occupancy Sensor &  
Louver Accessories

Wall mount kits available in 2' to 8' lengths.

Scan for info.



**Selectable Direction**  
Up / Down / Both



**Selectable CCT**  
Three position sliding switch  
3000K / 3500K / 4000K  
Per Direction

# NLUD

Linear LED Indirect / Direct  
Selectable Direct & Selectable CCT  
Pendant or Wall Mounted

L-Line LED indirect / direct luminaires include three integral switches for direction of light and selectable color temperature per direction. Sleek extruded housing with symmetrical light distribution will evenly illuminate surfaces with a diffused lens. These pendant or wall mounted fixtures are ideal for commercial, retail, healthcare and education applications. Internal quick connects allow systems to be connected with seamless luminous L, X or T connectors



**NLUD-L334**  
L-Connector



**NLUD-T334**  
T-Connector



**NLUD-X334**  
X-Connector





Scan for info.

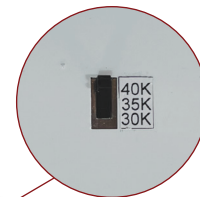


# STRIP LIGHT

4' and 8' Linear with Selectable CCT  
 3300lm (4') or 8000lm (8') · Emergency & Motion Sensor options

Industrial LED Tunable Strip Light includes an integral CCT switch to change the color temperature at any time! Ideal for commercial, residential, industrial and retail applications. Luminaire's lens is designed to evenly spread the light in a complete 120° beam pattern. The smooth lens makes for easy maintenance and no diode image. NLSTR can be used in storage or utility buildings, coves, display cases, workshops and garages for task and general lighting.

**Motion Sensor Option**  
 Now Available



**Selectable CCT**  
 Three position switch  
 3000K / 3500K / 4000K



**Optional Emergency**  
 Integral Test Switch  
 and Indicator Light

**NLSTR**  
 Strip Light





Scan for info.



# LED WRAPAROUND

Surface or Pendant Mounted  
Selectable Lumens & CCT

Industrial LED Wraparound L-Line LED Direct luminaires include two integral switches for lumen output and selectable color temperature. Ideal for commercial, residential, industrial, and retail applications, such as; stairwells, hallways, garages, schools, offices, and more. Easy to install and great for replacing outdated fluorescents with an energy efficient, cost saving alternative. The luminaire's lens is designed to uniformly spread and soften the appearance of the light while maximizing its distribution and output.



NLPSW-4334W  
4' Wraparound



**Selectable Lumens**

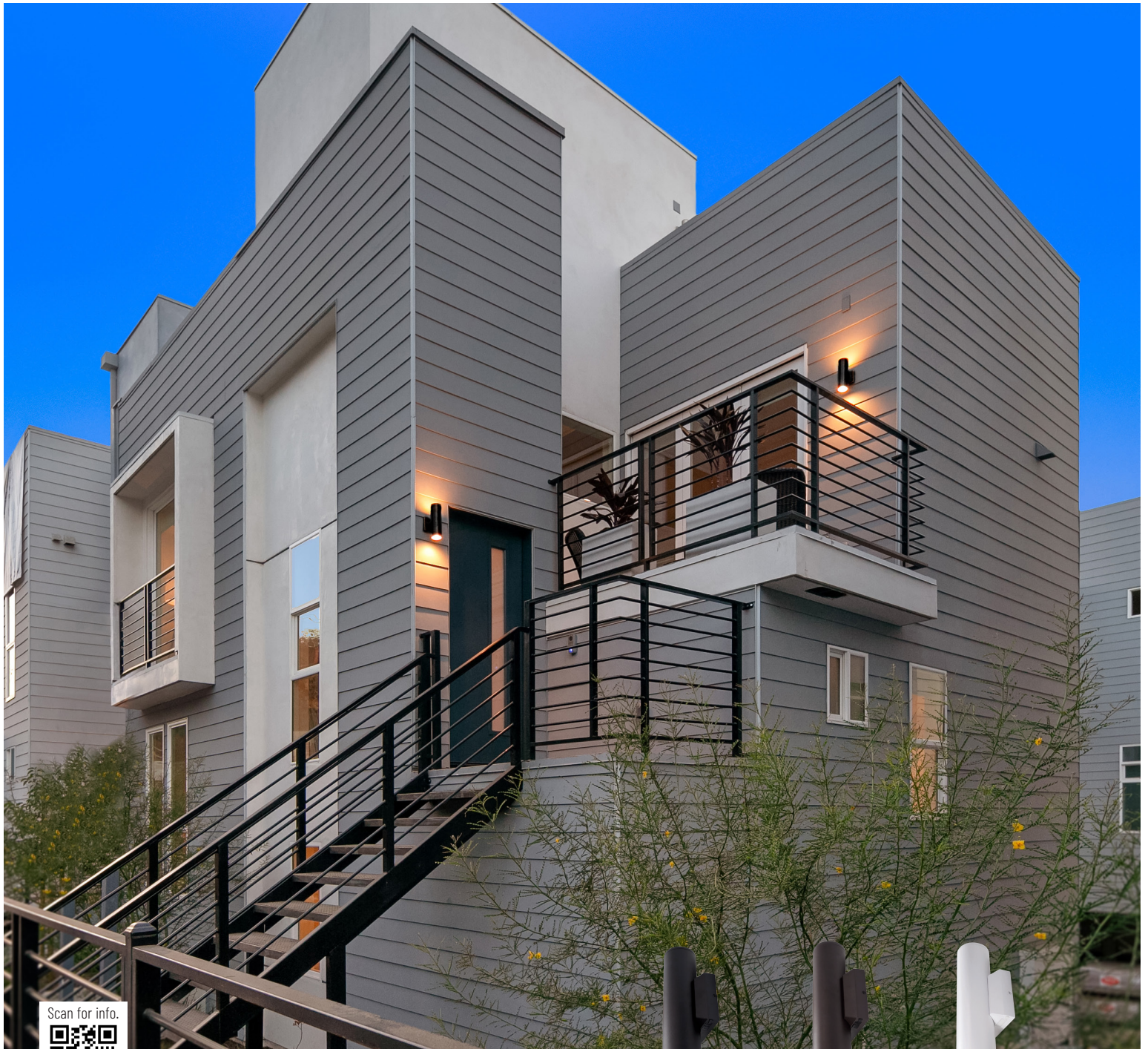
Three position sliding switch  
7000lm / 7500lm / 8000lm



**Selectable CCT**

Three position sliding switch  
3000K / 3500K / 4000K





Scan for info.



# WALL MOUNTED CYLINDER

Selectable Direction (Up / Down / Both)  
 Selectable CCT (3000K / 4000K / 5000K)

Architectural grade ADA compliant up-and-down wall mount cylinder with two dedicated COB LEDs mounted in the up and down position. Each cylinder includes two integral switches to change the direction of light and color temperature after installation. IP65 and wet location rated for most indoor and outdoor applications.



NYUD-3L1345B  
 Black Finish



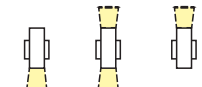
NYUD-3L1345BZ  
 Bronze Finish



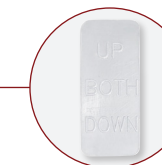
NYUD-3L1345MPW  
 Matte Powder White Finish



**Selectable CCT**  
 Three position switch  
 3000K / 4000K / 5000K



**Direction of Light**  
 Down / Both / Up





Scan for info.



# iLENE™ MINI CYLINDERS

Miniature 2", 3" or 5" Cylinders  
1000 to 2000 lumens  
Surface, Stem or Cable Mounted

iLENE LED Mini Cylinders consists of three sizes, multiple finishes and is offered in a surface, stem or cable mounted. Using Cree COB or Comfort Dim technology the cylinders produce 1000lm (2"), 1500lm (3") or 2000lm (5"). Each iLENE cylinder includes three field changeable optics for maximum design control. Optional accessories can further customize the fixtures.



**Sloped Canopy**  
allows for all wires to  
be enclosed in stem

Scan for info.



# 6" CYLINDERS

Surface, Stem, Cable or Wall Mounted  
Up to 3500 lumens • Dedicated or Selectable CCT  
New sloped stem assembly!

6" Cylinders are available in three different series: Sapphire II (up to 3500lm w/ specifiable beam spreads), Cobalt (up to 1000lm) and Medium Base Incandescent/LED. Each cylinder has four different mounting types for any application; Cable mounted includes 8' cable, Wall mount is Wet Location rated, Surface mounted or Stem mounted with new sloped canopy.





Scan for info.



# RLM SHADES

8", 10" or 16" · 1200lm to 3800lm  
Now available with Stem Mount option

Aluminum spun shades with built-in dimmable drives and LED COB technology provide excellent general illumination. The optics are set deep inside the shades for visual comfort while producing **up to 2200 lumen (8"), 3000 lumen (10") or 3800 lumens (16") at 90+ CRI**. Shades' exterior finishes include: white, black and gun metal with reflective white interior bowls. Color temperature include **3000K, 3500K and 4000K**, the shades are a perfect solution for retail, commercial, and hospitality applications.

**NRLM-8C**  
8" Shade  
Cable Mounted

**NRLM-10ST**  
10" Shade  
Stem Mounted



**NRLM-16C**  
16" Shade  
Cable Mounted



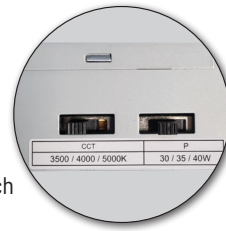


Backlit Panels



**Selectable CCT**

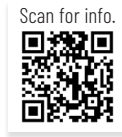
Three position sliding switch  
3500K / 4000K / 5000K



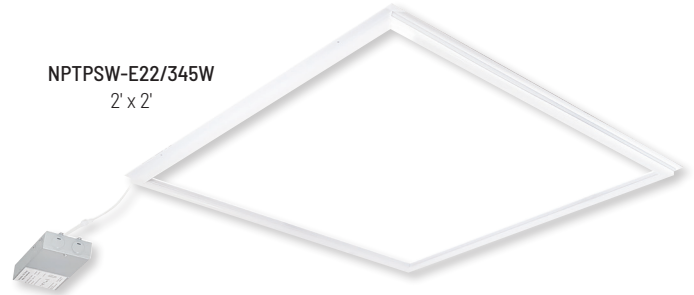
**Selectable Lumens**

Three position sliding switch  
3750lm / 4375lm / 5000lm

NPTPSW-E22/345W  
2' x 2'



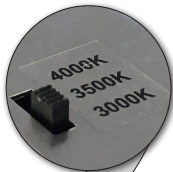
Scan for info.



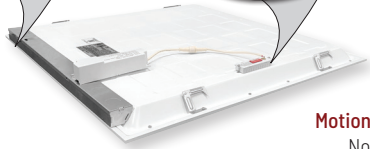
# LED FRAME LIGHT

2' x 2' T-Bar Grid  
Selectable CCT and Selectable Lumens  
3750 to 5000 lumens

LED Frame lights are a perimeter fixture for standard 2' x 2' ceiling grid. Existing ceiling grid will sit inside the frame light, not cutting required. Perfect solution for commercial applications such as conference rooms, libraries and offices. Luminaires include two **field selectable CCT switches** for color temperature and brightness. Universal input (120-277VAC) and dimmable with compatible 0-10V dimmers.



Scan for info.

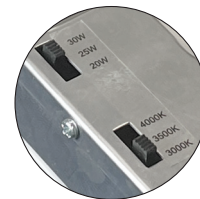


**Motion Sensor Option**  
Now Available



**Selectable Lumens**

Three position sliding switch



**Selectable CCT**

Three position sliding switch  
3000K / 4000K / 5000K

# BACKLIT PANELS

1' x 4', 2' x 2' and 2' x 4' Configurations  
Selectable CCT and Selectable Lumens  
2600 to 5700 lumens

LED Panels produce uniform, glare-free illumination in offices, conference rooms, libraries and other task areas where general illumination is desired. Backlit panels include a **field selectable CCT switch** which allows the luminaire to be switched (3000K / 3500K / 4000K) or **dedicated 5000K**. LED Panels are available in three sizes: **2' x 2'**, **1' x 4'** and **2' x 4'**, which can be installed in most grid ceilings. The panels are **universal input** and come in a range of **selectable** or **dedicated lumens**. Optional mounting accessories are available for surface mounting, recessed mounting into hard ceilings or pendant mounting. Emergency options are also available, along with **new surface mount kit for emergency**.



NPDBLSW-E22  
2' x 2'



NPDBLSW-E24  
2' x 4'



NPDBLSW-E14  
1' x 4'

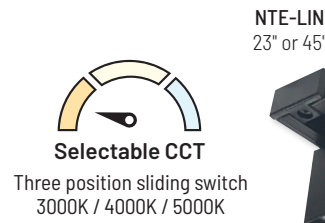


# T-LINE TRACK

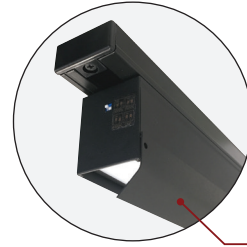


Linear Tunable White (Selectable CCT)  
23" / 1600lm or 45" / 3200lm  
Field Changeable Lenses & Accessories

T-Line is a unique LED linear track head with field changeable lenses to change the light distribution. Track heads are available in two lengths and lumen outputs: 1600lm (2') or 3200lm (4') for general illumination and combine it with directional track heads for a perfect solution to retailing or retrofitting existing track with energy efficient LED light. T-Line features a selectable CCT switch using dip switches in the end of each track head, which can be set at 3000K, 3500K or 4000K. T-Line comes standard with a frosted symmetrical lens, asymmetric lenses and visor are available for aisle lighting or directional lighting.



NTE-LIN  
23" or 45"



**Visor**  
Use with asymmetric lens for wall washing

# JASON TRACK

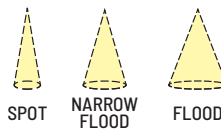


Dedicated CCT (3000K, 3500K or 4000K)  
1400lm, 2200lm or 2800lm

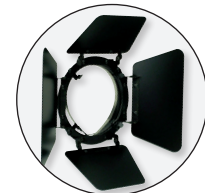
Jason LED Track heads features die-cast aluminum construction with an integral driver in a clean simple flat back cylinder style. The high lumen track head is available in **3000K, 3500K or 4000K @ 80 or 90 CRI**. Luminaires are specified in **spot, narrow flood or flood beam spread in three lumen outputs**. Jason Track Heads include a clear glass and accept a variety of accessories ranging from **barndoors, snoot, shield or louver**. Making this series ideal for retail and commercial applications where the specifier is looking for a minimal form and design. Jason's three lumen outputs use the same housing for a uniform look.



NTE-855



**Specifiable Beam Spreads**  
Spot, Narrow Flood and Flood



**Barn Door**  
and other accessories also available

# JASON PS TRACK



Selectable CCT (3000K / 3500K / 4000K)  
1450lm

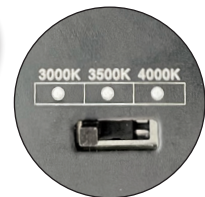
Jason PS LED track heads feature an integral color temperature switch, allowing the end user to change the color temperature. Luminaire delivers **1450 lumens** in three color temperatures (**3000K / 3500K / 4000K**) @ **90 CRI**. Track heads can be specified in **spot, narrow flood or flood beam spread** to create the ideal cone of light per application. Jason track heads include a clear glass and accept a variety of accessories ranging from **barndoors, snoot, shield or louver**. Making this series ideal for residential to commercial applications to compliment any space.



NTE-856  
1450lm

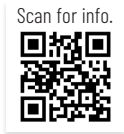


Three position sliding switch  
3000K / 4000K / 5000K



**Specifiable Beam Spreads**  
Spot, Narrow Flood and Flood

# MAC TRACK



AC LED – No Driver!  
800lm to 1250lm • Dedicated CCT or Comfort Dim  
Field Changeable Optics

MAC LED Track heads have an eclectic style to fit any decor. Luminaire features **COB LED technology** allowing for better optic control and include two **field changeable optics (spot or flood)**. MAC delivers **800 lumens** and MAC XL delivers **1250 lumens** in **2700K, 3000K, 3500K or 4000K** at 90+ CRI. **Comfort Dim (warm dimming)** option now available for MAC XL. AC LED allows for no driver to maintain a small appearance in **white, black or silver** finishes. Track adapters can be converted to J and L style adapters.



NTE-870  
MAC

NTE-875  
MAC XL



SPOT



FLOOD

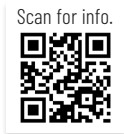
**Field Changeable Optics**  
Spot and Flood included



**Warm Dim Option**  
Certified to requirements of  
Title 24 JA8-2019



# MAY TRACK



AC LED – No Driver!  
850lm • Dedicated CCT or Comfort Dim

May LED Track heads offer clean, modern style for any application. Track heads feature AC LEDs that require no driver, allowing for minimalist appearance. May luminaires deliver up to **850 lumens** at **2700K, 3000K, 3500K or 4000K** @ 90 CRI. **Comfort Dim (warm dimming)** option warms the color temperature from **2900K to 1800K** as the fixture is dimmed. Track heads include a **narrow flood optic** and available in **black or white** finishes. May Track heads are certified to the high efficacy requirements of California Title 24 JA8-2019. Track adapters can be converted to J and L style adapters.



NTE-860  
800lm



**Warm Dim Option**  
Color temperature warms as  
luminaire is dimmed

# MAX TRACK



1000lm to 3650lm  
Dedicated CCT  
Three Sizes • Premium TIR optics

MAX LED Track heads features **COB LED technology** allowing for better optic control and **premium TIR optics (spot, narrow flood or flood)**. Track heads are available in three sizes and lumen outputs (**1000 to 3650 lumens**) in **2700K, 3000K or 4000K** at 90+ CRI. Cylindrical design allows is ideal for higher ceilings and commercial applications in **white, black or silver** finishes. Track adapters can be converted to J and L style adapters.



NTE-866  
MAX XL

NTE-865  
MAX

NTE-864  
MAX Mini



SPOT



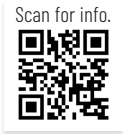
NARROW  
FLOOD



FLOOD

**Specifiable Beam Spreads**  
Spot, Narrow Flood and Flood  
(Note: NTE-864 includes narrow flood only)

# DIPPER WALL WASH / INDIRECT



Track Mounted or Monopoint  
8" / 1000lm or 12" / 2300lm

Dipper LED Track head spreads deliver an indirect light output in **two lengths** and lumen outputs. Each track head gives an even bright wash of light with no source brightness. The indirect LED uses a polished reflector to produce either **1000 lumens (8")** or **2300 lumens (12")** at **3000K, 3500K or 4000K**. Dipper luminaires are **also available as monopoint** without the need for a track system and **wall mounted** to create discrete, indirect up light. Dipper is excellent for **wall washing or indirect** light in retail, hospitality, office and commercial applications.

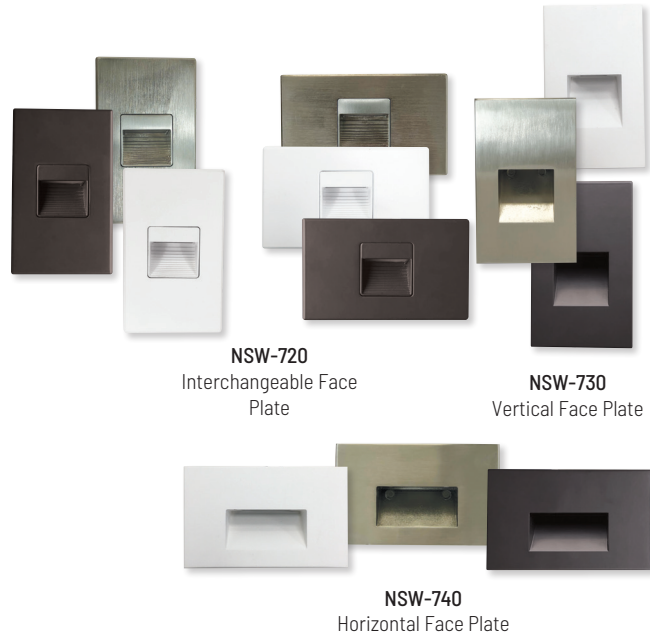


# ARI STEP LIGHTS



Vertical, Horizontal or Interchangeable Face Plate  
Now available in Deep Bronze!

The aesthetically pleasing 2.5W or 5W ARI LED step light directs light onto the surface below while shielding the LED source from view. Ari face plates include **vertical, horizontal or interchangeable face plate**, in **matte powder white, brushed nickel or deep bronze finish**. Available in **3000K or 4000K @ 90 CRI**. Long lasting, low maintenance, energy efficient LED step lights provide illumination for safety around steps, balcony areas, or walkways while saving over 80% in running costs when compared to 10W incandescent step lights.

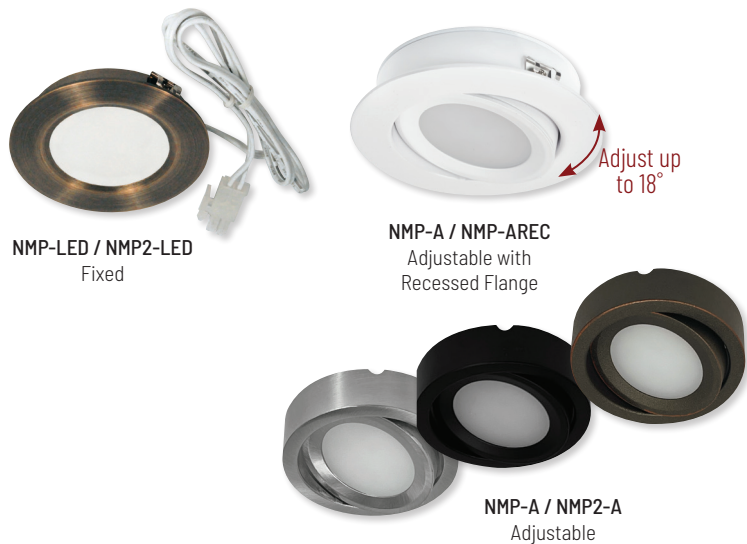


# JOSH LED PUCK



12V / 24V LED Puck Light  
Up to 300 lumens / 4.5W  
Now available in Adjustable!

Josh LED puck lights can be **surface or recessed mounted** with an included finished collar. 12V **Dimmable** LED luminaires produces up to **300 lumens** with **2700K, 3000K, 3500K or 4000K**. Each luminaire includes a frosted lens to eliminate hot spots generated by direct view LEDs, which reflects on surfaces. Josh is available in **black, bronze, brushed nickel or white** finishes.





### Selectable CCT

Three position sliding switch  
3000K / 4000K / 5000K



Adjust up  
to 90°

Scan for info.



NUDTW-98

## BRAVO FROST TW

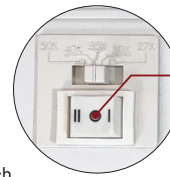
120V Tunable White (Selectable CCT)  
850 lumens per foot

Low profile Bravo FROST TW (Tunable White) LED linear luminaires offer a **diode image-free** solution for residential and commercial use. Less than 1" in depth, Bravo FROST TW fixtures can be installed under cabinets, within shelves/displays and architectural coves. Bravo FROST TW offers **850 lumens / 10W per foot** with a **selectable CCT switch** which can be set at **3000K, 3500K or 4000K**. Each fixture includes adjustable mounting brackets that adjust the luminaire up to 90° and **lengths range from 12" to 32"**. An encapsulated 120V dimmable LED driver in each unit allows extended runs and easier installation with **3-wire system**.



### Selectable CCT

Five position sliding switch  
27K / 30K / 35K / 40K / 50K



**3 Position Switch**  
Selectable Lumen Output  
and turns fixture On / Off

Scan for info.



NUDTW-88

## LEDUR TW

120V LED Undercabinet  
Selectable Lumen Output / Color Temperature  
5 CCT options and 2 Outputs in One Fixture!

LEDUR TW allows the end user to **select between five CCT options (27K / 30K / 35K / 40K / 50K) and two outputs (regular or high output) all in one luminaire!** Each undercabinet fixture includes two switches to control each option separately. **Lengths range from 11" to 42" in bronze or white finish.** Edge-lit LEDs **eliminates the diode image** and provides uniform reflectance of light without the hot spots generated by direct view mounted LEDs, which reflects in granite and other mirror-finish counter tops. LEDUR provides smooth, uniform light across the counter surface. Utilizing the same construction and easy installation with captive screws under removable cap. Completely **dimmable and linkable**, the LEDUR is a perfect solution for energy efficient lighting.

## NULS-LED

120V Dimmable LED Undercabinet  
525 lumens per foot

Scan for info.



NULS LED undercabinet produces over **525 lumens per foot** while consuming only **5W** and is available in **2700K, 3000K or 4000K**. 120V input voltage **eliminates the need for any drivers** and wattage concerns. Luminaires can be **connected together seamlessly** or with cable accessories. Each system can be **hardwired into a junction box and dimmed**. Ideal for under cabinet, in cabinet, cove, display, general commercial, retail and residential lighting applications.



NULS-LED

Scan for info.



**SMALL SIZE**  
**9-1/2" X 2-1/8"**

NATLED-5075HW

## ELV DRIVERS

12V or 24V output · 35W to 75W

Constant voltage drivers are available for **12V or 24V** under cabinet and linear systems. **Dimmable with electronic low voltage or Triac dimmers**. Each driver includes a **10' power line connector** and enclosure for cULus listing.

Scan for info.



## NEXUS®

LED Driver and Dimmer All-In-One  
120V input · 12V or 24V output



NATL-SWEX

Nora is proud to present the next generation of LED dimming with NEXUS, an all-in-one LED driver and dimmer. NEXUS eliminates compatibility issues by combining an **LED dimmer switch and power supply in one integrated unit**. NEXUS mounts in a standard in-wall switch box and fits a standard Decora switch plate. The unit is **available in 12V or 24V 60W and 24V 100W**, provides 100% to 5% dimming, converts 120V AC to DC low voltage. A white face plate is included, and an optional face plate kit with black, brown and almond plates are available. NEXUS is compatible with Nora LED Tape, LED Lightbar, LED Puck and LED Flex Lights.



Scan for info.



## 120V LIGHTBAR

210 lumens per foot · Variety of accessories  
Internal magnets and input/output connections

120V LED Lightbar creates an uniform seamless line of light, with internal magnets for easy installation. Producing up to 210 lumens per foot in 3000K, lightbar is a perfect solution for under cabinet, in cabinet, cove, display, and task applications. Variety of connectors and accessories allows luminaires to be connected together up to 36'.







NX-603D-LED

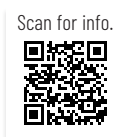
## LED EXIT SIGN

Dual Color LED Exit Sign with Battery Backup  
Selectable Color Switch (Red / Green)

Slim profile universal exit sign includes an **internal switch to change the color of LEDs** to red or green. Mounting hardware can be repositioned for wall, end or ceiling mount applications. Each luminaire includes an emergency battery to keep the exit sign illuminated for 90 minutes during a power outage.



LED Exit Sign  
RLM Shade



NE-700LEDRC

## DUAL HEAD

LED Emergency Light w/Remote Capability

Mini profile LED emergency light with remote capability and self diagnostics. Two adjustable 100lm heads include an extra 3.6V battery for 3W remote capabilities. Available in black or white.



NE-612LED

## COMPACT DUAL HEAD

LED Emergency Light

Available in standard, remote, remote HO styles and self diagnostic styles. ABS housing with UL 5VA flame rating. Quick snap together design for quick installation and matching remote heads are available in black or white.



NX-617

NEX-720

NE-970

## WET LOCATION

Exit & Emergency

Wet Location LED exit and emergency lights include self diagnostic tests with notification of any failures or malfunctions. Each exit sign includes an optional second face. Long lasting LED sources without maintenance for egress lighting where splashing, non-corrosive liquids and dripping may occur.



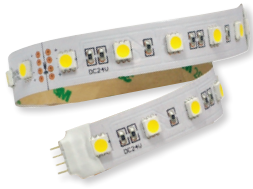
NE-921LED

## OUTDOOR EMERGENCY

General lighting with Photosensor

Outdoor emergency light with dual functions (general illumination and emergency lighting). During normal operation, the luminaire will operate with integral photosensor delivering 1250 lumens. During emergency operation, an internal battery will operate the luminaire for 90 minutes, delivering 400 lumens for egress illumination.

Scan for info.



# 11 TYPES OF TAPE LIGHT

Nora's expanding LED tape lights includes: 120V IP65, COB, Comfort Dim, Color Tuning CCT, RGBW, Side-Lit, High Output and more. Additional dimmable electronic constant voltage drivers complement our 12V and 24V systems.

1. IP65 RATED  
NUTP13 SERIES 120V · CUSTOM LENGTHS OR 150' ROLL  
330 LUMENS / 3.6W PER FOOT
2. COB HIGH OUTPUT  
NUTP14 SERIES 24V · 16.4' OR 100' ROLL  
450 LUMENS / 4.5W PER FOOT
3. COMFORT DIM  
NUTP12 SERIES 24V · 16' ROLL ONLY  
170 LUMENS / 2.7W PER FOOT
4. STANDARD (SILICONE ENCAPSULATED)  
NUTP1 SERIES 24V · NUTP4 SERIES 12V  
70 LUMENS / 1.5W PER FOOT
5. STANDARD (NON-ENCAPSULATED)  
NUTP7 SERIES 24V · 70 LUMENS / 1.5W PER FOOT
6. SIDE-LIT  
NUTP9 SERIES 24V · 70 LUMENS / 1.5W PER FOOT
7. HY-BRITE  
NUTP5 SERIES 24V · 200 LUMENS / 2.7W PER FOOT
8. HIGH OUTPUT  
NUTP8 SERIES 24V · 350 LUMENS / 4.1W PER FOOT
9. RGB COLOR CHANGING  
NUTP3 SERIES 24V · NUTP6 SERIES 12V
10. RGBW COLOR CHANGING + WHITE  
NUTP11 SERIES 24V · SEPARATE 30K DIODE
11. CCT COLOR TUNING  
NUTP10 SERIES 24V · 2500K TO 4500K

Surge Protection  
Now Available

Scan for info.



NUTP13

# 120V IP65 TAPE LIGHT

Hardwired or Cord & Plug · Factory installed connectors  
330 lumens per foot

IP65 rated LED Tape Light is perfect solution for indoor or outdoor applications without the need for LED drivers. Producing **330 lumens per foot** at **2700K, 3000K or 4000K @ 90+ CRI**. Tape is specified per length and factory installed with cord and plug or hardwired with TRIAC dimming. 120V input voltage **eliminates the need for any drivers** and wattage concerns.

NUTP71



NUTP51



Scan for info.



NUTP81



# CONTINUOUS ROLLS

LED Tape Light with Flip Connectors

100' or 20' spools of continuous LED tape are available in:

- Standard Damp Label - NUTP71  
1.5W / 80lm per foot
- Hy-Brite Damp Label - NUTP51  
2.7W / 210lm per foot
- High Output Damp Label - NUTP81  
4.1W / 310lm per foot



Flip Connectors

## NEW FINISHES



# ALUMINUM CHANNELS

LED Tape Light Channels

Variety of aluminum Channels for the LED Tape lights can be used to hold the tape in visible applications or can be used to hide or conceal the tape in other applications. Offered in 4' shallow and deep sizes, **three finishes**, with or without wings the channels are field cuttable. The unique "J" shape can be used to conceal tape in an under cabinet, book case or framing application. The "J" can even create an instant cove for accent lighting. Use the deep channel with wings to mount in a cabinet or wall to create visual interest or a small, slim line of usable light. Channels without wings are now available in black and white finishes.



Scan for info.



NUTP14

Cuttable every  
1.79" at marked  
intervals

Tape Width: 0.39"  
Tape Depth: 0.8"  
Lengths: 16.4' Roll

# HIGH OUTPUT COB TAPE LIGHT

24V input • 16.4' or 100' Rolls  
450 lumens per foot

COB LED Tape Light creates an uniform seamless line of light, without the need for additional diffused covers or accessories. Producing over **450 lumens per foot** at **2700K, 3000K, 3500K or 4000K @ 90+ CRI**. Tape light is a perfect solution for low clearance or reflective surfaces to eliminate all glare or dotting.



NATL2-C29W  
Trimless Channel  
for Tape Lights





**NORA LIGHTING, INC.**  
6505 Gayhart St.  
Commerce, CA 90040  
TEL 323.767.2600  
FAX 323.722.3677  
[www.NoraLighting.com](http://www.NoraLighting.com)

**DOMESTIC FACILITIES:**  
Atlanta, GA  
Cincinnati, OH  
Dallas, TX  
Detroit, MI  
Edison, NJ  
Los Angeles, CA  
Louisville, KY  
Minneapolis, MN  
Nashville, TN

**INTERNATIONAL SALES:**  
6505 Gayhart St.  
Commerce, CA 90040  
TEL 323.767.2600  
FAX 323.722.3677

The products shown in this catalog are covered by USA and International patents. Specifications subject to change without notice.

© Copyright 2024 Nora Lighting, Inc. All rights reserved

6M ML-NPRODG0124