

### PRODUCT DESCRIPTION

LED flush mount disk lights are designed for installation over junction boxes from below the ceiling. Surface mount downlights are available in Dedicated 3000K or Five Selectable CCTs. Low profile luminaires are perfect solution for closets, storage areas, attics and basements.

### FEATURES

- AC LED (No Driver)
- Dedicated 3000K or Five Selectable CCT (2700K/3000K/3500K/4000K/5000K)
- Quick installation and cost savings
- Mounts on standard junction boxes
- cETLus Listed for Wet Locations
- 5-year limited warranty

### SPECIFICATION

**Construction:** One piece aluminum die formed housing and trim. Aluminum body dissipates heat and extends life.

**Mounting:** Surface mount luminaire is compatible with 3" or 4" junction boxes and 1/2" deep pancake boxes for ceiling or wall mount applications.

**Ratings:** IC rated when used with a 4" electrical junction box rated for direct contact with insulation. Fire rated when used with a fire rated junction box.

### ELECTRICAL

**Voltage:** 120VAC

**Lumens / Wattage:** 1200lm / 16W

**Color Temperature:** Dedicated (3000K) or Five Selectable CCTs (2700K / 3000K / 3500K / 4000K / 5000K: Preset to 3000K)

**Color Rendering Index:** 90+ CRI

**Beam Spread:** 112° Wide Flood

**Operating Temperature:** 0°C to 35°C ambient temperature

**Lifetime:** 50,000 hours @ L70

**Dimming:** Triac or ELV

[Click Here](#) or check complete dimmer list at [www.NoraLighting.com](http://www.NoraLighting.com) in the "Compatibility" page under "Resources" tab

### LABELS AND LISTINGS

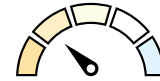
- cETLus Listed for Wet locations
- Certified to the high efficacy requirements of California Title 24 JA8-2022
- [5-Year Limited Warranty](#)
- FCC Compliant



### Performance Data

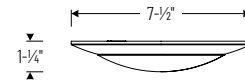
| Part Number | Dedicated | Selectable | CCT   |
|-------------|-----------|------------|-------|
| NCS-D-R6    | -         | 1134lm     | 2700K |
| NCS-D-R6    | 1213lm    | 1189lm     | 3000K |
| NCS-D-R6    | -         | 1270lm     | 3500K |
| NCS-D-R6    | -         | 1259lm     | 4000K |
| NCS-D-R6    | -         | 1181lm     | 5000K |

### PRODUCT IMAGES AND DIMENSIONS

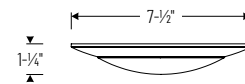


#### Selectable CCT

Five position sliding switch  
27K / 30K / 35K / 40K / 50K



**NCS-D-R6TWPW**  
6" Disk Light with Selectable CCT



**NCS-D-R630MPW**  
6" Disk Light with Dedicated CCT



**SOLD IN PACKS OF 12**

| CATALOG NUMBER | UPC          | CASE QTY. | DESCRIPTION  | LUMENS / WATTAGE | PALLET QTY. |
|----------------|--------------|-----------|--|------------------|-------------|
| NCS-D-R630MPW  | 732180816897 | 12 PCS.   | 6" LED Flush Mount Disk Light with Dedicated 3000K CCT | 1200lm / 16W     | XX          |
| NCS-D-R6TWPW   | 732180816880 | 12 PCS.   | 6" LED Flush Mount Disk Light with Selectable CCT      | 1200lm / 16W     | XX          |

Example: **NCS-D-R6TWPW** = 6" LED Flush Mount Disk Light, Selectable CCT, Matte Powder White Finish (Bulk Pack: 12 Pieces)

# PHOTOMETRICS

## 6" LED Flush Mount Disk Light with Selectable CCT Contractor Series

Type

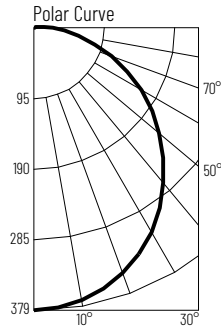
Project

Catalog No.

Notes

### Test Information

Test Number: NTR2331R1  
Part Number: NCSD-R6TWMPW  
Beam Spread: 112° Wide Flood  
Lumens: 1134lm  
Wattage: 14.96W  
Efficacy: 76lpw  
CCT / CRI: 2700K / 90 CRI  
Spacing Criteria (0°-180°): 1.24  
Spacing Criteria (90°-270°): 1.24



### Illuminance at a Distance

| Distance from Luminaire | FC at Nadir | Beam Diameter |
|-------------------------|-------------|---------------|
| 4'                      | 23.7fc      | 11'-10"       |
| 6'                      | 10.5fc      | 17'-8"        |
| 8'                      | 5.9fc       | 23'-7"        |
| 10'                     | 3.8fc       | 29'-6"        |
| 12'                     | 2.6fc       | 35'-5"        |

### Zonal Lumen Summary

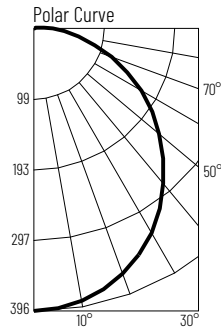
| Zone   | Lumens | % Luminaire |
|--------|--------|-------------|
| 0-30   | 293    | 25.8        |
| 0-40   | 478    | 42.1        |
| 0-60   | 842    | 74.2        |
| 0-90   | 1114   | 98.2        |
| 90-180 | 20     | 1.8         |
| 0-180  | 1134   | 100         |

### Candela Table

| Vertical Angles | Candela |
|-----------------|---------|
| 0               | 379     |
| 5               | 377     |
| 15              | 363     |
| 25              | 335     |
| 35              | 295     |
| 45              | 246     |

### Test Information

Test Number: NTR2332R1  
Part Number: NCSC-R6TWMPW  
Beam Spread: 112° Wide Flood  
Lumens: 1189lm  
Wattage: 15.06W  
Efficacy: 79lpw  
CCT / CRI: 3000K / 90 CRI  
Spacing Criteria (0°-180°): 1.26  
Spacing Criteria (90°-270°): 1.26



### Illuminance at a Distance

| Distance from Luminaire | FC at Nadir | Beam Diameter |
|-------------------------|-------------|---------------|
| 4'                      | 24.8fc      | 11'-11"       |
| 6'                      | 11fc        | 17'-10"       |
| 8'                      | 6.2fc       | 23'-10"       |
| 10'                     | 4fc         | 29'-8"        |
| 12'                     | 2.8fc       | 35'-8"        |

### Zonal Lumen Summary

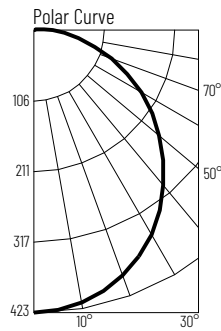
| Zone   | Lumens | % Luminaire |
|--------|--------|-------------|
| 0-30   | 306    | 25.7        |
| 0-40   | 500    | 42          |
| 0-60   | 881    | 74.1        |
| 0-90   | 1168   | 98.2        |
| 90-180 | 0      | 0           |
| 0-180  | 1189   | 100         |

### Candela Table

| Vertical Angles | Candela |
|-----------------|---------|
| 0               | 396     |
| 5               | 395     |
| 15              | 380     |
| 25              | 352     |
| 35              | 310     |
| 45              | 259     |

### Test Information

Test Number: NTR2333R1  
Part Number: NCSC-R6TWMPW  
Beam Spread: 112° Wide Flood  
Lumens: 1270lm  
Wattage: 15.42W  
Efficacy: 82lpw  
CCT / CRI: 3500K / 90 CRI  
Spacing Criteria (0°-180°): 1.26  
Spacing Criteria (90°-270°): 1.26



### Illuminance at a Distance

| Distance from Luminaire | FC at Nadir | Beam Diameter |
|-------------------------|-------------|---------------|
| 4'                      | 26.4fc      | 11'-10"       |
| 6'                      | 11.7fc      | 17'-10"       |
| 8'                      | 6.6fc       | 23'-8"        |
| 10'                     | 4.2fc       | 29'-7"        |
| 12'                     | 2.9fc       | 35'-6"        |

### Zonal Lumen Summary

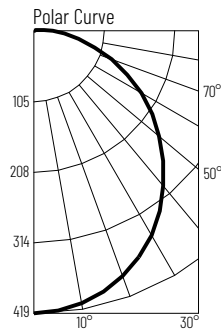
| Zone   | Lumens | % Luminaire |
|--------|--------|-------------|
| 0-30   | 327    | 25.7        |
| 0-40   | 533    | 42          |
| 0-60   | 941    | 74.1        |
| 0-90   | 1247   | 98.2        |
| 90-180 | 23     | 1.8         |
| 0-180  | 1270   | 100         |

### Candela Table

| Vertical Angles | Candela |
|-----------------|---------|
| 0               | 423     |
| 5               | 421     |
| 15              | 405     |
| 25              | 375     |
| 35              | 330     |
| 45              | 276     |

### Test Information

Test Number: NTR2334R1  
Part Number: NCSC-R6TWMPW  
Beam Spread: 112° Wide Flood  
Lumens: 1259lm  
Wattage: 15.25W  
Efficacy: 83lpw  
CCT / CRI: 4000K / 90 CRI  
Spacing Criteria (0°-180°): 1.26  
Spacing Criteria (90°-270°): 1.26



### Illuminance at a Distance

| Distance from Luminaire | FC at Nadir | Beam Diameter |
|-------------------------|-------------|---------------|
| 4'                      | 26.2fc      | 11'-10"       |
| 6'                      | 11.6fc      | 17'-8"        |
| 8'                      | 6.5fc       | 23'-7"        |
| 10'                     | 4.2fc       | 29'-5"        |
| 12'                     | 2.9fc       | 35'-4"        |

### Zonal Lumen Summary

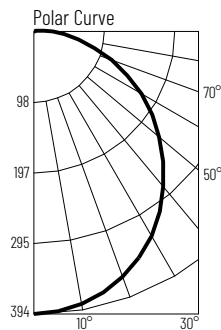
| Zone   | Lumens | % Luminaire |
|--------|--------|-------------|
| 0-30   | 324    | 25.7        |
| 0-40   | 528    | 42          |
| 0-60   | 932    | 74.1        |
| 0-90   | 1236   | 98.2        |
| 90-180 | 23     | 1.8         |
| 0-180  | 1259   | 100         |

### Candela Table

| Vertical Angles | Candela |
|-----------------|---------|
| 0               | 419     |
| 5               | 416     |
| 15              | 400     |
| 25              | 371     |
| 35              | 327     |
| 45              | 274     |

### Test Information

Test Number: NTR2335R1  
Part Number: NCSC-R6TWMPW  
Beam Spread: 112° Wide Flood  
Lumens: 1181lm  
Wattage: 15.02W  
Efficacy: 79lpw  
CCT / CRI: 5000K / 90 CRI  
Spacing Criteria (0°-180°): 1.26  
Spacing Criteria (90°-270°): 1.26



### Illuminance at a Distance

| Distance from Luminaire | FC at Nadir | Beam Diameter |
|-------------------------|-------------|---------------|
| 4'                      | 24.6fc      | 11'-8"        |
| 6'                      | 10.9fc      | 17'-7"        |
| 8'                      | 6.1fc       | 23'-6"        |
| 10'                     | 3.9fc       | 29'-4"        |
| 12'                     | 2.7fc       | 35'-2"        |

### Zonal Lumen Summary

| Zone   | Lumens | % Luminaire |
|--------|--------|-------------|
| 0-30   | 304    | 25.7        |
| 0-40   | 496    | 42          |
| 0-60   | 875    | 74.1        |
| 0-90   | 1160   | 98.2        |
| 90-180 | 21     | 1.8         |
| 0-180  | 1181   | 100         |

### Candela Table

| Vertical Angles | Candela |
|-----------------|---------|
| 0               | 393     |
| 5               | 391     |
| 15              | 375     |
| 25              | 348     |
| 35              | 306     |
| 45              | 256     |

# PHOTOMETRICS

## 6" LED Flush Mount Disk Light with Dedicated 3000K Contractor Series

Type \_\_\_\_\_

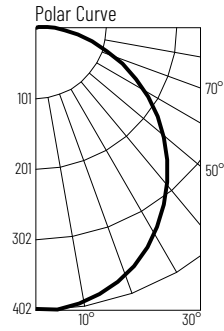
Project \_\_\_\_\_

Catalog No. \_\_\_\_\_

Notes \_\_\_\_\_

### Test Information

Test Number: NTR2336R1  
 Part Number: NCS-D-R630MPW  
 Beam Spread: 112° Wide Flood  
 Lumens: 1213lm  
 Wattage: 15.58W  
 Efficacy: 78lpw  
 CCT / CRI: 3000K / 90 CRI  
 Spacing Criteria (0°-180°): 1.26  
 Spacing Criteria (90°-270°): 1.26



### Illuminance at a Distance

| Distance from Luminaire | FC at Nadir | Beam Diameter |
|-------------------------|-------------|---------------|
| 4'                      | 25fc        | 11'-11"       |
| 6'                      | 11.1fc      | 17'-11"       |
| 8'                      | 6.3fc       | 23'-10"       |
| 10'                     | 4fc         | 29'-10"       |
| 12'                     | 2.8fc       | 35'-8"        |

### Zonal Lumen Summary

| Zone   | Lumens | % Luminaire |
|--------|--------|-------------|
| 0-30   | 256    | 21.1        |
| 0-40   | 426    | 35.1        |
| 0-60   | 870    | 71.7        |
| 0-90   | 1191   | 98.1        |
| 90-180 | 23     | 1.9         |
| 0-180  | 1213   | 100         |

### Candela Table

| Vertical Angles | Candela |
|-----------------|---------|
| 0               | 400     |
| 5               | 398     |
| 15              | 383     |
| 25              | 355     |
| 35              | 314     |
| 45              | 263     |