

# NPRLV-4SG

## 4" Pearl 12VAC Low Voltage LED Square Adjustable Gimbal Retrofit

Source: 11W LED  
1050lm

Type
Project
Catalog No.
Notes

### PRODUCT DESCRIPTION

Pearl low voltage retrofit series is cULus classified for use in existing IC or Non-IC housings manufactured by Nora and others. The 4" retrofit luminaires deliver up to 1050 lumens with die-cast adjustable gimbal to aim the light source in desired direction.

### FEATURES

- Comfort Dim (warm dimming) is available in 600lm only
- 2700K, 3000K, 3500K, 4000K @ 90+ CRI
- Field changeable optics included (Spot, Narrow Flood and Flood - installed)
- Integral dimmable driver
- 5-year limited warranty
- cULus classified for damp locations

### SPECIFICATION

**Construction:** Trims are constructed of heat dissipating, die-cast aluminum. The aluminum die-cast LED heat sink is threaded to fit the trim and transfer heat.

**Mounting:** Luminaire includes friction blades to mount securely to housing.

### OPTICS

Three field changeable optics (spot, narrow flood and flood) are included with each LED module. Premium 22° and 26° TIR optics are also available.

### ELECTRICAL

**Input Voltage:** 12VAC 60Hz

**Socket:** GU5.3

**Lumens / Wattage:** 1050lm / 11W (600lm w/ Comfort Dim)

**Color Temperature:** 2700K, 3000K, 3500K, 4000K

**Color Rendering Index:** 90+ CRI

**Beam Spread:** 26° Spot, 35° Narrow Flood, 54° Flood

**Operating Temperature:** 0°C to 25°C

**Lifetime:** 50,000 hours @ L70

**Comfort Dim:** Comfort Dim color tunes the temperature from a bright 3100K, to a romantic and comfortable 2000K on a gradual, even curve. Available in 600lm only.

**Dimming:** Triac (leading edge) or ELV (trailing edge)

[Click Here](#) or check complete dimmer list at

[www.NoraLighting.com](http://www.NoraLighting.com) in the "Compatibility" page under "Resources" tab

### COMPATIBLE HOUSINGS

Pearl retrofits are compatible with 4" IC and Non-IC housings by Nora and others.

- [NLIC-401](#) 4" IC Air-Tight Double Wall New Construction
- [NLIC-402](#) 4" Shallow ICAT Double Wall New Construction
- [NL-401](#) 4" Non-IC New Construction
- [NL-402S](#) 4" Shallow Non-IC New Construction
- [NLR-404](#) 4" Non-IC Remodel
- [NLR-403S](#) 4" Shallow Non-IC Remodel

**Accessories:** Luminaires can accommodate (1) hex louver and (1) translucent deco collar or opaque snoot, no accessory holder is required, see accessories page.

### LABELS AND LISTINGS

- cULus classified for Damp Locations
- RoHS compliant
- [5-Year Limited Warranty](#)
- Certified to the high efficacy requirements of California Title 24 JA8-2022

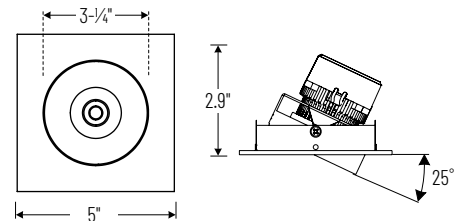


### Performance Data

Part Number	Lumens	CCT	Optic
<b>NPRLV-4SG40XWW</b>	1052lm	4000K	Spot
<b>NPRLV-4SG40XWW</b>	1031lm	4000K	Narrow
<b>NPRLV-4SG40XWW</b>	1005lm	4000K	Flood

Delivered lumens will vary depending on CCT, optic and finish

### PRODUCT IMAGES & DIMENSIONS



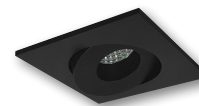
### NPRLV-4SG

Square Adjustable Gimbal

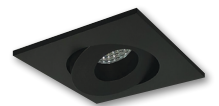
Adjustability:

Standard Housings: 25°

Shallow Housings: 10°



**BB**  
Black



**BZ**  
Bronze



**MPW**  
Matte Powder White



**NN**  
Natural Metal



**WW**  
White

## 4" Pearl 12VAC Low Voltage LED Square Adjustable Gimbal Retrofit

Color Temperature	Finish
<b>NPRLV-4SG27X</b> =2700K	<b>BB</b> = Black
<b>NPRLV-4SG30X</b> =3000K	<b>BZ</b> = Bronze
<b>NPRLV-4SG35X</b> =3500K	<b>MPW</b> = Matte Powder White
<b>NPRLV-4SG40X</b> =4000K	<b>NN</b> = Natural Metal
<b>NPRLV-4SGCDX</b> =Comfort Dim	<b>WW</b> = White

Example: **NPRLV-4SG27XWW** = 4" Pearl 12VAC Low Voltage LED Square Adjustable Gimbal Retrofit, 2700K, White finish

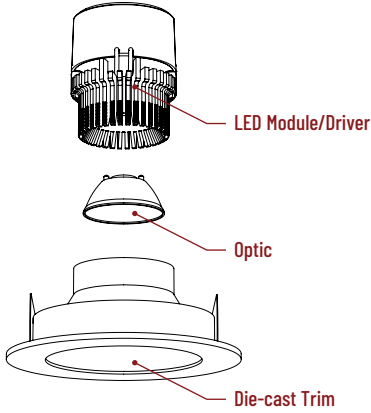
# Pearl Accessories

## 4" Pearl 12VAC Low Voltage LED Square Adjustable Gimbal Retrofit

Type
Project
Catalog No.
Notes

### FIELD CHANGEABLE OPTICS

Pearl luminaires include spot, narrow flood and flood optics. Optics can be changed in the field by removing LED module from die-cast trim. Replacement optics include an optional frosted lens. **Note:** Premium TIR optics are not compatible with Comfort Dim LED modules.



Frosted Optics

NIO-REFL38FR 60° Optic  
 NIO-REFL60FR 73° Optic

Replaces optics that are included with each LED module.



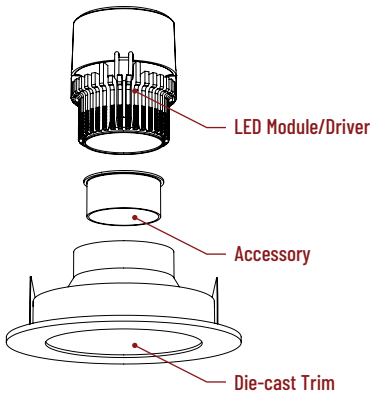
Premium TIR Optics

NIO-REFLTIR15 22° Optic  
 NIO-REFLTIR25 26° Optic

Premium TIR (total internal reflection) optics create optimal spot and narrow flood beam spread.  
**Not compatible with Comfort Dim (CDX) LED module**

### ACCESSORIES

Pearl accessories can be added at any point in the design process. Accessories easily install between LED module and die-cast trim. Luminaire will accommodate (1) hex louver and (1) collar accessory, no accessory holder required.



Translucent Decorative Collar

NIO-AS14(color) 5/8" length  
 NIO-AS19(color) 3/4" length  
 NIO-AS26(color) 1" length  
**Color:**  
 AM (amber), BLU (blue), FR (frosted), R (red)

Translucent collars color the aperture with the specified color while producing white general light. Collars are available in different lengths. Use to add interest, create a theme, match a theme or define a space.



Opaque Collar Snoot

NIO-AS14(color) 5/8" length  
 NIO-AS19(color) 3/4" length  
 NIO-AS26(color) 1" length  
**Color:**  
 MPW (matte powder white), WH (white)

Opaque snoot greatly reduces aperture brightness while preserving light output.



Hex Cell Louver

NIO-HC Black  
 Hex cell louver subtly reduces aperture brightness by reducing light output by about 20%.

Hex cell louver is not compatible with TIR optics.

# PHOTOMETRICS

## 4" Pearl 12VAC Low Voltage LED Square Adjustable Gimbal Retrofit

Type

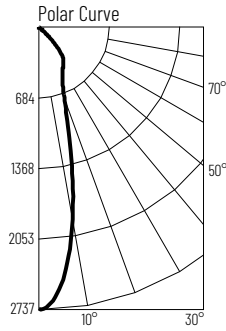
Project

Catalog No.

Notes

### Test Information

Test Number: NTR2240R1  
 Part Number: NPRLV-4SG40XWW  
 Beam Spread: 26° Spot  
 Lumens: 1052lm  
 Wattage: 10.86W  
 Efficacy: 97pw  
 CCT / CRI: 4000K / 90 CRI  
 Spacing Criteria (0°-180°): 0.44  
 Spacing Criteria (90°-270°): 0.44



### Illuminance at a Distance

Distance from Luminaire	FC at Nadir	Beam Diameter
4'	171fc	1'-10"
6'	76fc	2'-8"
8'	42.8fc	3'-7"
10'	27.4fc	4'-6"
12'	19fc	5'-5"

### Zonal Lumen Summary

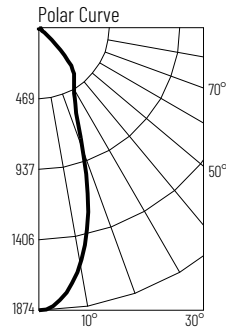
Zone	Lumens	% Luminaire
0-30	760	72.2
0-40	871	82.8
0-60	977	92.9
0-90	1052	100
90-180	0	0
0-180	1052	100

### Candela Table

Vertical Angles	Candela
0	2737
5	2436
15	1078
25	529
35	153
45	72

### Test Information

Test Number: NTR2241R1  
 Part Number: NPRLV-4SG40XWW  
 Beam Spread: 35° Narrow Flood  
 Lumens: 1031lm  
 Wattage: 10.86W  
 Efficacy: 95pw  
 CCT / CRI: 4000K / 90 CRI  
 Spacing Criteria (0°-180°): 0.58  
 Spacing Criteria (90°-270°): 0.58



### Illuminance at a Distance

Distance from Luminaire	FC at Nadir	Beam Diameter
4'	117fc	2'-6"
6'	52.1fc	3'-10"
8'	29.3fc	5'
10'	18.7fc	6'-4"
12'	13fc	7'-6"

### Zonal Lumen Summary

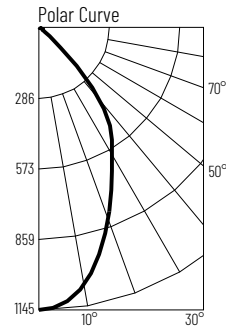
Zone	Lumens	% Luminaire
0-30	724	70.2
0-40	839	81.4
0-60	950	92.1
0-90	1031	100
90-180	0	0
0-180	1031	100

### Candela Table

Vertical Angles	Candela
0	1874
5	1775
15	1098
25	558
35	158
45	73

### Test Information

Test Number: NTR2242R1  
 Part Number: NPRLV-4SG40XWW  
 Beam Spread: 54° Flood  
 Lumens: 1005lm  
 Wattage: 10.86W  
 Efficacy: 93pw  
 CCT / CRI: 4000K / 90 CRI  
 Spacing Criteria (0°-180°): 0.82  
 Spacing Criteria (90°-270°): 0.82



### Illuminance at a Distance

Distance from Luminaire	FC at Nadir	Beam Diameter
4'	71.6fc	4'-1"
6'	31.8fc	6'-1"
8'	17.9fc	8'-2"
10'	11.5fc	10'-2"
12'	8fc	12'-4"

### Zonal Lumen Summary

Zone	Lumens	% Luminaire
0-30	638	63.5
0-40	799	79.5
0-60	921	91.6
0-90	1005	100
90-180	0	0
0-180	1005	100

### Candela Table

Vertical Angles	Candela
0	1145
5	1111
15	889
25	652
35	234
45	81