

NPRLV-4SNDC

4" Pearl 12VAC Low Voltage LED Square Retrofit Reflector with Round Aperture

Source: 11W LED
1150lm

Type

Project

Catalog No.

Notes

PRODUCT DESCRIPTION

Pearl low voltage retrofit series is cULus classified for use in existing IC or Non-IC housings manufactured by Nora and others. The 4" retrofit luminaires deliver over 1150 lumens with deep regressed cone reflector for optimal visual cut-off.

FEATURES

- Comfort Dim (warm dimming) is available in 700lm only
- 2700K, 3000K, 3500K, 4000K @ 90+ CRI
- Field changeable optics included (Spot, Narrow Flood and Flood - installed)
- Integral dimmable driver
- 5-year limited warranty
- cULus classified for wet locations

SPECIFICATION

Construction: Trims are constructed of heat dissipating, die-cast aluminum. The aluminum die-cast LED heat sink is threaded to fit the trim and transfer heat.

Mounting: Luminaire includes friction blades to mount securely to housing.

OPTICS

Three field changeable optics (spot, narrow flood and flood) are included with each LED module. Premium 22° and 26° TIR optics are also available.

ELECTRICAL

Input Voltage: 12VAC 60Hz

Socket: GU5.3

Lumens / Wattage: 1150lm / 11W (700lm w/ Comfort Dim)

Color Temperature: 2700K, 3000K, 3500K, 4000K

Color Rendering Index: 90+ CRI

Beam Spread: 28° Spot, 40° Narrow Flood, 62° Flood

Operating Temperature: 0°C to 25°C

Lifetime: 50,000 hours @ L70

Comfort Dim: Comfort Dim color tunes the temperature from a bright 3100K, to a romantic and comfortable 2000K on a gradual, even curve. Available in 700lm only.

Dimming: Triac (leading edge) or ELV (trailing edge)

[Click Here](#) or check complete dimmer list at

www.NoraLighting.com in the "Compatibility" page under "Resources" tab

COMPATIBLE HOUSINGS

Pearl retrofits are compatible with 4" IC and Non-IC housings by Nora and others.

[NLIC-401](#) 4" IC Air-Tight Double Wall New Construction

[NL-401](#) 4" Non-IC New Construction

[NLR-404](#) 4" Non-IC Remodel

Accessories: Luminaires can accommodate (1) hex louver and (1) translucent deco collar or opaque snoot, no accessory holder is required, see accessories page.

LABELS AND LISTINGS

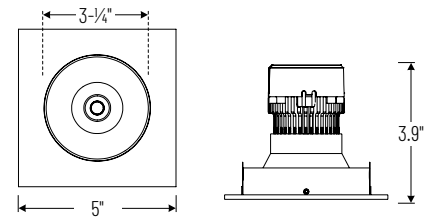
- cULus classified for Wet Locations
- RoHS compliant
- [5-Year Limited Warranty](#)
- Certified to the high efficacy requirements of California Title 24 JA8-2022



Performance Data			
Part Number	Lumens	CCT	Optic
NPRLV-4RND40XWW	1161lm	4000K	Spot
NPRLV-4RND40XWW	1166lm	4000K	Narrow
NPRLV-4RND40XWW	1126lm	4000K	Flood

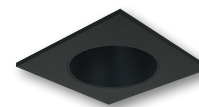
Delivered lumens will vary depending on CCT, optic and finish

PRODUCT IMAGES & DIMENSIONS

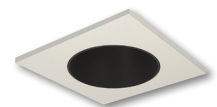


NPRLV-4SNDC

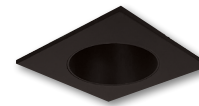
Square Reflector with Round Aperture
Non-Adjustable



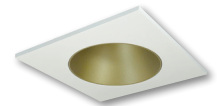
BB
Black Reflector
Black Flange



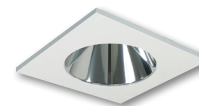
BW
Black Reflector
White Flange



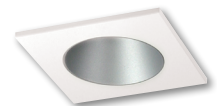
BZ
Bronze Reflector
Bronze Flange



CHMPW
Champagne Haze Reflector
Matte Powder White Flange



CMPW
Specular Clear Reflector
Matte Powder White Flange



HW
Haze Reflector
White Flange



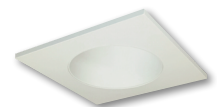
HZMPW
Haze Reflector
Matte Powder White Flange



MPW
Matte Powder White Reflector
Matte Powder White Flange



NN
Natural Metal Reflector
Natural Metal Flange



WW
White Reflector
White Flange

4" Pearl 12VAC Low Voltage LED Square Retrofit Reflector with Round Aperture

Color Temperature	Finish
NPRLV-4SNDC27X = 2700K	BB = Black / Black
NPRLV-4SNDC30X = 3000K	BW = Black / White
NPRLV-4SNDC35X = 3500K	BZ = Bronze / Bronze
NPRLV-4SNDC40X = 4000K	CHMPW = Champagne / Matte Powder White
NPRLV-4SNDCDX = Comfort Dim	CMPW = Specular Clear / Matte Powder White
	HW = Haze / White
	HZMPW = Haze / Matte Powder White
	MPW = Matte Powder White
	NN = Natural Metal / Natural Metal
	WW = White / White

Example: **NPRLV-4SNDC27XWW** = 4" Pearl 12VAC Low Voltage LED Square Retrofit Reflector with Round Aperture, 2700K, White finish

Pearl Accessories

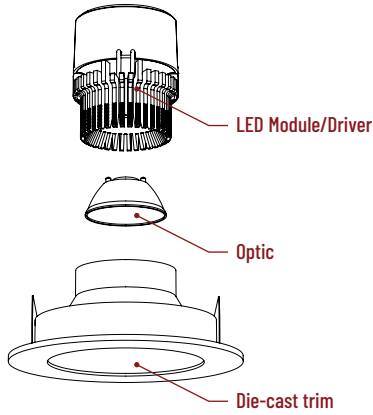
4" Pearl 12VAC Low Voltage LED Square Retrofit Reflector with Round Aperture

Type
Project
Catalog No.
Notes

FIELD CHANGEABLE OPTICS

Pearl luminaires include spot, narrow flood and flood optics. Optics can be changed in the field by removing LED module from die-cast trim. Replacement optics include an optional frosted lens.

Note: Premium TIR optics are not compatible with Comfort Dim LED modules.



Frosted Filter-Optic

NIO-REFL38FR 60° Optic
NIO-REFL60FR 73° Optic

Replaces optics that are included with each LED module.



Premium TIR Optics

NIO-REFLTIR15 22° Optic
NIO-REFLTIR25 26° Optic

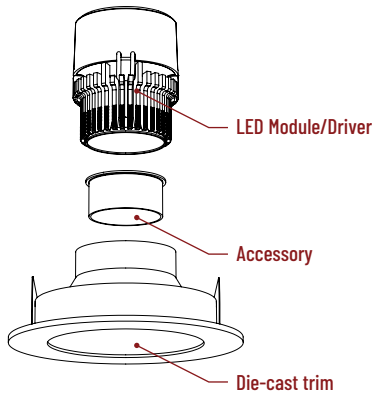
Premium TIR (total internal reflection) optics create optimal spot and narrow flood beam spread.

Not compatible with Comfort Dim (CDX) LED module

ACCESSORIES

Pearl accessories can be added at any point in the design process. Accessories easily install between LED module and die-cast trim.

Luminaire will accommodate (1) hex louver and (1) collar accessory, no accessory holder required.



Translucent Decorative Collar

NIO-AS14(color) 5/8" length
NIO-AS19(color) 3/4" length
NIO-AS26(color) 1" length
Color:
AM (amber), **BLU** (blue), **FR** (frosted), **R** (red)

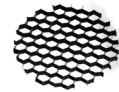
Translucent collars color the aperture with the specified color while producing white general light. Collars are available in different lengths. Use to add interest, create a theme, match a theme or define a space.



Opaque Collar Snoot

NIO-AS14(color) 5/8" length
NIO-AS19(color) 3/4" length
NIO-AS26(color) 1" length
Color:
MPW (matte powder white), **WH** (white)

Opaque snoot greatly reduces aperture brightness while preserving light output.



Hex Cell Louver

NIO-HC Black
 Hex cell louver subtly reduces aperture brightness by reducing light output by about 20%.

Hex cell louver is not compatible with TIR optics.

PHOTOMETRICS

4" Pearl 12VAC Low Voltage LED Square Retrofit Reflector with Round Aperture

Type

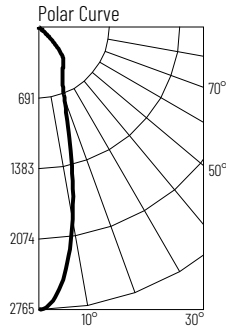
Project

Catalog No.

Notes

Test Information

Test Number: NTR2246R1
 Part Number: NPRLV-4SNDC40XWW
 Beam Spread: 28° Spot
 Lumens: 1161lm
 Wattage: 10.81W
 Efficacy: 107pw
 CCT / CRI: 4000K / 90 CRI
 Spacing Criteria (0°-180°): 0.48
 Spacing Criteria (90°-270°): 0.48



Illuminance at a Distance

Distance from Luminaire	FC at Nadir	Beam Diameter
4'	173fc	2'
6'	76.8fc	3'
8'	43.2fc	4'
10'	27.7fc	5'
12'	19.2fc	6'

Zonal Lumen Summary

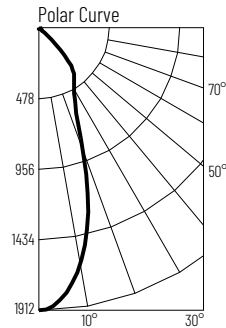
Zone	Lumens	% Luminaire
0-30	780	67.2
0-40	1005	86.6
0-60	1135	97.8
0-90	1161	100
90-180	0	0
0-180	1161	100

Candela Table

Vertical Angles	Candela
0	2765
5	2517
15	1276
25	606
35	320
45	53

Test Information

Test Number: NTR2247R1
 Part Number: NPRLV-4SNDC40XWW
 Beam Spread: 40° Narrow Flood
 Lumens: 1166lm
 Wattage: 10.81W
 Efficacy: 108pw
 CCT / CRI: 4000K / 90 CRI
 Spacing Criteria (0°-180°): 0.66
 Spacing Criteria (90°-270°): 0.66



Illuminance at a Distance

Distance from Luminaire	FC at Nadir	Beam Diameter
4'	120fc	2'-11"
6'	53.1fc	4'-4"
8'	29.9fc	5'-10"
10'	19.1fc	7'-2"
12'	13.3fc	8'-8"

Zonal Lumen Summary

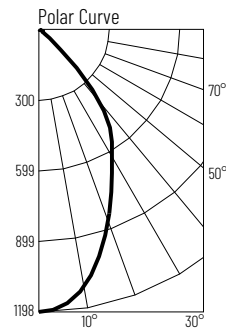
Zone	Lumens	% Luminaire
0-30	847	72.6
0-40	1061	91
0-60	1141	97.8
0-90	1166	100
90-180	0	0
0-180	1166	100

Candela Table

Vertical Angles	Candela
0	1912
5	1821
15	1311
25	660
35	383
45	54

Test Information

Test Number: NTR2248R1
 Part Number: NPRLV-4SNDC40XWW
 Beam Spread: 62° Flood
 Lumens: 1126lm
 Wattage: 10.81W
 Efficacy: 104pw
 CCT / CRI: 4000K / 90 CRI
 Spacing Criteria (0°-180°): 0.9
 Spacing Criteria (90°-270°): 0.9



Illuminance at a Distance

Distance from Luminaire	FC at Nadir	Beam Diameter
4'	74.9fc	4'-10"
6'	33.3fc	7'-2"
8'	18.7fc	9'-7"
10'	12fc	11'-11"
12'	8.3fc	14'-4"

Zonal Lumen Summary

Zone	Lumens	% Luminaire
0-30	731	64.9
0-40	999	88.7
0-60	1098	97.5
0-90	1126	100
90-180	0	0
0-180	1126	100

Candela Table

Vertical Angles	Candela
0	1198
5	1173
15	1001
25	754
35	473
45	67