

# NPRLV-4SNSDQ

## 4" Pearl 12VAC Low Voltage LED Square Retrofit Reflector with Square Aperture

Source: 11W LED  
1100lm

### PRODUCT DESCRIPTION

Pearl low voltage retrofit series is cULus classified for use in existing IC or Non-IC housings manufactured by Nora and others. The 4" retrofit luminaires deliver over 1100 lumens with deep regressed cone reflector for optimal visual cut-off.

### FEATURES

- Comfort Dim (warm dimming) is available in 650lm only
- 2700K, 3000K, 3500K, 4000K @ 90+ CRI
- Field changeable optics included (Spot, Narrow Flood and Flood - installed)
- Integral dimmable driver
- 5-year limited warranty
- cULus classified for wet locations

### SPECIFICATION

**Construction:** Trims are constructed of heat dissipating, die-cast aluminum. The aluminum die-cast LED heat sink is threaded to fit the trim and transfer heat.

**Mounting:** Luminaire includes friction blades to mount securely to housing.

### OPTICS

Three field changeable optics (spot, narrow flood and flood) are included with each LED module. Premium 22° and 26° TIR optics are also available.

### ELECTRICAL

**Input Voltage:** 12VAC 60Hz

**Socket:** GU5.3

**Lumens / Wattage:** 1100lm / 11W (650lm w/ Comfort Dim)

**Color Temperature:** 2700K, 3000K, 3500K, 4000K

**Color Rendering Index:** 90+CRI

**Beam Spread:** 28° Spot, 40° Narrow Flood, 56° Flood

**Operating Temperature:** 0°C to 25°C

**Lifetime:** 50,000 hours @ L70

**Comfort Dim:** Comfort Dim color tunes the temperature from a bright 3100K, to a romantic and comfortable 2000K on a gradual, even curve. Available in 650lm only.

**Dimming:** Triac (leading edge) or ELV (trailing edge)

[Click Here](#) or check complete dimmer list at

[www.NoraLighting.com](http://www.NoraLighting.com) in the "Compatibility" page under "Resources" tab

### COMPATIBLE HOUSINGS

Pearl retrofits are compatible with 4" IC and Non-IC housings by Nora and others.

[NLIC-401](#) 4" IC Air-Tight Double Wall New Construction

[NL-401](#) 4" Non-IC New Construction

[NLR-404](#) 4" Non-IC Remodel

**Accessories:** Luminaires can accommodate (1) hex louver and (1) translucent deco collar or opaque snoot, no accessory holder is required, see accessories page.

### LABELS AND LISTINGS

- cULus classified for Wet Locations
- RoHS compliant
- [5-Year Limited Warranty](#)
- Certified to the high efficacy requirements of California Title 24 JA8-2022



Type

Project

Catalog No.

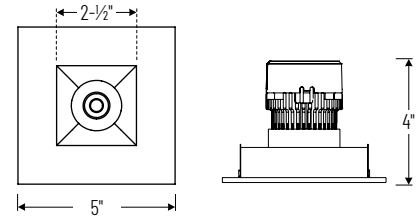
Notes

### Performance Data

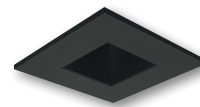
Part Number	Lumens	CCT	Optic
<b>NPRLV-4SNSDQ40XWW</b>	1144lm	4000K	Spot
<b>NPRLV-4SNSDQ40XWW</b>	1133lm	4000K	Narrow
<b>NPRLV-4SNSDQ40XWW</b>	1102lm	4000K	Flood

*Delivered lumens will vary depending on CCT, optic and finish*

### PRODUCT IMAGES & DIMENSIONS



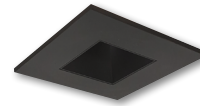
**NPRLV-4SNSDQ**  
Square Reflector with Square Aperture  
Non-Adjustable



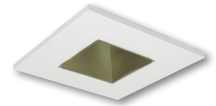
**BB**  
Black Reflector  
Black Flange



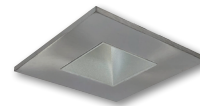
**BW**  
Black Reflector  
White Flange



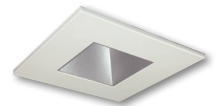
**BZ**  
Bronze Reflector  
Bronze Flange



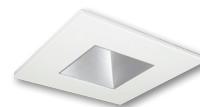
**CHMPW**  
Champagne Haze Reflector  
Matte Powder White Flange



**HN**  
Haze Reflector  
Natural Metal Flange



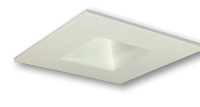
**HW**  
Haze Reflector  
White Flange



**HZMPW**  
Haze Reflector  
Matte Powder White Flange



**MPW**  
Matte Powder White Reflector  
Matte Powder White Flange



**WW**  
White Reflector  
White Flange

## 4" Pearl 12VAC Low Voltage LED Square Retrofit Reflector with Square Aperture

Color Temperature	Finish
<b>NPRLV-4SNSDQ27X</b> = 2700K	<b>BB</b> = Black / Black
<b>NPRLV-4SNSDQ30X</b> = 3000K	<b>BW</b> = Black / White
<b>NPRLV-4SNSDQ35X</b> = 3500K	<b>BZ</b> = Bronze / Bronze
<b>NPRLV-4SNSDQ40X</b> = 4000K	<b>CHMPW</b> = Champagne / Matte Powder White
<b>NPRLV-4SNSDQCDX</b> = Comfort Dim	<b>HN</b> = Haze / Natural Metal
	<b>HW</b> = Haze / White
	<b>HZMPW</b> = Haze / Matte Powder White
	<b>MPW</b> = Matte Powder White
	<b>WW</b> = White / White

Example: **NPRLV-4SNSDQ27XWW** = 4" Pearl 12VAC Low Voltage LED Square Retrofit Reflector with Square Aperture, 2700K, White finish

# Pearl Accessories

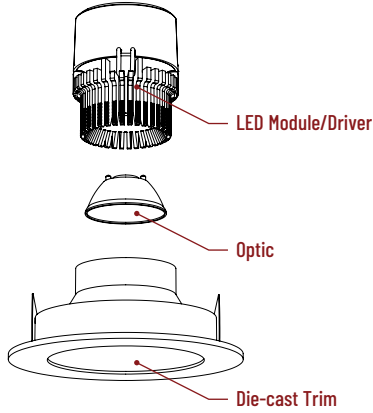
## 4" Pearl 12VAC Low Voltage LED Square Retrofit Reflector with Square Aperture

Type
Project
Catalog No.
Notes

### FIELD CHANGEABLE OPTICS

Pearl luminaires include spot, narrow flood and flood optics. Optics can be changed in the field by removing LED module from die-cast trim. Replacement optics include an optional frosted lens.

**Note:** Premium TIR optics are not compatible with Comfort Dim LED modules.



Frosted Optics

**NIO-REFL38FR** 60° Optic  
**NIO-REFL60FR** 73° Optic

Replaces optics that are included with each LED module.



Premium TIR Optics

**NIO-REFLTIR15** 22° Optic  
**NIO-REFLTIR25** 26° Optic

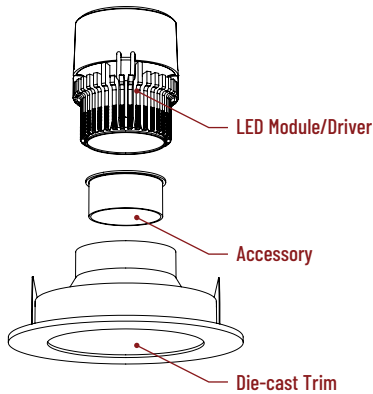
Premium TIR (total internal reflection) optics create optimal spot and narrow flood beam spread.

**Not compatible with Comfort Dim (CDX) LED module**

### ACCESSORIES

Pearl accessories can be added at any point in the design process. Accessories easily install between LED module and die-cast trim.

Luminaire will accommodate (1) hex louver and (1) collar accessory, no accessory holder required.



Translucent Decorative Collar

**NIO-AS14(color)** 5/8" length  
**NIO-AS19(color)** 3/4" length  
**NIO-AS26(color)** 1" length  
**Color:**  
**AM** (amber), **BLU** (blue), **FR** (frosted), **R** (red)

Translucent collars color the aperture with the specified color while producing white general light. Collars are available in different lengths. Use to add interest, create a theme, match a theme or define a space.



Opaque Collar Snoot

**NIO-AS14(color)** 5/8" length  
**NIO-AS19(color)** 3/4" length  
**NIO-AS26(color)** 1" length  
**Color:**  
**MPW** (matte powder white), **WH** (white)

Opaque snoot greatly reduces aperture brightness while preserving light output.



Hex Cell Louver

**NIO-HC** Black

Hex cell louver subtly reduces aperture brightness by reducing light output by about 20%.

Hex cell louver is not compatible with TIR optics.

# PHOTOMETRICS

## 4" Pearl 12VAC Low Voltage LED Square Retrofit Reflector with Square Aperture

Type

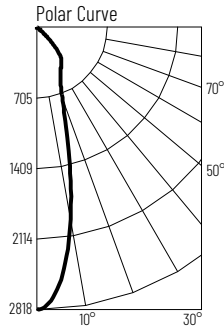
Project

Catalog No.

Notes

### Test Information

Test Number: NTR2258R1  
 Part Number: NPRLV-4SNDSQ40XWW  
 Beam Spread: 28° Spot  
 Lumens: 1144lm  
 Wattage: 10.79W  
 Efficacy: 106pw  
 CCT / CRI: 4000K / 90 CRI  
 Spacing Criteria (0°-180°): 0.46  
 Spacing Criteria (90°-270°): 0.48



### Illuminance at a Distance

Distance from Luminaire	FC at Nadir	Beam Diameter
4'	176fc	2'
6'	78.3fc	3'
8'	44fc	3'-11"
10'	28.2fc	4'-11"
12'	19.6fc	5'-11"

### Zonal Lumen Summary

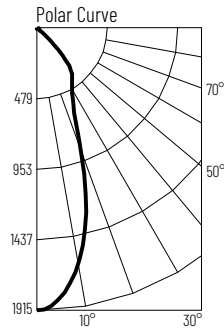
Zone	Lumens	% Luminaire
0-30	861	75.3
0-40	1024	89.5
0-60	1109	97
0-90	1144	100
90-180	0	0
0-180	1144	100

### Candela Table

Vertical Angles	Candela
0	2818
5	2543
15	1235
25	580
35	133
45	62

### Test Information

Test Number: NTR2259R1  
 Part Number: NPRLV-4SNDSQ40XWW  
 Beam Spread: 40° Narrow Flood  
 Lumens: 1133lm  
 Wattage: 10.78W  
 Efficacy: 105pw  
 CCT / CRI: 4000K / 90 CRI  
 Spacing Criteria (0°-180°): 0.64  
 Spacing Criteria (90°-270°): 0.64



### Illuminance at a Distance

Distance from Luminaire	FC at Nadir	Beam Diameter
4'	120fc	2'-11"
6'	53.2fc	4'-4"
8'	29.9fc	5'-10"
10'	19.2fc	7'-2"
12'	13.3fc	8'-7"

### Zonal Lumen Summary

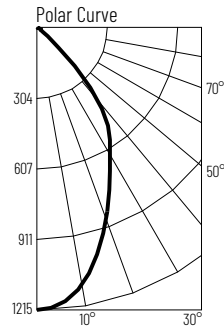
Zone	Lumens	% Luminaire
0-30	755	66.6
0-40	963	85
0-60	1090	96.2
0-90	1133	100
90-180	0	0
0-180	1133	100

### Candela Table

Vertical Angles	Candela
0	1915
5	1833
15	1302
25	643
35	168
45	60

### Test Information

Test Number: NTR2260R1  
 Part Number: NPRLV-4SNDSQ40XWW  
 Beam Spread: 56° Flood  
 Lumens: 1102lm  
 Wattage: 10.79W  
 Efficacy: 102pw  
 CCT / CRI: 4000K / 90 CRI  
 Spacing Criteria (0°-180°): 0.86  
 Spacing Criteria (90°-270°): 0.86



### Illuminance at a Distance

Distance from Luminaire	FC at Nadir	Beam Diameter
4'	75.9fc	4'-4"
6'	33.7fc	6'-5"
8'	19fc	8'-7"
10'	12.1fc	10'-8"
12'	8.4fc	12'-10"

### Zonal Lumen Summary

Zone	Lumens	% Luminaire
0-30	629	57.1
0-40	890	80.7
0-60	1055	95.8
0-90	1102	100
90-180	0	0
0-180	1102	100

### Candela Table

Vertical Angles	Candela
0	1215
5	1187
15	1006
25	714
35	268
45	76