

# NORA<sup>®</sup>

LIGHTING



## PEARL SERIES

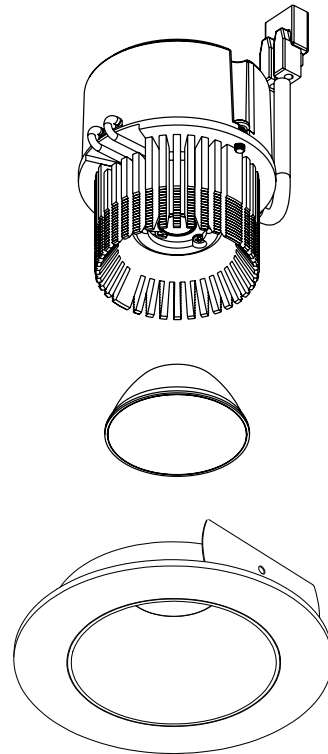
4", 5" & 6" LED RETROFIT





# PEARL

## LED RETROFIT



Pearl Recessed LED Retrofit luminaires are the high-end, quality solution for easy LED retrofitting in residential and light commercial applications. With a maximum height of just 4-1/2", Pearl can be retrofitted in most IC and non-IC housings—including shallow! The dimmable Pearl luminaires produce over 1200 lumens with COB LEDs or 750 lumens with Comfort Dim technology. Available in a beautiful array of fixed and adjustable styles in ten finishes, each Pearl includes three field changeable optics for maximum design control. Optional accessories can further customize the fixtures.

# PEARL 120V RETROFIT SYSTEM

**Medium Base Socket Adapter**  
included with each luminaire for easy retrofitting in recessed housings

**Integral Driver**  
120V input  
Triac / ELV dimming

**Field Changeable Optics**  
Each module includes spot, narrow flood and flood optics (TIR optics also available)

**Trimless Mud Plates**  
Knife edge appearance for existing 4" or 6" housings

**Round or Square Trims**  
13 styles and 11 finishes

**White Light Dimming** maintains consistent kelvin temperature across the dimming range, keeping colors consistent and natural.

**Comfort Dim** creates an intimate atmosphere by color tuning the temperature from a bright 3000K to a rich and warm 2000K as power is reduced.

**750-1200 LUMENS**

**Over 1200lm LED Output**  
2700K, 3000K, 3500K, 4000K

**750lm LED Output**  
with Comfort Dim technology

2700K 3000K 3500K 4000K COMFORT DIM

SPOT NARROW FLOOD FLOOD

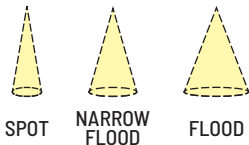
ROUND SQUARE

# PEARL 12V RETROFIT SYSTEM

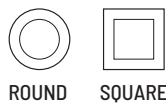
**GU5.3 Socket Adapter**  
included with each luminaire  
for easy retrofitting in  
low voltage housings

**Integral Driver**  
Triac / ELV dimming

**Extruded Aluminum Heat Sink**  
with COB LED technology



**Field Changeable Optics**  
Each module includes spot,  
narrow flood and flood optics  
(TIR optics also available)



**Round or Square Trims**  
13 styles and 11 finishes

**White Light Dimming** maintains  
consistent kelvin temperature  
across the dimming range,  
keeping colors consistent and  
natural.

**Comfort Dim** creates an intimate  
atmosphere by color tuning the  
temperature from a bright 3000K  
to a rich and warm 2000K as  
power is reduced.

  
**750-1200**  
LUMENS

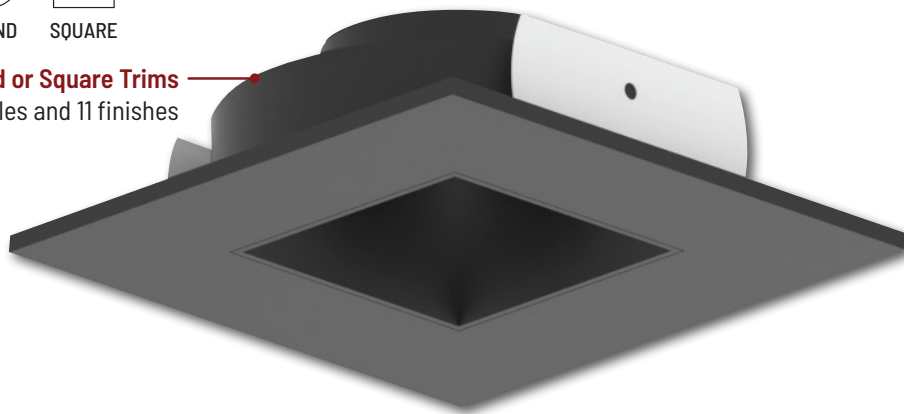
**Over 1200lm LED Output**  
2700K, 3000K, 3500K, 4000K

**750lm LED Output**  
with Comfort Dim technology



**SH Shallow Housing Compatible**

Luminaires designated with the  
shallow icon are compatible  
with shallow plenum housings  
by Nora and others.



# 4" PEARL RETROFIT

TWELVE TRIM OPTIONS · OVER 1200LM · 2700K-4000K or COMFORT DIM

Pearl LED Retrofit series is cULus classified for use in existing IC or non-IC housings manufactured by Nora and others. 4" retrofit luminaires produce over 1200 lumen output with optimal visual cut-off. Downlight and adjustable styles aim the light source.

### ELECTRICAL:

**Input Voltage:** 120V or 12V

**Socket:** Medium Base (120V) or GU5.3 (12V)

**Lumens / Wattage:** 1200lm / 10W (750lm w/ Comfort Dim)

**Color Temperature:**

2700K, 3000K, 3500K, 4000K or Comfort Dim (warm dim)

**Color Rendering Index:** 90+ CRI

**Dimming:** Triac or ELV

**COMFORT DIM:** Comfort Dim color tunes the

temperature from a bright 3000K, to a romantic and comfortable 2000K on a gradual, even curve. Available in 750lm only.

### CONSTRUCTION:

**Trim/Module:** Die-cast aluminum trims are threaded to mount LED module securely and dissipate heat away from light source. Three field-changeable optics are included with each luminaire: spot, narrow flood and flood (installed).

**INSTALLATION:** Compatible with Nora housings listed and most 4" IC and non-IC housings by others.

**RETROFIT:** 120V Pearl retrofit series includes medium base socket adapter (NRA-21ISM) for retrofitting into existing medium base downlight housings. GU24 socket adapter is available for use with GU24 housings, must specify NRA-212SM.

### LISTING & WARRANTY:

- cULus Classified for Wet Location (Adjustables are rated for damp locations)
- ROHS compliant
- 5 Year Limited Warranty
- Certified to the high efficacy requirements of California Title 24 JA8-2025

### COMPATIBLE 120V HOUSINGS:

Fire Box	
<b>NFBIC-4LMRATA</b>	120V ICAT LED Dedicated
<b>NFBIC-427LMRATA</b>	120V Shallow ICAT LED Dedicated
<b>NFBIC-4INCATA</b>	120V ICAT Line Voltage

New Construction	
<b>NSIC-4LMRAT</b>	120V Max. Adjust. ICAT LED
<b>NHIC-4LMRAT</b>	120V ICAT LED Dedicated
<b>NHIC-4LMRAT/277</b>	277V ICAT LED Dedicated, (includes step-down transformer)
<b>NHIC-427LMRAT</b>	120V Shallow ICAT LED Dedicated
<b>NSIC-401QAT</b>	120V ICAT Line Voltage
<b>NS-401QAT</b>	120V AT Line Voltage
<b>NHIC-4G24AT<sup>1</sup></b>	120V ICAT GU24

Remodel	
<b>NHRIC-4LMRAT</b>	120V ICAT LED Dedicated
<b>NHRIC-427LMRAT</b>	120V Shallow ICAT LED Dedicated
<b>NSRIC-404QAT</b>	120V ICAT Line Voltage
<b>NSR-404QAT</b>	120V AT Line Voltage

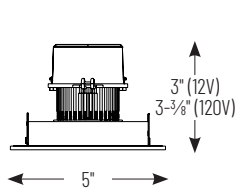
<sup>1</sup>Requires NRA-212SM - GU24 adapter



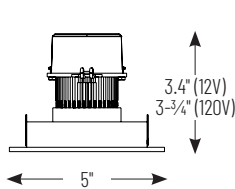
## PEARL 4" LED RETROFIT

INPUT VOLTAGE	SIZE / SHAPE	TRIM TYPE	COLOR TEMPERATURE / LUMENS	FINISH
<b>NPR</b> 120V	<b>4R</b> 4" Round	<b>C</b> Adjustable Cone <b>SH</b>	<b>27X</b> 2700K / 1200lm	<b>BB</b> Black / Black Flange
<b>NPRLV</b> 12V	<b>4S</b> 4" Square	<b>G</b> Adjustable Gimbal <b>SH</b>	<b>30X</b> 3000K / 1200lm	<b>BMPW</b> Black / Bright White Flange
		<b>NB</b> Non-Adj. Bullnose <b>WET</b>	<b>35X</b> 3500K / 1200lm	<b>BW</b> Black / Warm White Flange
		<b>NDC</b> Reflector w/Round Aperture <b>WET</b>	<b>40X</b> 4000K / 1200lm	<b>BZ</b> Bronze / Bronze Flange
		<b>PH</b> Non-Adj. Pinhole <b>WET</b>	<b>CDX</b> Comfort Dim / 750lm	<b>CHMPW</b> Champagne Haze / Bright White Flange
		<b>PHA</b> Adjustable Pinhole		<b>CMPW</b> Specular Clear / Bright White Flange
		<b>SL</b> Adjustable Slot Aperture Pinhole		<b>HW</b> Haze / Warm White Flange
		<b>SLA</b> Adjustable Slot		<b>HZMPW</b> Haze / Bright White Flange
		<b>TLA</b> Trimless Adjustable		<b>MPW</b> Bright White / Bright White Flange
		<b>TLNDC</b> Trimless Downlight <b>WET</b>		<b>NN</b> Natural Metal / Natural Metal Flange
		<b>TSLA</b> Trimless Adjustable Slot		<b>WW</b> Warm White / Warm White Flange
		<b>NDSQ</b> Reflector w/Square Aperture <b>WET</b>		

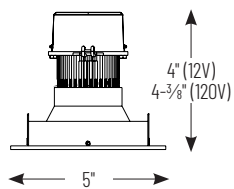
Example: **NPR-4RC30XMPW** - 4" 120V Round Adjustable Cone Retrofit, 3000K / 1200lm, Bright White Reflector with Bright White Flange



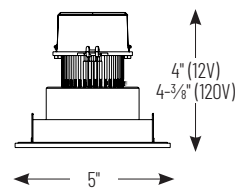
**NPR(LV)-4RC**  
**NPR(LV)-4RG**  
**NPR(LV)-4SC**  
**NPR(LV)-4SG**



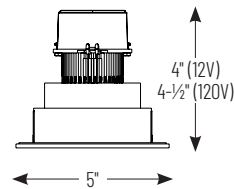
**NPR(LV)-4RNB**  
**NPR(LV)-4SNB**



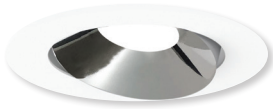
**NPR(LV)-4RND**  
**NPR(LV)-4SND**



**NPR(LV)-4RPH**  
**NPR(LV)-4SND**



**NPR(LV)-4RPHA**  
**NPR(LV)-4RSL**



**SH** NPR-4RC (120V)  
**SH** NPRLV-4RC (12V)

4" Round Adjustable Cone Regress  
BB, BW, BZ, CMPW,  
HW, HZMPW, MPW, NN, WW  
10°-35° Adjustable (determined by housing)



**SH** NPR-4RG (120V)  
**SH** NPRLV-4RG (12V)

4" Round Adjustable Gimbal  
BB, BZ, MPW, NN, WW  
10°-35° Adjustable (determined by housing)



**WET**  
NPR-4RNB (120V)  
NPRLV-4RNB (12V)

4" Round Bullnose  
BB, BZ, MPW, NN, WW  
Non-Adjustable



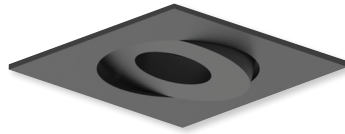
**WET**  
NPR-4RND (120V)  
NPRLV-4RND (12V)

4" Round Reflector w/ Round Aperture  
BB, BW, BZ, CHMPW, CMPW,  
HW, HZMPW, MPW, NN, WW  
Non-Adjustable



**SH** NPR-4SC (120V)  
**SH** NPRLV-4SC (12V)

4" Square Adjustable Cone Regress  
BB, BW, BZ, CHMPW, CMPW,  
HW, HZMPW, MPW, NN, WW  
35° Adjustable (determined by housing)



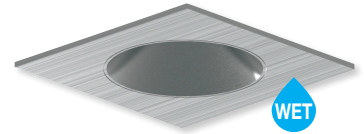
**SH** NPR-4SG (120V)  
**SH** NPRLV-4SG (12V)

4" Square Adjustable Gimbal  
BB, BZ, MPW, NN, WW  
35° Adjustable (determined by housing)



**WET**  
NPR-4SNB (120V)  
NPRLV-4SNB (12V)

4" Square Bullnose  
BB, BZ, MPW, NN, WW  
Non-Adjustable



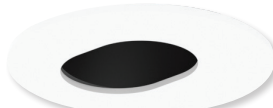
**WET**  
NPR-4SND (120V)  
NPRLV-4SND (12V)

4" Square Reflector w/ Round Aperture  
BB, BW, BZ, CHMPW, CMPW,  
HW, HZMPW, MPW, NN, WW  
Non-Adjustable



**WET**  
NPR-4RPH (120V Fixed)  
NPR-4RPHA (120V Adj.)  
NPRLV-4RPH (12V Fixed)  
NPRLV-4RPHA (12V Adj.)

4" Round Pinhole  
BB, BMPW, HZMPW, MPW, WW  
30° Adjustable (12V = 15°)  
(determined by housing)



NPR-4RSL (120V)  
NPRLV-4RSL (12V)

4" Round Slot Aperture  
BB, BMPW, HZMPW, MPW  
30° Adjustable (12V = 15°)



**WET**  
NPR-4RSLA (120V)  
NPRLV-4RSLA (12V)

4" Round Slot  
BMPW, MPW  
35° Adjustable (determined by housing)



**WET**  
NPR-4SND (120V)  
NPRLV-4SND (12V)

4" Square Reflector w/ Square Aperture  
BB, BMPW, BZ, CHMPW, HN,  
HW, HZMPW, MPW, WW  
Non-Adjustable



NPR-4RTLA (120V)  
NPRLV-4RTLA (12V)

4" Round Trimless Adjustable  
BB, BW, BZ, CH, CHMPW,  
HW, HZMPW, MPW, WW  
35° Adjustable (determined by housing)  
new construction housings only



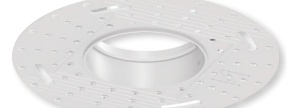
NPR-4RTL (120V)  
NPRLV-4RTL (12V)

4" Round Trimless Downlight  
BB, BZ, CH, HZ, MPW  
Non-Adjustable  
new construction housings only



**WET**  
NPR-4RTSLA (120V)  
NPRLV-4RTSLA (12V)

4" Round Trimless Adjustable Slot  
BB, BZ, CH, HZ, MPW, WW  
35° Adjustable (determined by housing)  
new construction housings only



NPR-TLMR-4R (4")  
NPR-TLMR-6R (6" to 4")  
Trimless Mud Plates  
Required per trimless

**SH** designates reflectors compatible with shallow housings

### FINISHES



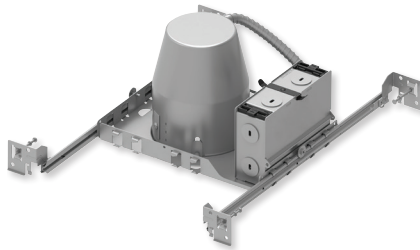
BB BMPW BW BZ CHMPW CMPW HW HZMPW MPW NN WW

# 120V PEARL COMPATIBLE 4" NORA HOUSINGS

## RETROFIT FOR ANY APPLICATION

120V LED Retrofit luminaires are compatible with most IC and non-IC housings by Nora and others including shallow plenum.

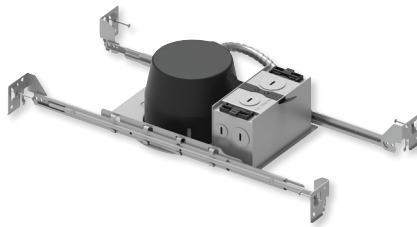
When retrofitting into a shallow housing, specify Pearl reflector designated with SH icon.



### 120V New Construction Housings

**NHIC-4LMRAT** ICAT LED Dedicated  
**NHIC-4LMRAT/277** ICAT LED Dedicated, 277V  
**NS-401QAT** AT Line Voltage

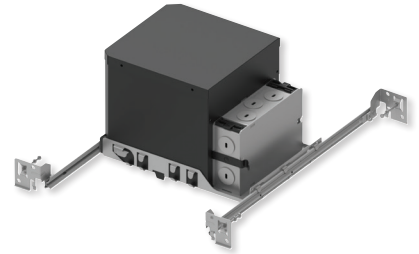
New construction applications with standard plenum ceilings.



### 120V Shallow New Construction Housings

**SH NHIC-427LMRAT** Shallow ICAT LED Dedicated

3-1/2" IC Air-Tight Shallow new construction housing allows for installations in shallow plenums.



### 120V Maximum Adjustability ICAT Housing

**NSIC-4LMRAT** Max Adjustability ICAT LED Dedicated

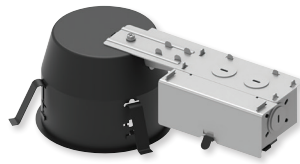
New construction housing allows reflectors to adjust up to 35°. Accommodates ceilings up to 1.75" thick with NSIC-4EXTC2 collar.



### 120V Remodel Housings

**NHRIC-4LMRAT** ICAT LED Dedicated  
**NSRIC-404QAT** ICAT Line Voltage  
**NSR-404QAT** AT Line Voltage  
**NHRIC-4G24AT** ICAT GU24 (req. NRA-212SM)

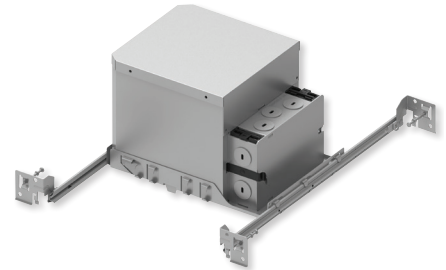
Remodel applications for standard plenum ceilings.



### 120V Shallow Remodel Housings

**SH NHRIC-427LMRAT** Shallow ICAT LED Dedicated

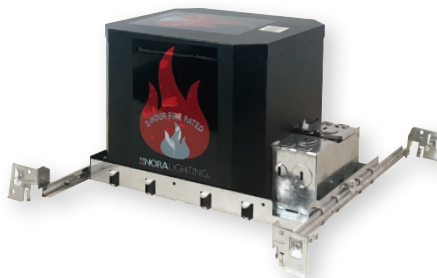
3-1/2" IC Air-Tight Shallow remodel housing allows for installations in existing shallow plenums.



### 120V New Construction ICAT Double Wall Housing

**NSIC-401QAT** ICAT Line Voltage

Rated for direct contact with insulation (not spray foam or combustible materials).



### 120V Fire Rated Housings

**NFBIC-4LMRATA** Fire Rated LED Dedicated  
**NFBIC-4INCATA** Fire Rated Line Voltage

cULus listed housing is fire rated for a minimum of two hours protection.



### 120V Shallow Fire Rated Housings

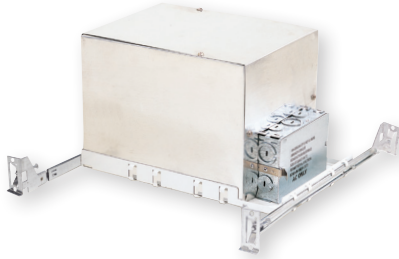
**SH NFBIC-427LMRATA** Shallow Fire Rated LED Dedicated

4-13/16" Fire rated new construction housing allows for installations in shallow plenums. cULus listed housing is fire rated for a minimum of two hours protection.

# 12V PEARL COMPATIBLE 4" NORA HOUSINGS

## RETROFIT FOR GU5.3 SOCKETS

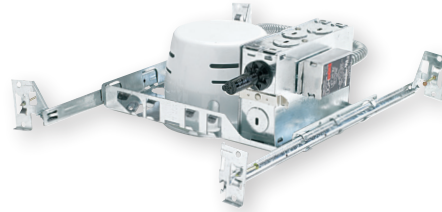
12V LED Retrofit luminaires are compatible with most IC and non-IC housings by Nora and others including shallow plenum. When retrofitting into a shallow housing, specify Pearl reflector designated with SH icon.



### 12V New Construction Housings

**NLIC-401AT/1EL** ICAT 120V/12V Electronic  
**NLIC-401AT/2EL** ICAT 277V/12V Electronic  
**NLIC-401QSAT** ICAT 120V/12V Magnetic  
**NL-401AT/1EL** AT 120V/12V Electronic  
**NL-401QAT** AT 120V/12V Magnetic

New construction applications with standard plenum ceilings.



### 12V Shallow New Construction Housings

**SH NL-402S** Shallow 120V/12V Magnetic  
**SH NL-402S/1EL** Shallow 120V/12V Electronic

3-1/2" IC Air-Tight Shallow new construction housing allows for installations in shallow plenums.



### 12V Remodel Housings

**NLR-404AT/1EL** AT 120V/12V Electronic  
**NLR-404AT/2EL** AT 277V/12V Electronic  
**NLR-404QAT** AT 120V/12V Magnetic

Remodel applications for standard plenum ceilings.



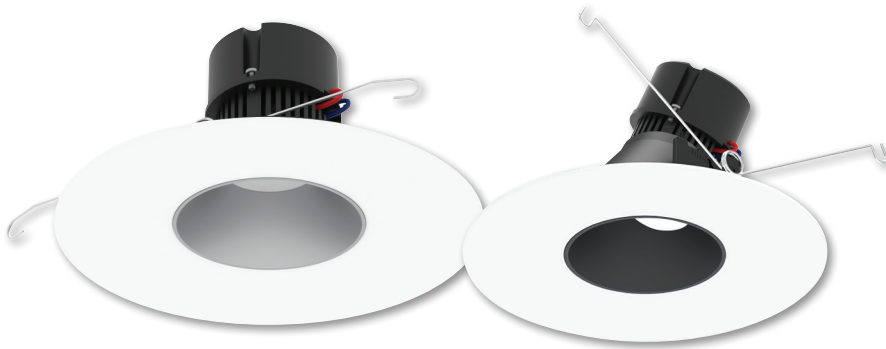
### 12V Shallow Remodel Housings

**SH NLR-403S** Shallow 120V/12V Magnetic  
**SH NLR-403S/1EL** Shallow 120V/12V Electronic

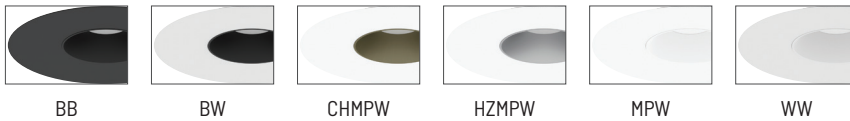
3-1/2" IC Air-Tight Shallow remodel housing allows for installations in existing shallow plenums.

# 5"/6" PEARL RETROFIT

OVER 1150LM · 2700K-4000K or COMFORT DIM



## FINISHES



BB

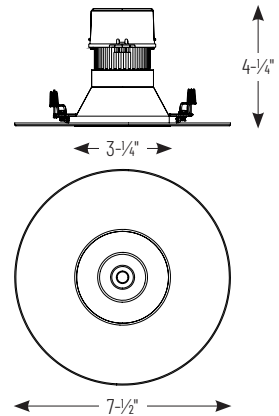
BW

CHMPW

HZMPW

MPW

WW



Pearl LED Retrofit series is cULus classified for use in existing IC or non-IC housings manufactured by Nora and others. 5"/6" retrofit luminaires produce over 1150 lumen output with optimal visual cut-off.

### ELECTRICAL:

**Input Voltage:** 120V or 12V

**Socket:** Medium Base (120V) or GU5.3 (12V)

**Lumens / Wattage:** 1150lm / 10W (700lm w/ Comfort Dim)

### Color Temperature:

2700K, 3000K, 3500K, 4000K or Comfort Dim (warm dim)

**Color Rendering Index:** 90+ CRI

**Dimming:** Triac or ELV

**COMFORT DIM:** Comfort Dim color tunes the temperature from a bright 3000K, to a romantic and comfortable 2000K on a gradual, even curve. Available in 700lm only.

### CONSTRUCTION:

**Trim/Module:** Die-cast aluminum trims are threaded to mount LED module securely and dissipate heat away from light source. Three field-changeable optics are included with each luminaire: spot, narrow flood and flood (installed).

**INSTALLATION:** Compatible with Nora housings listed and most 5" and 6" IC or non-IC housings.

**RETROFIT:** 120V Pearl retrofit series includes medium base socket adapter (NRA-211SM) for retrofitting into existing medium base downlight housings. GU24 socket adapter is available for use with GU24 housings, must specify NRA-212SM.

### LISTING & WARRANTY:

- cULus Classified for Wet Location
- ROHS compliant
- 5 Year Limited Warranty
- Certified to the high efficacy requirements of California Title 24 JA8-2025



### COMPATIBLE 120V HOUSINGS:

#### Fire Box

NFBIC-5LMRATA	5" 120V ICAT LED Dedicated
NFBIC-5INCATA	5" 120V ICAT Line Voltage
NFBIC-6LMRATA	6" 120V ICAT LED Dedicated
NFBIC-6INCATA	6" 120V ICAT Line Voltage

#### New Construction

NHIC-5LMRAT	5" 120V ICAT LED Dedicated
NHIC-5LMRAT/277	5" 277V ICAT LED Dedicated (includes step-down transformer)
NHIC-527LMRAT	5" 120V Shallow ICAT LED Dedicated
NHIC-501QAT	5" 120V ICAT Line Voltage
NHIC-527QAT	5" 120V Shallow ICAT Line Voltage
NHIC-6LMRAT	6" 120V ICAT LED Dedicated
NHIC-6LMRAT/277	6" 277V ICAT LED Dedicated (includes step-down transformer)
NHICCP-6LMRAT	6" 120V Chicago Plenum LED Dedicated
NHIC-27LMRAT	6" 120V Shallow ICAT LED Dedicated
NHIC-17QAT	6" 120V ICAT Line Voltage
NHIC-27QAT	6" 120V Shallow ICAT Line Voltage
NH-26Q	6" 120V Non-IC Line Voltage
NHIC-6G24ATFL <sup>1</sup>	6" 120V ICAT GU24

#### Remodel

NHRIC-5LMRAT	5" 120V ICAT LED Dedicated
NHRIC-527LMRAT	5" 120V Shallow ICAT LED Dedicated
NHRIC-504QAT	5" 120V ICAT Line Voltage
NHRIC-527QAT	5" 120V Shallow ICAT Line Voltage
NHRIC-6LMRAT	6" 120V ICAT LED Dedicated
NHRIC-27LMRAT	6" 120V Shallow ICAT LED Dedicated
NHRIC-17QAT	6" 120V ICAT Line Voltage
NHRIC-27QAT	6" 120V Shallow ICAT Line Voltage
NHR-26Q	6" 120V Non-IC Line Voltage
NHR-27Q	6" 120V Shallow Non-IC Line Voltage

<sup>1</sup>Requires NRA-212SM - GU24 adapter

## PEARL 5"/6" LED RETROFIT

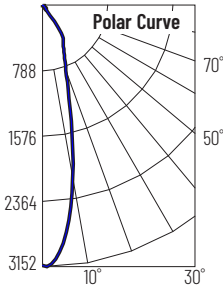
INPUT VOLTAGE	TRIM TYPE	COLOR TEMPERATURE	REFLECTOR FINISH / FLANGE FINISH
NPR-56 120V	RNDC Downlight	27X 2700K	BB Black
NPRLV-56 12V	RSLA Adjustable Slot	30X 3000K	BW Black / Warm White Flange
		35X 3500K	CHMPW Champagne Haze / Bright White Flange
		40X 4000K	HZMPW Haze / Bright White Flange
		CDX Comfort Dim	MPW Bright White
			WW Warm White

Example: NPR-56RNDC30XMPW - 5"/6" 120V Retrofit Downlight, 3000K / 1150lm, Bright White Finish

# 5"/6" PEARL SERIES PHOTOMETRICS

## ROUND DOWNLIGHT: 1150LM / 4000K / 26° SPOT

Item Number: NPR-56RNDC40XMPW  
 Lumens: 1183lm    Wattage: 9.57W    Efficacy: 124lpw



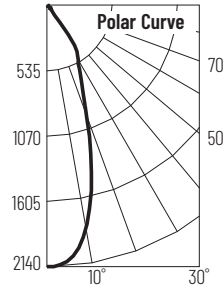
Zonal Lumen Summary		
Zone	Lumens	% Luminaire
0-30	906	76.6
0-40	1089	92
0-60	1159	97.9
0-90	1183	100

Candela Table	
Vertical Angles	Candela
0	3141
15	1298
25	620
35	332
45	56

Illuminance at a Distance		
Distance from Luminaire	FC at Nadir	Beam Diameter
4'	186fc	1'-11"
6'	87.2fc	2'-10"
8'	49.1fc	3'-8"
10'	31.4fc	4'-8"
12'	21.8fc	5'-7"

## ROUND DOWNLIGHT: 1150LM / 4000K / 37° NFL

Item Number: NPR-56RNDC40XMPW  
 Lumens: 1189lm    Wattage: 9.57W    Efficacy: 124lpw



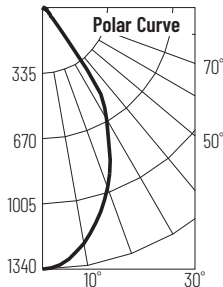
Zonal Lumen Summary		
Zone	Lumens	% Luminaire
0-30	891	74.9
0-40	1084	91.2
0-60	1162	97.8
0-90	1189	100

Candela Table	
Vertical Angles	Candela
0	2140
15	1415
25	666
35	365
45	55

Illuminance at a Distance		
Distance from Luminaire	FC at Nadir	Beam Diameter
4'	134fc	2'-8"
6'	59.4fc	4'-1"
8'	33.4fc	5'-5"
10'	21.4fc	6'-10"
12'	14.9fc	8'-1"

## ROUND DOWNLIGHT: 1150LM / 4000K / 59° FLOOD

Item Number: NPR-56RNDC40XMPW  
 Lumens: 1185lm    Wattage: 9.57W    Efficacy: 124lpw



Zonal Lumen Summary		
Zone	Lumens	% Luminaire
0-30	806	68.1
0-40	1067	90
0-60	1155	97.5
0-90	1185	100

69Candela Table	
Vertical Angles	Candela
0	1340
15	1111
25	818
35	463
45	69

Illuminance at a Distance		
Distance from Luminaire	FC at Nadir	Beam Diameter
4'	83.8fc	4'-6"
6'	37.2fc	6'-10"
8'	20.9fc	9'-1"
10'	13.4fc	11'-4"
12'	9.3fc	13'-7"



**NORA LIGHTING, INC.**

6505 Gayhart St.  
Commerce, CA 90040  
TEL 323.767.2600  
FAX 323.722.3677  
[www.NoraLighting.com](http://www.NoraLighting.com)

**DOMESTIC FACILITIES:**

Cincinnati, OH  
Dallas, TX  
Detroit, MI  
Edison, NJ  
Los Angeles, CA  
Louisville, KY  
Minneapolis, MN  
Nashville, TN

**INTERNATIONAL SALES:**

6505 Gayhart St.  
Commerce, CA 90040  
TEL 323.767.2600  
FAX 323.722.3677

The products shown in this catalog  
are covered by USA and International  
patents. Specifications subject to  
change without notice.

© Copyright 2026 Nora Lighting, Inc.  
All rights reserved

ML-PEARLB0126

