

NFBIC-4LMRAT

4" Recessed LED Dedicated Fire Rated Housing - Two Hour Fire & Sound Dampening Rated

Source: 16W max.

(Compatible with PRISM, Iolite, Cobalt, Marquise, Onyx, Opal)

Type

Project

Catalog No.

Notes

PRODUCT DESCRIPTION

Specification grade fire-rated new construction housing. The double wall fixture incorporates a non-combustible fiber insulation to prevent passage of flames, toxic gases, ignitable gasses into ceiling plenums. The cULus listed housing is rated for a minimum of two hours protection. The noncombustible fiber fill also acts as sound deadening material eliminating the transfer of sound between floors. Suitable for commercial, multi-family and residential applications.

FEATURES

- Rated for direct contact with insulation
- cULus classified Two Hour Fire Rating
- cULus listed for damp location and through branch circuit wiring
- 24-1/2" Bar hangers with captive nails & alignment feet
- Accommodates 1-3/4" maximum ceiling thickness

CONSTRUCTION

Plaster Frame: High quality 0.03" steel die cut one piece frame.

Housing: Die formed 20 gauge galvanized steel construction. Housing interior is comprised of a flexible non-combustible insulation.

Air Flow Restriction: Housing has factory installed gaskets to restrict airflow from room into ceiling plenum to <2CFM (cubic feet per minute) in accordance with ASTM-283 Air-Tight requirements.

Bar Hangers: Two 13-3/4" to 24-1/2" adjustable bar hangers with captive nails are included on frame. Bar hangers are parallel to junction box, but can be repositioned 90° perpendicular to junction box if desired. "L" Shaped bar hanger foot to align to bottom of construction joist. A T-Bar notch allow for easy installation in a suspended ceiling.

Installation: Classified for use in two hour fire rated L500 Series floor-ceiling designs in the UL Fire Resistance Directory. Mark Spacing, number of luminaires not to exceed the ratio, one per 25sq ft of the total ceiling area, with minimum separation of 3ft between luminaires.

ELECTRICAL

Input Voltage: 120V or 120/277V (must specify)
Socket: Quick connect for LED reflectors
Wattage: 16W max.
Dimming: Triac, ELV or 0-10V (must specify)

COMPATIBILITY

NLPR-4 - PRISM Series
NIR-4 - Iolite Retrofit Series
NLCBC-4 / NLCBC2-4 - Cobalt Series
NRMC-4 - Marquise I Retrofit Series
NRMC2-4 - Marquise II Retrofit Series
NOX-4 - Onyx Series
NLOPAC-R4 - Opal Series

Junction Box: Prewired 0.03" thick galvanized steel, contains seven 1/2" knockouts and four Romex pryouts with strain relief and snap on covers. All leads are #18AWG wire, the ground wire is connected to the bottom, and quick connectors are supplied on all leads. Through branch circuit wiring, (4-in, 4-out).

Quick Connect Feature: Housing contains three UL approved quick connections that allow insertion of 1/4" stripped solid or tinned standard conductors to be inserted into the connector. Connectors are pre-attached to fixture power, common, and ground circuits.

Sound Deadening: STC tested by a certified acoustical testing lab. STC (Sound Transfer Class) will only change by 1 point when NFBIC housing is installed.

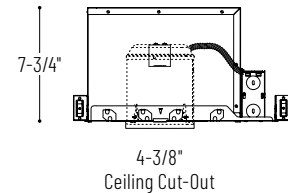
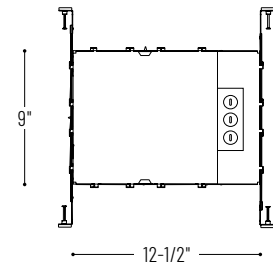
Emergency: Housing can be specified with connections for emergency battery installation (Cobalt only). Requires top access. Must specify battery with remote test switch separately, NEPK-BSL17C-C2U.

LABELS AND LISTINGS

- cULus Classified for Two Hour Fire Rating
- cULus Listed for Wet Locations when used with compatible reflectors
- Meets or exceeds ASTM-283 Air-Tight requirements
- ANSI/UL 263
- ANSI/UL 1598
- STC tested for sound transfer



PRODUCT IMAGES & DIMENSIONS



4" Recessed LED Dedicated Fire Rated Housing

Catalog No.

- NFBIC-4LMRAT** = 4" LED Dedicated Fire Rated Housing, 120/277V input; Triac/ELV dimming
NFBIC-4LMRAT/4W = 4" LED Dedicated Fire Rated Housing, 120/277V input; Triac/ELV/0-10V dimming (Cobalt only - LE4 required)
NFBIC-4LMRAT/PEM = 4" LED Dedicated Fire Rated Housing, 120V input; Triac/ELV dimming and Pre-Wired for Remote Emergency (Cobalt only - EM required)
NFBIC-4LMRAT/6WPEM = 4" LED Dedicated Fire Rated Housing, 120/277V input; Triac/ELV/0-10V dimming and Pre-Wired for Remote Emergency (Cobalt only - LE4EM required)

Optional Accessories

Description

NEPK-BSL17C-C2U = Remote Emergency Battery w/Test Switch

Example: **NFBIC-4LMRAT** = 4" LED Dedicated Fire Rated Housing, 120V input; Triac/ELV dimming