

NHIC-501QAT

5" IC Airtight Line Voltage New Construction Housing

Source: 75W Max. (Varies by trim)

Type

Project

Catalog No.

Notes

PRODUCT DESCRIPTION

New construction housing for use in insulated ceilings can be in direct contact with insulation. Airtight construction provides energy savings by reducing the flow of air through the ceiling. The housing is labeled for use with Nora 5" line voltage trims and compatible with all LED retrofits.

FEATURES

- IC Airtight energy saving by reducing the flow of air through the ceiling
- Rated for direct contact with insulation
- cULus listed for damp location and through branch circuit wiring
- Quick connect provided
- 24-1/2" Bar hangers with captive nails and alignment foot
- Accommodates 1-3/4" maximum ceiling thickness

CONSTRUCTION

Frame: High quality 0.032 steel die cut one piece frame.

Housing: 0.040 steel housing with riveted cap adjusts to maximum ceiling thickness of 1-3/4". Constructed as spot welded cylindrical wrap capped with a riveted dome.

Air Flow Restriction: Housing has factory installed gaskets to restrict airflow from room into ceiling plenum to <2CFM (cubic feet per minute) in accordance to ASTM E283.

Clearance: "IC" Insulated ceiling housings are direct contact rated. Not to be used in direct contact with spray foam insulation.

Socket: Socket is free floating and installs to eyeball, gimbal ring and trims equipped with socket brackets. Protective cap included to protect socket interior during ceiling painting.

Bar Hangers: Two 13-3/4" to 24-1/2" adjustable bar hangers with captive nails are included on frame. Hanger bars have T-Bar slot and alignment feet. Bar hangers are parallel to junction box, but can be repositioned 90° perpendicular to junction box if desired. "L" Shaped bar hanger foot to align to bottom of construction joist. A T-Bar notch allows easy installation in a suspended ceiling.

Junction Box: Prewired 25 cubic inch 0.064" thick galvanized steel, with six 1/2" trade size knockouts and hinged junction box door. All leads are #18AWG wire, the ground wire is connected to the bottom, and quick connectors are supplied on all leads. Maximum of 8 no. 12 AWG through branch circuit conductors suitable for at least 90°C permitted in junction box.

Romex Strain Relief: Junction box includes two Romex tabs with two slots at each tab for NM-cables of 12/2 to 14/2. The strain relief allows for easy installation and less materials.

Quick Connect Feature: Housing contains three UL approved quick connections that allow insertion of 1/4" stripped solid or tinned standard conductors to be inserted into the connector. Connectors are pre-attached to fixture power, common, and ground circuits.

Thermal Protector: Standard UL thermal protector rated for 90°C is affixed to inner top surface of housing.

ELECTRICAL

Input Voltage: 120V

Socket: Medium base

Lamp: Lamp type based on trim selection

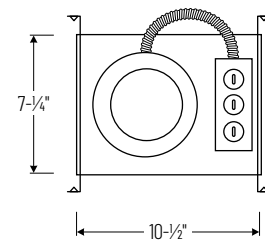
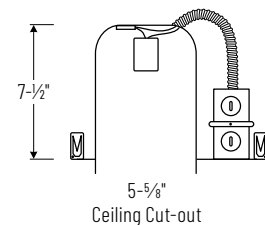
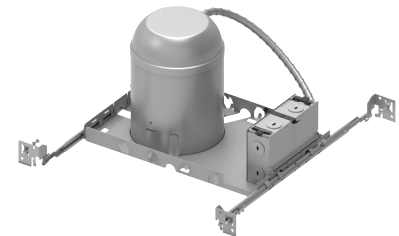
Wattage: 75W max. (wattage varies based on trim selection - can be labeled for lower wattages)

LABELS AND LISTINGS

- cULus Listed for Damp Locations w/ Feed Through (Wet Locations when used with designated trims)
- Airtight in accordance to ASTM E283
- NYC Approved: Calendar #43895



PRODUCT IMAGES & DIMENSIONS



5" IC Airtight Line Voltage New Construction Housing

Housing Type

NHIC-501QAT: 5" IC Airtight Line Voltage New Construction Housing

Example: **NHIC-501QAT** = 5" IC Airtight Line Voltage New Construction Housing