

# NL-3320

## 3" Round Adjustable Pinhole

Type

Project

Catalog No.

Notes

### FEATURES

**Trim:** Metal trim with 1" pinhole that can rotate 360° horizontally. Gimbal ring allows lamp to be mounted on top of the trim and adjustable up to 35°. Separate trim ring available in custom combination of ring finishes (consult factory).

**Mounting:** Trim includes three trim clips that securely mount trim in housing.

### COMPATIBLE HOUSINGS

Compatible with Line Voltage and Low Voltage housings. See individual specification sheets for more information.

### COMPATIBLE LAMP / HOUSINGS

#### Low Voltage:

**Important:** Do not use glass lens (provided) when already using lamp with glass cover  
50W 12V MR16 (NL-301 Series; NLIC-301 Series; NLR-304 Series; NLR-305 Series)

#### Line Voltage:

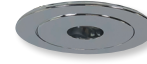
50W 120V MR16 GU10 Max. (NH-350AT; NHIC-350AT; NHR-354AT)

### LABELS AND LISTINGS

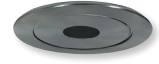
cULus Listed for Damp Location when used with compatible housing.



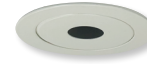
### Product Images and Dimensions



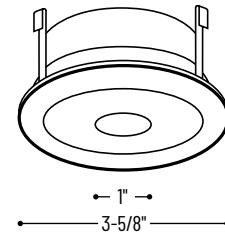
**NL-3320C**  
Chrome Trim



**NL-3320N**  
Natural Metal Trim



**NL-3320W**  
White Trim



## 3" Round Adjustable Pinhole

Catalog No.

**NL-3320C** = Chrome Trim

**NL-3320N** = Natural Metal Trim

**NL-3320W** = White Trim

## Compatible Housings

### Line Voltage

Catalog No.

**NH-350AT** = 3" Non-IC Air-Tight New Construction Housing / 50W max.

**NHIC-350AT** = 3" IC Air-Tight New Construction Housing / 50W max.

**NHR-354AT** = 3" Non-IC Air-Tight Remodel Housing / 50W max.

### Low Voltage

Catalog No.

**NLIC-301AT/1EL** = 3" IC Air-Tight New Construction Housing / 50W max.

**NLIC-301AT/20** = 3" IC Air-Tight New Construction Housing / 20W max.

**NLIC-301AT/37** = 3" IC Air-Tight New Construction Housing / 37W max.

**NLIC-301AT** = 3" IC Air-Tight New Construction Housing / 50W max.

**NL-301AT/1EL** = 3" Non-IC Air-Tight New Const. Housing / 50W max.

**NL-301AT/20** = 3" Non-IC Air-Tight New Const. Housing / 20W max.

**NL-301AT/37** = 3" Non-IC Air-Tight New Const. Housing / 37W max.

**NL-301AT** = 3" Non-IC Air-Tight New Const. Housing / 50W max.

**NLR-304AT/1EL** = 3" Non-IC Air-Tight Remodel Housing / 50W max.

**NLR-304AT/20** = 3" Non-IC Air-Tight Remodel Housing / 20W max.

**NLR-304AT/37** = 3" Non-IC Air-Tight Remodel Housing / 37W max.

**NLR-304AT** = 3" Non-IC Air-Tight Remodel Housing / 50W max.

**NLR-305AT/20** = 3" Non-IC Air-Tight Remodel Housing / 20W max.

**NLR-305AT/37** = 3" Non-IC Air-Tight Remodel Housing / 37W max.

**NLR-305AT** = 3" Non-IC Air-Tight Remodel Housing / 50W max.

Example: **NL-3320W** = 3" Round Adjustable Pinhole, White Trim