

# NL-3412

## 3" Square Reflector with Round Aperture

Type

Project

Catalog No.

Notes

### FEATURES

**Trim:** Precision spun 0.050 aluminum high grade reflector. Gimbal ring allows lamp to be mounted on top of the trim and adjustable up to 35°.

**Mounting:** Trim includes three trim clips that securely mount trim in housing.

### COMPATIBLE HOUSINGS

Compatible with Line Voltage and Low Voltage housings. See individual specification sheets for more information.

### COMPATIBLE LAMP / HOUSINGS

#### Low Voltage:

**Important:** Do not use glass lens (provided) when already using lamp with glass cover  
50W 12V MR16 (NL-301 Series; NLIC-301 Series; NLR-304 Series; NLR-305 Series)

#### Line Voltage:

50W 120V MR16 GU10 Max. (NH-350AT; NHIC-350AT; NHR-354AT)

### LABELS AND LISTINGS

cULus Listed for Damp Location when used with compatible housing.



### Product Images and Dimensions



**NL-3412BB**  
Specular Black Reflector  
Black Trim



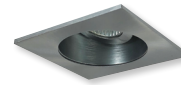
**NL-3412BW**  
Specular Black Reflector  
White Trim



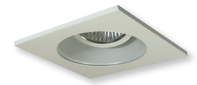
**NL-3412BZ**  
Bronze Reflector  
Bronze Trim



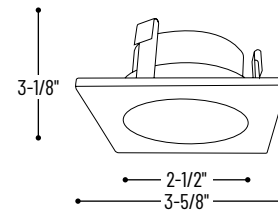
**NL-3412CW**  
Specular Clear Reflector  
White Trim



**NL-3412NN**  
Natural Metal Reflector  
Natural Metal Trim



**NL-3412WW**  
Specular White Reflector  
White Trim



## 3" Square Reflector with Round Aperture

Catalog No.

**NL-3412BB** = Specular Black Reflector / Black Trim

**NL-3412BW** = Specular Black Reflector / White Trim

**NL-3412BZBZ** = Bronze Reflector / Bronze Trim

**NL-3412CW** = Specular Clear Reflector / White Trim

**NL-3412NN** = Natural Metal Reflector / Natural Metal Trim

**NL-3412WW** = Specular White Reflector / White Trim

## Compatible Housings

### Line Voltage

Catalog No.

**NH-350AT** = 3" Non-IC Air-Tight New Construction Housing / 50W max.

**NHIC-350AT** = 3" IC Air-Tight New Construction Housing / 50W max.

**NHR-354AT** = 3" Non-IC Air-Tight Remodel Housing / 50W max.

### Low Voltage

Catalog No.

**NLIC-301AT/IEL** = 3" IC Air-Tight New Construction Housing / 50W max.

**NLIC-3010AT/20** = 3" IC Air-Tight New Construction Housing / 20W max.

**NLIC-3010AT/37** = 3" IC Air-Tight New Construction Housing / 37W max.

**NLIC-3010AT** = 3" IC Air-Tight New Construction Housing / 50W max.

**NL-301AT/IEL** = 3" Non-IC Air-Tight New Const. Housing / 50W max.

**NL-3010AT/20** = 3" Non-IC Air-Tight New Const. Housing / 20W max.

**NL-3010AT/37** = 3" Non-IC Air-Tight New Const. Housing / 37W max.

**NL-3010AT** = 3" Non-IC Air-Tight New Const. Housing / 50W max.

**NLR-304AT/IEL** = 3" Non-IC Air-Tight Remodel Housing / 50W max.

**NLR-3040AT/20** = 3" Non-IC Air-Tight Remodel Housing / 20W max.

**NLR-3040AT/37** = 3" Non-IC Air-Tight Remodel Housing / 37W max.

**NLR-3040AT** = 3" Non-IC Air-Tight Remodel Housing / 50W max.

**NLR-305AT/20** = 3" Non-IC Air-Tight Remodel Housing / 20W max.

**NLR-305AT/37** = 3" Non-IC Air-Tight Remodel Housing / 37W max.

**NLR-305AT** = 3" Non-IC Air-Tight Remodel Housing / 50W max.

Example: **NL-3412CW** = 3" Square Reflector with Round Aperture, Specular Clear Reflector / White Trim