

NHIC-350AT

TRUE 3" IC Air-Tight Double Wall Line Voltage New Construction Housing

Source: 50W MR16 GU10 max.

Type _____

Project _____

Catalog No. _____

Notes _____

PRODUCT DESCRIPTION

New construction double wall housing for use in insulated ceilings can be in direct contact with insulation. Air-tight construction provides energy savings by reducing the flow of air through the ceiling. The housing is labeled for use with Nora 3" MR16 trims.

FEATURES

- IC Air-Tight energy saving by reducing the flow of air through the ceiling
- Rated for direct contact with insulation
- cULus listed for damp location and through branch circuit wiring
- Quick connect provided
- 24-1/2" Bar hangers with captive nails and alignment foot

CONSTRUCTION

Housing: 0.040 steel frame with integral bar hanger brackets. Brackets can accommodate longer 27" accessory flat bar hangers. Shipping screw installed to provide extra security for transformer during shipment - remove before installation.

Minimum Clearance: IC rated for direct contact with thermal insulation. Not to be used in direct contact with spray foam insulation.

Air Flow Restriction: Housing has factory installed gaskets to restrict airflow from room into ceiling plenum to <2CFM (cubic feet per minute) in accordance with ASTM-283 Air-Tight requirements.

Bar Hangers: Two 13-3/4" to 24-1/2" adjustable bar hangers with captive nails are included on frame. Hanger bars have T-Bar slot and alignment feet. Bar hangers are parallel to junction box, but can be repositioned 90° perpendicular to junction box if desired. "L" Shaped bar hanger foot to align to bottom of construction joist. A T-Bar notch allows easy installation in a suspended ceiling.

Junction Box: Prewired 15 cubic inch 0.060" thick galvanized steel, with six 1/2" knockouts, four Romex® pryouts, and snap on cover. All leads are #18AWG wire, the ground wire is connected to the bottom, and quick connectors are supplied on all leads. Through branch circuit wiring, (4-in, 4-out).

Thermal Protector: Standard UL thermal protector rated for 90°C is affixed to side wall surface of housing.

ELECTRICAL

Input Voltage: 120V

Socket: GU10

Lamp: MR16 (not included)

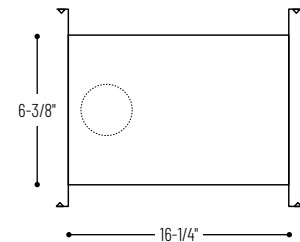
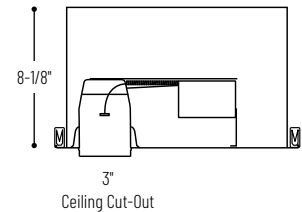
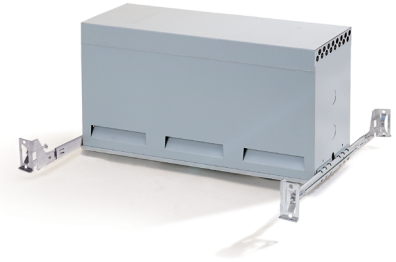
Wattage: 50W max.

LABELS AND LISTINGS

- cULus Listed for Damp Location w/ Feed Through (Wet Location when used with designated trims)
- Meets or exceeds ASTM-283 Air-Tight Requirements
- Washington State Approved



PRODUCT IMAGES & DIMENSIONS



TRUE 3" IC Air-Tight Double Wall Line Voltage New Construction Housing

Housing Type

NHIC-350AT: TRUE 3" IC Air-Tight Double Wall Line Voltage New Construction Housing

Example: **NHIC-350AT** = TRUE 3" IC Air-Tight Double Wall Line Voltage New Construction Housing