

NL-3410

3" Square Baffle with Round Aperture

Type

Project

Catalog No.

Notes

FEATURES

Trim: Precision spun 0.040 aluminum baffle with deep grooves to reduce aperture glare. Non-reflective painted finishes. Gimbal ring allows lamp to be mounted on top of the trim and adjustable up to 35°.

Mounting: Trim includes three trim clips that securely mount trim in housing.

COMPATIBLE HOUSINGS

Compatible with Line Voltage and Low Voltage housings. See individual specification sheets for more information.

COMPATIBLE LAMP / HOUSINGS

Low Voltage:

Important: Do not use glass lens (provided) when already using lamp with glass cover
50W 12V MR16 (NL-301 Series; NLIC-301 Series; NLR-304 Series; NLR-305 Series)

Line Voltage:

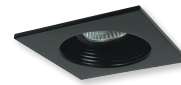
50W 120V MR16 GU10 Max. (NH-350AT; NHIC-350AT; NHR-354AT)

LABELS AND LISTINGS

cULus Listed for Damp Location when used with compatible housing.



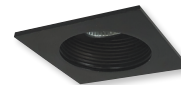
Product Images and Dimensions



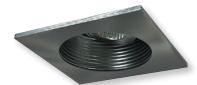
NL-3410BB
Black Baffle
Black Trim



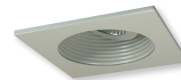
NL-3410BW
Black Baffle
White Trim



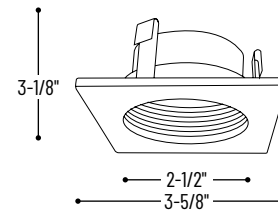
NL-3410BZ
Bronze Baffle
Bronze Trim



NL-3410NN
Natural Metal Baffle
Natural Metal Trim



NL-3410WW
White Baffle
White Trim



3" Square Baffle with Round Aperture

Catalog No.

- NL-3410BB** = Black Baffle / Black Trim
- NL-3410BW** = Black Baffle / White Trim
- NL-3410BZBZ** = Bronze Baffle / Bronze Trim
- NL-3410NN** = Natural Metal Baffle / Natural Metal Trim
- NL-3410WW** = White Baffle / White Trim

Compatible Housings

Line Voltage

Catalog No.

- NH-350AT** = 3" Non-IC Air-Tight New Construction Housing / 50W max.
- NHIC-350AT** = 3" IC Air-Tight New Construction Housing / 50W max.
- NHR-354AT** = 3" Non-IC Air-Tight Remodel Housing / 50W max.

Low Voltage

Catalog No.

- NLIC-301AT/1EL** = 3" IC Air-Tight New Construction Housing / 50W max.
- NLIC-3010AT/20** = 3" IC Air-Tight New Construction Housing / 20W max.
- NLIC-3010AT/37** = 3" IC Air-Tight New Construction Housing / 37W max.
- NLIC-3010AT** = 3" IC Air-Tight New Construction Housing / 50W max.
- NL-301AT/1EL** = 3" Non-IC Air-Tight New Const. Housing / 50W max.
- NL-3010AT/20** = 3" Non-IC Air-Tight New Const. Housing / 20W max.
- NL-3010AT/37** = 3" Non-IC Air-Tight New Const. Housing / 37W max.
- NL-3010AT** = 3" Non-IC Air-Tight New Const. Housing / 50W max.
- NLR-304AT/1EL** = 3" Non-IC Air-Tight Remodel Housing / 50W max.
- NLR-3040AT/20** = 3" Non-IC Air-Tight Remodel Housing / 20W max.
- NLR-3040AT/37** = 3" Non-IC Air-Tight Remodel Housing / 37W max.
- NLR-3040AT** = 3" Non-IC Air-Tight Remodel Housing / 50W max.
- NLR-305AT/20** = 3" Non-IC Air-Tight Remodel Housing / 20W max.
- NLR-305AT/37** = 3" Non-IC Air-Tight Remodel Housing / 37W max.
- NLR-305AT** = 3" Non-IC Air-Tight Remodel Housing / 50W max.

Example: **NL-3410WW** = 3" Square Baffle with Round Aperture, White Baffle / White Trim