

Installation Instructions

NT-320

Outlet Box Cover

READ PRIOR TO ATTEMPTING INSTALLATION
ALWAYS TURN OFF MAIN POWER BEFORE INSTALLATION
INSTALLATION SHOULD BE CARRIED OUT BY YOUR LOCAL ELECTRICIAN

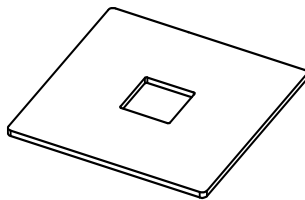
⚠ IMPORTANT - This equipment is intended to be installed only by qualified personnel. The installation must be made in accordance with the current edition of the National Electrical Code and all applicable state and local building codes. The final installation must be approved by the appropriate, qualified electrical/building inspector(s). Improper installation may result in a fire or electrical hazard. Be sure the electrical power to the circuit has been disconnected before installing this electrical system.

⚠ IMPORTANT - Cet équipement est destiné à être installé uniquement par du personnel qualifié. L'installation doit être faite conformément à l'édition actuelle du Code national de l'électricité et à tous les codes de construction locaux et nationaux applicables. L'installation finale doit être approuvée par un ou plusieurs inspecteurs qualifiés en électricité / bâtiment. Une installation incorrecte peut entraîner un incendie ou un risque électrique. Assurez-vous que l'alimentation électrique du circuit a été déconnectée avant d'installer ce système électrique.

COMPATIBLE TRACK ONE-CIRCUIT FEEDS	COMPATIBLE TRACK TWO-CIRCUIT FEEDS	DESCRIPTION
NT-312	NT-2312	"I" Connector
NT-313	NT-2313	"L" Connector
NT-314	NT-2314	"T" Connector
NT-315	NT-2315	"X" Connector
NT-316	NT-2316	End Feed

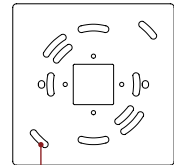
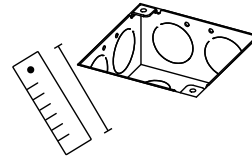


PACKAGING CONTENTS



DRILLING OUTLET BOX COVER

1. Measure junction box screw locations to determine where to drill outlet box cover.
2. Carefully pre-drill mounting holes for junction box. (screws are not included)
3. Determine mounting position of track feed using the back plate of track feed and pre-drill hole(s).

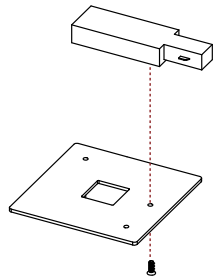


Universal knockouts fit most junction boxes

INSTALLATION

1. Turn all power off before installation.
2. Mount track feed to outlet box with self tapping #6, 3/8" or 1/2" flat head screw(s). (Figure 1)
3. Run power feed cables through cover and wire to input wires according to NEC code. (Figure 2)
4. Place connections inside junction box and attach outlet box. (Figure 3)
5. Installation complete, attach track system to feed and turn power on.

Figure 1



Self tapping #6, 3/8" or 1/2" flat head screw

Figure 2

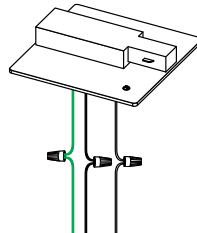


Figure 3

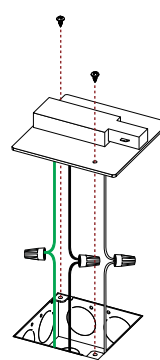


Figure 4

