

Installation Instructions

NT-368

Pendant to Track Adapter

READ PRIOR TO ATTEMPTING INSTALLATION
ALWAYS TURN OFF MAIN POWER BEFORE INSTALLATION
INSTALLATION SHOULD BE CARRIED OUT BY YOUR LOCAL ELECTRICIAN

⚠ IMPORTANT - This equipment is intended to be installed only by qualified personnel. The installation must be made in accordance with the current edition of the National Electrical Code and all applicable state and local building codes. The final installation must be approved by the appropriate, qualified electrical/building inspector(s). Improper installation may result in a fire or electrical hazard. Be sure the electrical power to the circuit has been disconnected before installing this electrical system.

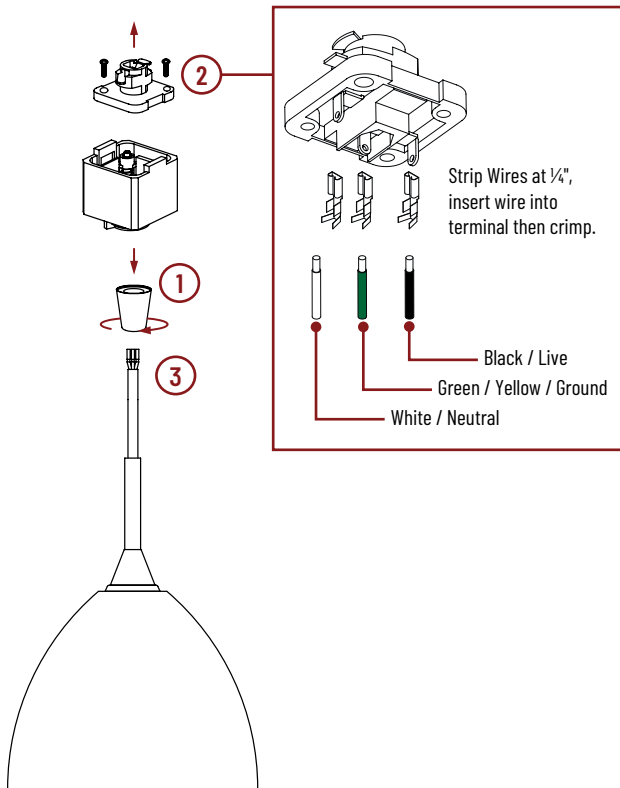
⚠ IMPORTANT - Cet équipement est destiné à être installé uniquement par du personnel qualifié. L'installation doit être faite conformément à l'édition actuelle du Code national de l'électricité et à tous les codes de construction locaux et nationaux applicables. L'installation finale doit être approuvée par un ou plusieurs inspecteurs qualifiés en électricité / bâtiment. Une installation incorrecte peut entraîner un incendie ou un risque électrique. Assurez-vous que l'alimentation électrique du circuit a été déconnectée avant d'installer ce système électrique.

⚠ MAXIMUM WEIGHT: 5 LB

ADAPTER ASSEMBLY

1. Remove track coupler and place over pendant cord.
2. Remove screws from track adapter and lift the contact plate.
3. Pull pendant cord up through the open track adapter and attach the gold leads provided to the ends of the pendant cord wire.

NOTE: Make sure that the pendant cord is at your desired length and under 5 lb



INSTALLATION INSTRUCTIONS

INSTALLATION INSTRUCTIONS TO SINGLE CIRCUIT TRACK SYSTEMS:

1. Match the polarity line on the fixture to the polarity groove on track.
2. Turn the fixture counter-clockwise until the contact head can be inserted into the track.
3. Push the fixture straight into track.
4. Rotate the contact head adapter clockwise until it locks into place.

REMOVAL INSTRUCTIONS:

1. Turn off power to track before removing fixture.
2. Pull track adapter sleeve down and twist the adapter until latch unlocks.
3. Remove the fixture from track.

