

# NEXUS

## 24V Dimmer + Driver Switch

Input Voltage: 120V

Output Voltage: 24V

Type

Project

Catalog No.

Notes

### PRODUCT DESCRIPTION

NEXUS simplifies LED array lighting systems by combining an in-wall LED dimmer switch and power supply into a single integrated unit. NEXUS mounts in a standard in-wall switch box, accepts 120VAC and converts to 24V.

### FEATURES

- LED Driver + In-Wall Dimmer Switch in one unit
- Simplifies LED installation by eliminating compatibility issues between driver and dimmer.
- Fits in a standard recessed electrical box.
- 100% - 5% Smooth dimming
- No minimum load
- Single pole preset dimmer with on / off switch
- Adjustable voltage output dial to address voltage drop
- Includes voltage barrier partition to install high and low voltage circuit in same switchbox
- No derating required when ganging units (operates loads up to 80% for best performance)
- Power failure memory: If power is interrupted, NEXUS will return to setting prior to interruption.

### ELECTRICAL

**Input Voltage:** 120VAC, 50/60Hz

**Output Voltage:** 24V

**Power Factor:** >0.9 @ 120VAC 60Hz max load

**Total Harmonic Distortion (THD):** ≤20% @ 120VAC 60Hz max load. Tested to comply in accordance with IEC 61000-3-2

**Stand-by Power:** ≤0.5W

**Efficiency:** >91% @ 120VAC max load

**In-Rush Current:** Meets NEMA-410 requirement at any nominal input full sine wave voltage and maximum load at 25°C

**Leakage Current:** <500 µA @ 120VAC

**Surge Transient:** Tested to meet transient defined in IEC 6100-4-4; level 3 & IEC 6100-4-5, level 3

**Dimming:** Output voltage is adjustable via sliding lever Voltage Adjustment Dial: Increases output +1V to compensate for voltage drop from control to luminaire

**Startup Time:** The main supply output voltages remain within the regulation limit of +/- 3%

**Protections:** Short circuit, thermal runaway, and over voltage

**Output Ripple Current:** ≤20% of the rated output current @ 120VAC max load.

### COMPATIBLE FIXTURES

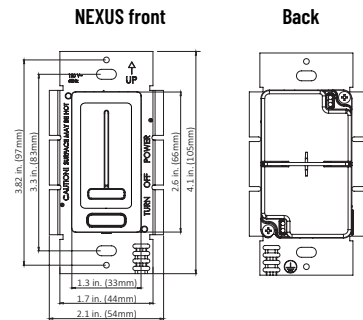
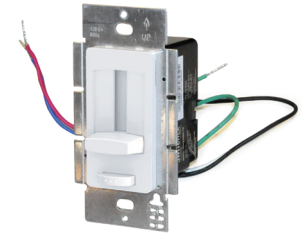
NEXUS is compatible with 24V systems

<a href="#">NUTP5</a>	24V Hy-Brite Tape Light
<a href="#">NUTP8</a>	24V High Output Tape Light
<a href="#">NUTP9</a>	24V Side-Lit Tape Light
<a href="#">NUTP14</a>	24V COB High Output Tape Light
<a href="#">NUTP15</a>	24V COB Standard Output Tape Light
<a href="#">NUTP51</a>	24V Continuous Hy-Brite Tape Light
<a href="#">NUTP71</a>	24V Continuous Standard Tape Light
<a href="#">NUTP81</a>	24V Continuous High Output Tape Light
<a href="#">NULB</a>	24V Lightbar Silk SBC

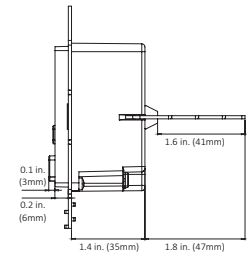
### LABELS AND LISTINGS

- cULus Listed (US & Canada) Low Voltage, Wall Recessed Power Units. #E472619
- FCC Approved. Complies with the limits for a Class B digital device, pursuant to Part 15 of the FCC Rules
- RoHS Certified
- CE Certified
- Conforms to NEC Code 725.136 (See Mechanical Diagram): Class 1 and Class 2 circuit in same enclosure must be separated by a barrier (partition) unless Class 2 circuit conductors are installed in accordance with 725.41 Class 1 Circuits.
- 5-year limited warranty from the date of shipment. This warranty does not include the additional accessories referenced in this specification sheet. Complete warranty details are available at [www.NoraLighting.com](http://www.NoraLighting.com)

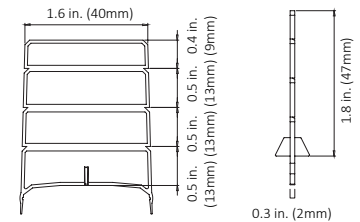
### PRODUCT IMAGES & DIMENSIONS



### Side w/ Voltage Barrier



### Voltage Barrier



## NEXUS - 24V 100W Dimmer + Driver Switch

Catalog No.

**NATL-SWEX60/24A** = 24V 60W Dimmer + Driver Switch, White finish

**NATL-SWEX100/24A** = 24V 100W Dimmer + Driver Switch, White finish

Example: **NATL-SWEX100/24A** = 24V 100W Dimmer + Driver Switch, White finish