

NLCB2-651

6" Cobalt Dedicated High Lumen Round Reflector

Source: 22W to 30W LED
1500lm or 2000lm

Type

Project

Catalog No.

Notes

PRODUCT DESCRIPTION

6" Cobalt dedicated series is cULus listed for use in with Cobalt high lumens housings. 6" luminaires deliver over 2000 lumens in a various color temperatures. Cobalt High Lumen Series intergrates a COB LED technology, giving bright spectacular light output and low power consumption.

FEATURES

- 1500lm or 2000lm LED packages
- 2700K, 3000K, 3500K, 4000K or Comfort Dim (Warm Dim) @ 90+ CRI
- 5-year limited warranty
- cULus listed for wet locations

SPECIFICATION

Trim: Aluminum spun reflector with deep set diffused lens for excellent visual comfort while providing high lumen output.

Mounting: Two torsion springs allow for easy and secure mounting in housing. Refer to housing for ceiling thickness.

ELECTRICAL

Lumens / Wattage:

15 = 1500lm / wattage varies by housing

20 = 2000lm+ / wattage varies by housing

(Delivered lumens will vary depending on CCT and finish)

Color Temperature: Dedicated CCT (2700K, 3000K, 3500K or 4000K)

Color Rendering Index: 90+CRI

Operating Temperature: 0°C to 25°C

Lifetime: 50,000 hours @ L70

Comfort Dim: Comfort Dim color tunes the temperature from a bright 3000K, to a romantic and comfortable 2000K on a gradual, even curve.

Dimming: Refer to housing for dimming

COMPATIBLE HOUSINGS

Trims are compatible with Cobalt High Lumen housings manufactured by Nora Lighting.

CATALOG NO. DESCRIPTION

NHICCB-615	6" IC New Construction (1500lm)
NHICCB-620	6" IC New Construction (2000lm)
NHCB-615	6" Non-IC New Construction (1500lm)
NHCB-620	6" Non-IC New Construction (2000lm)
NHRCB-615	6" Non-IC Remodel (1500lm)
NHRCB-620	6" Non-IC Remodel (2000lm)

ACCESSORIES

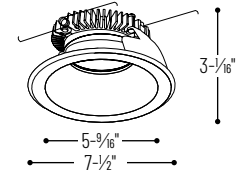
[NLCBC-60R](#): Round oversize ring used to cover ceiling cut-outs up to 8-1/4".

LABELS AND LISTINGS

- cULus Listed for Wet Locations
- [5-Year Limited Warranty](#)
- Patent #D797,977S; D871,644S; D824,568S
- Certified to the high efficacy requirements of California Title 24 JA8-2022 (IC housing only)
- FCC Compliant



PRODUCT IMAGES & DIMENSIONS



NLCBC2-651

6" Cobalt High Lumen Round Reflector



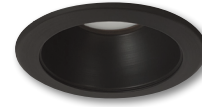
BB

Black Reflector
Black Flange



BW

Black Reflector
White Flange



BZ

Bronze Reflector
Bronze Flange



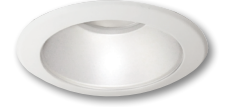
COCO

Copper Reflector
Copper Flange



DW

Diffused Clear Reflector
White Flange



HZW

Haze Reflector
White Flange



MPW

Matte Powder White Reflector
Matte Powder White Flange



NN

Natural Metal Reflector
Natural Metal Flange



WW

White Reflector
White Flange

6" Cobalt Dedicated High Lumen Round Reflector - Dedicated Housing Required

Lumens	Color Temperature	Finish
NLCB2-65115 = 1500lm	27 = 2700K	BB = Black Reflector / Black Flange
NLCB2-65120 = 2000lm	30 = 3000K	BW = Black Reflector / White Flange
	35 = 3500K	BZBZ = Bronze Reflector / Bronze Flange
	40 = 4000K	COCO = Copper Reflector / Copper Flange
	CD = Comfort Dim	DW = Diffused Clear Reflector / White Flange
		HZW = Haze Reflector / White Flange
		MPW = Matte Powder White Reflector / Matte Powder White Flange
		NN = Natural Metal Reflector / Natural Metal Flange
		WW = White Reflector / White Flange

Optional Accessories

Description
NLCBC-60R-B = 6" Round Oversize Ring, Black
NLCBC-60R-BZ = 6" Round Oversize Ring, Bronze
NLCBC-60R-MPW = 6" Round Oversize Ring, Matte Powder White
NLCBC-60R-W = 6" Round Oversize Ring, White

Example: **NLCB2-6512035DW** = 6" Cobalt Dedicated High Lumen Round Reflector, 2000lm LED, 3500K, Diffused Clear Reflector / White Flange

PHOTOMETRICS

6" Cobalt Dedicated High Lumen Round Reflector

Type _____

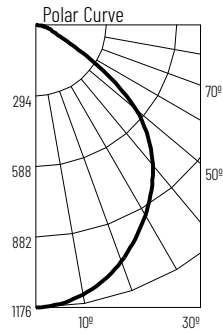
Project _____

Catalog No. _____

Notes _____

Test Information

Test Number: NTR1167
 Part Number: NLCB2-6512040WW
 Lumens: 2495lm
 Wattage: 27.58W
 Efficacy: 90lpw
 CCT / CRI: 4000K / 90 CRI
 Spacing Criteria (0°-180°): 1.18
 Spacing Criteria (90°-270°): 1.18



Illuminance at a Distance

Distance from Luminaire	FC at Nadir	Beam Diameter
6'	32.7fc	13'-5"
9'	14.5fc	20'-1"
12'	8.2fc	26'-11"
15'	5.2fc	33'-7"
18'	3.6fc	40'-4"

Zonal Lumen Summary

Zone	Lumens	% Luminaire
0-30	875	35.1
0-40	1402	56.2
0-60	2252	90.3
0-90	2470	99
90-180	24	1
0-180	2495	100

Candela Table

Vertical Angles	Candela
0	1176
5	1172
15	1102
25	984
35	844
45	668

Lumen Output Multipliers

Color Temperature: 2700K (0.76), 3000K (0.91), 3500K (0.95), 4000K (1.00)