

NLCB2-652

6" Cobalt Dedicated High Lumen Round Baffle

Source: 22W to 30W LED
1500lm or 2000lm

Type

Project

Catalog No.

Notes

PRODUCT DESCRIPTION

6" Cobalt dedicated series is cULus listed for use in with Cobalt high lumens housings. 6" luminaires deliver over 2000 lumens in a various color temperatures. Cobalt High Lumen Series intergrates a COB LED technology, giving bright spectacular light output and low power consumption.

FEATURES

- 1500lm or 2000lm LED packages
- 2700K, 3000K, 3500K, 4000K or Comfort Dim (Warm Dim) @ 90+ CRI
- 5-year limited warranty
- cULus listed for wet locations

SPECIFICATION

Trim: Aluminum spun baffle with deep grooves to reduce aperture glare while providing high lumen output.

Mounting: Two torsion springs allow for easy and secure mounting in housing. Refer to housing for ceiling thickness.

ELECTRICAL

Lumens / Wattage:

15 = 1500lm / wattage varies by housing

20 = 2000lm+ / wattage varies by housing

(Delivered lumens will vary depending on CCT and finish)

Color Temperature: Dedicated CCT (2700K, 3000K, 3500K or 4000K)

Color Rendering Index: 90+ CRI

Operating Temperature: 0°C to 25°C

Lifetime: 50,000 hours @ L70

Comfort Dim: Comfort Dim color tunes the temperature from a bright 3000K, to a romantic and comfortable 2000K on a gradual, even curve.

Dimming: Refer to housing for dimming

COMPATIBLE HOUSINGS

Trims are compatible with Cobalt High Lumen housings manufactured by Nora Lighting.

CATALOG NO. DESCRIPTION

NHICCB-615	6" IC New Construction (1500lm)
NHICCB-620	6" IC New Construction (2000lm)
NHCB-615	6" Non-IC New Construction (1500lm)
NHCB-620	6" Non-IC New Construction (2000lm)
NHRCB-615	6" Non-IC Remodel (1500lm)
NHRCB-620	6" Non-IC Remodel (2000lm)

ACCESSORIES

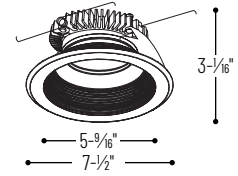
[NLCBC-60R](#): Round oversize ring used to cover ceiling cut-outs up to 8-1/4".

LABELS AND LISTINGS

- cULus Listed for Wet Locations
- [5-Year Limited Warranty](#)
- Patent #D797,977S; D871,644S; D824,568S
- Certified to the high efficacy requirements of California Title 24 JA8-2022 (IC housing only)
- FCC Compliant



PRODUCT IMAGES & DIMENSIONS



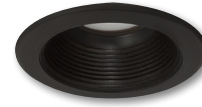
NLCBC2-652
6" Cobalt High Lumen Round Baffle



BB
Black Baffle
Black Flange



BW
Black Baffle
White Flange



BZ
Bronze Baffle
Bronze Flange



MPW
Matte Powder White Baffle
Matte Powder White Flange



NN
Natural Metal Baffle
Natural Metal Flange



WW
White Baffle
White Flange

6" Cobalt Dedicated High Lumen Round Baffle - Dedicated Housing Required

Lumens	Color Temperature	Finish
NLCB2-65215 = 1500lm	27 = 2700K	BB = Black Baffle / Black Flange
NLCB2-65220 = 2000lm	30 = 3000K	BW = Black Baffle / White Flange
	35 = 3500K	BZBZ = Bronze Baffle / Bronze Flange
	40 = 4000K	MPW = Matte Powder White Baffle / Matte Powder White Flange
	CD = Comfort Dim	NN = Natural Metal Baffle / Natural Metal Flange
		WW = White Baffle / White Flange

Optional Accessories

Description

- NLCBC-60R-B** = 6" Round Oversize Ring, Black
- NLCBC-60R-BZ** = 6" Round Oversize Ring, Bronze
- NLCBC-60R-MPW** = 6" Round Oversize Ring, Matte Powder White
- NLCBC-60R-W** = 6" Round Oversize Ring, White

Example: **NLCB2-6522035WW** = 6" Cobalt Dedicated High Lumen Round Baffle, 2000lm LED, 3500K, White Baffle / White Flange

PHOTOMETRICS

6" Cobalt Dedicated High Lumen Round Baffle

Type _____

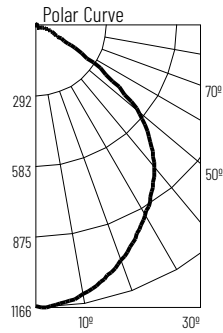
Project _____

Catalog No. _____

Notes _____

Test Information

Test Number: NTR1146R1
 Part Number: NLB2-6522040WW
 Lumens: 2476lm
 Wattage: 27.74W
 Efficacy: 89lpw
 CCT / CRI: 4000K / 90 CRI
 Spacing Criteria (0°-180): 1.18
 Spacing Criteria (90°-270): 1.18



Illuminance at a Distance

Distance from Luminaire	FC at Nadir	Beam Diameter
6'	32.4fc	13'-5"
9'	14.4fc	20'-1"
12'	8.1fc	26'-10"
15'	5.2fc	33'-6"
18'	3.6fc	40'-2"

Zonal Lumen Summary

Zone	Lumens	% Luminaire
0-30	1398	35.2
0-40	1398	56.5
0-60	2236	90.3
0-90	2451	99
90-180	25	1
0-180	2476	100

Candela Table

Vertical Angles	Candela
0	1166
5	1165
15	1095
25	981
35	845
45	662

Lumen Output Multipliers

Color Temperature: 2700K (0.76), 3000K (0.91), 3500K (0.95), 4000K (1.00)