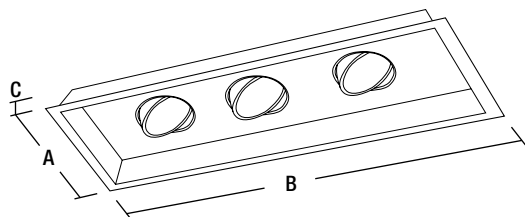


NMRT-653 Series

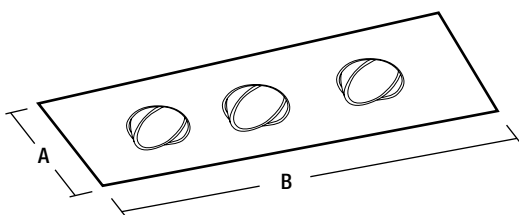
Par 38 LED Multiple Lighting System Trims

Source: 25W PAR 38 LED Lamp

TRIM DIMENSIONS



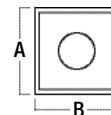
Adjustable: 45°



DIMENSIONS

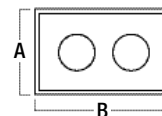
CONFIGURATION

1 Row / 1 Lamp
 A: Width: 9-3/4"
 B: Length: 9-3/4"
 C: Height: 2-1/4"



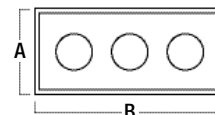
CONFIGURATION

1 Row / 2 Lamps
 A: Width: 9-3/4"
 B: Length: 18"
 C: Height: 2-1/4"



CONFIGURATION

1 Row / 3 Lamps
 A: Width: 9-3/4"
 B: Length: 23-3/4"
 C: Height: 2-1/4"



FEATURES

Trim

Adjustable metal gimbal ring can be adjusted up to 45°.

Mounting

Trim includes two "V" torsion springs to mount trim securely to housing.

Compatible Multiple Lighting System Housings

Compatible with Line Voltage housings.

See individual specification sheets for more information.

Lamp

Line Voltage

150W PAR38 Maximum

Labels and Listings

cULus Listed for Damp Location when used with compatible housing.

NMRT

Series	# of Rows	Face Plate	# of Lamps	Trim	Face/Flange Finish
NMRT=MLS Trim	1=1 Row (1 to 3 lamps only)	(Blank) = Regress	1=1 Lamp	653=MAR38	BW= Black Face, White Flange
			2=2 Lamps		SS= Silver Face, Silver Flange
			3=3 Lamps		WW= White Face, White Flange