

# NUD-68 Series

Bravo FROST 120V LED Linear

Source: 7W LED

500lm/ft.

Type

Project

Catalog No.

Notes

## PRODUCT DESCRIPTION

Nora Lighting's low-profile, fixtures provide excellent and even illumination on all surfaces. At only 7 watts per foot, Bravo FROST produces 500 lumens at a crisp sharp 95+ CRI. Each Bravo Frost contains its own driver allowing a 120V feed and longer single runs than low voltage systems. It is one of the most energy efficient products in the market. LED technology eliminates forward heat from the fixture, also no UV or infrared rays to harm artwork or heat sensitive foods.

## FEATURES

- Architectural extruded aluminum construction
- Symmetrical internal reflectors produce broad even light
- Frosted lens eliminates LED diode image
- 120V linear system
- 500 lumens / 7 Watts per foot
- 2700K, 3000K, 4000K or 5000K @ 90+ CRI
- Available in 4 different lengths: 12", 18", 24", 32"
- Linkable up to 300 Watts fixtures (about 43')
- Less than 1" in depth.
- Self contained dimmable electronic driver in each unit
- 0° to 90° adjustable mounting brackets included
- Bronze and White finishes
- Rated for 50,000 hours @ L70

## INCLUDED WITH EVERY BRAVO FROST

(2) Adjustable mounting clips (0° - 90°) and (1) End-to-End Connector

## HOUSING

Extruded aluminum with frosted lens.

## MOUNTING

Two adjustable mounting brackets (0° - 90°) are included with each luminaire.

## ELECTRICAL

**Input Voltage:** 120V

**Lumens / Wattage:** 500lm / 7W per foot

**Color Temperature:** Warm White (2700K, 3000K) Cool White (4000K, 5000K)

**Color Rendering Index:** 90+ CRI

**Life Expectancy:** 50,000 hours @ L70

**Max Run Length:** 300W max.

**Dimming:** Electronic Low Voltage

## ACCESSORIES

**NUA-602:** Hardwire Junction Box

**NUA-604:** 72" 3-Wire Hardwire Connector

**NUA-605:** 72" Cord and Plug

**NUA-603:** End-to-End Connector

**NUA-606:** 6" Jumper Cable

**NUA-612:** 12" Jumper Cable

**NUA-624:** 24" Jumper Cable

**NUA-672:** 72" Jumper Cable

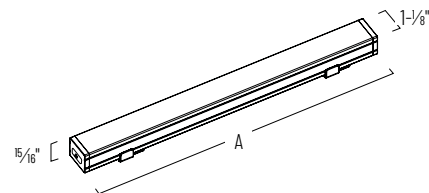
**NUA-609:** Adjustable Mounting Brackets (set of two - included with each luminaire)

## LABELS AND LISTINGS

- cULus Listed for Dry Location
- ENERGY STAR® Certified
- 5-Year Limited Warranty

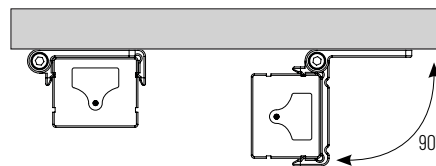


## PRODUCT IMAGES & DIMENSIONS



	Length (A)
<b>NUD-6812</b>	12-5/8"
<b>NUD-6818</b>	18-5/8"
<b>NUD-6824</b>	24-1/4"
<b>NUD-6832</b>	32-15/16"

## 0-90° ADJUSTABILITY



## Bravo FROST 120V LED Linear

Length / Lumen / CCT / Finish

**NUD-6812/27BZ** = 12" / 520lm / 2700K / Bronze

**NUD-6812/30W** = 12" / 520lm / 3000K / White

**NUD-6812/40W** = 12" / 520lm / 4000K / White

**NUD-6812/50W** = 12" / 520lm / 5000K / White

**NUD-6818/27BZ** = 18" / 757lm / 2700K / Bronze

**NUD-6818/27W** = 18" / 757lm / 2700K / White

**NUD-6818/40W** = 18" / 757lm / 4000K / White

**NUD-6818/50W** = 18" / 757lm / 5000K / White

**NUD-6824/27W** = 24" / 978lm / 2700K / White

**NUD-6824/40W** = 24" / 978lm / 4000K / White

**NUD-6824/50W** = 24" / 978lm / 5000K / White

**NUD-6832/27W** = 32" / 1212lm / 2700K / White

**NUD-6832/30BZ** = 32" / 1212lm / 3000K / Bronze

**NUD-6832/30W** = 32" / 1212lm / 3000K / White

**NUD-6832/40W** = 32" / 1212lm / 4000K / White

**NUD-6832/50W** = 32" / 1212lm / 5000K / White

Example: **NUD-6812/30W** = 12" Bravo FROST, 3000K, White finish

## Accessories

Description

**NUA-602BZ** = Hardwire Junction Box, Bronze Finish

**NUA-602W** = Hardwire Junction Box, White Finish

**NUA-604B** = 72" 3-Wire Hardwire Connector, Black Finish

**NUA-604W** = 72" 3-Wire Hardwire Connector, White Finish

**NUA-605BZ** = 72" Cord and Plug, Bronze Finish

**NUA-605W** = 72" Cord and Plug, White Finish

**NUA-603BZ** = End-to-End Connector, Bronze Finish

**NUA-603W** = End-to-End Connector, White Finish

**NUA-606W** = 6" Jumper Cable, White Finish

**NUA-612BZ** = 12" Jumper Cable, Bronze Finish

**NUA-612W** = 12" Jumper Cable, White Finish

**NUA-624BZ** = 24" Jumper Cable, Bronze Finish

**NUA-624W** = 24" Jumper Cable, White Finish

**NUA-672BZ** = 72" Jumper Cable, Bronze Finish

**NUA-672W** = 72" Jumper Cable, White Finish

**NUA-609BZ** = Adjustable Mounting Brackets, Bronze Finish

# NUD-68 Series

Bravo FROST 120V LED Linear  
Accessories

Type	
Project	
Catalog No.	
Notes	



Junction Box with On/Off Switch

**NUA-602BZ** Bronze  
**NUA-602W** White  
Junction box with on/off switch used to power Bravo FROST using jumper cable or NUA-604 (2-Wire Hardwire Connector)

D: 6-1/4"L x 3-5/8"W x 1"H



72" 2-Wire Hardwire Connector

**NUA-604B** Black  
**NUA-604W** White  
2-Wire connector use to hardwire fixture to NUA-602 (Junction Box)



72" Cord and Plug

**NUA-605B** Black  
**NUA-605W** White  
6' Grounded AC power cord to connect fixture to an outlet



Adjustable Mounting Brackets

**NUA-609BZ** Bronze  
Set of two brackets used angle fixture between 0° to 90°. Two brackets are included with each fixture.



End-to-End Connector

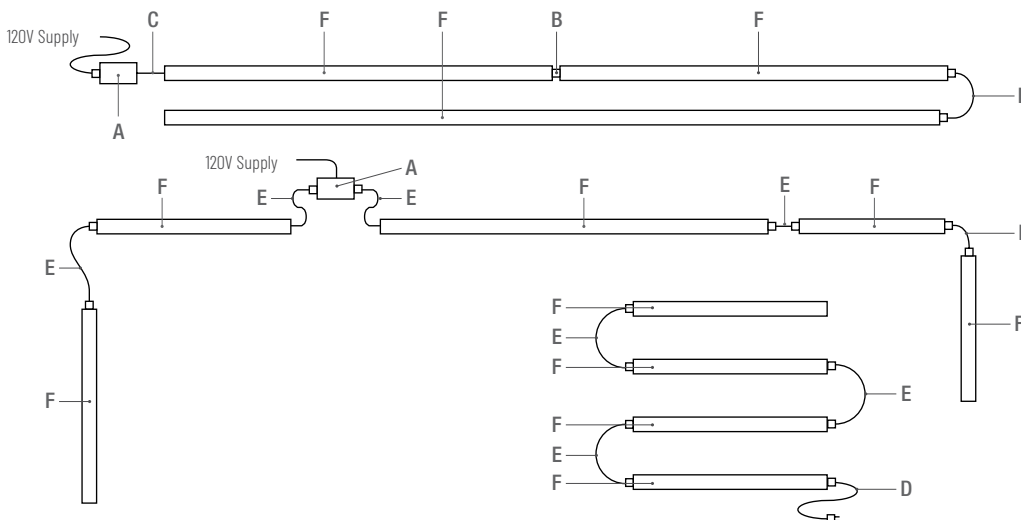
**NUA-603BZ** Bronze  
**NUA-603W** White  
Use to join two fixtures seamlessly together. One included with each fixture.



Jumper Cable

**NUA-606W** White  
**NUA-612B** Black  
**NUA-612W** White  
**NUA-624B** Black  
**NUA-624W** White  
**NUA-672B** Black  
**NUA-672W** White  
Used to join two fixtures together or to NUA-602 (Junction Box)

## Bravo FROST Sample Layout



	Catalog No.	Description
A	NUA-602	Junction Box
B	NUA-603	End-to-End Connector (included with luminaire)
C	NUA-604	2-Wire Hardwire Connector
D	NUA-605	72" Cord and Plug
E	NUA-606	6" Jumper Cable
F	NUD-68xx	Bravo FROST