

NUTP71 Series

24V Continuous Standard LED Tape Light

Source: 1.5W/ft. LED
80lm/ft.

PRODUCT DESCRIPTION

Standard Continuous LED Tape producing 80 lumens per ft., the Standard Continuous LED Tape is only 7/16" wide and 1/16" thick. Designed to cast no shadows, our flexible LED light boasts a desirable seamless glow. The low profile tape is the ideal for coves, architectural details, under and in cabinets, toe kicks, and back lighting.

FEATURES

- 20' or 100' Spool - Economical and Efficient
- 24V DC system
- 80 lumens per foot
- Single color illumination in three color temperatures (2700K, 3000K or 4200K)
- Field cuttable every 4" or 6 LEDs
- Easy to install; pre-applied 3M™ tape or acrylic mounting clips (included)

INCLUDED WITH EVERY 100' ROLL

(1) 100' Tape Light Roll, (50) Acrylic Mounting Clips with screws and (1) 12" Power Line Interconnector

INCLUDED WITH EVERY 20' ROLL

(1) 20' Tape Light Roll, (10) Acrylic Mounting Clips with screws and (1) 12" Power Line Interconnector

SPECIFICATION

Construction: The Continuous LED Tape can be cut every 6 LEDs at marked 4" intervals, cutting does not effect circuit. Easy flip style snap-on connectors connect to the cut ends.

Mounting: Tape light includes pre-installed 3M™ adhesive tape for simple installation. Optional channels or clips are available.

[NATHR-685](#): Clear Mounting Clips (pack of 15)

[NATL-C23](#): 4' Shallow Recessed Channel

[NATL2-C23](#): 4' Shallow Recessed Channel

[NATL-C24](#): 4' Shallow Channel

[NATL2-C24](#): 4' Shallow Channel

[NATL-C25](#): 4' Deep Recessed Channel

[NATL2-C25](#): 4' Deep Recesed Channel

[NATL-C26](#): 4' Deep Channel

[NATL2-C26](#): 4' Deep Channel

[NATL-C27](#): 4' J-Style Channel

[NATL-C28](#): 4' Corner Channel

[NATHR-680](#): 4' Aluminum Channel

ELECTRICAL

Input Voltage: 24V

Lumens / Wattage: 80lm / 1.5W per foot

Color Temperature: 2700K, 3000K or 4200K

Color Rendering Index: 90+ CRI

Operating Temperature: -25°C to 45°C

Dimming: Dimmable with Dimmable LED Driver

Maximum Run Length: 64'

ACCESSORIES

[NATLCFC-209/3A](#): 3" Power Cord with DC Connector

[NATLCFC-208/3A](#): 3" Hardwire Power Cord

[NATLCFC-209/12A](#): 12" Power Cord with DC Connector

[NATLCFC-208/12A](#): 12" Hardwire Power Cord

[NATLCFC-209/48A](#): 48" Power Cord with DC Connector

[NATLCFC-208/48A](#): 48" Hardwire Power Cord

[NATLCFC-209/96A](#): 96" Power Cord with DC Connector

[NATLCFC-208/96A](#): 96" Hardwire Power Cord

[NATLCFC-200A](#): End to End Connector

[NATLCFC-203A](#): 3" Linking Cable

[NATLCFC-206A](#): 6" Linking Cable

[NATLCFC-212A](#): 12" Linking Cable

[NATLCFC-224A](#): 24" Linking Cable

[NATLCFC-248A](#): 48" Linking Cable

[NATLCFC-272A](#): 72" Linking Cable

[NATLCFC-296A](#): 96" Linking Cable

LIMITATIONS

- Not rated or warranted for enclosed applications
- Tape light and most accessories are not rated for in-wall installation
- Do not install in where LED chips are exposed to direct sunlight, as damage to the phosphor will occur

LABELS AND LISTINGS

- cULus Listed for Damp Location
- 3-Year Limited Warranty



Type

Project

Catalog No.

Notes

PRODUCT IMAGES & DIMENSIONS



Optional Accessories

Description

[NATLCFC-609/3A](#) = 6" Power Cord with DC Connector

[NATLCFC-608/3A](#) = 6" Hardwire Power Cord

[NATLCFC-609/12A](#) = 12" Power Cord with DC Connector

[NATLCFC-608/12A](#) = 12" Hardwire Power Cord

[NATLCFC-609/48A](#) = 48" Power Cord with DC Connector

[NATLCFC-608/48A](#) = 48" Hardwire Power Cord

[NATLCFC-609/96A](#) = 96" Power Cord with DC Connector

[NATLCFC-608/96A](#) = 96" Hardwire Power Cord

[NATLCFC-600A](#) = End-to-End Connector

[NATLCFC-603A](#) = 3" Linking Cable

[NATLCFC-606A](#) = 6" Linking Cable

[NATLCFC-612A](#) = 12" Linking Cable

[NATLCFC-624A](#) = 24" Linking Cable

[NATLCFC-648A](#) = 48" Linking Cable

[NATLCFC-672A](#) = 72" Linking Cable

[NATLCFC-693A](#) = 96" Linking Cable

[NATL-C23](#) = 4' Shallow Recessed Channel

[NATL-C24](#) = 4' Shallow Channel

[NATL-C25](#) = 4' Deep Recessed Channel

[NATL-C26](#) = 4' Deep Channel

[NATL-C27](#) = 4' J-Style Channel

[NATL-C28](#) = 4' Corner Channel

[NATHR-680](#) = 4' Aluminum Channel

[NATHR-685](#) = Clear Mounting Clips (pack of 15)

24V Continuous Standard LED Tape Light

Length	CCT / CRI
NUTP71-W20LED = 20' Roll	927L = 2700K / 90 CRI
NUTP71-W100LED = 100' Roll	930L = 3000K / 90 CRI
NUTP71-WFTLED = Custom Cut (Qty. Ordered = Length in Feet)	942L = 4200K / 90 CRI

Example: [NUTP71-W100LED930L](#) = 100' 24V Continuous Standard LED Tape Light, 3000K / 90 CRI

NUTP71 Series

24V Continuous Standard LED Tape Light Accessories

Type

Project

Catalog No.

Notes



Power Cord with DC Connector

NATLCFC-209/3A 3"
NATLCFC-209/12A 12"
NATLCFC-209/48A 48"
NATLCFC-209/96A 96"
 Power cord connects NUTP71 tape light to a driver.



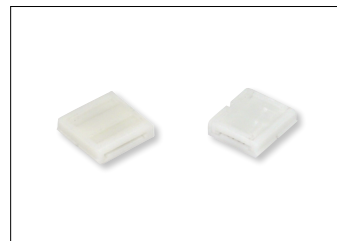
Hardwire Power Cord

NATLCFC-208/3A 3"
NATLCFC-208/12A 12"
NATLCFC-208/48A 48"
NATLCFC-208/96A 96"
 Power cord connects NUTP71 tape light to a 24VDC LED driver.



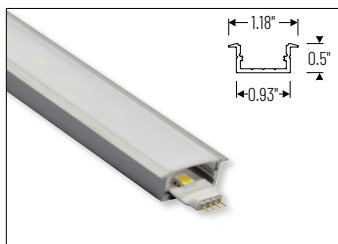
Linking Cables

NATLCFC-203A 3"
NATLCFC-206A 6"
NATLCFC-212A 12"
NATLCFC-224A 24"
NATLCFC-248A 48"
NATLCFC-272A 72"
NATLCFC-296A 96"
 Allows easy linking of two pieces of NUTP71 tape light. Cables are flexible and can be moved in any direction.



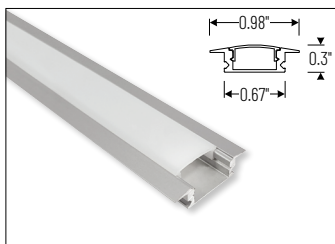
End-to-End Connector

NATLCFC-200A
 Allows connecting two pieces of NUTP71 tape light.



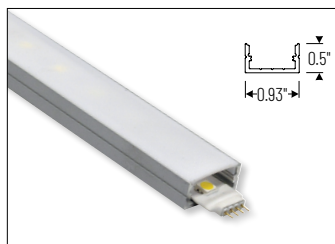
4' Shallow Recessed Channel

NATL-C23A Aluminum Finish
 Used to mount tape light recessed in a surface. 4' length and field cuttable. Diffused lens and end caps are included.



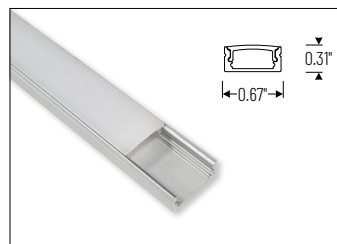
4' Shallow Recessed Channel

NATL2-C23A Aluminum Finish
 Used to mount tape light recessed in a surface. 4' length and field cuttable. Diffused lens, end caps and mounting hardware are included.



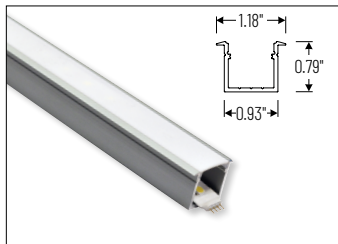
4' Shallow Channel

NATL-C24A Aluminum Finish
NATL-C24B Black Finish
NATL-C24W White Finish
 Used to mount tape light to flat surface. 4' length and field cuttable. Diffused lens and end caps are included.



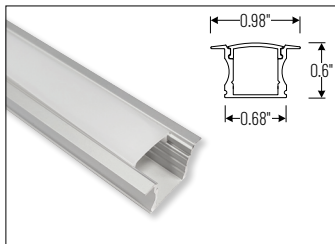
4' Shallow Channel

NATL2-C24A Aluminum Finish
 Used to mount tape light to flat surface. 4' length and field cuttable. Diffused lens, end caps and mounting hardware are included.



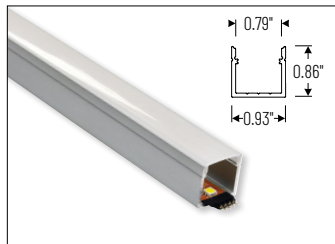
4' Deep Recessed Channel

NATL-C25A Aluminum Finish
 Used to mount tape light recessed in a surface. 4' length and field cuttable. Diffused lens and end caps are included.



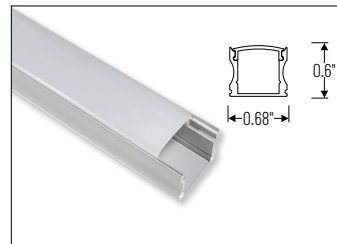
4' Deep Recessed Channel

NATL2-C25A Aluminum Finish
 Used to mount tape light recessed in a surface. 4' length and field cuttable. Diffused lens, end caps and mounting hardware are included.



4' Deep Channel

NATL-C26A Aluminum Finish
NATL-C26W White Finish
 Used to mount tape light to flat surface. 4' length and field cuttable. Diffused lens and end caps are included.



4' Deep Channel

NATL2-C26A Aluminum Finish
 Used to mount tape light to flat surface. 4' length and field cuttable. Diffused lens, end caps and mounting hardware are included.

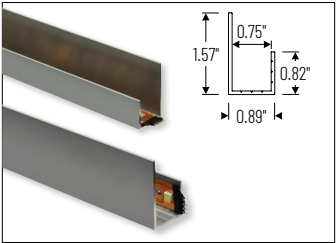
NUTP71 Series
24V Continuous Standard LED Tape Light Accessories

Type

Project

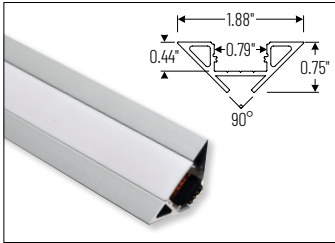
Catalog No.

Notes



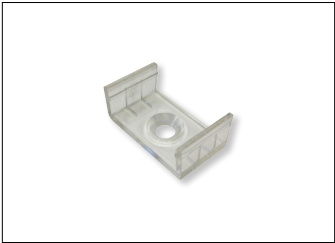
4' J-Style Channel

NATL-C27A Aluminum Finish
Used to mount tape light to flat surface.
4' length and field cuttable.



4' Corner Channel

NATL-C28A Aluminum Finish
NATL-C28B Black Finish
NATL-C28W White Finish
Used to mount tape light to a corner.
4' length and field cuttable. Diffused lens and end caps are included.



Mounting Clips for Channels

NATL-CMC Pack of 15
Used to mount compatible channel to surface.
Pack includes 15 mounting clips.
Compatible Channels:
NATL-C23, NATL-C24, NATL-24, NATL-C27



Clear Acrylic Mounting Clips

NATHR-685 Pack of 15
Used in conjunction with adhesive backing to attach tape light to a surface.
Pack includes 15 mounting clips.



4' Channel

NATHR-680 Aluminum Finish
Used to mount tape light to flat surface.
4' length and field cuttable.

NUTP71 Series
24V Continuous Standard LED Tape Light Drivers & Accessories

Type
Project
Catalog No.
Notes



Direct Plug-In LED Driver

NATL-524W	24V 24W
NATL-545W	24V 45W

Input Voltage: 120V
Cable Length: 6'



Direct Plug-In LED Driver

NATL-596W	24V 96W
------------------	---------

Input Voltage: 120V
Input Wire: 44" Cord and Plug
Output Wire: 58" Power line connector



Class 2 Universal Dimming Driver

NPSU-60W/24	60W
NPSU-96W/24	96W
NPSU-3X96W/24	3x 96W

Input Voltage: 110-277V
Dimming: Triac, ELV, MLV, 0-10V, PWM
Note: Power Line Connector(s) not included



Class 2 Hardwire LED Driver
ELV Dimming

NATLED-5040HW	24V 40W
----------------------	---------

Input Voltage: 120V
Dimming: ELV
Includes: 10' Power Line Connector



Class 2 Hardwire LED Driver
MLV Dimming

NMT-48/24C2D1	48W
----------------------	-----

Input Voltage: 120V
Dimming: Magnetic Low Voltage
Includes: 10' Power Line Connector



Class 2 Hardwire LED Driver
with Breakers, MLV Dimming

NMT-303/24C2D1	120V input
NMT-303/24C2D2	277V input

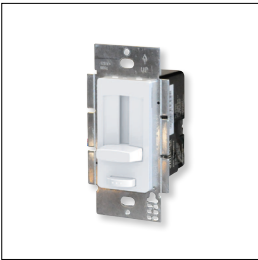
Input Voltage: 120V or 277V
Dimming: Magnetic Low Voltage
Breakers: (3) 100W
Note: Power Line Connector(s) not included



Class 2 Hardwire LED Driver
with Regulator, MLV Dimming

NMTD-60/24D	24V 60W
NMTD-96/24D	24V 96W

Input Voltage: 120-277V
Dimming: Magnetic Low Voltage
Regulator: Integral regulator for constant current and voltage
Includes: 10' Power Line Connector



NEXUS® All-in-One LED Driver and Dimmer

NATL-SWEX60/24A	24V 60W
NATL-SWEX100/24A	24V 100W

Input Voltage: 120V
Dimming: Integral Dimmer
Description: Eliminates the driver and allows 120V input and 24V output from a single gang box. 100-5% dimming and on/off switch.



Power Line Connector

NALTL-10	10' Power Line
NALTL-30	30' Power Line

For use with Class 2 drivers. Carries output from driver, requires power line interconnectors.



Splitter

NATL-302W	5" Splitter
------------------	-------------

Splits power line connector into two separate leads, requires power line cable.



Low Voltage Splice Box

NATL-415W

Use to join low voltage lead to power line connector.



Terminal Block

NATL-407	4-Way
	2-3/8"L x 1-1/8"W x 7/8"D
NATL-408	8-Way
	4"L x 1-1/8"W x 7/8"D



Wire Clip, Plastic - 10pk

NATL-404W	J-Clip
NATL-405W	Over the Wire
NATL-406W	Square Clip



2' Wire Raceway

NATL-422B	Black
NATL-422W	White

Field-cuttable plastic. Includes wire channel with double faced tape and cover.