

Silk SBC LED Lightbar

Uniform Reflectance with NO Diode Image

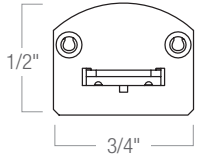
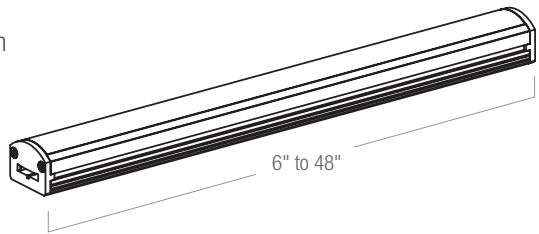
5W 350+ Lumen/ft. · 90+ CRI · Solid Bus Connectors

The 24V Silk SBC LED Lightbar produces an incredible 350+ lumens per foot while consuming only 5W at 90+ CRI. The Silk SBC LED Lightbar eliminates the diode image to provide uniform reflectance of light without the hot spots generated by direct view mounted LEDs. The Solid Bus Connectors (SBC) provide a rigid connection between bars, while the flush mount adjustable mounting brackets allow complete zero to 90 degree adjustment. Silk features an ultra low-profile and is available in five lengths with a variety of contractor-friendly installation accessories. Silk SBC can be used in under cabinet, in cabinet, cove, display, and general commercial, retail and residential lighting applications.



FEATURES

- Uniform reflectance with NO diode image
- Silky smooth lens for easy maintenance
- 350+ Lumens/foot using an average of 5W/foot, 90+ CRI
- 24V System requires Nora driver
- Solid Bus Connectors (SBC) provide rigid connection between bars
- Available in Cool White (4000K) and Warm White (3000K or 2700K)
- Available in five lengths from 6" to 48"
- Runs up to 20' with 100W driver and 12' with 60W driver
- Aluminum and black finishes
- Easy installation with flush mount 0° - 90°adjustable aiming mounting brackets (included)
- Flush SBC end connectors (included)
- Complete line of installation accessories
- Dimmable with dimmable power supply
- Compatible with NEXUS[®] Dimmer/Driver All-in One
- Lightbars and Class II Drivers rated for -25°C operation
- cULus Dry Label listed
- ENERGY STAR Certified
- 30,000 hours of rated lamp life
- Can be used to comply with 2016 Title 24 – part 6 High Efficacy LED light source requirements

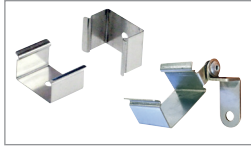


SILK SBC LED LIGHTBAR

CATALOG NO.	LENGTH	SOURCE	COLOR TEMP	FINISH
NULB-8	06 6"	LED9	27 2700K	A Natural Aluminum
	12 12"		30 3000K	B Black <i>(special order only)</i>
	24 24"		40 4000K	
	36 36"			
	48 48"			



SILK SBC LED LIGHTBAR ACCESSORIES



NAL-801 Flat Mount
NAL-801 0-90°+ Adj. Mount
Mounting Clip
Flat and 0-90° Adjustable included with each lightbar.



NAL-845 45° Angle Mount
NAL-880 0-180° Adj. Mount
Mounting Clip



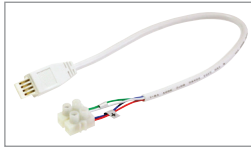
NAL-800
Interlink SBC Solid Bus Connector
Included with each lightbar



NAL-802W 2" **NAL-806W 6"**
NAL-812W 12" **NAL-824W 24"**
NAL-872W 72"
Flex SBC Interconnection Cable



NAL-807W 12"
NAL-807/72W 72"
SBC Side Power Line Cable
White finish



NAL-812TBW 12"
NAL-872TBW 72"
SBC Power Line Cable with
Terminal Block 14AWG-22AWG



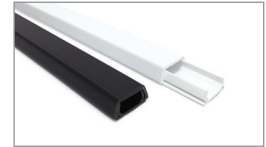
NAL-810/12W 12"
NAL-810/72W 72"
SBC Power Line Cable
Open Wire, White finish



NAL-811/12W 12"
NAL-811/72W 72"
SBC Side Power Line Cable
Open Wire, White finish



NAL-808/24W 12"
NAL-808/72W 72"
SBC Power Line Cable
White finish



NATL-422
2" Wire Raceway
Field-cuttable plastic. Includes wire channel with double faced tape and cover. Black or White.



NAL-830
In-Line Motion Sensor
L: 2.5", W: 0.75", H: 0.75"
12" Max activation distance; 20 second auto off; 120° detection zone; Max Load 4A



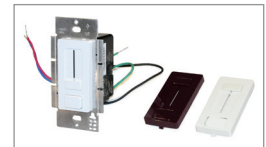
NAL-855
SILK Light Bar Touch Dimmer
Tap once for 100%, twice for 75%, third time for 50%, fourth for 25% and fifth for off. No power failure memory.



NATL-518
Touch Dimmer
72W max., no power fail memory, touch on/off and hold to dim.



NAL-856W
DC Plug and Play Motion Sensor
12" Max activation distance; 20 second auto off; 120° detection zone; Max Load 4A. Compatible with Nora LED Tape Light, LED Lightbar and LED Puck.



NATL-SWEX100/24 24V 100W
SWITCHEX® All-in-One LED
Driver and Dimmer
Converts 120 VAC to low voltage DC in a standard electrical box. Includes face plate.



NATL-524 24V 24W
NATL-545 24V 45W
NATL-596 24V 96W
24V Direct Plug-In LED Drivers
Allows direct connection to a wall outlet with 6' cord and plug (NATL-524 and 545) or 5' cord and plug and 44" power line connector (NATL-596). Requires power line interconnection cable. Non-dimmable.



NATL-530HW 24V 30W
NATL-560HW 24V 60W
24V Class II Hardwire Electronic
LED Driver
Allows hardwiring using NUSP-JBox. Can be converted into direct plug-in driver using NRA-6035. Requires power line interconnection cable unless used with NAL-250. Non-dimmable.



NATL-5060HW 24V 60W
NATL-5100HW 24V 100W
24V Class II Hardwire Electronic
LED Driver
Can be used with Nora LED Tape, Light Bar and Puck. Allows hardwiring. Includes 10' power line connector (NALTL-10). Non-dimmable.



NMTD-60/24D 24V 60W
NMT-96/24D 24V 96W
Dimmable 24V Class II Remote
Hardwire Magnetic Drivers
With integral regulator for constant current and voltage. Includes 10' Power Line Connector (30' ordered separately).



NRA-125/6 6"
NRA-125/12 12"
NRA-125/18 18"
NRA-125/72 72"
Flexible Extension Cord for
NATL-530HW or NATL-560HW
Used to extend length between NUSP-JBox and NATL-530HW or NATL-560HW. Can be joined together to create custom lengths.



NRA-6035W/6 6"
NRA-6035W/10 10"
Cord and Plug for NATL-530HW or NATL-560HW
Used to convert NATL-530HW or NATL-560HW into a direct plug-in driver.



NALTL-10 10' 24V
NALTL-30 30' 24V
Replacement Power Line
Connector
For use with NMT Series and NATL-5100HW. Replaces included 10' lead wire, to allow for 30' or less length between Lightbar PLUS run and LED Driver.



NUSP-JBox
Junction Box for Hardwiring
Required for hardwiring NATL-530HW or NATL-560HW. Can be used to feed to separate runs. Accepts Romex®.



NATL-415
Low Voltage Splice Box
Use to join Romex® low voltage lead to power line connector.



NATL-W16-2-250 16AWG 250'
NATL-W16-2-20 16AWG 20'
In-Wall Rated Wire
16 AWG low voltage Class II two-conductor, in-wall rated wire.