

Installation Instructions

NFLIN

FLIN Thin Regressed LED Downlight Series

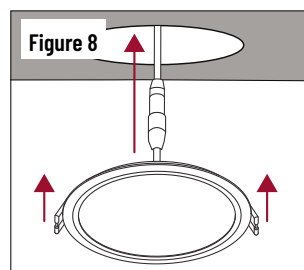
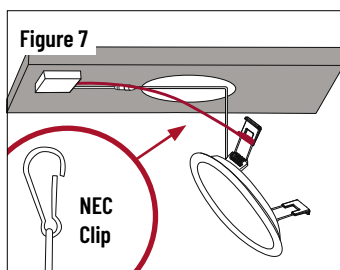
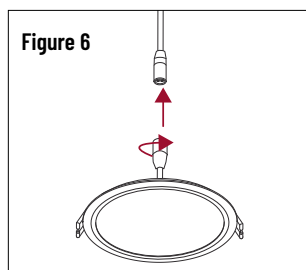
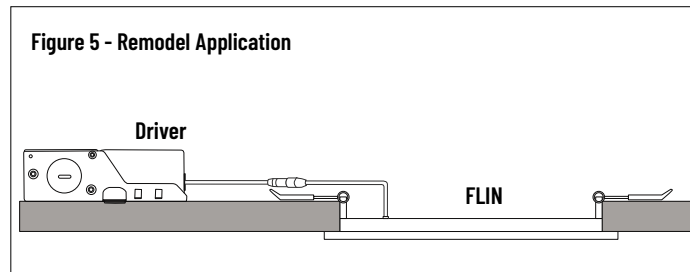
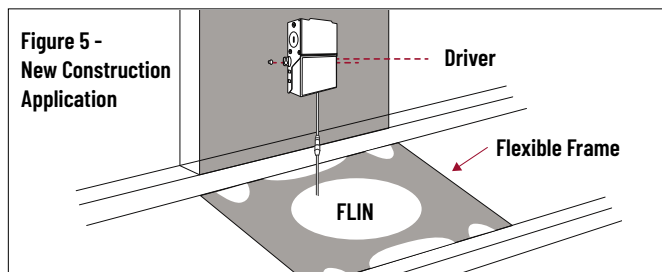
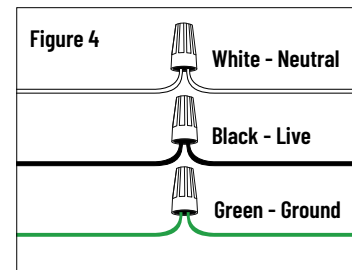
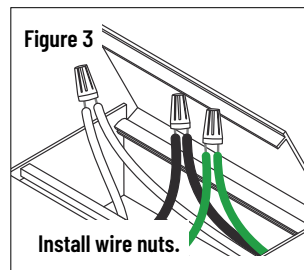
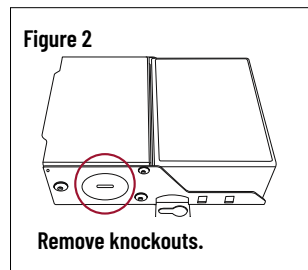
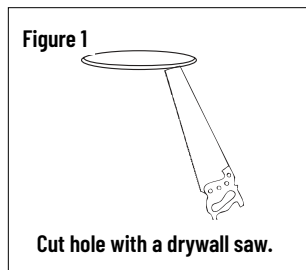
READ PRIOR TO ATTEMPTING INSTALLATION
ALWAYS TURN OFF MAIN POWER BEFORE INSTALLATION
INSTALLATION SHOULD BE CARRIED OUT BY YOUR LOCAL ELECTRICIAN

- ⚠ WARNING** - Risk of fire or electric shock. LED Kit installation requires knowledge of luminaire electrical systems. If not qualified, do not attempt installation. Contact a qualified electrician.
- ⚠ WARNING** - Risk of fire or electric shock. Install this kit only in luminaires that have the construction features and dimensions shown in the photographs and / or drawings and where the input rating of the retrofit kit does not exceed the input rating of the luminaire.
- ⚠ WARNING** - To prevent wiring damage or abrasion, do not expose wiring to edges of sheet metal or other sharp objects.
- ⚠ WARNING** - This equipment is intended to be installed only by qualified personnel. The installation must be made in accordance with the current edition to the National Electric Code and all applicable state and local building codes. The final installation must be approved by the appropriate qualified electrical/building inspector(s). Improper installation may result in a fire or electrical hazard. Be sure the electrical power to the circuit has been disconnected before installing this electrical system.

- ⚠ AVERTISSEMENT** - Risque d'incendie ou d'électrocution. L'installation du kit LED requiert la connaissance des systèmes électriques des luminaires. Si vous n'êtes pas qualifié, ne tentez pas l'installation. Contactez un électricien qualifié.
- ⚠ AVERTISSEMENT** - Risque d'incendie ou de choc électrique. N'installez ce kit que dans des luminaires ayant les caractéristiques de construction et les dimensions indiquées sur les photographies et / ou les dessins et dont la valeur d'entrée du kit de conversion ne dépasse pas la puissance nominale du luminaire.
- ⚠ AVERTISSEMENT** - Pour éviter d'endommager le câblage ou l'abrasion, n'exposez pas le câblage aux bords de la tôle ou d'autres objets pointus.
- ⚠ AVERTISSEMENT** - Cet équipement est destiné à être installé uniquement par du personnel qualifié. L'installation doit être faite en conformité avec l'édition actuelle du Code national de l'électricité et toutes étatiques et locales codes du bâtiment applicables. L'installation finale doit être approuvée par l'inspecteur en électricité / bâtiment qualifié approprié(s). Une mauvaise installation peut entraîner un incendie ou un risque électrique. Soyez sûr de la puissance électrique vers le circuit a été coupée avant l'installation de ce système électrique.

INSTRUCTIONS:

1. Cut hole (refer to Cut-Out Dimensions Table for appropriate size) with a drywall saw. (Figure 1)
2. Open the cover of the remote driver box and remove appropriate knockouts. (Figure 2)
3. Locate power supply leads from remote driver box. Connect the same colored power supply lead wires to the fixture wires. (Figure 3 & Figure 4)
4. Close the cover of the remote driver box.
5. Place remote driver box through the cut-out hole and secure driver box with screws (included). (Figure 5)
6. Connect the remote driver box to the fixture by inserting and twisting the male / female connectors. (Figure 6)
7. Secure the NEC clip on the remote driver to the springs clips on the fixture. (Figure 7)
8. Push the spring clips on the fixture up and insert light fixture through the ceiling cut out. Ensure the spring clips are holding the fixture securely. (Figure 8)
9. Once assembly is complete, turn on power. If the module doesn't turn on within 5 seconds, turn power off, carefully remove assembly and double check all wiring.



| CUT-OUT DIMENSIONS | |
|----------------------|-----------------|
| 4" Round Diameter | 4.125" |
| 4" Square Dimensions | 4.25" x 4.25" |
| 6" Round Diameter | 6.125" |
| 6" Square Dimensions | 6.25" x 6.25" |
| 8" Round Diameter | 8.125" |
| 8" Square Dimensions | 8.125" x 8.125" |