

NHICCP-4LMRAT

4" Chicago Plenum LED Dedicated New Construction Housing
(Compatible with Cobalt, Onyx, Iolite Retrofit and Pearl)

Type

Project

Catalog No.

Notes

PRODUCT DESCRIPTION

Dedicated new construction housing approved for City of Chicago Environmental Air (CCEA). Airtight construction provides energy savings by reducing the flow of air through the ceiling. The housing is dedicated and labeled for use with LED retrofit luminaires.

FEATURES

- IC rated for direct contact with insulation
- Romex strain relief slots for easy installation
- Quick connect provided for electrical connection to the LED downlights
- CCEA approved
- 24-1/2" bar hangers with captive nails and alignment foot

CONSTRUCTION

Plaster Frame: High quality 0.04" steel die cut one piece frame.

Housing: 0.040 aluminum outer housing with white powder coated steel inner housing. Inner housing adjusts for ceiling thickness from 1/2" to 1-1/4".

Air Flow Restriction: Housing has factory installed gaskets to restrict airflow from room into ceiling plenum to <2CFM (cubic feet per minute) in accordance to ASTM 283.

Clearance: "IC" Insulated ceiling housings are direct contact rated. **Not to be used in direct contact with spray foam insulation.**

Bar Hangers: Two 13-3/4" to 24-1/2" adjustable bar hangers with captive nails are included on frame. Bar hangers are parallel to junction box, but can be repositioned 90° perpendicular to junction box if desired. "L" Shaped bar hanger foot to align to bottom of construction joist. A T-Bar notch allow for easy installation in a suspended ceiling.

Junction Box: Prewired 25 cubic inch 0.064" thick galvanized steel, with seven 1/2" trade size knockouts and snap on covers. All leads are #18AWG wire, the ground wire is connected to the bottom, and quick connectors are supplied on all leads. Maximum of 8 no. 12 AWG through branch circuit conductors suitable for at least 90°C permitted in junction box.

Romex Strain Relief: Junction box includes two Romex tabs with two slots at each tab for NM-cables of 12/2 to 14/2. The strain relief allows for easy installation and less materials.

ELECTRICAL

Input Voltage: 120/277V

Socket: Quick connect for LED luminaires

Dimming: Specified by downlight

COMPATIBILITY

[NIR-4:](#) 4" Iolite Retrofit Downlights

[NLCBC-469:](#) 4" Cobalt Adjustable Downlight

[NLCBC2-4:](#) 4" Cobalt Click Downlights

[NOX-4 / NOXAC-4 / NOXTW-4:](#) 4" Onyx Downlights

[NPR-4:](#) 4" Pearl Series

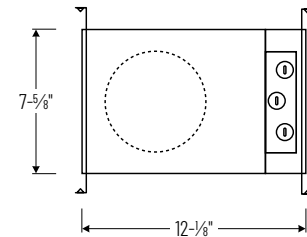
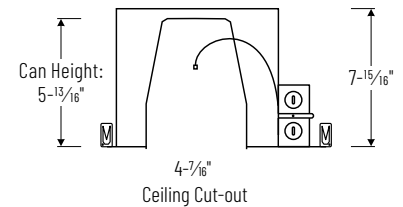
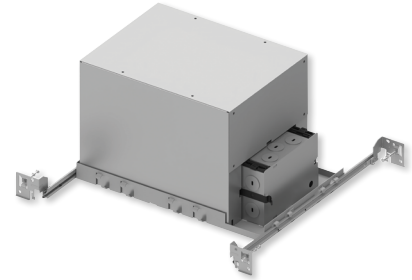
[NRM3-4:](#) 4" Marquise III Downlights

LABELS AND LISTINGS

- cULus Listed for damp location & feed through (wet location when used with compatible luminaire)
- Airtight in accordance to ASTM 283
- Certified to the high efficacy requirements of California Title 24 JA8-2022 (when used with compatible luminaire)
- CCEA approved
- RoHS compliant



PRODUCT IMAGES & DIMENSIONS



4" Chicago Plenum LED Dedicated New Construction Housing

Catalog No.

NHICCP-4LMRAT = 4" Chicago Plenum Housing, 120/277V input (120V Triac/ELV dimming)

NHICCP-4LMRAT/4W = 4" Chicago Plenum Housing, 120/277V input (120V Triac/ELV/0-10V & 277V 0-10V dimming, Cobalt only - LE4 required)

Example: **NHICCP-4LMRAT** = 4" Chicago Plenum LED Dedicated New Construction Housing, 120/277V input