

# NL-3420

## 3" Square Trim with 1-1/2" Pinhole

Type

Project

Catalog No.

Notes

### FEATURES

**Trim:** 3" die-cast aluminum flange provides sharp clean corners. Gimbal ring allows lamp to be mounted on top of the trim and adjustable up to 35°.

**Mounting:** Trim includes three trim clips that securely mount trim in housing.

### COMPATIBLE HOUSINGS

Compatible with Line Voltage and Low Voltage housings. See individual specification sheets for more information.

### COMPATIBLE LAMP / HOUSINGS

#### Low Voltage:

**Important:** Do not use glass lens (provided) when already using lamp with glass cover  
50W 12V MR16 (NL-301 Series; NLIC-301 Series; NLR-304 Series; NLR-305 Series)

#### Line Voltage:

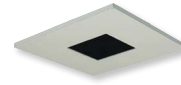
50W 120V MR16 GU10 Max. (NH-350AT; NHIC-350AT; NHR-354AT)

### LABELS AND LISTINGS

cULus Listed for Damp Location when used with compatible housing.



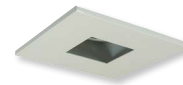
### Product Images and Dimensions



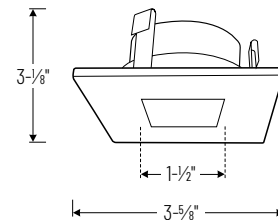
**NL-3420BW**  
Black Pinhole  
White Trim



**NL-3420NN**  
Natural Metal Pinhole  
Natural Metal Trim



**NL-3420WW**  
White Pinhole  
White Trim



## 3" Square Trim with 1-1/2" Pinhole

Catalog No.

**NL-3420BW** = Black Pinhole / White Trim

**NL-3420NN** = Natural Metal Pinhole / Natural Metal Trim

**NL-3420WW** = White Pinhole / White Trim

## Compatible Housings

### Line Voltage

Catalog No.

**NH-350AT** = 3" Non-IC Air-Tight New Construction Housing / 50W max.

**NHIC-350AT** = 3" IC Air-Tight New Construction Housing / 50W max.

**NHR-354AT** = 3" Non-IC Air-Tight Remodel Housing / 50W max.

### Low Voltage

Catalog No.

**NLIC-301AT/1EL** = 3" IC Air-Tight New Construction Housing / 50W max.

**NLIC-301QAT/20** = 3" IC Air-Tight New Construction Housing / 20W max.

**NLIC-301QAT/37** = 3" IC Air-Tight New Construction Housing / 37W max.

**NLIC-301QAT** = 3" IC Air-Tight New Construction Housing / 50W max.

**NL-301AT/1EL** = 3" Non-IC Air-Tight New Const. Housing / 50W max.

**NL-301QAT/20** = 3" Non-IC Air-Tight New Const. Housing / 20W max.

**NL-301QAT/37** = 3" Non-IC Air-Tight New Const. Housing / 37W max.

**NL-301QAT** = 3" Non-IC Air-Tight New Const. Housing / 50W max.

**NLR-304AT/1EL** = 3" Non-IC Air-Tight Remodel Housing / 50W max.

**NLR-304QAT/20** = 3" Non-IC Air-Tight Remodel Housing / 20W max.

**NLR-304QAT/37** = 3" Non-IC Air-Tight Remodel Housing / 37W max.

**NLR-304QAT** = 3" Non-IC Air-Tight Remodel Housing / 50W max.

**NLR-305AT/20** = 3" Non-IC Air-Tight Remodel Housing / 20W max.

**NLR-305AT/37** = 3" Non-IC Air-Tight Remodel Housing / 37W max.

**NLR-305AT** = 3" Non-IC Air-Tight Remodel Housing / 50W max.

Example: **NL-3420WW** = 3" Square Trim with 1-1/2" Pinhole, White Pinhole / White Trim