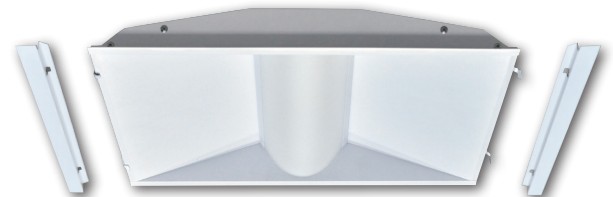


LED Retrofit Center Basket Troffer

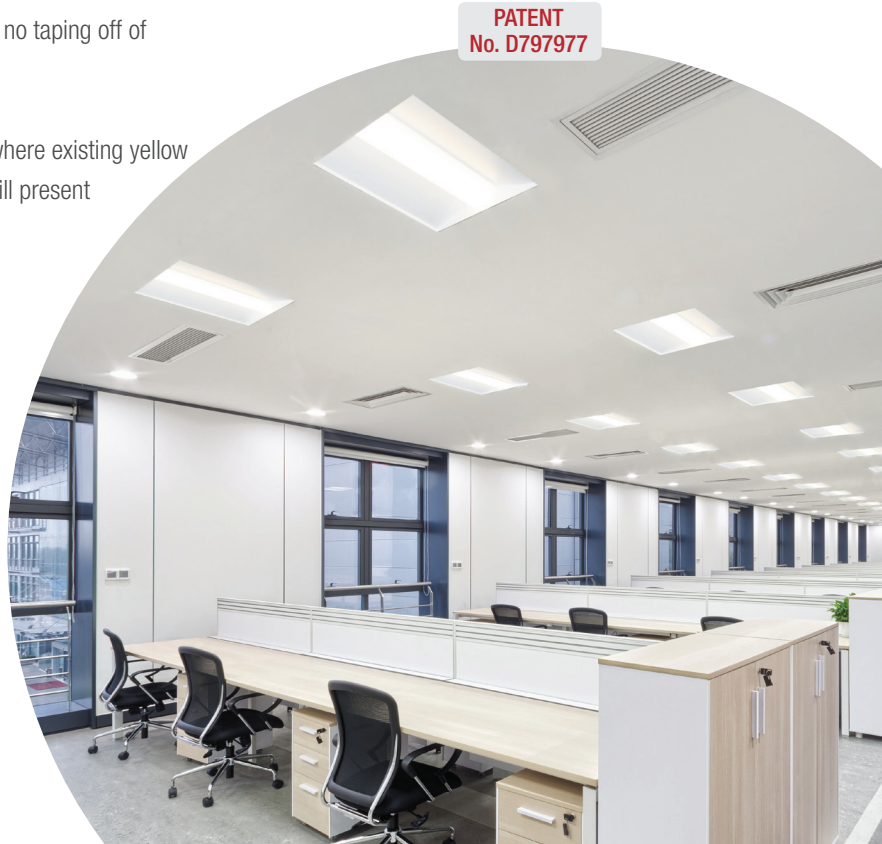
Specification grade LED center basket troffers provide smooth and uniform general lighting for commercial and industrial applications. Upgrade old fluorescents quickly and without a mess. Luminaires are 120V/277V input with 0–10V dimming, multiple sizes, and a range of kelvin temperatures. The fixtures include a diffused, removeable lens, a hinged access plate with LED board. The patented retrofit design allows for installation in existing troffers, sometimes in less than 3 minutes. The shallow housing will retrofit parabolic and lensed door fixtures and requires no access to above. Ideal for use in task areas where general illumination is desired such as offices, schools, conference rooms, libraries, retail, hospitals and others.

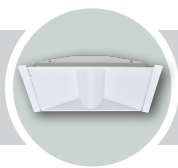


FEATURES

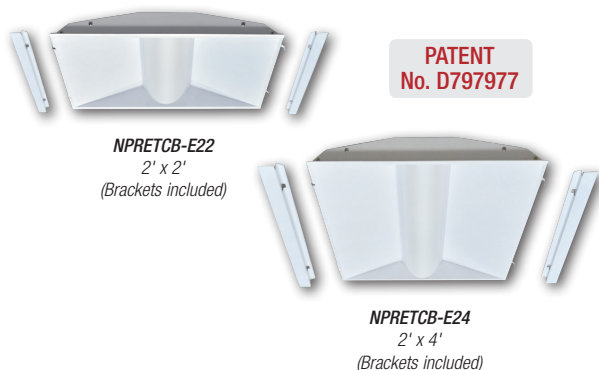
- Very quick installation
- Does not require access from above
- Converts parabolic and lensed fixtures
- 3000 lumens (2' x 2') or 4000 lumens (2' x 4')
- 3500K to 4000K at 85 CRI
- Easily replace existing fluorescent troffers without any mess - no taping off of work area
- No disposal fee for old housings
- Complete new appearance from below vs LED lamp retrofit, where existing yellow and dirty lens or dusty and discolored parabolic louvers are still present
- High efficiency - complete unitized body, reflector and lens
- Removeable diffused lens evenly distributes light and maximizes performance
- Two replaceable LED Strips with tightly spaced diodes eliminate diode image
- Driver compartment easily accessible from below
- 100-277V input and 0-10V dimming
- cULus listed for damp location
- DLC listed
- 5-Year limited warranty

PATENT
No. D797977





LED RETROFIT CENTER BASKET TROFFER



LED CENTER BASKET TROFFER RETROFIT

SERIES / LUMEN / WATTAGE	COLOR TEMP	FINISH
NPRETCB-E22L30 2'x2' / 3000lm / 30W	35 3500K	W White
NPRETCB-E24L40 2'x4' / 4000lm / 40W	40 4000K	

Example: *NPRETCB-E24L4035W* - 2'x4' / 4000lm / 40W LED Troffer Retrofit, 3500K, White Finish

RETROFIT INSTALLATION

1. Disconnect power to existing fixture.
2. Remove existing lens or louver. Remove lamps and disconnect ballast. (See Fig. 1)
3. If clearance permits, leave ballast, or otherwise remove as needed.
Please dispose of lamps, door frame, and ballast properly. (See Fig. 2)
4. Slightly lift luminaire housing and slide in brackets (supplied) between the housing and the grid ceiling. (See Fig. 3) Lower housing onto mounting brackets.
5. Hang the retrofit assembly by its hinges on one of the mounting brackets. (See Fig. 4)
6. Hardwire or install quick connect (supplied) to the line (black) and neutral (white) from 120V input. (See Fig. 5)
7. Wire the existing fixture ground wire to the supplied ground wire/s. If no ground wire exists from the power supply, add ground wire to the existing luminaire housing. The retrofit assembly must be properly grounded.
8. Close the retrofit assembly and secure the latches. (See Fig. 6)
9. Reconnect main power.

