

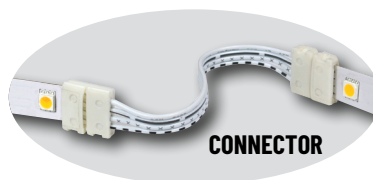
24V CONTINUOUS TAPE LIGHT

20' or 100' rolls • Up to 450 lm/ft.

24V Continuous tape light is available in three different lumen outputs (80 to 450lm/ft.). LED tape light is available in 20' or 100' spools and can be cut every 4". The spools allow designers, contractors, and distributors more flexibility in design. Optional mounting, power and interconnects make Nora's Continuous Tape excellent for small or large jobs. The continuous tape can be used in cove, undercabinet, toe-kick, cabinet, back-light, and accent applications.

FEATURES

- 20' or 100' Spools - Economical and Efficient
- 24V system - requires class 2 LED driver
- Dimmable with dimmable power supply
- Three Output Levels
 NUTP71 (80lm and 1.5W per foot) - 64' maximum run length
 NUTP51 (375lm and 4.25W per foot) - 25' maximum run length
 NUTP81 (450lm and 6.5W per foot) - 16' maximum run length
- Dedicated color temperatures (2700K, 3000K or 4200K)
- No soldering required
- Cuttable every 4" and connectable with accessories
- Easy installation with 3M™ adhesive pre-installed
- Custom cuts available
- cULus Listed for damp locations
- Range of mounting accessories, drivers and connectors
- 3-year limited warranty



CONNECTOR



NUTP81-W20LED
20' High Output
LED Tape Light



NUTP71-W100LED
100' Standard
LED Tape Light



24V CONTINUOUS LED TAPE ROLLS

SERIES / LUMENS PER FOOT	ROLL LENGTH	CCT
NUTP71-W Standard (80lm/ft.)	20LED 20' Roll	927 2700K
NUTP51-W Hy-Brite (375lm/ft.)	100LED 100' Roll	930 3000K
NUTP81-W High Output (450lm/ft.)	FTCUT Custom Cut (specify ft.)	942 4200K

Example: **NUTP51-W100LED927** - 100' Continuous Hy-Brite LED Tape Roll, 2700K
 Custom Cut Example: (33) **NUTP51-WFTLED927** - 33' 24V Hy-Brite LED Tape Roll, 2700K



Continuous LED Tape Roll Drivers & Accessories



Flip Type DC Plug Connector

NATLCFC-(S)09/3A 3"
NATLCFC-(S)09/12A 12"
NATLCFC-(S)09/48A 48"
NATLCFC-(S)09/96A 96"
(S) = (2) NUTP71 or (6) NUTP51 & NUTP81
 Flip connector connects tape to a driver.



Flip Type Splice Connector

NATLCFC-(S)08/3A 3"
NATLCFC-(S)08/12A 12"
NATLCFC-(S)08/48A 48"
NATLCFC-(S)08/96A 96"
(S) = (2) NUTP71 or (6) NUTP51 & NUTP81
 Flip connector connects tape to 24V input.



Flip Type Interconnector Cable

NATLCFC-(S)03A 3"
NATLCFC-(S)06A 6"
NATLCFC-(S)12A 12"
NATLCFC-(S)24A 24"
NATLCFC-(S)48A 48"
NATLCFC-(S)72A 72"
NATLCFC-(S)96A 96"
(S) = (2) NUTP71 or (6) NUTP51 & NUTP81
 Allows easy linking of two pieces of tape.



Flip Type Link Connector

NATLCFC-(S)00A 12mm
(S) = (2) NUTP71 or (6) NUTP51 & NUTP81
 Allows connecting two pieces of tape.



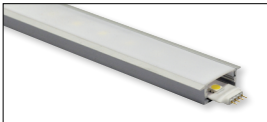
Clear Acrylic Mounting Clips

NATHR-685 Pack of 15
 Use in conjunction with adhesive backing to attach Tape Light to a surface. Clear acrylic mounting clips are included with every Tape Light roll.



4 Channel

NATHR-680 Aluminum
 Mounts Tape Light to various surfaces. Field cuttable.



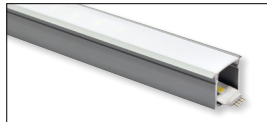
4 Shallow Recessed Channel

NATL-C23A Aluminum
 Used to mount tape light recessed in a surface. Plastic diffuser and end caps included. Field cuttable.



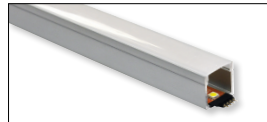
4 Deep Recessed Channel

NATL-C25A Aluminum
 Used to mount tape light recessed in a surface. Plastic diffuser and end caps included. Field cuttable.



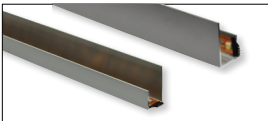
4 Shallow Channels

NATL-C24A Aluminum
NATL-C24B Black
NATL-C24W White
 Used to mount tape light to various surfaces. Plastic diffuser and end caps included. Field cuttable.



4 Deep Channels

NATL-C26A Aluminum
NATL-C26B Black
NATL-C26W White
 Used to mount tape light to various surfaces. Plastic diffuser and end caps included. Field cuttable.



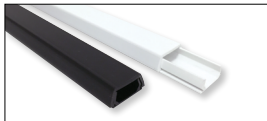
4 J-Style Channel

NATL-C27A Aluminum
 Used to mount tape light to various surfaces. Field cuttable.



4 Corner Channels

NATL-C28A Aluminum
NATL-C28B Black
NATL-C28W White
 Plastic diffuser included. Field cuttable



2 Wire Raceway

NATL-422B Black
NATL-422W White
 Field-cuttable plastic. Includes wire channel with double faced tape and cover.



Wire Clip, Plastic - 10pk

NATL-404W J-Clip
NATL-405W Over the Wire
NATL-406W Square Clip



Low Voltage Splice Box

NATL-415W
 Use to join low voltage lead to power line connector.



Direct Plug-In LED Driver

NATL-524W 24V 24W
NATL-545W 24V 45W
Input Voltage: 120V
Cable Length: 6'



Direct Plug-In LED Driver

NATL-596W 24V 96W
Input Voltage: 120V
Input Wire: 5' Cord and Plug
Output Wire: 44' Power line connector



Class II Hardwire LED Driver

NATL-5100HW 24V 81.6W
Input Voltage: 120-240V
Dimming: Non-Dimmable
Includes: 10' Power Line Connector



Class II Hardwire LED Driver
 0-10V Dimming

NATL-5096-24-HWD10 24V 81.6W
Input Voltage: 120-277V
Dimming: 0-10V
Includes: 10' Power Line Connector



Class II Hardwire LED Driver
 ELV Dimming

NATLED-5040HW 24V 40W
NATLED-5075HW 24V 75W
Input Voltage: 120V
Dimming: ELV
Includes: 10' Power Line Connector



Class II Hardwire LED Driver
 with Breakers, MLV Dimming

NMT-303/24C2D1 120V/24V
NMT-303/24C2D2 277V/24V
Input Voltage: 120V or 277V
Dimming: Magnetic Low Voltage
Breakers: (3) 100W
NOTE: Power Line Connector(s) not included



Class II Hardwire LED Driver
 with Regulator, MLV Dimming

NMTD-60/24D 24V 60W
NMTD-96/24D 24V 96W
Input Voltage: 120-277V
Dimming: Magnetic Low Voltage
Regulator: Integral regulator for constant current and voltage
Includes: 10' Power Line Connector



NEXUS® All-in-One LED Driver and Dimmer

NATL-SWEX60/24A 24V 60W
NATL-SWEX100/24A 24V 100W
Input Voltage: 120V
Dimming: Integral Dimmer
Description: Eliminates the driver and allows 120V input and 24V output from a single gang box. 100-5% dimming and on/off switch.



Power Line Connector

NATL-10 10' Power Line
NATL-30 30' Power Line
 For use with Class II drivers. Carries output from driver, requires power line interconnectors.

NATL-302W 5" Splitter
 Splits power line connector into two separate leads, requires power line cable.



Touch Dimmer with Memory

NATL-518W
 72W max., no power fail memory, touch on/off and hold to dim.