

NORA[®]

LIGHTING



LINEAR / ACCENT

LIGHTBAR, TAPE, PUCK, UNDERCABINET



TABLE OF CONTENTS

Nora's family of products for linear, accent, or discrete general lighting is limited in application only by the lighting designer's imagination. These fixtures are compact in design and meet various energy requirements while achieving desired lighting effects. Lighting can be specified in a variety of applications including, under cabinet, niche, display, cabinet, shelf, closet, furniture, cove, under bar top, toe-kick or other applications where drama and accent lighting are used to define a space. Linear applications are solved with Lightbar, LEDUR Under Cabinet, Bravo FROST Linear, NULS, Tape Light, M1 miniature downlights and Puck Lights. Nora's linear and accent lighting is an excellent choice for today's green energy-efficient environment.

120V LED LIGHTBAR	PG. 3
120V LED Linear luminaires deliver 200 lumens per foot in dedicated 3000K.	
LEDUR LED UNDER CABINET	PG. 4
120V LED edge-lit under cabinet available with Selectable CCT or dedicated 3000K.	
BRAVO FROST TW LED LINEAR	PG. 5
120V LED Linear luminaire available with Selectable CCT. Adjustable brackets included.	
NULS LED LINEAR	PG. 6
120V Economical linear luminaire delivers 525 lumens per foot in 2700K, 3000K or 4000K.	
IP65 LED TAPE LIGHT	PG. 10
120VAC Flexible IP65 rated tape light produces 330 lumens per foot in 27K, 30K or 40K.	
COB LED TAPE LIGHT	PG. 12
24V Flexible COB tape lights available in 200 or 450 lumens per foot in 27K, 30K, 35K or 40K.	
RGBW COB LED TAPE LIGHT	PG. 14
24V Flexible COB tape light delivering up to 300 lumens per foot in RGBW.	
CCT COLOR TUNING LED TAPE LIGHT	PG. 16
24V Flexible color tuning tape that allows the CCT to be changed from 2500K to 4500K.	
COMFORT DIM LED TAPE LIGHT	PG. 18
24V Flexible warm dimming tape light that changes from 30K to 18K as tape is dimmed.	
SIDE-LIT LED TAPE LIGHT	PG. 20
24V Side illuminating flexible tape light produces 70 lumens per foot.	
CONTINUOUS STANDARD LED TAPE LIGHT	PG. 22
24V Flexible Standard Output tape light delivers 80 lumens per foot in 20' or 100' continuous rolls with flip-type connectors.	
CONTINUOUS HY-BRITE LED TAPE LIGHT	PG. 22
24V Flexible Hy-Brite tape light delivers 375 lumens per foot in 20' or 100' continuous rolls with flip-type connectors.	
CONTINUOUS HIGH OUTPUT LED TAPE LIGHT	PG. 22
24V Flexible High Output tape light delivers 450 lumens per foot in 16' or 100' continuous rolls with flip-type connectors.	
M1 MINIATURE LED DOWNLIGHT	PG. 25
12V Miniature 1" downlight, modular system, low profile.	
JOSH LED PUCK LIGHT	PG. 26
12V or 24V Adjustable, surface or recessed mount puck light.	
LED DRIVERS	PG. 28
12V or 24V LED drivers available in a variety of dimming protocols.	

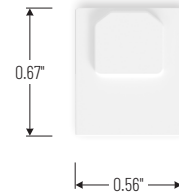




LED LIGHTBAR LINEAR 120V 200LM/FT



Lightbar Lengths: 6", 12", 24", 48"



120V LED Lightbar creates a uniform seamless line of light, with internal magnets for easy installation. Luminaires produce 200 lumens per foot in a Dedicated 3000K CCT. Lightbars are a perfect solution for under cabinet, in cabinet, cove, display, and general commercial, retail and residential lighting applications.

FEATURES:

- 120V system - no driver required
- Uniform reflectance with NO diode image
- 200 lumens and 3W per foot
- Dedicated 3000K at 90+ CRI
- Four different lengths; 6", 12", 24" and 48"
- Easy installation with internal magnets or flat mounting brackets (included)
- End to End Connector included
- Dimmable with Triac / ELV
- White finish
- Can be connected up to 40' per run

INCLUDED WITH EVERY LIGHTBAR:

- (1) End Cap [NULBA-CAP]
 - (1) End to End Connector [NULBA-200]
 - (2) Flat Mounting Brackets [NULBA-MB]
- Note: 48" Lightbars include three mounting clips*

ELECTRICAL:

Voltage: 120V
Lumens/Wattage Per Foot: 200lm / 3W
Color Temperature: 3000K
Color Rendering Index: 90+ CRI
Dimming: Triac or ELV
Max Run Length: 40'

MOUNTING: Each luminaire includes two internal magnets to easily mount to any metal surface. Flat mounting brackets are also included with each luminaire. 90° Swivel mounting brackets and metal plates accessories are also available.

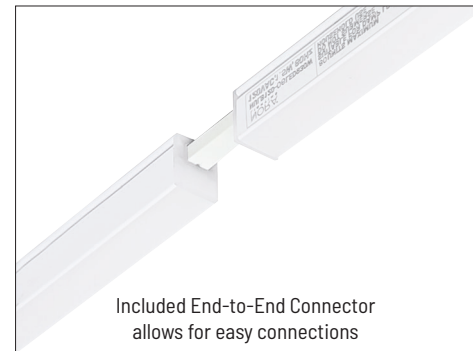
FINISH: White**LISTINGS & WARRANTY:**

- cETLus Listed for Damp Locations
- Certified to the high efficacy requirements of California Title 24 JA8-2022
- FCC compliant
- 5-Year Limited Warranty

**LED LIGHTBAR****LENGTH / LUMENS / WATTAGE**

NULB120-06LED930W	6" / 100lm / 1.5W
NULB120-12LED930W	12" / 200lm / 3W
NULB120-24LED930W	24" / 400lm / 6W
NULB120-48LED930W	48" / 800lm / 12W

Example: **NULB120-24LED930W**
 24" LED Lightbar, 3000K / 90+CRI, White finish

**LIGHTBAR ACCESSORIES**

Note: Each run requires junction box, hardwire connector or cord and plug to power run.

**Junction Box**

NUA-902W White
 Used to power NULB120 Series using hardwire power cord.
 W: 1-3/4" L: 3-5/8" H: 1-1/4"

**2-Wire Hardwire Power Cord**

NULBA-160H 60"
NULBA-196H 96"
 Power cord connects fixture to junction box.

Cord and Plug

NULBA-139P 39"
NULBA-139P-L90 39" with 90° Elbow
 39" Power cord to connect fixture to an outlet.

**Accessories**

NULBA-200 End-to-End Connector
NULBA-206 6" Linking Cable
NULBA-CAP End Cap

(1) End-to-End connector and (1) End Cap are included with each luminaire.

**Mounting Accessories**

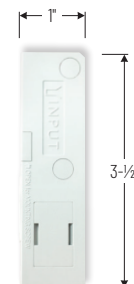
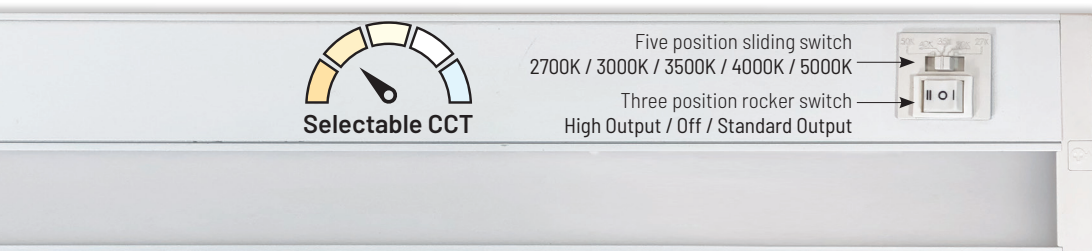
NULBA-MB (2) Flat Brackets
NULBA-MB60 (2) Swivel Brackets
NULBA-MP (2) Metal Plates
NUTP13-ADHTAPE 3M™ Adhesive

(2) Flat mounting brackets are included with each luminaire. Adhesive tape is ordered by feet.



LEDUR & LEDUR TW LINEAR 120V 475LM/FT

DEDICATED CCT OR SELECTABLE



LEDUR & LEDUR TW
Lengths:
8", 11", 18", 22", 32", 42"

The LEDUR series of undercabinet lighting is now available in a Tunable White version that allows the end user to select between kelvin temperatures at time of installation with a three-position switch. LEDUR's built in LED driver, captive mounting screws, and large knockout plate in the back makes LEDUR easy to install. A heavily frosted lens diffuses the LED image and softens the light output.

FEATURES:

- Designated CCT or Tunable White switch
- Up to 475 Lumens per foot
- 7 Watts average per foot
- 90+ CRI
- Frosted Lens / No Diode Image
- Dimmable
- Built-in On/Off switch
- White or Bronze finishes
- Less than 1" in depth
- Each unit can be hardwired with Romex feed
- Each unit includes Romex™ Connector
- Easy to mount with captive screws
- Linkable up to 400 Watts

ELECTRICAL:

Input Voltage: 120V
Lumens / Wattage: Up to 475lm / 7W per foot
Color Temperature: Dedicated 3000K or Selectable CCT (27K / 30K / 35K / 40K / 50K)
CRI: 90+ CRI
Maximum Run Length: 400W max.
Dimming: ELV

MOUNTING: Captive screws make mounting easy and quick.

INCLUDED: Captive screws for mounting, Romex connector, end-to-end connector and tool to remove electrical compartment cover.

FINISHES: Bronze (BZ) or White (W)

LISTINGS & WARRANTY:

- cULus Listed for Dry Location
- ENERGY STAR® Certified
- Certified to the high efficacy requirements of California Title 24 JA8-2022
- 5-Year Limited Warranty



LEDUR LED LINEAR (360LM PER FT.)

SERIES / LENGTH / WATT	CCT	FINISH
NUD-8808 8" / 4.5W	/30 3000K	BZ Bronze
NUD-8811 11" / 6.7W		
NUD-8818 18" / 11W		WH White
NUD-8822 22" / 12W		
NUD-8832 32 3/4" / 16W		
NUD-8842 42" / 20W		

Example: **NUD-8811/30WH**
11" LEDUR Under Cabinet, 3000K, White finish

LEDUR TW LED LINEAR (475LM PER FT.)

SERIES / LENGTH / WATT	CCT	FINISH
NUDTW-8811 11" / 7W	/23345 Selectable CCT (27K / 30K / 35K / 40K / 50K)	BZ Bronze
NUDTW-8818 18" / 9W		
NUDTW-8822 22" / 11W		WH White
NUDTW-8832 32" / 16W		
NUDTW-8842 42" / 20W		

Example: **NUDTW-8811/23345BZ**
11" LEDUR TW Under Cabinet, 27K-30K-35K-40K-50K, Bronze

LEDUR & LEDUR TW ACCESSORIES

Note: Luminaire can be hardwired or with accessories to power run.



Junction Box

NUA-802 B or W

Hardwire box used to power LEDUR Series using jumper cable or NUA-804 (Hardwire Connector).

L: 4" W: 1-3/4" H: 1"

Note: LEDUR Series can be direct wired into fixture.



3-Wire Hardwire Power Cord

NUA-804 B or W

3-Wire grounded connector/cable used to hardwire fixture to NUA-802.

3-Wire 72" Cord & Plug

NUA-805 B or W

Converts fixture from hardwire to direct plug-in units using connector pins on either end of fixture. Grounded plug.



Jumper Cables

NUA-806 6" B or W

NUA-812 12" B or W

NUA-824 24" B or W

NUA-872 72" B or W

Used to join fixtures together or to NUA-802.



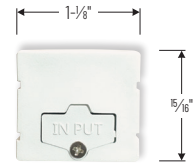
End to End Connector

NUA-803

Use to join fixtures seamlessly together. 3-Wire grounded connector (one included with fixture).



BRAVO FROST TW LED LINEAR 120V 850LM/FT



Bravo FROST TW Lengths: 12", 16", 24", 32"

Low profile LED Bravo FROST offers a diode image-free linear lighting solution for residential and commercial use. Less than 1" in depth, luminaires can be installed under cabinets, within shelves and displays cases, and architectural coves. An encapsulated 120V dimmable LED driver in each unit allows extended runs and easier installation. 0° to 90° adjustable mounting brackets are included.

FEATURES:

- Architectural extruded aluminum construction
- Symmetrical internal reflectors produce broad, even light
- Frosted lens eliminates LED diode image
- 120V linear system
- 850 lumens / 10W per foot
- 90+ CRI
- Field Selectable CTT (3000K, 3500K or 4000K)
- Available in 4 different lengths: 12", 16", 24" or 32"
- Dimmable
- Linkable up to 270 Watts fixtures (about 27ft.)
- Less than 1" depth
- Self contained electronic driver in each unit
- 0° to 90° adjustable mounting brackets included

ELECTRICAL:

Input Voltage: 120V
Lumens / Wattage: 850lm / 10W per foot
Color Temperature: Field Selectable CTT (3000K / 3500K / 4000K)
CRI: 90+ CRI
Maximum Run Length: 270W max.
Dimming: Triac or ELV

MOUNTING: Adjustable mounting brackets 0°-90° (included).

INCLUDED: (2) adjustable mounting brackets and (1) end-to-end connector included with each fixture.

FINISHES: White (W)

LISTINGS & WARRANTY:

- cULus Listed for Dry Location
- ENERGY STAR® Certified
- Certified to the high efficacy requirements of California Title 24 JA8-2022
- 5-Year Limited Warranty



BRAVO FROST TW LED LINEAR

SERIES / LENGTH / WATT	CCT	FINISH
NUDTW-9812 12" / 10W	Selectable CCT (3000K / 3500K / 4000K)	W White
NUDTW-9816 16" / 13W		
NUDTW-9824 24" / 20W		
NUDTW-9832 32" / 26W		

Example: **NUDTW-9812/W**

12" Bravo FROST Tunable White LED Linear,
Selectable CCT (3000K / 3500K / 4000K), White finish



BRAVO FROST TW ACCESSORIES

Note: Each run requires junction box, hardwire connector or cord and plug to power run.



Junction Box

NUA-902W White

Used to power NUDTW-98 Series using hardwire power cord.
W: 1-3/4" L: 3-5/8" H: 1-1/4"



3-Wire Hardwire Power Cord

NUA-904W 72" White

3-Wire connector used to hardwire fixture to NUA-902 (Junction Box).

Cord and Plug

NUA-905W 72" White

6" Grounded AC power cord to connect fixture to an outlet.



Jumper Cables

Series	Length	Finish
NUA-903W	end to end	White
NUA-906W	6"	White
NUA-912W	12"	White
NUA-924W	24"	White
NUA-972W	72"	White

Used to join two fixtures together or to NUA-902 (Junction Box).



Adjustable Mounting Brackets

NUA-909W set of 2 White

Set of two brackets used fixture between 0° to 90°. Two brackets are included with each fixture.



NULS LED LINEAR 120V 525LM/FT



NULS Lengths: 11", 21-3/16", 33", 44-13/16"



NULS LED is an economical way to provide linear lighting in undercabinet, cove, or general lighting applications. The 3-wire system meets most code requirements. Providing bright even illumination, the NULS LED is a perfect solution for energy efficient linear lighting.

FEATURES:

- Slim low profile construction
- Frosted lens eliminates LED diode image
- 120V linear system
- 5W produces 525 lumens per foot
- 80+ CRI
- 2700K, 3000K or 4000K
- Dimmable
- Mounting hardware and end-to-end connector included with each fixture
- DLC Listed
- cULus Listed

ELECTRICAL:

Input Voltage: 120V
Lumens: 525lm per foot
Wattage: 11" / 4W; 21" / 8W; 33" / 12W; 45" / 16W
Color Temperature: 2700K, 3000K or 4000K
Color Rendering Index: 80+ CRI
Maximum Run Length: 120W
Dimming: Triac or ELV

MOUNTING: Mounting hardware included with each unit. Luminaire has an input and output on opposite ends.

INCLUDED: (2) mounting brackets and (1) end-to-end connector included with each fixture.

FINISHES: White (W)

LISTINGS & WARRANTY:

- cULus Listed for Dry Location
- DLC Listed
- 5 Year Limited Warranty



NULS LED LINEAR

SERIES / LENGTH / WATT	CCT	FINISH
NULS-LED10 11" / 4W	27 2700K	W White
NULS-LED21 21-3/16" / 8W	30 3000K	
NULS-LED33 33" / 12W	40 4000K	
NULS-LED45 44-13/16" / 16W		

Example: **NULS-LED2130W**

21" NULS LED Linear, 3000K, White finish



Mounting brackets and end-to-end connector included with each fixture. (NULSA-MTGKIT)

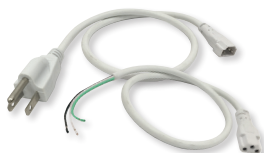
NULS LED LINEAR ACCESSORIES

Note: Each run requires junction box, hardwire connector or cord and plug to power run.



Junction Box NULSA-JBOX

Junction box used to power NULS using jumper cable or NULSA-272-HWC (Hardwire Connector).
 L: 4" W: 1-3/4" H: 1"



3-Wire 72" Hardwire Power Cord NULSA-272-HWC

72" 3-Wire connector used to hardwire fixture to NULSA-JBOX (Junction Box).

3-Wire 72" Cord and Plug NULSA-106

72" Grounded AC power cord to connect fixture to an outlet.



Jumper Cables

NULSA-206	6"
NULSA-212	12"
NULSA-218	18"
NULSA-206-90	6" 90°
NULSA-212-90	12" 90°
NULSA-218-90	18" 90°

Used to join two fixtures together or to junction box. Can be joined together to make custom lengths.



Magnetic Mounting Brackets

NULSA-MAGMC set of 2

For easy mounting to metal shelves, cabinets or surface.

Hardware Kit NULSA-MTGKIT

Included with each fixture.





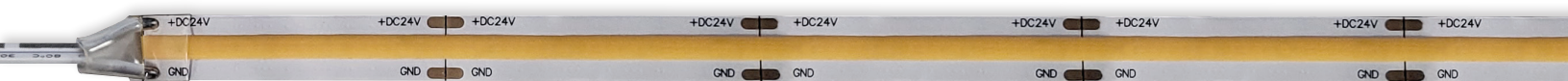
7 Styles of LED Tape Light

LIGHTING DESIGN ONLY LIMITED BY YOUR IMAGINATION

Nora Lighting offers one of the largest selections of LED tape light in the industry. The selection includes a wide variety of outputs and a large selection of installation accessories for large and small jobs. LED tape's small profile, even light distribution and low cost make it the specifier's and lighting designer's choice for lighting applications from A to Z.

FEATURES

- Each tape light roll includes (1) power cord
- Available in rolls up to 100' length
- No soldering / cuttable / 3M™ adhesive back
- COB tape light can be cut every 1.31" (RGBW) or 1.79" (HO & Standard) and connected easily with accessories
- Continuous Rolls can be cut every 4" and connected easily with accessories
- Variety of mounting accessories and channels available for surface or recessed applications



ACTUAL SIZE



SINGLE COLOR

1. IP65 RATED
NUTP13 (120V) · 330 LUMENS / 3.6W PER FOOT
2. COB
NUTP14 (24V) · 450 LUMENS / 4.5W PER FOOT
NUTP15 (24V) · 210 LUMENS / 2.4W PER FOOT
3. SIDE-LIT
NUTP9 (24V) · 70 LUMENS / 1.05W PER FOOT
4. CONTINUOUS ROLLS
NUTP71 (24V) · 80 LUMENS / 1.5W PER FOOT
NUTP51 (24V) · 375 LUMENS / 4.25W PER FOOT
NUTP81 (24V) · 450 LUMENS / 6.5W PER FOOT

MULTI COLOR

5. COMFORT DIM (WARM DIM)
NUTP12 (24V) · 170 LUMENS / 2.44W PER FOOT
WARMS FROM 3000K TO 1800K
6. RGBW COB COLOR CHANGING
NUTPCOB-RGBW (24V) · 300 LUMENS / 5.5W PER FOOT
RED, GREEN, BLUE & WHITE (3000K)
7. CCT COLOR TUNING
NUTP10 (24V) · 290 LUMENS / 2.25W PER FOOT
2500K TO 4500K (SELECTABLE CCT)



120V IP65 LED TAPE LIGHT 120V 330LM/FT

Scan for more info.



Tape Width: 3/4"
Tape Depth: 1/4"
Lengths: 150' max.

120VAC IP65 Rated LED Tape is the perfect solution for indoor or outdoor applications without the need for LED drivers. Producing up to 330 lumens per foot, tape light can be ordered with cord and plug, or hardwired for dimming. The low profile tape is the ideal for coves, architectural details, under and in cabinets, toe kicks, and back lighting.

FEATURES:

- IP65 rated for wet locations
- 120VAC system - integrated LED driver
- Hardwired or Cord & Plug
- 330 lumens / 3.6W per foot
- Dedicated CCT (2700K, 3000K or 4000K)
- Available in custom runs up to 150'
- Factory installed & NOT cuttable
- Sold and shipped as complete system
- Mounting clips included, channels are available

ELECTRICAL:

Voltage: 120VAC

Wattage: 3.6W per foot

Lumens: 330lm per foot

Color Temperature: 2700K, 3000K or 4000K

Color Rendering Index: 90+ CRI

Maximum Run Length: 150' per power feed

Dimming: Triac

MOUNTING: Optional aluminum channels and mounting clips are available. Recommend mounting clip distance is 1' apart.

ACCESSORIES: Tape light is recommended to be used with surge protector accessory when installed outdoors or longer run lengths. Accessories must be ordered together and are factory installed.

LISTINGS & WARRANTY:

- ETLus Listed for Wet Location
- IP65 rated
- RoHS compliant
- 3-Year Limited Warranty for Outdoor Applications
- 5-Year Limited Warranty for Indoor Applications
- 3 Year Limited Warranty



IP65 RATED 120VAC LED TAPE LIGHT

SINGLE LENGTH (SEE PAGE 15 FOR SYSTEM)	CCT	POWER CORD
NUTPI3-W150-12 150' Roll	-927 2700K	/HW Hardwired
	-930 3000K	/HWSP
NUTPI3-WX-Y-12 Custom Cut	-940 4000K	Hardwire w/ Surge Protector /CP Cord & Plug /CPSP Cord & Plug w/ Surge Protector

Example: **NUTPI3-W150-12-930/CP**

150' 120VAC IP65 LED Tape Light Roll, 3.6W per ft., 3000K, Cord & Plug

Custom cut: Must specify length (x=ft. / y=inches) 4" increments only.

CONTINUOUS IP65 RATED TAPE ACCESSORIES



Built-In Surge Protector

/CPSP Cord & Plug
/HWSP Hardwire

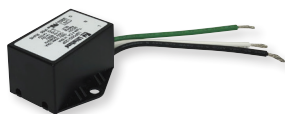
Built in surge protector is used to protect LED tape light from voltage variations. 8' power cord can be hardwired for dimming or plug for standard outlets. Factory installed.



Linking Cable

NATL-IP65/EW-06 6"

6" cable used to for turns or gaps needed between LED tape lights. Factory installed. Consult factory for layout.



Surge Protector

NATL-IP65/SP

External surge protector used to protect LED tape light from voltage variations. Must be used with hardwire power cord.



90° Connector

NATL-IP65/C90-L 90° Left
NATL-IP65/C90-R 90° Right

90° Connector used to turn LED tape light run. Factory installed. Consult factory for layout.



3M™ Adhesive Tape

NUTPI3-ADHTAPE

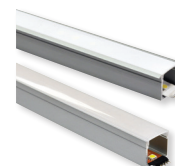
Used to mount tape light to various surfaces



Mounting Clips (Pack of 2)

NATL-IP65I2 Clear

Two included per foot



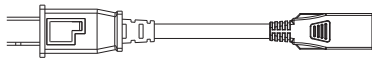
4' Deep Channel

NATL-CIP25A Aluminium w/wing
NATL-CIP26A Aluminium
NATL-CIP26B Black
NATL-CIP26W White

Used to mount tape light to various surfaces. Plastic diffuser, adhesive tape and end caps included. Field cuttable.

120V IP65 LED TAPE LAYOUT WORKSHEET

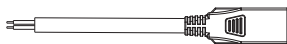
1 Power Feed



/CP = 8' Cord & Plug



/CPSP = 8' Cord & Plug w/ Surge Protector

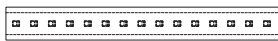


/HW = 8' Hardwired



/HWSP = 8' Hardwired w/ Surge Protector

2 Tape Light Segment



NUTP13-W9-4-12-930
9'-4" Tape Segment, 3000K

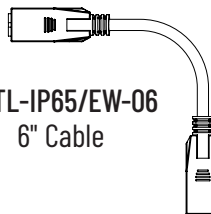
3 Connector



NATL-IP65/C90-L
90° Left



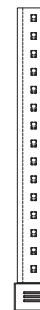
NATL-IP65/C90-R
90° Right



NATL-IP65/EW-06
6" Cable

4 Tape Light Segment

NUTP13-W3-12-930
3' Tape Segment, 3000K



Ordering Matrix (for additional sections, repeat steps 3 and 4)

1 8' Power Feed	2 First Segment Tape Light Length	3 Connector	4 Second Segment Tape Light Length
Cord & Plug	Length: ____ Feet ____ Inches* <small>* Increments of 4"</small>	6" Cable	Length: ____ Feet ____ Inches* <small>* Increments of 4"</small>
Cord & Plug w/ Surge Protector		90° Left	
Hardwired	Color Temperature	90° Right	
Hardwired w/ Surge Protector	2700K 3000K 4000K		

For additional sections,
repeat steps 3 and 4



COB LED TAPE LIGHT 24V 210LM/FT or 450LM/FT



COB LED Tape light creates an uniform seamless line of light, without the need for additional diffused covers or accessories. Producing up to 450 lumens per foot in dedicated color temperatures, tape light is a perfect solution for low clearance or reflective surfaces to eliminate all glare or dotting.

Cuttable every 1.79" at marked intervals

Tape Width: 0.39"
Tape Depth: 0.8"
Lengths: 16.4' or 100' Rolls

FEATURES:

- 24V systems
- Field cuttable every 1.79"; reconnect with accessories
- High Output: 73.8W per 16.4' roll - 4.5W per foot
Standard: 39.4W per 16.4' roll - 2.4W per foot
- Dedicated color temperature (2700K, 3000K, 3500K or 4000K)
- No soldering or additional wiring required
- High Output: 16.4' maximum run length
Standard: 40' maximum run length
- Easy to install with pre-applied 3M™ tape or accessories
- Dimmable with dimmable power supply

ELECTRICAL:

Voltage: 24V
Wattage: 4.5W/ft. (HO) or 2.4W/ft. (Standard)
Lumens: 450lm/ft. (HO) or 210lm/ft. (Standard)
Color Temperature: 2700K, 3000K, 3500K, 4000K
Color Rendering Index: 90+ CRI
Maximum Run Length: 16.4' (HO) or 40' (Standard)

INCLUDED WITH TAPE LIGHT ROLL:

- (1) 16.4' or 100' Tape Light Roll
- (1) 12" power cord
- (32) clear acrylic clips

DRIVER: Required — direct plug-in or Class 2 available.

LISTINGS & WARRANTY:

- cULus Listed for Dry Location
- RoHS compliant
- 5 Year Limited Warranty

COB 24V LED TAPE LIGHT

SERIES / LUMENS	LENGTH	CCT
NUTPI4 450lm/ft.	-COB24CV16 16.4' Roll	-927 2700K
NUTPI5 210lm/ft.	-COB24CV100 100' Roll	-930 3000K
		-935 3500K
		-940 4000K

Example: **NUTPI4-COB24CV100-930**
24V 450lm/ft. COB LED Tape Light, 100' roll, 3000K



Note: See page 29 for more information about drivers.

TAPE LIGHT ACCESSORIES



Hardwire Power Cords
NATLCB-708 12"
NATLCB-708/BC 6" w/DC Connector



Terminal Block Power Feeds
NATLCB-TB Tape-to-Wire
NATLCB-TB/60 with 60" Cord



Terminal Block End-to-End
NATLCB-TB707 Tape-to-Tape



Linking Cables

NATLCB-703 3"
NATLCB-706 6"
NATLCB-718 18"
NATLCB-736 48"
NATLCB-772 72"



Connectors

NATLCB-707 End-to-End
NATLCB-L L Connector
NATLCB-T T Connector
NATLCB-X X Connector



Clear Mounting Clips
NATLCB-709 pack of 15



2' Wire Raceway
NATL-422B black
NATL-422W white



Clips for Wire, White Plastic
NATL-404W J-Clip 10/pk
NATL-405W Over Wire 10/pk
NATL-406W Clip 10/pk

CHANNELS



4' Shallow Recessed Channel
NATL2-C23A aluminum



4' Shallow Channel
NATL2-C24A aluminum



4' Deep Recessed Channel
NATL2-C25A aluminum



4' Deep Channel
NATL2-C26A aluminum



4' Trimless Channel
NATL2-C29W white

DRIVERS & DRIVER ACCESSORIES



NEXUS® All-in-One LED Driver and Dimmer
NATL-SWEX60/24A 24V 60W
NATL-SWEX100/24A 24V 100W



Direct Plug-In LED Driver
NATL-524W 24V 24W
NATL-545W 24V 45W



Direct Plug-In LED Driver
NATL-596W 24V 96W



Class 2 Driver: Non-Dimming
NATL-5100HW 24V 81.6W



Class 2 Driver: PWM, 0-10V, Phase, MLV dimming
NPSU-60W/24 24V 60W
NPSU-96W/24 24V 96W
NPSU-3X96W/24 (3) 24V 96W



Class 2 Driver: ELV dimming
NATLED-5040HW 24V 40W
NATLED-5075HW 24V 75W



Class 2 Driver with Breakers: MLV dimming
NMT-303/24C2D1 120/24V (3) 100W
NMT-303/24C2D2 277/24V (3) 100W



Class 2 Driver with Regulator: MLV dimming
NMTD-60/24D 24V 60W
NMTD-96/24D 24V 96W



Power Line Connector
NATL-10 10"
NATL-30 30"



Power Line Splitter
NATL-302W 5"



Low Voltage Splice Box
NATL-415W



Terminal Block
NATL-407 4-Way
NATL-408 8-Way



RGBW COB LED TAPE LIGHT 24V 300LM/FT

RGB COLOR CHANGING TAPE PLUS A SEPARATE 30K DIODE FOR QUALITY USABLE WHITE LIGHT!



24V RGBW COB LED Tape has alternating LED diodes that are RGBW and White. Users can create any color in the rainbow using a compatible RGBW controller or DMX decoder. COB LED creates an uniform seamless line of light, without the need for additional diffused covers or accessories. Both color settings are programmable and have adjustable brightness and action features that are controlled with the press of a button. This flexible COB LED light source produces up to 300 lumens per foot, a perfect solution for low clearance or reflective surfaces to eliminate all glare or dotting.

Cuttable every
1.31" at marked
intervals

Dedicated
3000K diode

Tape Width: 0.47"
Tape Depth: 0.06"
Lengths: 16.4' Roll

FEATURES:

- 24V DC, 5-wire System
- Delivering up to 300 lumens per foot
- Field cuttable every 1.31"; reconnect with accessories
- 90.2W per roll - 5.5W per foot
- Color Changing tape with a dedicated 3000K diode
- Synchronizable
- 150° Beam Angle
- No soldering or additional wiring required
- 16.4' maximum run length
- Easy to install with pre-applied 3M™ tape or accessories
- Dimmable with RGBW controller or DMX decoder

ELECTRICAL:

Voltage: 24V DC input
Wattage: 5.5W per foot
Lumens: 300lm per foot
Color Temperature: Color Changing RGB with dedicated 3000K diode
Color Rendering Index: 90+ CRI
Maximum Run Length: 16.4'

INCLUDED WITH TAPE LIGHT ROLL:

- (1) 16.4' Tape Light Roll
- (1) 12" power cord
- (32) clear acrylic clips

CONTROLLER: Required for each run. May be linked together for color synchronization.

DRIVER: Required — direct plug-in or Class 2 available.

LISTINGS & WARRANTY:

- cULus Listed for Dry Location
- IP20 Rated
- RoHS compliant
- 5 Year Limited Warranty



RGBW COLOR CHANGING 24V COB LED TAPE LIGHT

SERIES / LENGTH	CCT
NUTPCOB-RGBW24CV16 16.4' Roll	Color Changing RGB with dedicated 30K diode

Example: **NUTPCOB-RGBW24CV16**
RGBW Color Changing COB LED Tape Light, 16.4' Roll

LIGHTING TIP

RGBW LED Tape allows the user to select a beautiful bright 30K light for everyday use and then choose colors for special occasions.

RGBW COLOR CHANGING CONTROLLERS *Note: Each RGBW system requires tape, controller and driver.*



RGBW RF Controller NATL-875

12-24VDC 15A max. A controller is required for each RGBW LED Tape Light run. Installs between the driver and the power line interconnector. The controller can be used to toggle between colors or changing modes.



RGBW Hand Held Remote NATL-877

Used to program RGBW tape light to certain color configurations. Can be used up to control up to four NATL-875 controllers.

Key Selections: Brightness, Colors, Color Changing - Flash, Strobe, Fade and Smooth Fade, On/Off



DMX Decoder for RGBW Tape Light NATL-DMX-4C/RGBW

20A Max. A DMX decoder or RGBW controller is required for each RGBW LED Tape Light run. Installs between the driver and the power line interconnector. The decoder requires a DMX controller (by others) to operate.

Note: Each RGBW system requires tape, controller and driver. Dimming is controlled by RGBW controller or DMX decoder.

TAPE LIGHT ACCESSORIES



Hardwire Power Cord
NATLCB-508 12"



Linking Cables
NATLCB-503 3"
NATLCB-506 6"
NATLCB-518 18"
NATLCB-536 48"
NATLCB-572 72"



End to End Connector
NATLCB-507 clear



Clear Mounting Clips
NATLCB-509 pack of 15

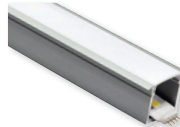
CHANNELS



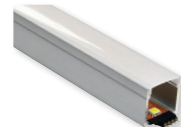
4' Shallow Recessed Channel
NATL-C23A aluminum



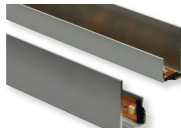
4' Shallow Channel
NATL-C24A aluminum
NATL-C24B black
NATL-C24W white



4' Deep Recessed Channel
NATL-C25A aluminum



4' Deep Channel
NATL-C26A aluminum
NATL-C26W white



4' J-Style Channel
NATL-C27A aluminum



4' Corner Channel
NATL-C28A aluminum
NATL-C28B black
NATL-C28W white

DRIVERS & DRIVER ACCESSORIES



Direct Plug-In LED Driver
NATL-524W 24V 24W
NATL-545W 24V 45W



Direct Plug-In LED Driver
NATL-596W 24V 96W



Class 2 Driver
NATL-5100HW 24V 81.6W



Class 2 Driver
NATLED-5040HW 24V 40W
NATLED-5075HW 24V 75W



Class 2 Driver
NPSU-60W/24 24V 60W
NPSU-96W/24 24V 96W
NPSU-3X96W/24 (3) 24V 96W



Class 2 Driver with Breakers
NMT-303/24C2D1 120/24V (3) 100W
NMT-303/24C2D2 277/24V (3) 100W



Class 2 Driver with Regulator
NMTD-60/24D 24V 60W
NMTD-96/24D 24V 96W



Power Line Connector
NALT-10 10'
NALT-30 30'
NALT-302W 5" Splitter



Low Voltage Splice Box
NATL-415W



Terminal Block
NATL-407 4-Way
NATL-408 8-Way

Notes:

Each RGBW Tape run requires Tape, controller and driver.

Dimmable drivers are only for powering RGBW tape. Dimming is controlled by Controller or DMX Decoder, see page 14.

See page 29 for more information about drivers.



CCT COLOR TUNING LED TAPE LIGHT 24V 290LM/FT

SELECT THE COLOR TEMPERATURE AND INTENSITY OF LIGHT FROM WARM 2500K TO COOL 4500K



Different applications require different Kelvin temperatures to enhance various color spectrums. Use 2500K for a warm red enhancing application and 4500K for a cool, brighter white enhancing application. The RF controller is operated with a remote or controller that lets the end user select the temperature and intensity as the application or mood changes as well as having the option to set optional automatic changing modes.

Cuttable
every 4"
at marked
intervals

Tape Width: 7/16"
Tape Depth: 1/8"
Lengths: 16' Roll,
12" Section, 4" Section

FEATURES:

- 216 LEDs / 36W per roll - 18 LEDs / 2.25W per ft.
- 24VDC / 4-wire system
- Delivering up to 290 lumens per foot
- Change Kelvin temperature from 2500K-4500K with hand held remote or wall controller
- Program temperature and intensity or set optional automatic changing modes
- Synchronizable
- 120° Beam Angle
- No soldering or additional wiring required
- Separable every 12" - easily disconnected and connected without soldering
- Field cuttable every 4" or 6 LEDs
- 30' Maximum run length
- Dimmable with dimmable power supply
- Easy to install with pre-applied 3M™ tape or accessories

ELECTRICAL:

Voltage: 24V
Wattage: 2.25W per foot
Lumens: 290lm per foot
Color Temperature: Color Tuning 2500K-4500K
Color Rendering Index: 80+ CRI
Maximum Run Length: 30'

INCLUDED WITH TAPE LIGHT ROLL:

(1) 16' Tape Light Roll
(1) 12" power line interconnector
(15) clear acrylic clips

DRIVER: Required — direct plug-in or Class 2 available.

CONTROLLER: Required for each run. May be linked together for color synchronization.

LISTINGS & WARRANTY:

- cULus Listed for Damp Location
- IP44 Rated
- 3 Year Limited Warranty



CCT COLOR TUNING 24V LED TAPE LIGHT

SERIES / LENGTH		CCT
NUTP10-W16CCT	16' Roll	Color Tuning 2500K-4500K
NUTP10-WCCT/12	12" Section	
NUTP10-WCCT/4	4" Section	

Example: **NUTP10-W16CCT**
24V Color Tuning (2500K-4500K) LED Tape Light, 16' roll

16' Tape Rolls include sixteen 12" sections.
12" and 4" Tape sections contain male/female ends.

CCT COLOR TUNING CONTROLLERS *Note: Each CCT system requires tape, controller and driver.*



CCT RF Controller NATL-875

12-24VDC 15A max. A controller is required for each CCT LED Tape Light run. Installs between the driver and the power line interconnector. The controller can be used to toggle between colors or changing modes.



CCT Controller Hand Held Remote NATL-877

Used to program CCT tuning tape light to certain configurations. Can be used up to control up to four NATL-875 controllers.

Key Selections: Brightness, Colors, Color Changing - Flash, Strobe, Fade and Smooth Fade, On/Off



CCT Touch Pad Wall Controller NACCT-868

Includes Mounting back box.

Requires: Driver

Local control of CCT, on/off with memory and dimming.

Note: Each CCT system requires tape, controller and driver. Dimming is controlled by CCT controller or DMX decoder.

TAPE LIGHT ACCESSORIES



Power Line Interconnector
NARGB-710W 12"



Controller Power Line Connector
NARGB-762 10"
NARGB-763 30"



Linking Cables
NARGB-702W 2"
NARGB-706W 6"
NARGB-718W 18"
NARGB-736W 36"
NARGB-772W 72"



"Y" Splitter Cable
NARGB-700W



"X" Splitter Cable
NARGB-701W



Shrink Wrap Tube
NATL-400 pack of 5



End Cap
NATL-403 black
NATL-403W white



Clear Acrylic Mounting Clips
NATHR-685 pack of 15



2' Wire Raceway
NATL-422B black
NATL-422W white



Clips for Wire, White Plastic
NATL-404W J-Clip 10/pk
NATL-405W Over Wire 10/pk
NATL-406W Clip 10/pk

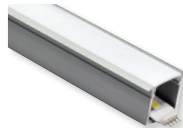
CHANNELS



4' Shallow Recessed Channel
NATL-C23A aluminum



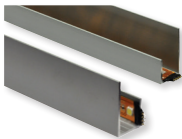
4' Shallow Channel
NATL-C24A aluminum
NATL-C24B black
NATL-C24W white



4' Deep Recessed Channel
NATL-C25A aluminum



4' Deep Channel
NATL-C26A aluminum
NATL-C26W white



4' J-Style Channel
NATL-C27A aluminum



4' Corner Channel
NATL-C28A aluminum
NATL-C28B black
NATL-C28W white



4' Channel
NATHR-680 aluminum
Note: Lens not included

DRIVERS & DRIVER ACCESSORIES



Direct Plug-In LED Driver
NATL-524W 24V 24W
NATL-545W 24V 45W



Direct Plug-In LED Driver
NATL-596W 24V 96W



Class 2 Driver
NATL-5100HW 24V 81.6W



Class 2 Driver
NATLED-5040HW 24V 40W
NATLED-5075HW 24V 75W



Class 2 Driver
NPSU-60W/24 24V 60W
NPSU-96W/24 24V 96W
NPSU-3X96W/24 (3) 24V 96W



Class 2 Driver with Breakers
NMT-303/24C2D1 120/24V (3) 100W
NMT-303/24C2D2 277/24V (3) 100W



Class 2 Driver with Regulator
NMTD-60/24D 24V 60W
NMTD-96/24D 24V 96W



Power Line Connector
NATL-10 10"
NATL-30 30"
NATL-302W 5" Splitter



Low Voltage Splice Box
NATL-415W



Terminal Block
NATL-407 4-Way
NATL-408 8-Way

Bright 3000K dims to Warm 1800K

Scan for more info.



COMFORT DIM LED TAPE LIGHT 24V 170LM/FT

COMFORT DIM TECHNOLOGY WARMS THE COLOR TEMPERATURE WHILE BEING DIMMED



Comfort Dim technology tunes the color temperature as the luminaire is dimmed. Beginning at a bright 3000K, as the tape light is dimmed the color temperature warms to 1800K. LED Tape Light is a perfect solution for your LED linear lighting needs. This energy efficient and very low profile LED Tape is great for use in cove lighting, architectural enhancements, under cabinet or many more discreet locations.

Cuttable every 2" at marked intervals

Tape Width: 7/8"
Tape Depth: 1/8"
Lengths: 16' Roll

FEATURES:

- 24V systems
- Delivering up to 170 lumens per foot
- Field cuttable every 2"; reconnect with interconnection cables
- 39W per roll - 2.44W per foot
- Warms the kelvin temperature from 3000K to 1800K when dimmed
- No soldering or additional wiring required
- 16' maximum run length
- Easy to install with pre-applied 3M™ tape or accessories
- Dimmable with Dimmable Magnetic Low Voltage Driver

ELECTRICAL:

Voltage: 24V
Wattage: 2.44W per foot
Lumens: 170lm per foot
Color Temperature: Comfort Dim color tunes the temperature from a bright 3000K, to a romantic and comfortable 1800K
Color Rendering Index: 90+ CRI
Maximum Run Length: 16'
Dimming: Magnetic Low Voltage

INCLUDED WITH TAPE LIGHT ROLL:

- (1) 16' Tape Light Roll
- (1) 12" power line interconnector
- (15) clear acrylic clips

DRIVER: Requires magnetic low voltage driver to be used with a magnetic low voltage dimmer.

LISTINGS & WARRANTY:

- cULus Listed for Damp Location
- 3 Year Limited Warranty



COMFORT DIM 24V LED TAPE LIGHT

SERIES / LENGTH		CCT
NUTP12-W16LEDCD	16' Roll	Comfort Dim 3000K-1800K

Example: **NUTP12-W16LEDCD**
24V Comfort Dim LED Tape Light, 16' roll



Note: See page 29 for more information about drivers.

TAPE LIGHT ACCESSORIES



Power Cord w/ DC Connector
NATLCD-210 12"



Linking Cables
NATLCD-203 3"
NATLCD-206 6"
NATLCD-224 24"
NATLCD-248 48"
NATLCD-272 72"



Clear Acrylic Mounting Clips
NATL-401 pack of 15



2' Wire Raceway
NATL-422B black
NATL-422W white



Clips for Wire, White Plastic
NATL-404W J-Clip 10/pk
NATL-405W Over Wire 10/pk
NATL-406W Clip 10/pk

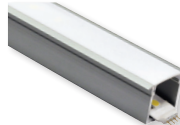
CHANNELS



4' Shallow Recessed Channel
NATL-C23A aluminum



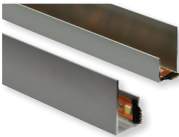
4' Shallow Channel
NATL-C24A aluminum
NATL-C24B black
NATL-C24W white



4' Deep Recessed Channel
NATL-C25A aluminum



4' Deep Channel
NATL-C26A aluminum
NATL-C26W white



4' J-Style Channel
NATL-C27A aluminum



4' Corner Channel
NATL-C28A aluminum
NATL-C28B black
NATL-C28W white



4' Channel
NATHR-680 aluminum
Note: Lens not included

DRIVERS & DRIVER ACCESSORIES



Class 2 Driver with Breakers:
MLV dimming
NMT-303/24C2D1 120/24V (3) 100W
NMT-303/24C2D2 277/24V (3) 100W



Class 2 Driver with Regulator:
MLV dimming
NMTD-60/24D 24V 60W
NMTD-96/24D 24V 96W



Power Line Connector
NATL-10 10'
NATL-30 30'



Power Line Splitter
NATL-302W 5"



Low Voltage Splice Box
NATL-415W



Terminal Block
NATL-407 4-Way
NATL-408 8-Way

Notes:

Each Comfort Dim Tape run requires a magnetic driver and dimmer.

See page 29 for more information about drivers.



SIDE LIT LED TAPE LIGHT 24V 70LM/FT

Scan for more info.



FEATURES:

- Illuminates to the side, parallel to the mounting surface
- 70 Lumens per foot
- 16.8W per roll - 1.05W per foot
- 24V DC single color illumination
- Two color outputs available:
Warm White (3000K) or Warm White (2700K)
- Separable every 12"; easily disconnect and connect without soldering
- Field cuttable every 4" or 6 LEDs
- 64' Maximum run length
- Easy to install with pre-applied 3M™ tape or accessories
- Dimmable with dimmable power supply

ELECTRICAL:

Voltage: 24V
Lumens / Wattage: 70lm / 1.05W per foot
Light Source: 18 LEDs per foot
Color Temperature: 2700K or 3000K
Color Rendering Index: 80+ CRI
Maximum Run Length: 64'

INCLUDED WITH TAPE LIGHT ROLL:

- (1) 16' Tape Light Roll
- (1) 9" power line interconnector
- (15) clear acrylic clips

DRIVER: Required — direct plug-in or Class 2 available.

LISTINGS & WARRANTY:

- cULus Listed for Damp Location
- 3 Year Limited Warranty



Cutttable
every 4"
at marked
intervals



Side Lit tape
illuminates to the
side, parallel to the
mounting surface

Tape Width: 7/16"
Tape Depth: 1/16"
Lengths: 16' Roll,
12" Section, 4" Section

SIDE-LIT 24V LED TAPE LIGHT

SERIES / LENGTH		CCT
NUTP9-16LED(CCT)	16' Roll	27 2700K
	12" Section	30 3000K
NUTP9-LED(CCT)/12	12" Section	
NUTP9-LED(CCT)/4	4" Section	

Example: **NUTP9-16LED30**
 24V Side-Lit Tape Light, 16' Roll, 3000K

16' Tape Rolls include sixteen 12" sections.
 12" and 4" Tape sections contain male/female ends.



Note: See page 29 for more information about drivers.

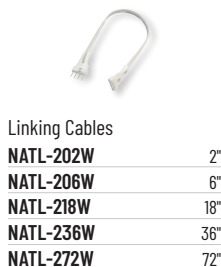
TAPE LIGHT ACCESSORIES



Power Cord w/ DC Connector
NATL-509W 9"



Power Cord with On/Off Switch
NATL-511W 11"



Linking Cables
NATL-202W 2"
NATL-206W 6"
NATL-218W 18"
NATL-236W 36"
NATL-272W 72"



"Y" Splitter Cable
NATL-300W



"X" Splitter Cable
NATL-301W



Shrink Wrap Tube
NATL-400 pack of 5



End Cap
NATL-403 black
NATL-403W white



Clear Acrylic Mounting Clips
NATL-401 pack of 15



2' Wire Raceway
NATL-422B black
NATL-422W white



Clips for Wire, White Plastic
NATL-404W J-Clip 10/pk
NATL-405W Over Wire 10/pk
NATL-406W Clip 10/pk

CHANNELS



4' Shallow Recessed Channel
NATL-C23A aluminum



4' Shallow Channel
NATL-C24A aluminum
NATL-C24B black
NATL-C24W white



4' Deep Recessed Channel
NATL-C25A aluminum



4' Deep Channel
NATL-C26A aluminum
NATL-C26W white



4' J-Style Channel
NATL-C27A aluminum



4' Corner Channel
NATL-C28A aluminum
NATL-C28B black
NATL-C28W white



4' Channel
NATHR-680 aluminum
Note: Lens not included

DRIVERS & DRIVER ACCESSORIES



NEXUS® All-in-One LED Driver and Dimmer
NATL-SWEX60/24A 24V 60W
NATL-SWEX100/24A 24V 100W



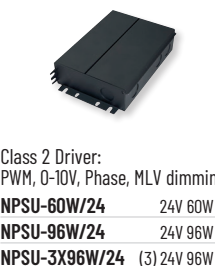
Direct Plug-In LED Driver
NATL-524W 24V 24W
NATL-545W 24V 45W



Direct Plug-In LED Driver
NATL-596W 24V 96W



Class 2 Driver: Non-Dimming
NATL-5100HW 24V 81.6W



Class 2 Driver:
PWM, 0-10V, Phase, MLV dimming
NPSU-60W/24 24V 60W
NPSU-96W/24 24V 96W
NPSU-3X96W/24 (3) 24V 96W



Class 2 Driver:
ELV dimming
NATLED-5040HW 24V 40W
NATLED-5075HW 24V 75W



Class 2 Driver with Breakers:
MLV dimming
NMT-303/24C2D1 120/24V (3) 100W
NMT-303/24C2D2 277/24V (3) 100W



Class 2 Driver with Regulator:
MLV dimming
NMTD-60/24D 24V 60W
NMTD-96/24D 24V 96W



Power Line Connector
NATL-10 10'
NATL-30 30'



Power Line Splitter
NATL-302W 5"



Touch Dimmer
NATL-518W



Low Voltage Splice Box
NATL-415W



Terminal Block
NATL-407 4-Way
NATL-408 8-Way



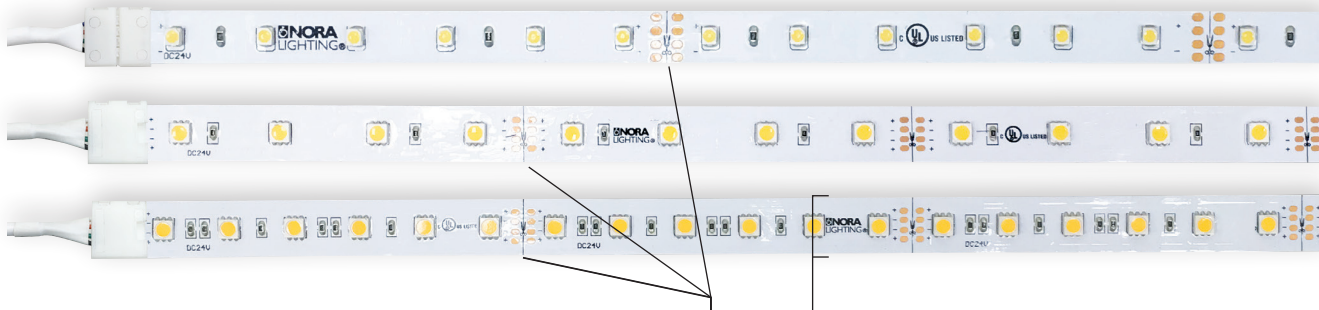
CONTINUOUS ROLL LED TAPE 24V Standard / Hy-Brite / High Output



NUTP71
STANDARD

NUTP51
HY-BRITE

NUTP81
HIGH OUTPUT



FEATURES:

- Continuous 100', 20' or 16' rolls
- 24V DC System
- Available in three outputs (450lm, 375lm or 80lm per foot)
- Available in three color outputs: Cool White (4200K), Warm White (3000K), Warm White (2700K)
- 90+ CRI
- Dedicated Flip type connectors
- Field cuttable every 4"
- No soldering
- Easy to install with pre-applied 3M™ tape or optional channels, acrylic clips or raceway accessories
- Dimmable with dimmable power supply

ELECTRICAL:

Voltage: 24V

Lumens / Wattage:

NUTP51 - 375lm / 4.25W per foot

NUTP71 - 80lm / 1.5W per foot

NUTP81 - 450lm / 6.5W per foot

Light Source: 18 LEDs per foot

Color Rendering Index: 90+ CRI

Color Temperature: 2700K, 3000K, 4200K

Maximum Run:

25' (NUTP51), 64' (NUTP71) or 16' (NUTP81)

INCLUDED WITH 100' TAPE LIGHT ROLL:

(1) 100' Tape Light Roll

(1) 12" power line interconnector

(50) clear acrylic clips

INCLUDED WITH 20' OR 16' ROLL:

(1) 20' or 16' Tape Light Roll

(1) 12" power line interconnector

(10) clear acrylic clips

DRIVER: Required — direct plug-in or Class 2 available.

LISTINGS & WARRANTY:

- cULus Listed for Damp Location
- 3 Year Limited Warranty



Cuttable
every 4"
at marked
intervals

	NUTP71	NUTP51	NUTP81
Tape Width:	3/16"	1/2"	1/2"
Tape Depth:	1/16"	1/8"	1/8"
Lengths:	100', 20' or 16' Roll		

Available in rolls and field cuttable every 4"

24V CONTINUOUS LED TAPE LIGHT

TYPE	SERIES / LENGTH	CCT
HY-BRITE	NUTP51-W100LED(CCT) 100' Roll	927 2700K 930 3000K 942 4200K
	NUTP51-W20LED(CCT) 20' Roll	
STANDARD	NUTP71-W100LED(CCT) 100' Roll	927 2700K 930 3000K 942 4200K
	NUTP71-W20LED(CCT) 20' Roll	
HIGH OUTPUT	NUTP81-W100LED(CCT) 100' Roll	927 2700K 930 3000K 942 4200K
	NUTP81-W16LED(CCT) 16' Roll	

Example: **NUTP71-W100LED930**

24V Continuous Standard LED Tape Light, 100' roll, 3000K

Note: Consult factory for custom cuts.



Note: See page 29 for more information about drivers.

TAPE LIGHT ACCESSORIES



Hardwire Power Cords	
NATLCFC-(S)08/3A	3"
NATLCFC-(S)08/12A	12"
NATLCFC-(S)08/48A	48"
NATLCFC-(S)08/96A	96"



Power Cords w/ DC Connector	
NATLCFC-(S)09/3A	3"
NATLCFC-(S)09/12A	12"
NATLCFC-(S)09/48A	48"
NATLCFC-(S)09/96A	96"



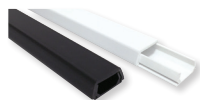
Linking Cables	
NATLCFC-(S)03A	3"
NATLCFC-(S)06A	6"
NATLCFC-(S)12A	12"
NATLCFC-(S)24A	24"
NATLCFC-(S)48A	48"
NATLCFC-(S)72A	72"



End-to-End Connector	
NATLCFC-(S)00A	



Clear Acrylic Mounting Clips	
NATHR-685	pack of 15



2' Wire Raceway	
NATL-422B	black
NATL-422W	white



Clips for Wire, White Plastic	
NATL-404W	J-Clip 10/pk
NATL-405W	Over Wire 10/pk
NATL-406W	Clip 10/pk

Tape Style (S):

2 NUTP71 or

6 NUTP51 or NUTP81

Example: NATLCFC-212A

12" flip type interconnection for NUTP71 tape.

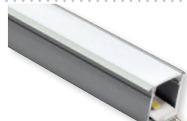
CHANNELS



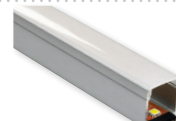
4' Shallow Recessed Channel	
NATL-C23A	aluminum



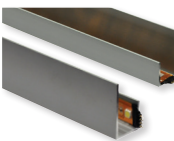
4' Shallow Channel	
NATL-C24A	aluminum
NATL-C24B	black
NATL-C24W	white



4' Deep Recessed Channel	
NATL-C25A	aluminum



4' Deep Channel	
NATL-C26A	aluminum
NATL-C26W	white



4' J-Style Channel	
NATL-C27A	aluminum



4' Corner Channel	
NATL-C28A	aluminum
NATL-C28B	black
NATL-C28W	white



4' Channel	
NATHR-680	aluminum

Note: Lens not included

DRIVERS & DRIVER ACCESSORIES



NEXUS® All-in-One LED Driver and Dimmer	
NATL-SWEX60/24A	24V 60W
NATL-SWEX100/24A	24V 100W



Direct Plug-In LED Driver	
NATL-524W	24V 24W
NATL-545W	24V 45W



Direct Plug-In LED Driver	
NATL-596W	24V 96W



Class 2 Driver: Non-Dimming	
NATL-5100HW	24V 81.6W



Class 2 Driver: PWM, 0-10V, Phase, MLV dimming	
NPSU-60W/24	24V 60W
NPSU-96W/24	24V 96W
NPSU-3X96W/24	(3) 24V 96W



Class 2 Driver: ELV dimming	
NATLED-5040HW	24V 40W
NATLED-5075HW	24V 75W



Class 2 Driver with Breakers: MLV dimming	
NMT-303/24C2D1	120/24V (3) 100W
NMT-303/24C2D2	277/24V (3) 100W



Class 2 Driver with Regulator: MLV dimming	
NMTD-60/24D	24V 60W
NMTD-96/24D	24V 96W



Power Line Connector	
NATL-10	10'
NATL-30	30'



Power Line Splitter	
NATL-302W	5"



Touch Dimmer	
NATL-518W	



Low Voltage Splice Box	
NATL-415W	



Terminal Block	
NATL-407	4-Way
NATL-408	8-Way



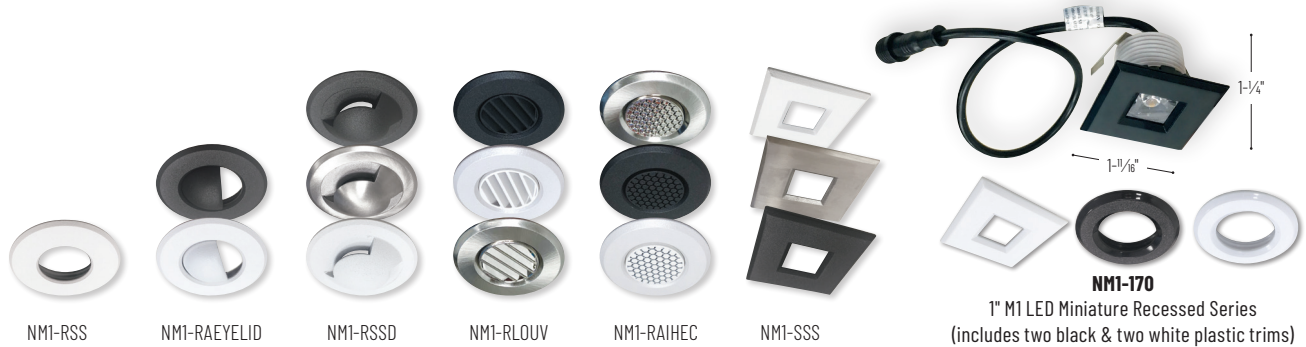
Scan for more info.



MINIATURE DOWNLIGHT · SINGLE COLOR



M1 SERIES 1" MINIATURE RECESSED 12V 100LM / 2W



M1 miniature recessed series features quality and convenience with easy installation for indoor or outdoor applications. Each luminaire includes four plastic downlight trims, three optics and a 6" quick connect. Series is available in 2700K or 3000K and requires a 12VDC driver.

FEATURES:

- No housing required
- Each luminaire includes four plastic trims (2 square and 2 round in white and black finishes), three optics and a 6" quick connect
- Field changeable optics (spot, narrow and flood)
- Threaded LED module allows for field changeable trims
- Prewired junction box for easy installation
- Quick disconnect allows for extended lengths
- IC rated for direct contact with insulation, no minimum clearance required
- Remodel or new construction applications

ELECTRICAL:

Voltage: 12V DC
Lumens / Wattage: 100lm / 2W
Color Rendering Index: 90+ CRI
Color Temperature: 2700K or 3000K
Dimming: Triac or ELV

MOUNTING: Recessed, no housing required.

DRIVER: 12VDC Driver required.

NMI-DVR12: 12VDC 12W Non-Dimmable Driver
NAPKED-5040HW: 12VDC 35W ELV Dimmable Driver
NAPKED-5060HW: 12VDC 60W ELV Dimmable Driver

LISTINGS & WARRANTY:

- cETLus Listed for Wet Locations
- 5-Year Limited Warranty
- FCC compliant



M1 SERIES LED MODULE

SERIES / LM / W	CCT	FINISH
NMI-170 100lm / 2W	27X 2700K 30X 3000K	2PBW (2) Square Plastic Trims in Black and White (2) Round Plastic Trims in Black and White

Example: **NMI-17030X2PBW** (Requires 12V Dimmable Driver)
1" M1 LED Module and (4) Plastic Trims

M1 SERIES TRIMS (OPTIONAL)

SERIES / DESCRIPTION	FINISH
NMI-RSS 1" Round Stainless Steel	B Black
NMI-RAEYELID 1" Round Scoop	BN Brushed Nickel
NMI-RSSD 1" Round Stainless Indicator	W White
NMI-RLOUV 1" Round Louver	
NMI-RAIHEC 1" Round Hexcell Louver	
NMI-SSS 1" Square M1 Stainless Steel	

Example: **NMI-RSSB**
M1 1" Round Stainless Steel Trim, Black finish

M1 MINIATURE RECESSED ACCESSORIES



Driver: Non-Dimmable
NMI-DVR12 12W

Driver: Triac or ELV dimming
NAPKED-5040HW 35W
NAPKED-5060HW 60W

Input Voltage: 120V
Output Voltage: 12V DC

Hardwire Power Feed
NMI-HWPC/24 24"



Linking Cables

NMI-EXT6	6"
NMI-EXT12	12"
NMI-EXT18	18"
NMI-EXT48	48"
NMI-EXT240	240"

Use to extend the length between luminaire and driver / splitter / wire harness. Can be connected together to create custom lengths.



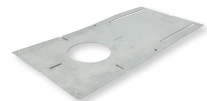
Splitter Cable
(1 input - 6 output)
NMI-TM6

Use to connect up to (6) NM1 LED modules to an LED driver. Input wire length: 4-3/4"
Output wire lengths: 5-1/4" each



Wire Harness System
NMI-WH6

Use to connect up to (6) NM1 LED modules to an LED driver on an evenly spaced wire. Each 6" dropped is spaced 32-1/2" on center. Spacing between luminaires: 32-1/2"
Output wire length: 6" each



New Construction Frame-In
NMI-F

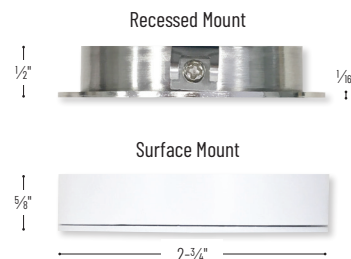
For new construction pre-wiring and easier layout planning

PUCK LIGHTS · SINGLE COLOR



JOSH LED PUCK LIGHT 12V or 24V

Scan for more info.



FEATURES:

- Recessed or surface mounted
- 12V or 24V DC system
- 300 lumens / 3.5W
- Dedicated CCT: 2700K, 3000K, 3500K or 4000K
- Available in four finishes: Black, Brushed Nickel, Bronze or White
- 72" cable pre-installed with quick connect
- Six fixtures can be connected to interconnect

ELECTRICAL:

Voltage: 12V or 24V
Lumens / Wattage: 300lm / 3.5W
Color Temperature: 2700K, 3000K, 3500K or 4000K
Color Rendering Index: 90+ CRI

DRIVER: Required — direct plug-in or Class 2 available.

LISTINGS & WARRANTY:

- cULus Listed for Damp Location
- 5 Year Limited Warranty



JOSH FIXED LED PUCK LIGHT

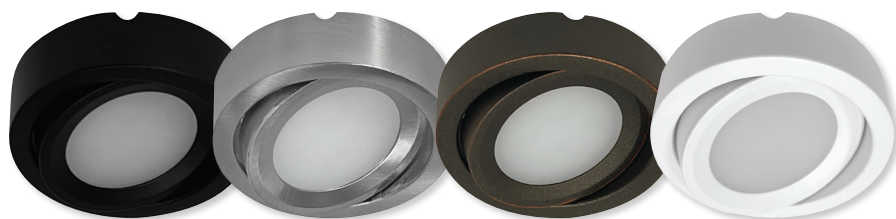
SERIES / INPUT VOLTAGE	CCT	FINISH
NMP-LED 12V	27 2700K	B Black
NMP2-LED 24V	30 3000K	BN Brushed Nickel
	35 3500K	BZ Bronze
	40 4000K	W White

Example: **NMP2-LED30BZ**
 24V Josh Fixed LED Puck Light, 3000K, Bronze finish



JOSH ADJUSTABLE LED PUCK LIGHT 12V or 24V

Scan for more info.



Recessed with NMP-AREC



FEATURES:

- 18° Adjustable
- Surface mounted or recessed (with accessory)
- 12V or 24V DC system
- 300 lumens / 3.5W
- Dedicated CCT: 2700K, 3000K, 3500K or 4000K
- Available in four finishes: Black, Brushed Nickel, Bronze or White
- 72" cable pre-installed with quick connect
- Six fixtures can be connected to interconnect

ELECTRICAL:

Voltage: 12V or 24V
Lumens / Wattage: 300lm / 3.5W
Color Temperature: 2700K, 3000K, 3500K or 4000K
Color Rendering Index: 90+ CRI

DRIVER: Required — direct plug-in or Class 2 available.

LISTINGS & WARRANTY:

- cULus Listed for Damp Location
- 5 Year Limited Warranty



JOSH ADJUSTABLE LED PUCK LIGHT

SERIES / INPUT VOLTAGE	CCT	FINISH
NMP-A 12V	27 2700K	B Black
NMP2-A 24V	30 3000K	BN Brushed Nickel
	35 3500K	BZ Bronze
	40 4000K	W White

Example: **NMP2-A30BZ**
 24V Josh Adjustable LED Puck Light, 3000K, Bronze finish

Note: See pages 28-29 for more information about drivers.

PUCK LIGHT ACCESSORIES



6-Port Power Line Interconnect

NMPA-6P-24B	black
NMPA-6P-24W	white



Extension Cables

NMPA-EW-12	12"
NMPA-EW-24	24"
NMPA-EW-36	36"
NMPA-EW-48	48"



Recessed Flange for Adjustable

NMP-ARECB	black
NMP-ARECBN	brushed nickel
NMP-ARECBZ	bronze
NMP-ARECW	white



2' Wire Raceway

NATL-422B	black
NATL-422W	white



Clips for Wire, White Plastic

NATL-404W	J-Clip 10/pk
NATL-405W	Over Wire 10/pk
NATL-406W	Clip 10/pk

12V DRIVERS



Direct Plug-In LED Driver
NAPK-524W/12 12V 24W



Direct Plug-In LED Driver
NAPK-560W/12 12V 60W



Class 2 Driver: 0-10V dimming
NATL-5060-12-HWD10 12V 60W



Class 2 Driver:
PWM, 0-10V, Phase, MLV dimming
NPSU-60W/12 12V 60W



Class 2 Driver:
ELV dimming
NAPKED-5040HW 12V 35W
NAPKED-5060HW 12V 60W



Class 2 Driver with Breakers:
MLV dimming
NMT-244/12C2D1 120/12V (4) 60W
NMT-244/12C2D2 277/12V (4) 60W



Class 2 Driver with Regulator:
MLV dimming
NMTD-60/12D 12V 60W

24V DRIVERS



Direct Plug-In LED Driver
NATL-524W 24V 24W
NATL-545W 24V 45W



Direct Plug-In LED Driver
NATL-596W 24V 96W



Class 2 Driver: Non-Dimming
NATL-5100HW 24V 81.6W



Class 2 Driver:
PWM, 0-10V, Phase, MLV dimming
NPSU-60W/24 24V 60W
NPSU-96W/24 24V 96W
NPSU-3X96W/24 (3) 24V 96W



Class 2 Driver:
ELV dimming
NATLED-5040HW 24V 40W
NATLED-5075HW 24V 75W



Class 2 Driver with Breakers:
MLV dimming
NMT-303/24C2D1 120/24V (3) 100W
NMT-303/24C2D2 277/24V (3) 100W



Class 2 Driver with Regulator:
MLV dimming
NMTD-60/24D 24V 60W
NMTD-96/24D 24V 96W

DRIVER ACCESSORIES



Power Line Connector
NATL-10 10'
NATL-30 30'



Power Line Splitter
NATL-302W 5'



Touch Dimmer
NATL-518W







Low Voltage Splice Box
NATL-415W



Terminal Block
NATL-407 4-Way
NATL-408 8-Way

12V LED DRIVERS

	INPUT VOLTAGE	OUTPUT VOLTAGE / WATTAGE	DIMMING	ITEM NO.	JOSH PUCK LIGHT	DIMENSIONS / DESCRIPTION
	Direct Plug-In LED Driver					
	120V	12V 24W	Non-Dimmable	NAPK-524W/12	•	4' Cord and Plug, White finish
	Direct Plug-In LED Driver					
	120V	12V 50W	Non-Dimmable	NAPK-560W/12	•	4' Cord and Plug & 4' Power Line Connector
	Class 2 Hardwire LED Driver Includes 10' Power Line Connector					
	120V	12V 35W	ELV	NAPKED-5040HW	•	Width: 2-1/8" Length: 9-1/2" Height: 1-1/2"
	120V	12V 60W	ELV	NAPKED-5060HW	•	Width: 2-1/8" Length: 9-1/2" Height: 1-1/2"
	Class 2 Hardwire LED Driver Power Line Connector <u>not</u> included					
	110-277V	12V 60W	ELV, MLV, 0-10V, PWM	NPSU-60W/12	•	Width: 4-7/8" Length: 6-1/4" Height: 1-5/8"
	Class 2 Hardwire LED Driver Includes 10' Power Line Connector					
	120V-277V	12V 60W	0-10V	NATL-5060-12-HWD10	•	Width: 3-3/8" Length: 11-1/4" Height: 3-1/4"
	Class 2 Hardwire LED Driver with (4) 60W Breakers Power Line Connector(s) <u>not</u> included					
	120V	12V 240W	MLV	NMT-244/12C2D1	•	Width: 8-1/2" Length: 13" Height: 4-3/8"
	277V	12V 240W	MLV	NMT-244/12C2D2	•	Width: 8-1/2" Length: 13" Height: 4-3/8"
	Class 2 Hardwire LED Driver with Regulator Includes 10' Power Line Connector					
	120V-277V	12V 60W	MLV	NMTD-60/12D	•	Width: 3" Length: 10" Height: 2-7/8"

DRIVER ACCESSORIES



Power Line Connector
NATL-10 10' Cable
NATL-30 30' Cable
 For use with Class 2 drivers.

Power Line Splitter
NATL-302W 5' Cable
 Splits power line connector into two separate leads, requires power line cable.



Touch Dimmer
NATL-518W
 72W max., no power fail memory, touch on/off and hold to dim.



Low Voltage Splice Box
NATL-415W
 Joins low voltage lead to low voltage power line connector or interconnector.



Terminal Block
NATL-407 4-Way
NATL-408 8-Way

24V LED DRIVERS

	INPUT VOLTAGE	OUTPUT VOLTAGE / WATTAGE	DIMMING	ITEM NO.	COB TAPE	RGBW COB TAPE	CCT TAPE	COMFORT DIM TAPE	SIDE LIT TAPE	CONTINUOUS TAPE	JOSH PUCK LIGHT
	NEXUS® All-In-One LED Driver and Dimmer Eliminates driver. Allows 120V input from single gang box. On/Off switch.										
	120V	24V 60W	Integral 100-5%	NATL-SWEX60/24A	•				•	•	
	120V	24V 100W	Integral 100-5%	NATL-SWEX100/24A	•				•	•	
	Direct Plug-In LED Driver Dimensions: 4' Cord and Plug										
	120V	24V 24W	Non-Dimmable	NATL-524W	•	•	•		•	•	•
	120V	24V 45W	Non-Dimmable	NATL-545W	•	•	•		•	•	•
	Direct Plug-In LED Driver Dimensions: 55" Cord and Plug and 44" Power Line Connector										
	120V	24V 96W	Non-Dimmable	NATL-596W	•	•	•		•	•	•
	Class 2 Hardwire LED Driver Includes 10' Power Line Connector Dimensions: W: 3-3/8" L: 11-1/4" H: 3-1/4"										
	120V-240V	24V 81.6W	Non-Dimmable	NATL-5100HW	•	•	•		•	•	•
	Class 2 Hardwire LED Driver Includes 10' Power Line Connector Dimensions: W: 2-1/8" L: 9-1/2" H: 1-1/2"										
	120V	24V 40W	ELV	NATLED-5040HW	•	•	•		•	•	•
	120V	24V 75W	ELV	NATLED-5075HW	•	•	•		•	•	•
	Class 2 Hardwire LED Driver Power Line Connector(s) <u>not</u> included										
	110-277V	24V 60W	ELV, MLV, 0-10V, PWM	NPSU-60W/24	•	•	•		•	•	•
	110-277V	24V 96W	ELV, MLV, 0-10V, PWM	NPSU-96W/24	•	•	•		•	•	•
	110-277V	24V 288W	ELV, MLV, 0-10V, PWM	NPSU-3X96W/24	•	•	•		•	•	•
	Class 2 Hardwire LED Driver with (3) 100W Breakers Power Line Connector <u>not</u> included										
	120V	24V 300W	MLV	NMT-303/24C2D1	•	•	•	•	•	•	•
	277V	24V 300W	MLV	NMT-303/24C2D2	•	•	•	•	•	•	•
	Class 2 Hardwire LED Driver with Regulator Includes 10' Power Line Connector										
	120V-277V	24V 60W	MLV	NMTD-60/24D	•	•	•	•	•	•	•
	120V-277V	24V 96W	MLV	NMTD-96/24D	•	•	•	•	•	•	•

DRIVER ACCESSORIES



Power Line Connector
NATL-10 10' Cable
NATL-30 30' Cable
 For use with Class 2 drivers.

Power Line Splitter
NATL-302W 5" Cable
 Splits power line connector into two separate leads, requires power line cable.



Touch Dimmer
NATL-518W
 72W max., no power fail memory, touch on/off and hold to dim.



Low Voltage Splice Box
NATL-415W
 Joins low voltage lead to low voltage power line connector or interconnector.



Terminal Block
NATL-407 4-Way
NATL-408 8-Way

**NORA LIGHTING, INC.**

6505 Gayhart St.
Commerce, CA 90040
TEL 323.767.2600
FAX 323.722.3677
www.NoraLighting.com

DOMESTIC FACILITIES:

Atlanta, GA
Cincinnati, OH
Dallas, TX
Detroit, MI
Edison, NJ
Los Angeles, CA
Louisville, KY
Minneapolis, MN
Nashville, TN

INTERNATIONAL SALES:

6505 Gayhart St.
Commerce, CA 90040
TEL 323.767.2600
FAX 323.722.3677

The products shown in this catalog
are covered by USA and International
patents. Specifications subject to
change without notice.

© Copyright 2024 Nora Lighting, Inc.
All rights reserved

