

NFBIC-6INCATA

6" Recessed Line Voltage Fire Rated Housing - Two Hour Fire & Sound Dampening Rated

Source: 90W max.

(Lamp type varies per trim)

Type

Project

Catalog No.

Notes

PRODUCT DESCRIPTION

Specification grade fire-rated new construction housing. The double wall fixture incorporates a non-combustible fiber insulation to prevent passage of flames, toxic gases, ignitable gasses into ceiling plenums. cULus listed housing with two-hour fire rated classification. The noncombustible fiber fill also acts as sound deadening material eliminating the transfer of sound between floors. Suitable for commercial, multi-family and residential applications.

FEATURES

- Rated for direct contact with insulation
- cULus classified Two Hour Fire Rating
- cULus listed for wet location and through branch circuit wiring
- 24-1/2" Bar hangers with captive nails & alignment feet
- Accommodates 1-3/4" maximum ceiling thickness

CONSTRUCTION

Plaster Frame: High quality 0.03" steel die cut one piece frame.

Housing: Die formed 22 gauge galvanized steel construction. Housing interior is comprised of a flexible non-combustible insulation.

Air Flow Restriction: Housing has factory installed gaskets to restrict airflow from room into ceiling plenum to <2CFM (cubic feet per minute) in accordance with ASTM-283 Air-Tight requirements.

Clearance: "IC" Insulated ceiling housings are direct contact rated. **Not to be used in direct contact with spray foam insulation.**

Bar Hangers: Two 13-3/4" to 24-1/2" adjustable bar hangers with captive nails are included on frame. Bar hangers are parallel to junction box, but can be repositioned 90° perpendicular to junction box if desired. "L" Shaped bar hanger foot to align to bottom of construction joist. A T-Bar notch allow for easy installation in a suspended ceiling.

Installation: Classified for use in two hour fire rated L500 Series floor-ceiling designs in the UL Fire Resistance Directory. Mark Spacing, number of luminaires not to exceed the ratio, one per 25sq ft of the total ceiling area, with minimum separation of 3ft between luminaires.

ELECTRICAL

Voltage: 120V

Socket: Medium base

Wattage: 90W max.

Lamp Type: Varies per trim

Dimming: Varier per lamp

Thermal Protection: Standard UL thermal protector rated for 110°C is affixed to inner top surface of housing.

TRIM COMPATIBILITY

NT-28	75W PAR30
NTM-300	75W PAR30
NTM-49	75W PAR30
NTM-52	75W PAR30
NTM-54	75W PAR30
NTM-57	90W PAR38
NTM-713	75W PAR30 / 90W PAR38
NTM-716	75W PAR30 / 90W PAR38
NTM-726	75W PAR30 / 90W PAR38
NTS-714	75W PAR30 / 90W PAR38

Junction Box: Prewired 0.03" thick galvanized steel, contains one 3/4" trade size knockout, one 3/8" trade size knockcut, three 1/2" trade size knockouts and four Romex pryouts with strain relief and snap on covers. All leads are #18AWG wire, the ground wire is connected to the bottom, and quick connectors are supplied on all leads. Maximum of 6 no. 12 AWG through branch circuit conductors suitable for at least 90°C permitted in junction box.

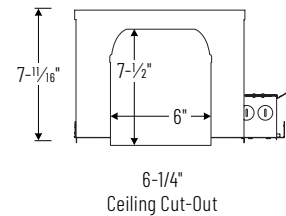
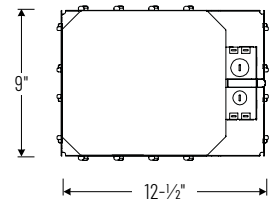
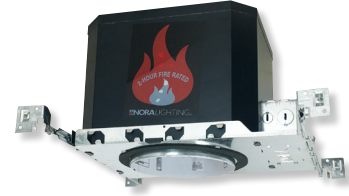
Quick Connect Feature: Housing contains three quick connections that allow insertion of 1/4" standard conductors to be inserted into the connector. Connectors are pre-attached to fixture power, common, and ground circuits.

LABELS AND LISTINGS

- cULus Classified for Two Hour Fire Rating
- cULus Listed for Wet Locations when used with compatible reflectors
- Meets or exceeds ASTM E283 Air-Tight requirements
- ANSI/UL 263
- ANSI/UL 1598



PRODUCT IMAGES & DIMENSIONS



6" Recessed Line Voltage Fire Rated Housing

Catalog No.

NFBIC-6INCATA = 6" Recessed Line Voltage Fire Rated Housing

Example: NFBIC-6INCATA = 6" Recessed Line Voltage Fire Rated Housing