

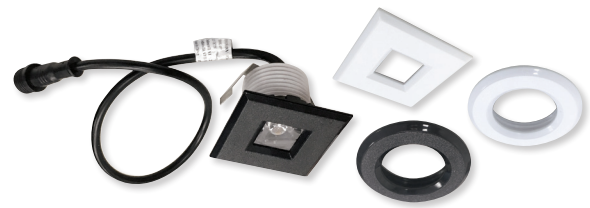
# M1 SERIES

## 1" Miniature LED Recessed

M1 miniature recessed series features quality and convenience with easy installation for indoor and outdoor applications. Luminaires include four plastic downlight trims, four optics and 6" quick connect. LED luminaires are available in 2700K or 3000K and require a 12VDC dimmable driver.

### FEATURES

- No housing required
- Easy installation for remodel or new construction applications
- Field changeable optics (frosted spot, narrow flood, flood and clear flood)
- Threaded LED module allows for field changeable trims
- Quick disconnect allows for extended lengths
- 100lm / 2W LED package
- 2700K or 3000K @ 90+ CRI
- Triac or ELV dimming
- 5-year limited warranty



**NM1-170**

1" M1 LED Miniature Recessed Series  
(includes two black and two white plastic trims)



**NM1-RSS**

1" Round Stainless Steel Trim



**NM1-SSS**

1" Square Stainless Steel Trim



**NM1-RSSD**

1" Round Stainless Steel Indicator Trim



**NM1-RAEYELID**

1" Round Scoop Trim



**NM1-RLOUV**

1" Round Louver Trim



**NM1-RAIHEC**

1" Round Hexcell Louver Trim

### M1 1" LED MINIATURE RECESSED

SERIES	COLOR TEMP / CRI	TRIMS / FINISHES
<b>NM1-170</b> 1" LED Module	<b>27X</b> 2700K / 90 CRI <b>30X</b> 3000K / 90 CRI	<b>2PBW</b> (2) Black & (2) White Plastic Trims

Ex: **NM1-17030X2PBW / NM1-DVR12**: 1" M1 LED Module and (4) Plastic Trims / 12VDC 12W Non-Dimmable Hardwire Driver

### M1 1" TRIMS

TRIM TYPE	FINISH
<b>NM1-RSS</b> 1" Round Stainless Steel Trim	<b>B</b> Black
<b>NM1-SSS</b> 1" Square Stainless Steel Trim	<b>BN</b> Brushed Nickel
<b>NM1-RAEYELID</b> 1" Round Scoop Trim	<b>W</b> White
<b>NM1-RLOUV</b> 1" Round Louver Trim	
<b>NM1-RAIHEC</b> 1" Round Hexcell Louver Trim	
<b>NM1-RSSD</b> 1" Round Stainless Steel Indicator Trim	

Ex: **NM1-RSSW**: 1" Round Stainless Steel Trim, White finish

### 12VDC LED DRIVERS

DESCRIPTION
<b>NM1-DVR12</b> 12VDC 12W Non-Dimmable Hardwire Driver
<b>NAPKED-5040HW</b> 12VDC 35W IC Dimmable Hardwire Driver
<b>NAPKED-5040HW</b> 12VDC 60W Dimmable Hardwire Driver
<b>NPSU-60W/12</b> 12VDC 60W Universal Dimming Hardwire Driver



# M1 1" Miniature LED Recessed Accessories



12VDC Non-Dimmable Hardwire Driver

**NM1-DVR12** 12W  
Input Voltage: 120V  
Output Voltage: 12V DC  
Maximum Load: 10W  
Dimming: Non-Dimmable  
Includes: Quick connect cable to NM1 module



12VDC Dimmable 5" Hardwire Driver

**NAPKED-5040HW** 35W (IC)  
Input Voltage: 120V  
Output Voltage: 12V DC  
Maximum Load: 28W  
Compartment Clearance: Minimum compartment size is 11-1/2" x 3-1/2" x 11-1/2"  
Dimming: Triac or ELV  
Requires: Splitter cable or wire harness system



12VDC Dimmable Hardwire Driver

**NAPKED-5060HW** 60W (Non-IC)  
Input Voltage: 120V  
Output Voltage: 12V DC  
Maximum Load: 48W  
Compartment Clearance: Minimum compartment size is 11-1/2" x 3-1/2" x 11-1/2"  
Dimming: Triac or ELV  
Requires: Splitter cable or wire harness system



Class II Universal Dimming Driver

**NPSU-60W/12** 60W (Non-IC)  
Input Voltage: 110-277V  
Output Voltage: 12V DC  
Maximum Load: 60W  
Compartment Clearance: Minimum compartment size is 5" on all sides  
Dimming: Triac, ELV, MLV, 0-10V, PWM  
Requires: Splitter cable or wire harness system



24" Hardwire Power Feed for 12V Driver

**NM1-HWPC/24**  
Use to connect (1) NM1 LED module to a 12V driver.  
Note: (1) Included with 12W Driver (NM1-DVR12), Splitter Cable (NM1-TM6) & Wire Harness (NM1-WH6)  
Length: 24"



Quick Connect Extension Linkable Cables

**NM1-EXT6** 6" Cable  
**NM1-EXT12** 12" Cable  
**NM1-EXT18** 18" Cable  
**NM1-EXT48** 48" Cable  
**NM1-EXT240** 240" Cable  
Use to extend the length between luminaire and driver / splitter / wire harness. Can be connected together to create custom lengths. Can be used as power feed for NAPKED LED drivers. Maximum length between luminaire and driver is 80'.



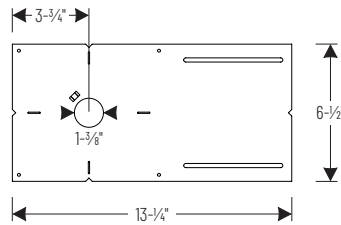
Splitter Cable (1 input - 6 output)

**NM1-TM6**  
Use to connect up to (6) NM1 LED modules to an LED driver. Maximum length between luminaire and driver is 80'. Includes power feed for NAPKED LED drivers.  
Input wire length: 4-3/4"  
Output wire lengths: 5-1/4" each



Wire Harness System

**NM1-WH6**  
Use to connect up to (6) NM1 LED modules to an LED driver on an evenly spaced wire. Each 6" dropped is spaced 32-1/2" on center. Maximum length between luminaire and driver is 80'. Includes power feed for NAPKED LED drivers.  
Spacing between luminaires: 32-1/2"  
Output wire length: 6" each



New Construction Frame-In

**NM1-F**  
For new construction pre-wiring and easier layout planning. Includes wire clip that holds low voltage connector close to cut-out during rough-in installations.