

E-SERIES FLIN

4" & 6" Canless LED Downlights Round or Square Aperture Selectable CCT

E-Series FLIN is a thin recessed LED designed for easy installation into new construction or remodel applications. Tunable white luminaires include an integral tunable CCT switch located on the junction box of each luminaire with a quick connect that allows for easy disconnect and mounting in the ceiling. The regressed lens with sharp baffle cuts reduce aperture brightness.

FEATURES

- No housing required and includes pre-wired junction box
- Quick disconnect allows for easy installation
- Junction box includes tunable color temperature switch
- Only 1-1/4" tall, ideal for shallow plenums
- IC Air-Tight rated
- Available in two sizes (4" & 6") and round or square
- Field Selectable CCT
- 120V or 120-277V input; Triac or ELV dimming
- cETLus Listed for Wet locations
- ENERGY STAR certified
- Can be used to comply with 2022 Title 24 Part 6 high efficacy requirements



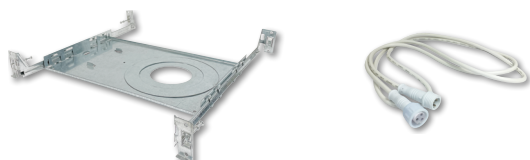
E-SERIES FLIN 4" & 6" LED DOWNLIGHTS W/ SELECTABLE CCT

SIZE / LUMENS / WATTAGE	COLOR TEMP	FINISH	INPUT VOLTAGE
NEFLINTW-R4 4" Round / 950lm	27K/30K/35K/40K/50K	MPW Matte Powder White	(blank) 120V LE4 120-277V
NEFLINTW-R6 6" Round / 1300lm			
NEFLINTW-S4 4" Square / 650lm			
NEFLINTW-S6 6" Square / 1150lm	233 27K / 30K / 35K		

Example: **NEFLINTW-R6MPW** = 6" Round E-Series FLIN, 1300lm / 13.5W, Selectable CCT (27K/30K/35K/40K/50K), Matte Powder White

FRAME-IN & EXTENSION CABLES

NF-R246	Universal New Construction Frame-In for 4" & 6" Round
NFP-S425	New Construction Plate for 4" Square
NFP-S625	New Construction Plate for 6" Square
NEFLINTW-EW-4	4' Quick Connect Extension Cable
NEFLINTW-EW-20	20' Quick Connect Extension Cable



E-SERIES FLIN DOWNLIGHTS WITH SELECTABLE CCT



4" E-Series FLIN Round Downlight

4" E-Series FLIN Square Downlight



6" E-Series FLIN Round Downlight

6" E-Series FLIN Square Downlight

NEFLINTW-R4MPW 27/30/35/40K/50K

Input Voltage: 120V or 120-277V
Lumens / Wattage: 950lm / 10.5W
Color Temperature: Built-In Switch
Finish: Matte Powder White
Dimming: Triac or ELV

NEFLINTW-S4MPW 27/30/35/40K/50K

Input Voltage: 120V or 120-277V
Lumens / Wattage: 655lm / 10.5W
Color Temperature: Built-In Switch
Finish: Matte Powder White
Dimming: Triac or ELV

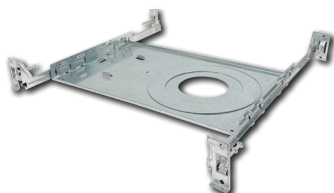
NEFLINTW-R6MPW 27/30/35/40K/50K

Input Voltage: 120V or 120-277V
Lumens / Wattage: 1300lm / 13.5W
Color Temperature: Built-In Switch
Finish: Matte Powder White
Dimming: Triac or ELV

NEFLINTW-S6233MPW 27K/30K/35K

Input Voltage: 120V or 120-277V
Lumens / Wattage: 1150lm / 13.5W
Color Temperature: Built-In Switch
Finish: Matte Powder White
Dimming: Triac or ELV

New Construction Frames



Universal New Construction Frame-In

NF-R246

for 4" & 6" Round



New Construction Plates

NFP-S425

for 4" Square

NFP-S625

for 6" Square

Photometrics

Part Number: NEFLINTW-R4MPW
Beam Spread: 115° Wide Flood
Lumens: 964lm
Wattage: 9.94W
Efficacy: 97lpw
CCT / CRI: 4000K / 90 CRI
Spacing Criteria (0°-180°): 1.28
Spacing Criteria (90°-270°): 1.28

Part Number: NEFLINTW-S4MPW
Beam Spread: 114° Wide Flood
Lumens: 658lm
Wattage: 10.2W
Efficacy: 64lpw
CCT / CRI: 4000K / 90 CRI
Spacing Criteria (0°-180°): 1.28
Spacing Criteria (90°-270°): 1.28

Part Number: NEFLINTW-R6MPW
Beam Spread: 115° Wide Flood
Lumens: 1323lm
Wattage: 13.82W
Efficacy: 96lpw
CCT / CRI: 4000K / 90 CRI
Spacing Criteria (0°-180°): 1.28
Spacing Criteria (90°-270°): 1.28

Part Number: NEFLINTW-S6345MPW
Beam Spread: 112° Wide Flood
Lumens: 1156lm
Wattage: 13W
Efficacy: 74lpw
CCT / CRI: 3000K / 90 CRI
Spacing Criteria (0°-180°): 1.26
Spacing Criteria (90°-270°): 1.26

Illuminance at a Distance		
Distance from Luminaire	FC at Nadir	Beam Diameter
4'	20.9fc	12"-10"
6'	9.3fc	19"-2"
8'	5.2fc	25"-8"
10'	3.4fc	32"-1"
12'	2.3fc	38"-6"

Illuminance at a Distance		
Distance from Luminaire	FC at Nadir	Beam Diameter
4'	14.2fc	12"-5"
6'	6.3fc	18"-8"
8'	3.6fc	24"-11"
10'	2.3fc	31"-1"
12'	1.6fc	37"-4"

Illuminance at a Distance		
Distance from Luminaire	FC at Nadir	Beam Diameter
4'	28.4fc	12"-6"
6'	12.6fc	18"-8"
8'	7.1fc	25"
10'	4.6fc	31"-2"
12'	3.2fc	37"-6"

Illuminance at a Distance		
Distance from Luminaire	FC at Nadir	Beam Diameter
4'	25.5fc	11"-11"
6'	11.3fc	17"-11"
8'	6.4fc	23"-11"
10'	4.1fc	29"-10"
12'	2.8fc	35"-10"