

NQZ-8R-F

New Construction Frame-In with Collar for 8" Can-less Downlights

Type

Project

Catalog No.

Notes

PRODUCT DESCRIPTION

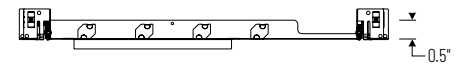
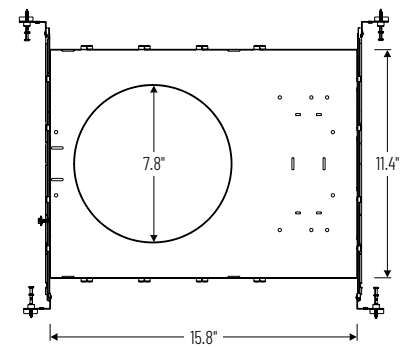
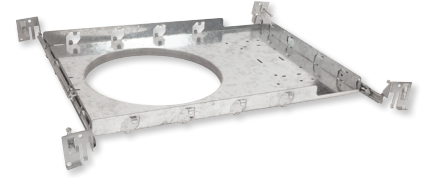
New construction frame-in with collar can be used to assist installing can-less downlights.

Mounting: Bar hangers are adjustable from 13-3/4" to 26" with integral nails. Bar hangers are slotted for T-bar ceiling grids.

COMPATIBLE LUMINAIRE

[NQZ2-81TWTW-MPW](#): 8" Quartz LED Downlight

PRODUCT IMAGES AND DIMENSIONS



New Construction Frame-In

Description

NQZ-8R-F = New Construction Frame-In with Collar

Compatible Luminaire

Description

NQZ2-81TWTW-MPW = 8" Quartz LED Downlight

Example: **NQZ-8R-F** = New Construction Frame-In with Collar