

NHIOICD-415 / NHIOICD-420 / NHIOICD-425

4" Iolite IC Air-Tight High Lumen New Construction Housing

Source: 20W to 28W LED
1500lm to 2500lm

Type	
Project	
Catalog No.	
Notes	

PRODUCT DESCRIPTION

New construction housing for use in insulated ceilings can be in direct contact with insulation**. Air-tight construction provides energy savings by reducing the flow of air through the ceiling. Patented design allows for easy, tool-less removal of the driver.

FEATURES

- IC rated for direct contact with insulation**
- Quick connect provided for electrical connection to the LED reflector
- ASTM E283 for Air-Tight
- Patented driver assembly

SPECIFICATION

Housing: 0.040" Aluminum housing with patented driver assembly, allows for driver to slide out without tools. Housing can be installed in 1/2" ceiling thickness, an extension collar is available for ceiling thickness up to 2", must specify NIO-4EXTC2. Driver is accessible above ceiling.

Air Flow Restriction: Meets requirements of Air-Tight (AT) <2CFM (cubic feet per minute) in accordance with ASTM-283 Air-Tight requirements.

Clearance:** "IC" Insulated ceiling housings are direct contact rated. Not to be used in direct contact with spray foam insulation.

Bar Hangers: Two 13-3/4" to 24-1/2" adjustable bar hangers with captive nails are included on housing. Bar hanger brackets are parallel to junction box, but can be repositioned 90° perpendicular to junction box if desired. "L"-shaped bar hanger foot to align to bottom of construction joist. A T-bar notch allows for easy installation in a suspended ceiling.

Junction Box: Pre-wired 25 cubic inch 0.064" thick galvanized steel, with seven 1/2" knockouts, four Romex® pryouts, and snap on covers. All leads are #18AWG wire, the ground wire is connected to the bottom, and quick connectors are supplied on all leads. Through branch circuit wiring, (4-in, 4-out). Access above ceiling required.

ELECTRICAL

Voltage: 120/277V

Power Factor: >0.90

Operating Temp.:

NHIOICD-415: 104°F (40°C) max. ambient temperature

NHIOICD-420: 86°F (30°C) max. ambient temperature

NHIOICD-425: 77°F (25°C) max. ambient temperature

Wattage: 20W, 24W to 28W (must specify)

Dimming: Triac, ELV, 0-10V or EcoSystem (must specify)

[Click Here](#) or check complete dimmer list at www.NoraLighting.com in the "Compatibility" page under "Resources" tab

COMPATIBLE REFLECTORS

CATALOG NO.	DESCRIPTION
NIO-4RC	4" Round Cone Regress
NIO-4SC	4" Square Cone Regress
NIO-4RG	4" Round Adj. Surface Gimbal
NIO-4SG	4" Square Adj. Surface Gimbal
NIO-4RD	4" Round Adj. Deep Regress
NIO-4SD	4" Square Adj. Deep Regress
NIO-4RND	4" Round Deep Reflector
NIO-4SND	4" Square Deep Reflector
NIO-4RPH	4" Round Pinhole
NIO-4SND	4" Square Reflector / Square Aperture
NIO-4RSL	4" Round Adj. Slot Aperture
NIO-4RNB	4" Round Bullnose
NIO-4SNB	4" Square Bullnose
NIO-4SDS	4" Square Adjustable / Square Aperture
NIO-4SW	4" Square Wall Wash (1500 & 2000lm only)
NIO-4RTLA	4" Round Trimless Adj. Reflector
NIO-4RTLND	4" Round Trimless Reflector

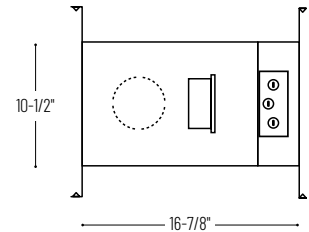
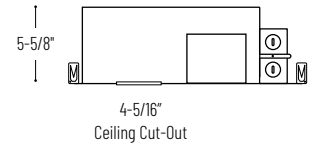
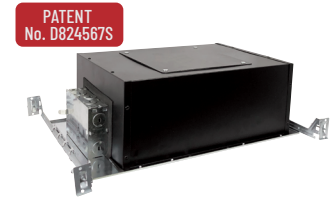
Emergency: Housing can be specified with connections for emergency battery installation. Requires top access. Must specify battery with remote test switch separately, NEPK-BSL17C-C2U.

LABELS AND LISTINGS

- cULus Listed for Damp Location (Wet Location when used with compatible reflector)
- [5-Year Limited Warranty](#)
- RoHS Compliant
- FCC compliant
- Patent #D824567S
- Meets or exceeds ASTM-283 Air-Tight requirements



PRODUCT IMAGES AND DIMENSIONS



4" Iolite ICAT High Lumen New Construction Housing - Compatible with NIO-4 reflectors

Housing Type	Driver / Dimming	Optional Emergency
NHIOICD-415 = 1500lm / 20W	LE4 = 120/277V input; Triac / ELV / 0-10V dimming LUPE0 = 120/277V input; Lutron Hi-lume Premier 0.1% EcoSystem with Soft-On, Fade-to-Black LUPE01 = 120/277V input; Lutron Hi-lume 1% EcoSystem with Soft-On, Fade-to-Black	/PEM = Pre-Wired for Remote Emergency
NHIOICD-420 = 2000lm / 24W NHIOICD-425 = 2500lm / 28W	LE4 = 120/277V input; Triac / ELV / 0-10V dimming	/PEM = Pre-Wired for Remote Emergency

Optional Accessories

Description
NEPK-BSL17C-C2U = Remote Emergency Battery w/Test Switch NIO-4EXTC2 = Ceiling Extension Collar up to 2"

Example: NHIOICD-420LE4 = 4" Iolite ICAT High Lumen New Construction Housing, 2000lm / 24W, 120-277V input; Triac / ELV / 0-10V dimming