

# COBALT SHALLOW

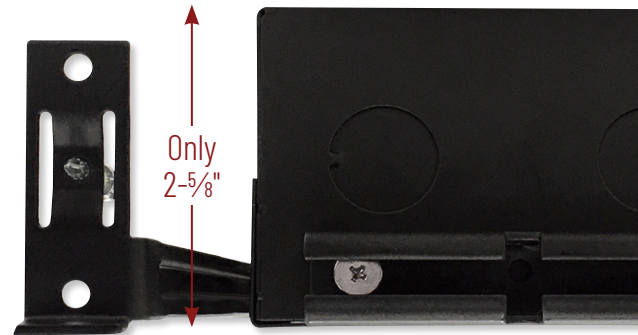
4" Dedicated Shallow Housing  
Delivering over 1250 lumens!

IC Air-Tight Housing measures only 2-5/8" in height for shallow ceiling plenums. Patented design allows end users to easily access driver from below the ceiling. Ceiling collar adjust to ceiling thickness from 3/8" to 1-1/2". 4" Square and round reflectors deliver over 1250 lumens in a variety of finishes and color temperatures.



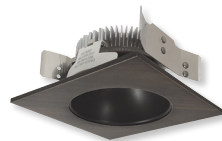
Patented driver compartment

Compartment easily slides to allow access from below the ceiling



## FEATURES

- IC Air-Tight New Construction Housing
- Square or Round Reflectors
- Cree® COB LED technology delivering 850 or 1250 lumens
- 2700K, 3000K, 3500K or 4000K @ 90+ CRI
- Ten reflector finishes
- Triac, ELV or 0-10V dimming
- cULus Listed for Wet Locations
- ENERGY STAR® certified
- 5-Year Limited Warranty
- Certified to the high efficacy requirements of California Title 24 JA8-2019



**NLCBS-453**  
Square Reflector  
Round Aperture



**NLCBS-4W51**  
Round Reflector



**NLCBS-456**  
Square Reflector  
Square Aperture



**NLCBS-4W52**  
Round Baffle



### 4" COBALT SHALLOW IC AIR-TIGHT HOUSING

DESCRIPTION

**NHSIC-485LE3LT** 850lm / 13.5W, 120V input; Triac / ELV dimming

**NHSIC-412LE4LT** 1250lm / 16.5W, 120-277V input; Triac / ELV / 0-10V dimming

Example: **NHSIC-412LE4LT** - 4" Shallow IC Air-Tight, 1250lm / 16.5W, 120-277V input

### 4" COBALT SHALLOW REFLECTORS

REFLECTOR TYPE	LM / W	CCT	FINISH
<b>NLCBS-4W51</b> Round Reflector	<b>85</b> 850lm / 13.5W	<b>27</b> 2700K	<b>BB</b> Black/Black
<b>NLCBS-4W52</b> Round Baffle	<b>12</b> 1250lm / 16.5W	<b>30</b> 3000K	<b>BW</b> Black/White
<b>NLCBS-453</b> Square Reflector w/Round Aperture		<b>35</b> 3500K	<b>BZ</b> Bronze/Bronze
<b>NLCBS-456</b> Square Reflector w/Square Aperture		<b>40</b> 4000K	<b>DW</b> Diffused/White
			<b>DMPW</b> Diffused/MPW
			<b>HMPW</b> Haze/MPW
			<b>HZW</b> Haze/White
			<b>MPW</b> Matte Powder White
			<b>NN</b> Natural Metal
			<b>PW</b> Pewter/White
			<b>WW</b> White/White

Example: **NLCBS-4W51I230MPW** - 4" Round Reflector, 1250lm / 16.5W, 3000K, MPW

