

NM2-2R270

2" M2 Round LED Recessed Elbow

Source: 6W LED
500lm

PRODUCT DESCRIPTION

M2 downlight series features quality and convenience with easy installation for insulated or non-insulated applications. Luminaire can be configured into square trim with an accessory and produces over 500 lumens.

FEATURES

- Field changeable optics (spot and narrow flood included)
- No housing required - IC Air-Tight rated
- Easy installation for remodel or new construction applications
- Square trim available for an alternative appearance
- Quick disconnect allows for extended lengths
- 2700K or 3000K @ 90+ CRI
- Triac or ELV dimming
- 5-year limited warranty
- cETLus Listed for Damp Locations

SPECIFICATION

Construction: Die-cast aluminum trims available in matte black or matte powder white finish. Rotates 345° horizontally and extends up to 70°.

Field Changeable Optics: Each luminaire includes a spot (installed) and narrow flood optic. Optics can easily be replaced in the field.

Air Flow Restriction: Luminaire has factory installed gasket to restrict airflow from room into ceiling plenum to <2CFM (cubic feet per minute) in accordance with ASTM-283 Air-Tight requirements.

Clearance: IC rated luminaires are rated for direct contact with insulation (not spray foam insulation), no minimum clearance is required.

Junction Box: Prewired junction box includes quick connect to LED fixtures for ease of installation. Junction box includes two 1/2" trade size knockouts and snap on cover with 7" connector length. Luminaire includes 6" quick connect wire.

Maximum length between luminaire and driver is 40'. For longer remote driver remote run length, consult factory.

Mounting: No housing is required, two tensions steel spring clips secure luminaire to ceiling. Accommodates ceiling thickness up to 3/4". New construction frame-in kits are available, see accessories.

ELECTRICAL

Input Voltage: 120V
Lumens / Wattage: 500lm / 6W
Color Temperature: 2700K or 3000K
Color Rendering Index: 90+ CRI
Beam Spread: 33° Spot and 48° Narrow Flood
Operating Temp.: 0°C to 40°C ambient temperature
Lifetime: 33,000 hours @ L70
Dimming: Dimmable down to 10% with Triac or ELV
[Click Here](#) or check complete dimmer list at www.NoraLighting.com in the "Compatibility" page under "Resources" tab

OPTIONAL TRIM ACCESSORY

NM2-2SET: Square Trim for NM2-2R270, Black or White

OPTIONAL MOUNTING ACCESSORIES

NM2-MLS1: One Head Multiple Lighting System Plate
NM2-MLS2: Two Head Multiple Lighting System Plate
NM2-MLS3: Three Head Multiple Lighting System Plate
NF-R246: Universal New Construction Frame-In
NFC-R275: New Construction Frame-In with Collar
NM2-EW-4: 4' Quick Connect Linkable Extension Cable
NM2-EW-10: 10' Quick Connect Linkable Extension Cable

LABELS AND LISTINGS

- cETLus Listed for Damp Locations
- [5-Year Limited Warranty](#)
- FCC compliant
- Certified to the high efficacy requirements of California Title 24 JA8-2022



Type

Project

Catalog No.

Notes

PRODUCT IMAGES AND DIMENSIONS



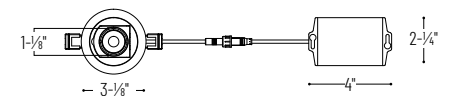
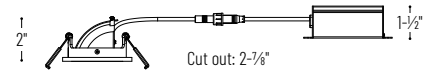
NM2-2R270
Matte Powder White

NM2-2R270 + NM2-2SET
Matte Powder White



NM2-2R270
Matte Black

NM2-2R270 + NM2-2SET
Matte Black



NM2-2SET
Square Trim

2" M2 Round LED Recessed Elbow

Trim Type	Lumens / Wattage	Color Temperature	Finish
NM2-2R270 = 2" Round Elbow	50 = 500lm / 6W	27 = 2700K	BB = Matte Black
		30 = 3000K	MPW = Matte Powder White

M2 Trim Accessory

Accessory Type	Finish
NM2-2SET = Square Trim for NM2-2R270	B = Matte Black MPW = Matte Powder White

Optional Mounting Accessories

Accessory Type	Finish
NM2-MLS1 = One Head MLS Plate	BB = Matte Black
NM2-MLS2 = Two Head MLS Plate	MPW = Matte Powder White
NM2-MLS3 = Three Head MLS Plate	
NF-R246 = Universal New Construction Frame-In	
NFC-R275 = New Construction Frame-In with Collar	
NM2-EW-4 = 4' Quick Connect Extension Cable	
NM2-EW-10 = 10' Quick Connect Extension Cable	

Example: **NM2-2R2705030MPW** = 2" M2 Round LED Recessed Elbow, 500lm / 6W, 3000K, Matte Powder White

NM2-2R270

2" M2 Round LED Recessed Elbow Accessories

Type	
Project	
Catalog No.	
Notes	



Square Trim for NM2-2R270

NM2-2SETB Matte Black
NM2-2SETMPW Matte Powder White
 Converts the round trim included with NM2-2R270 elbow into a square trim



One Head Multiple Lighting System Plate

NM2-MLS1B 1 Head / Matte Black
NM2-MLS1MPW 1 Head / Matte Powder White
 Converts one round LED luminaire into multiple lighting system without a large housing.



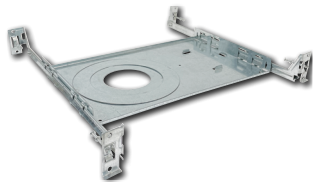
Two Head Multiple Lighting System Plate

NM2-MLS2B 2 Head / Matte Black
NM2-MLS2MPW 2 Head / Matte Powder White
 Converts two round LED luminaires into multiple lighting system without a large housing.



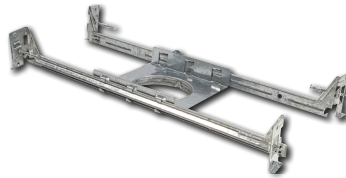
Three Head Multiple Lighting System Plate

NM2-MLS3B 3 Head / Matte Black
NM2-MLS3MPW 3 Head / Matte Powder White
 Converts three round LED luminaires into multiple lighting system without a large housing.



Universal New Construction Frame-In

NF-R246
 Universal new construction frame-in can be used to assist installing can-less recessed downlighting.



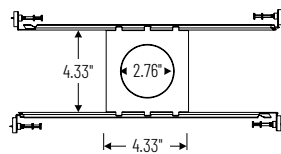
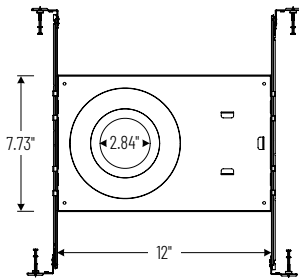
New Construction Frame-In with Collar

NFC-R275
 New construction frame-in can be used to assist installing can-less recessed downlighting.



Quick Connect Extension Linkable Cables

NM2-EW-4 4' Cable
NM2-EW-10 10' Cable
 Use to extend the length between luminaire and driver enclosure. Can be connected together to create custom lengths. Maximum length between luminaire and driver is 40'. For longer remote driver remote run length, consult factory.



PHOTOMETRICS

2" M2 Round LED Recessed Elbow

Type

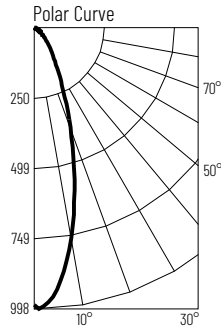
Project

Catalog No.

Notes

Test Information

Test Number: NTR1571
 Part Number: NM2-2R2705027MPW
 Beam Spread: 33° Spot
 Lumens: 513lm
 Wattage: 5.68W
 Efficacy: 90lpw
 CCT / CRI: 2700K / 90 CRI
 Spacing Criteria (0°-180°): 0.56
 Spacing Criteria (90°-270°): 0.56



Illuminance at a Distance

Distance from Luminaire	FC at Nadir	Beam Diameter
2'	246fc	1'-2"
4'	61.6fc	2'-5"
6'	27.4fc	3'-7"
8'	15.4fc	4'-10"
10'	9.9fc	6'

Zonal Lumen Summary

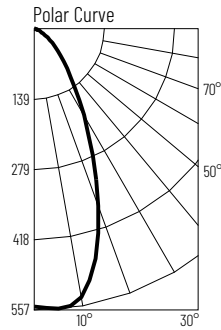
Zone	Lumens	% Luminaire
0-30	347	67.6
0-40	417	81.2
0-60	489	95.3
0-90	513	99.9
90-180	1	0.1
0-180	513	100

Candela Table

Vertical Angles	Candela
0	985
5	913
15	552
25	240
35	105
45	56

Test Information

Test Number: NTR1570
 Part Number: NM2-2R2705027MPW
 Beam Spread: 48° Narrow Flood
 Lumens: 514lm
 Wattage: 5.66W
 Efficacy: 91lpw
 CCT / CRI: 2700K / 90 CRI
 Spacing Criteria (0°-180°): 0.78
 Spacing Criteria (90°-270°): 0.8



Illuminance at a Distance

Distance from Luminaire	FC at Nadir	Beam Diameter
2'	138fc	1'-10"
4'	34.4fc	3'-6"
6'	15.3fc	5'-4"
8'	8.6fc	7'-1"
10'	5.5fc	8'-11"

Zonal Lumen Summary

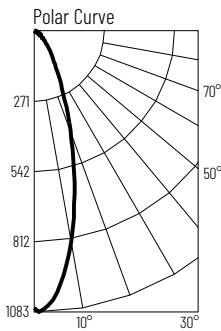
Zone	Lumens	% Luminaire
0-30	304	59.2
0-40	393	76.4
0-60	487	94.6
0-90	514	99.9
90-180	1	0.1
0-180	514	100

Candela Table

Vertical Angles	Candela
0	551
5	549
15	455
25	266
35	138
45	74

Test Information

Test Number: NTR1573
 Part Number: NM2-2R2705027MPW
 Beam Spread: 33° Spot
 Lumens: 565lm
 Wattage: 5.66W
 Efficacy: 100lpw
 CCT / CRI: 3000K / 90 CRI
 Spacing Criteria (0°-180°): 0.56
 Spacing Criteria (90°-270°): 0.56



Illuminance at a Distance

Distance from Luminaire	FC at Nadir	Beam Diameter
2'	271fc	1'-2"
4'	67.7fc	2'-5"
6'	30.1fc	3'-7"
8'	16.9fc	4'-10"
10'	10.8fc	6'

Zonal Lumen Summary

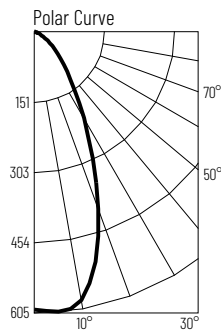
Zone	Lumens	% Luminaire
0-30	387	68.5
0-40	454	80.4
0-60	537	95.1
0-90	564	99.9
90-180	1	0.1
0-180	565	100

Candela Table

Vertical Angles	Candela
0	1083
5	1006
15	612
25	274
35	114
45	59

Test Information

Test Number: NTR1572
 Part Number: NM2-2R2705027MPW
 Beam Spread: 49° Narrow Flood
 Lumens: 561lm
 Wattage: 5.66W
 Efficacy: 99lpw
 CCT / CRI: 3000K / 90 CRI
 Spacing Criteria (0°-180°): 0.78
 Spacing Criteria (90°-270°): 0.8



Illuminance at a Distance

Distance from Luminaire	FC at Nadir	Beam Diameter
2'	149fc	1'-10"
4'	37.3fc	3'-7"
6'	16.6fc	5'-5"
8'	9.3fc	7'-2"
10'	6fc	9'-1"

Zonal Lumen Summary

Zone	Lumens	% Luminaire
0-30	332	59.2
0-40	429	76.4
0-60	530	94.6
0-90	560	99.9
90-180	1	0.1
0-180	561	100

Candela Table

Vertical Angles	Candela
0	598
5	601
15	500
25	291
35	150
45	81