

## NM2-2RDCS

### 2" M2 Round LED Recessed Lensed Downlight

Source: 6W, 8W or 10W LED

400lm, 600lm or 850lm

#### PRODUCT DESCRIPTION

M2 downlight series features quality and convenience with easy installation for insulated or non-insulated applications.

#### FEATURES

- No housing required - IC Air-Tight rated
- Easy installation for remodel or new construction applications
- Quick disconnect allows for extended lengths
- 400lm, 600lm or 850lm LED packages
- 2700K, 3000K or 4000K @ 90+ CRI
- Triac or ELV dimming
- 5-year limited warranty
- cETLus Listed for Wet Locations

#### SPECIFICATION

**Construction:** Die-cast aluminum trims available in matte black or matte powder white finish. Frosted lens included with matching reflector finish as trim.

**Air Flow Restriction:** Luminaire has factory installed gasket to restrict airflow from room into ceiling plenum to <2CFM (cubic feet per minute) in accordance with ASTM-283 Air-Tight requirements.

**Clearance:** IC rated luminaires are rated for direct contact with insulation (not spray foam insulation), no minimum clearance is required.

**Junction Box:** Prewired junction box includes quick connect to LED fixtures for ease of installation. Junction box includes two (400lm/600lm) or four (850lm) ½" trade size knockouts and snap on cover with 7" quick connect wire. Luminaire includes 5" (400lm/600lm) or 4" (850lm) quick connect wire.

**Maximum length between luminaire and driver is 40'. For longer remote driver remote run length, consult factory.**

**Mounting:** No housing is required, two tensions steel spring clips secure luminaire to ceiling. Accommodates ceiling thickness up to ¾". New construction frame-in kits are available, see accessories.

ELECTRICAL	40	60	85
Input Voltage	120V		
Input Power	6W	8W	10W
Color Temperature	2700K or 3000K	2700K, 3000K, 4000K	
CRI	90+ CRI		
<u>Dimming</u>	Triac / ELV		
Operating Temp.	40°C max.		25°C max.
Beam Spread	36° Flood		
Lifetime	60,000 hours @ L70		

#### OPTIONAL MOUNTING ACCESSORIES

**NM2-MLS1:** One Head Multiple Lighting System Plate  
**NM2-MLS2:** Two Head Multiple Lighting System Plate  
**NM2-MLS3:** Three Head Multiple Lighting System Plate  
**NF-R246:** Universal New Construction Frame-In  
**NFC-R275:** New Construction Frame-In with Collar  
**NM2-EW-4:** 4' Quick Connect Linkable Extension Cable  
**NM2-EW-10:** 10' Quick Connect Linkable Extension Cable  
**NEPK-23LEDUNV:** 23W Emergency with Remote Test Switch  
**NEPKA-20/23LEDRTS:** Ribbon Test Switch for NEPK-23LEDUNV

**Emergency:** Luminaire is compatible with NEPK-23LEDUNV (ordered separately). Remote mounted battery operates luminaire for 90 minute emergency operation with a fully charged battery. Emergency includes remote test switch, ribbon test switch accessory (NEPKA-20/23LEDRTS) ordered separately.

#### LABELS AND LISTINGS

- cETLus Listed for Wet Locations
- [5-Year Limited Warranty](#)
- FCC compliant
- Certified to the high efficacy requirements of California Title 24 JA8-2022



Type

Project

Catalog No.

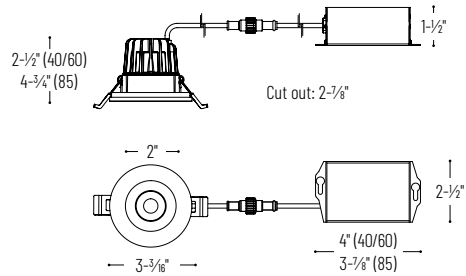
Notes

#### PRODUCT IMAGES AND DIMENSIONS



**NM2-2RDCSXXXBB**  
400lm or 600lm  
Matte Black

**NM2-2RDCS85XXMPW**  
850lm  
Matte Powder White



## 2" M2 Round LED Recessed Lensed Downlight

Lumens / Wattage	Color Temperature	Finish
<b>NM2-2RDCS40</b> = 400lm / 6W	<b>27</b> = 2700K <b>30</b> = 3000K	<b>BB</b> = Matte Black <b>MPW</b> = Matte Powder White
<b>NM2-2RDCS60</b> = 600lm / 8W <b>NM2-2RDCS85</b> <sup>1</sup> = 850lm / 10W	<b>27</b> = 2700K <b>30</b> = 3000K <b>40</b> = 4000K	<b>BB</b> = Matte Black <b>MPW</b> = Matte Powder White

#### Note:

<sup>1</sup> 4000K only available in Matte Black

## Optional Mounting Accessories

Accessory Type	Finish
<b>NM2-MLS1</b> = One Head MLS Plate <b>NM2-MLS2</b> = Two Head MLS Plate <b>NM2-MLS3</b> = Three Head MLS Plate	<b>BB</b> = Matte Black <b>MPW</b> = Matte Powder White
<b>NF-R246</b> = Universal New Construction Frame-In <b>NFC-R275</b> = New Construction Frame-In with Collar <b>NM2-EW-4</b> = 4' Quick Connect Extension Cable <b>NM2-EW-10</b> = 10' Quick Connect Extension Cable <b>NEPK-23LEDUNV</b> = 23W Emergency LED Driver w/ Remote Test Switch <b>NEPKA-20/23LEDRTS</b> = Ribbon Test Switch for NEPK-23LEDUNV	

Example: **NM2-2RDCS6030MPW** = 2" M2 Round LED Recessed Lensed Downlight, 600lm / 8W, 3000K, Matte Powder White

## NM2-2RDCS

### 2" M2 Round LED Recessed Lensed Downlight Accessories

Type

Project

Catalog No.

Notes



One Head Multiple Lighting System Plate

**NM2-MLS1B** 1 Head / Matte Black  
**NM2-MLS1PW** 1 Head / Matte Powder White  
 Converts one round LED luminaire into multiple lighting system without a large housing.



Two Head Multiple Lighting System Plate

**NM2-MLS2B** 2 Head / Matte Black  
**NM2-MLS2MPW** 2 Head / Matte Powder White  
 Converts two round LED luminaires into multiple lighting system without a large housing.



Three Head Multiple Lighting System Plate

**NM2-MLS3B** 3 Head / Matte Black  
**NM2-MLS3MPW** 3 Head / Matte Powder White  
 Converts three round LED luminaires into multiple lighting system without a large housing.



Universal New Construction Frame-In

**NF-R246**  
 Universal new construction frame-in can be used to assist installing can-less recessed downlighting.



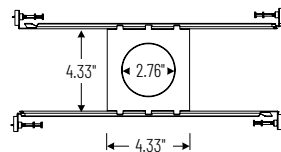
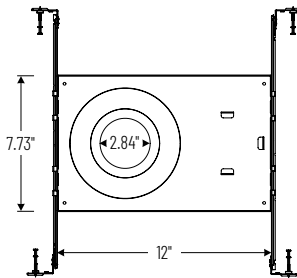
New Construction Frame-In with Collar

**NFC-R275**  
 New construction frame-in can be used to assist installing can-less recessed downlighting.



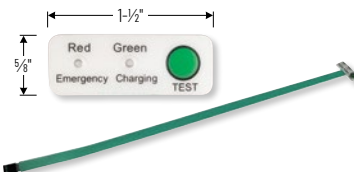
Quick Connect Extension Linkable Cables

**NM2-EW-4** 4' Cable  
**NM2-EW-10** 10' Cable  
 Use to extend the length between luminaire and driver enclosure. Can be connected together to create custom lengths. Maximum length between luminaire and driver is 40'. For longer remote driver remote run length, consult factory.



23W Emergency LED Driver with Remote Test Switch

**NEPK-23LEDUNV**  
 120-277V Emergency battery operates luminaire for 90 minute emergency operation with a fully charged battery. Requires 24 hours to charge the battery.



Ribbon Test Switch for NEPK-23LEDUNV

**NEPKA-20/23LEDRTS**  
 Ribbon test switch replaces remote test switch included with emergency driver. Double sided tape is pre-installed.

PHOTOMETRICS

2" M2 Round LED Recessed Lensed Downlight

Type

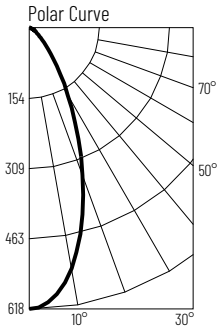
Project

Catalog No.

Notes

Test Information

Test Number: NTR1506  
Part Number: NM2-2RDCS4030MPW  
Beam Spread: 44° Flood  
Lumens: 450lm  
Wattage: 7.08W  
Efficacy: 63lpw  
CCT / CRI: 3000K / 90 CRI  
Spacing Criteria (0°-180°): 0.7  
Spacing Criteria (90°-270°): 0.7



Illuminance at a Distance

Distance from Luminaire	FC at Nadir	Beam Diameter
2'	154fc	1'-7"
4'	38.6fc	3'-2"
6'	17.2fc	4'-10"
8'	9.7fc	6'-5"
10'	6.2fc	8'

Zonal Lumen Summary

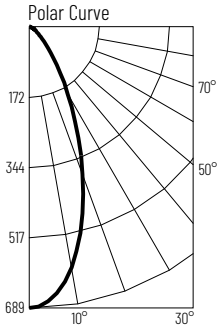
Zone	Lumens	% Luminaire
0-30	293	65.1
0-40	366	81.3
0-60	427	95
0-90	449	99.9
90-180	0	0.1
0-180	450	100

Candela Table

Vertical Angles	Candela
0	618
5	596
15	446
25	249
35	114
45	50

Test Information

Test Number: NTR1505  
Part Number: NM2-2RDCS6030MPW  
Beam Spread: 44° Flood  
Lumens: 505lm  
Wattage: 8.1W  
Efficacy: 62lpw  
CCT / CRI: 3000K / 90 CRI  
Spacing Criteria (0°-180°): 0.7  
Spacing Criteria (90°-270°): 0.7



Illuminance at a Distance

Distance from Luminaire	FC at Nadir	Beam Diameter
2'	172fc	1'-7"
4'	43.1fc	3'-2"
6'	19.1fc	4'-10"
8'	10.8fc	6'-5"
10'	6.9fc	8'

Zonal Lumen Summary

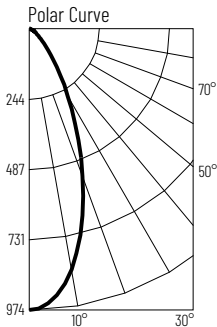
Zone	Lumens	% Luminaire
0-30	328	65
0-40	410	81.2
0-60	479	95
0-90	504	99.9
90-180	0	0.1
0-180	505	100

Candela Table

Vertical Angles	Candela
0	689
5	666
15	501
25	280
35	129
45	57

Test Information

Test Number: NTR1504  
Part Number: NM2-2RDCS8530MPW  
Beam Spread: 44° Flood  
Lumens: 725lm  
Wattage: 10W  
Efficacy: 72lpw  
CCT / CRI: 3000K / 90 CRI  
Spacing Criteria (0°-180°): 0.7  
Spacing Criteria (90°-270°): 0.7



Illuminance at a Distance

Distance from Luminaire	FC at Nadir	Beam Diameter
2'	244fc	1'-7"
4'	60.9fc	3'-2"
6'	27.1fc	4'-10"
8'	15.2fc	6'-5"
10'	9.7fc	8'-1"

Zonal Lumen Summary

Zone	Lumens	% Luminaire
0-30	466	64.3
0-40	583	80.5
0-60	686	94.7
0-90	724	99.9
90-180	1	0.1
0-180	725	100

Candela Table

Vertical Angles	Candela
0	974
5	945
15	710
25	396
35	184
45	84