

The logo for NORA LIGHTING. The word "NORA" is in a large, red, sans-serif font, with a registered trademark symbol (®) to its upper right. Below "NORA", the word "LIGHTING" is written in a smaller, red, sans-serif font, with wide letter spacing.

NORA[®] LIGHTING

LED RECESSED PRODUCT OVERVIEW



Large enough to do it right, small enough to care.

Since our founding in 1989, Nora Lighting has grown from a small importer of lighting fixtures to a designer and manufacturer of quality LED and non-LED residential and commercial lighting. Our long-time customers and reps are familiar with our humble beginnings as a company and for those of you who are newer to Nora, this story is at the core of how we make choices and how we operate and thrive as a business.

Jilla and I fled Iran in 1987 as refugees and started Nora Lighting two years later in a 1,000 ft² office with only 4 SKU's. With no lighting background or business network in the US, we earned our customers' trust through honest business practices, exceptional service, and quality products. Our same core values of "Service, Quality, and Value" are still very much true today. Through tireless hard work with our amazing Nora team, we were able to expand our product offering, engineering capabilities, warehousing, and sales network to what it is today. We proudly boast a portfolio of over 40,000 SKUs and have our products stocked in over 300,000 ft² of warehouse space across the country.

In 2013, our daughter Neda joined our business to lead it into the second generation. We have supported this next generation of our business with large investments in company infrastructure, inventory, warehousing, and personnel. Our 100% cloud-based ERP system allows us and you to access real-time information from anywhere at any time and has increased our inventory accuracy to over 98% month-over-month. Our newly renovated R&D center is equipped with the latest technology and a UL certified lab. Our product offering, with its quality and pricing is unparalleled in our industry. Our warehouses are filled wall-to-wall with inventory and in 2022 alone, we added two new distribution centers and added two new sales territories to allow us to better serve our customers and reps.

We look forward to welcoming you to our new state-of-the-art showroom and training facility in Los Angeles starting in 2023. To know us is to understand our slogan of "large enough to do it right, small enough to care." We are a proud family-owned and operated business. Doing business with Nora means you come first because family always comes first.

Thank you for trusting us and supporting us over the last 30+ years. We are confident that we have positioned ourselves for another very successful 30+ years.

A handwritten signature in black ink, appearing to read "Fred Farzan".

Fred Farzan
President

DEDICATED HOUSING

SAPPHIRE II

Architectural and Commercial Downlights

Apertures: 4", 6" and 8"
Lumens: 900lm to 8000lm
CCT: 2700K, 3000K, 3500K, 4000K

Sapphire II architectural / commercial grade luminaires feature COB LED technology with specifiable beam spreads. Deep cone open reflectors, adjustable, wall wash or decorative glasses reflectors. Frame-in options include universal architectural/commercial, remodel or retrofit existing frame-ins.



MARQUISE II

Light Commercial & High-End Residential

Apertures: 4", 5" and 6"
Lumens: 900lm to 2500lm
CCT: 2700K, 3000K, 3500K, 4000K

Commercial and high-end residential ICAT series that utilizes the same COB LED technology as the Sapphire II Series. Variety of adjustable reflectors, square, slope and baffles. Housings include new construction, remodel, slope or retrofit existing housings.

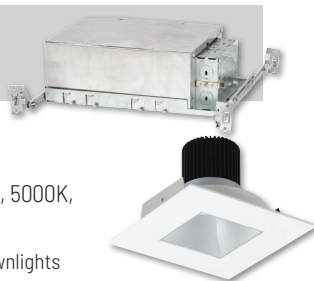


IOLITE

Specification Grade Downlights

Apertures: 1", 2" and 4"
Lumens: 600lm to 2500lm
CCT: 2700K, 3000K, 3500K, 4000K, 5000K,
Comfort Dim (warm dim)

Small aperture specification grade downlights feature COB LED technology with field adjustable beam spreads or 10° optic in a variety of square and round trims. 2" and 4" apertures are also available in trimless, for a clean knife edge look.



COBALT HIGH LUMEN

Light Commercial and High-End Residential

Aperture: 6"
Lumens: 1500lm or 2000lm
CCT: 2700K, 3000K, 3500K, 4000K

Cobalt high lumen LED downlights utilize the same trims as our Click series for higher ceiling applications. High lumen downlights require a dedicated housing available in new construction or remodel, for IC or Non-IC applications.



COBALT SHALLOW

Commercial and Residential

Aperture: 4"
Lumens: 850lm or 1250lm
CCT: 2700K, 3000K, 3500K, 4000K

At only 2-5/8" height, Cobalt shallow housing is a perfect solution for shallow plenums and wet locations. The housing features a patented driver compartment for easy maintenance and access to driver from below the ceiling. A variety of round and square trims are available.



RETROFIT

ONYX RETROFIT

Dedicated or Selectable CCT • Adjustable or Fixed Trims

Apertures: 4", 5" and 6"
Lumens: 700lm to 1150lm
CCT: 2700K, 3000K, 3500K, 4000K, 5000K

Onyx LED retrofits are available in dedicated or selectable CCT. Trim styles include adjustable, baffle, square, wall wash and reflectors that are compatible with most IC and Non-IC housings. Selectable CCT fixtures include a 5 CCT switch located on the back of each luminaire.



COBALT RETROFIT

Dedicated CCT • Adjustable or Fixed Trims • EM option

Apertures: 4", 5" and 6"
Lumens: 750lm to 1200lm
CCT: 2700K, 3000K, 3500K, 4000K

Cobalt LED retrofits consists of Click Series and Adjustable Series. Each retrofit utilize COB LEDs throughout the entire family, for a consistent appearance throughout. Fixtures are available with emergency wiring for easy installation with remote emergency battery.



PEARL RETROFIT

Specification Grade LED Retrofits

Aperture: 4", 5" and 6"
Lumens: 1200lm
CCT: 2700K, 3000K, 3500K, 4000K,
Comfort Dim (warm dim)

Specification LED retrofits utilize the same 4" Iolite technology for a high grade retrofit solution in residential and light commercial applications. Featuring COB LED technology with field adjustable beam spreads and a variety of square and round trims.



MARQUISE II RETROFIT

Commercial & Residential Grade Retrofits

Apertures: 4", 5" and 6"
Lumens: 900lm
CCT: 2700K, 3000K, 3500K, 4000K

Marquise LED retrofits utilize the same trims as dedicated Marquise II downlights for a deep cone solution in commercial and residential applications. Featuring COB LED technology with specified beam spreads in spot, narrow or flood options.



SAPPHIRE II RETROFIT

Architectural & Commercial Grade Retrofits

Apertures: 6" and 8"
Lumens: 900lm to 4500lm
CCT: 2700K, 3000K, 3500K, 4000K

Sapphire LED retrofits utilize the same trims as dedicated Sapphire II downlights for an easy replacement to out dated architectural and commercial luminaires. Featuring COB LED technology with specified beam spreads in spot, narrow or flood options. Variety of trims are available in reflector, wall wash or decorative glass options.



CAN-LESS

FLIN & FLAT

Wafer Downlights with Selectable CCT

Apertures: 4" and 6"
Lumens: 650lm to 1300lm
CCT: Selectable CCT

Wafer downlights are perfect solution any application. A selectable CCT switch is built-in to remote dimmable driver, allowing the end user to select the color temperature. IC Air-Tight luminaires feature a regressed lens and sharp baffle for reduced aperture brightness.



IOLITE CAN-LESS

Specification Grade Downlights

Apertures: 1", 2" and 4"
Lumens: 900lm to 1250lm
CCT: 2700K, 3000K, 3500K, 4000K or Comfort Dim

Award winning Iolite dedicated downlights in a small form factor for new construction or remodel applications. IC air-tight rated luminaires are ordered a la carte (module, trim and driver) and each module includes field changeable optics for customization.



THEIA

Deep LED Downlights with Selectable CCT

Apertures: 4", 6" and 8"
Lumens: 950lm to 2100lm
CCT: Selectable CCT

Theia downlights feature a deep regressed reflector to give the appearance of a dedicated downlight with a simplistic installation. IC Air-Tight commercial grade luminaires are available in three apertures and selectable CCT switch is built-in to remote dimmable driver.



QUARTZ

Commercial LED Downlights with Selectable Lumens & CCT

Apertures: 4", 6" and 8"
Lumens: 800lm to 2700lm
CCT: Selectable CCT

Quartz downlights are an architectural and commercial grade luminaire with two selectable switches built-in to the top of the fixtures. Switches control the lumens output and CCT, allowing the appearance of the fixture to be determined at time of installation.



M1

1" 12V LED Downlight

Aperture: 1"
Lumens: 100lm
CCT: 2700K or 3000K

12V M1 LED modules include four plastic downlight trims, three optics and 6" quick connect. Field changeable trims are available in variety of styles in black, brushed nickel or white finish. A remote driver is required.

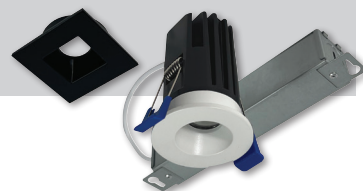


M1+

1" 120V LED Downlight

Aperture: 1"
Lumens: 600lm
CCT: 2700K or 3000K

120V M1+ downlights include a remote dimmable driver for IC air-tight applications. Round trim can be changed to square downlight for easy indoor & outdoor installations.



M2

2" LED Downlights

Aperture: 2"
Lumens: 400lm to 900lm
CCT: 2700K, 3000K or 4000K

Award winning M2 downlights offer the most versatility and options for any application. IC air-tight rated luminaires are available in downlight, adjustable, round or square trims. A multiple lighting system can be created with a two head or three head trim MLS flange accessory.



M4

4" LED Downlights

Aperture: 4"
Lumens: 950lm or 1100lm
CCT: 2700K or 3000K

M4 downlights are built off the same platform as M2 series, with a larger aperture and brighter output. IC air-tight rated luminaires are available in downlight, gimbal or elbow trims in round or square.



M-WAVE

Adjustable LED Downlights

Apertures: 2" and 4"
Lumens: 750lm or 1250lm
CCT: 2700K or 3000K

M-Wave downlights offers the most adjustment for aiming without any housing needed! IC air-tight rated luminaires extend up to 90° from surface and rotate 350°.



M-CURVE

Adjustable LED Downlights

Apertures: 4" and 6"
Lumens: 900lm or 1300lm
CCT: Selectable CCT (27K/30K/35K/40K/50K)

M-Curve adjustable downlights never expose the ceiling opening while adjusting 360°. IC Air-Tight and wet location rated.



Comparison of Recessed Downlights

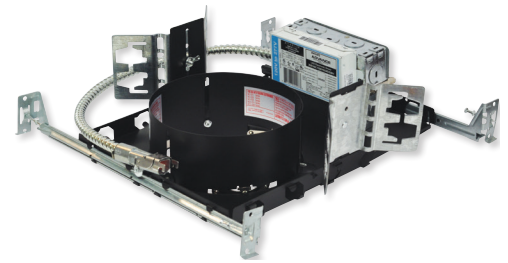
| | Name | Aperture | Lumens | CCT | Input Voltage | Dimming | Listing | Beam Spread |
|--|---------------------------|-----------------|------------------|--|----------------------|---------------------------------------|-------------|-------------------------------|
|  | ONYX LOW VOLTAGE RETROFIT | 4" | 800lm | Selectable 27K/30K/35K /40K/50K | 12VAC | Triac or ELV | Wet | Fixed |
|  | ONYX RETROFIT | 4", 5/6" and 6" | 700lm to 1150lm | Dedicated or Selectable | 120VAC | Triac or ELV | Damp or Wet | Fixed |
|  | COBALT RETROFIT | 4", 5" and 6" | 750lm to 1200lm | Dedicated 27K, 30K, 35K, 40K or Comfort Dim | 120VAC or 120/277VAC | Triac, ELV or 0-10V | Damp or Wet | Fixed or Field Changeable |
|  | PEARL RETROFIT | 4" and 5/6" | 1200lm | Dedicated 27K, 30K, 35K, 40K or Comfort Dim | 120VAC | Triac or ELV | Damp or Wet | Field Changeable |
|  | SLOPED CEILING RETROFIT | 6" | 1200lm | Dedicated or Selectable | 120VAC | Triac or ELV | Damp | Fixed |
|  | IOLITE | 1", 2" and 4" | 800lm to 2500lm | Dedicated 27K, 30K, 35K, 40K, 50K, Comfort Dim | 120VAC or 120/277VAC | Triac, ELV, 0-10V or Lutron EcoSystem | Damp or Wet | Field Changeable or 10° optic |
|  | COBALT SHALLOW | 4" | 850lm or 1250lm | Dedicated 27K, 30K, 35K, 40K | 120VAC or 120/277VAC | Triac, ELV or 0-10V | Wet | Fixed |
|  | COBALT HIGH LUMEN | 6" | 1500lm or 2000lm | Dedicated 27K, 30K, 35K, 40K | 120VAC or 120/277VAC | Triac, ELV or 0-10V | Wet | Fixed |
|  | MARQUISE | 4", 5" and 6" | 900lm or 2500lm | Dedicated 27K, 30K, 35K, 40K | 120VAC or 120/277VAC | Triac, ELV or 0-10V | Damp or Wet | Specified (SP, NFL, FL) |
|  | SAPPHIRE | 4", 6" and 8" | 900lm to 8000lm | Dedicated 27K, 30K, 35K, 40K | 120VAC or 120/277VAC | Triac, ELV or 0-10V | Damp or Wet | Specified (SP, NFL, FL) |

Comparison of Can-less Downlights

| | Name | Aperture | Lumens | CCT | Input Voltage | Dimming | Listing | Beam Spread |
|---|-----------------|---------------|-----------------|--|----------------------|--------------|-------------|------------------|
|  | M1 | 1" | 100lm | Dedicated 27K or 30K | 12VDC | Triac or ELV | Wet | Field Changeable |
|  | M1+ | 1" | 600lm | Dedicated 27K or 30K | 120VAC | Triac or ELV | Wet | Fixed |
|  | M2 | 2" | 400lm to 900lm | Dedicated 27K, 30K or 40K | 120VAC | Triac or ELV | Damp or Wet | Fixed |
|  | M4 | 4" | 950lm or 1100lm | Dedicated 27K or 30K | 120VAC | Triac or ELV | Damp or Wet | Fixed |
|  | IOLITE CAN-LESS | 1", 2" & 4" | 900lm to 1250lm | Dedicated 27K, 30K, 35K, 40K, Warm Dim | 120VAC | Triac or ELV | Wet | Field Changeable |
|  | M-WAVE | 2" and 4" | 750lm or 1250lm | Dedicated 27K or 30K | 120VAC | Triac or ELV | Wet | Field Changeable |
|  | M-CURVE | 4" and 6" | 900lm or 1300lm | Selectable 27K/30K/35K /40K/50K | 120VAC | Triac or ELV | Wet | Fixed |
|  | FLAT | 4" and 6" | 700lm or 1050lm | Selectable 27K/30K/35K /40K/50K | 120VAC | Triac or ELV | Wet | Fixed |
|  | FLIN | 4" and 6" | 650lm to 1300lm | Selectable 27K/30K/35K /40K/50K | 120VAC or 120-277VAC | Triac or ELV | Wet | Fixed |
|  | FLIN ADJUSTABLE | 4" and 6" | 900lm or 1100lm | Selectable 27K/30K/35K /40K/50K | 120VAC | Triac or ELV | Wet | Fixed |
|  | THEIA | 4", 6" and 8" | 950lm to 2100lm | Selectable 27K/30K/35K /40K/50K | 120VAC or 120-277VAC | Triac or ELV | Wet | Fixed |
|  | QUARTZ | 4", 6" and 8" | 800lm to 2700lm | Selectable 30K/35K/40K | 120-277VAC | 0-10V | Wet | Fixed |



Scan QR code
for more information



NCAH2-630
Architectural / Commercial
New Construction Frame-In



NCHR2-634
Architectural / Commercial
Remodel Frame-In



NC2-439
4" Adjustable



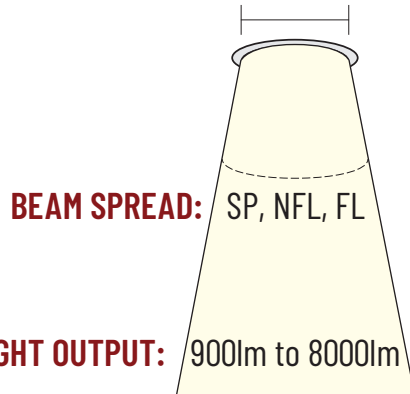
SAPHIRE SERIES

Architectural and Commercial LED Downlights

A high efficiency commercial series feature COBLED packages (Cree TrueWhite® or Cree COB). Sizes includes 4", 6" & 8" apertures up to 8000 lumen packages in 2700K, 3000K, 3500K or 4000K. Featuring deep cone open reflectors, adjustable, wall wash or decorative glasses reflectors. Frame-in options include universal architectural/commercial, remodel or retrofit existing frame-ins.

| | |
|----------------------|--|
| APPLICATION: | Architectural and Commercial |
| INSTALLATION: | New Construction, Remodel, Retrofit |
| APERTURES: | 4", 6" and 8" |
| LUMENS: | 900lm to 8000lm (non-adjustable) 900lm to 3500lm (adjustable) |
| COLOR TEMP.: | 2700K, 3000K, 3500K, 4000K |
| DIMMING: | Triac, ELV or 0-10V |
| LISTINGS: | cULus listed for wet locations (adjustable is damp) ENERGY STAR certified |

APERTURE: 4", 6", 8"



BEAM SPREAD: SP, NFL, FL

LIGHT OUTPUT: 900lm to 8000lm

COLOR TEMPERATURE:





Scan QR code
for more information



Selectable Lumens
Three position switch
varies by size

Selectable CCT
Three position switch
3000K / 3500K / 4000K



NQZ2-41TWTW-MPW
4" Quartz



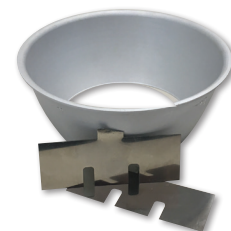
NQZ2-81TWTW-MPW
8" Quartz



NQZ2-61TWTW-MPW
6" Quartz



NQZ-6R-F
Optional
New Construction Frame-In



NQZ-81REFL
Optional Snap-In Reflector



Shown with
Clear Diffused
Reflector

Shown with
Haze Reflector

Shown with
Specular Clear
Reflector

QUARTZ SERIES

Selectable Wattage & Selectable CCT

Quartz Series is an IC rated architectural/commercial grade LED high lumen downlight. Each luminaire includes two tunable switches; Selectable Lumens allows the end user to determine the wattage input & Selectable CCT allows for changing color temperature appearance. Producing up to 2700lm in 3000K, 3500K or 4000K in 4", 6" or 8" apertures. Snap-in reflectors allow for in-field adjustment and customization. Easily upgrade old commercial and architectural fixtures to LED technology with Quartz's included pre-wired junction box.

| | |
|---------------------------|--|
| APPLICATION: | Architectural and Commercial |
| INSTALLATION: | Can-less |
| APERTURES: | 4", 6" and 8" |
| LUMENS: | Selectable Lumens - 4" (1250lm to 800lm), 6" (2200lm to 1350lm), 8" (2700lm to 1650lm) |
| COLOR TEMPERATURE: | Selectable CCT (3000K / 3500K / 4000K) |
| DIMMING: | 0-10V |
| LISTINGS: | cULus listed for wet locations ENERGY STAR certified Certified to requirements of CA Title 24 JA8-2022 |

APERTURE: 4", 6", 8"

BEAM SPREAD: WIDE FLOOD

LIGHT OUTPUT: 800lm to 2700lm

COLOR TEMPERATURE: 3000K 3500K 4000K





Scan QR code
for more information



Adjusts up
to 25°



NRM2-612
6\"/>



NRM2-519
5\"/>



NRM2-6S11
6\"/>



NRM2-411
4\"/>



NHMIC2
New Construction Housing



NHRM2
Remodel Housing



NHRMIC2-926
Sloped Remodel Housing



Black Reflector
Black Flange



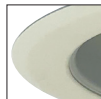
Bronze Reflector
Bronze Flange



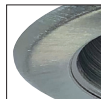
Specular Clear
White Flange



Diffused Clear
White Flange



Haze Reflector
White Flange



Natural Metal
Natural Metal



Black Reflector
White Flange



Copper Reflector
Copper Flange



Diffused Clear
Diffused Flange



Haze Reflector
Haze Flange



Matte Powder White
Matte Powder White



White Reflector
White Flange

MARQUISE SERIES

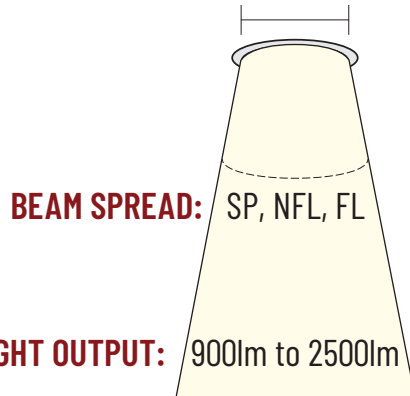
Architectural and Commercial LED Downlights

Commercial and high-end residential downlights that utilize the same COB LED technology as the Sapphire II Series. Available in 4", 5" & 6" apertures up to 2500 lumen packages in 2700K, 3000K, 3500K or 4000K. Variety of adjustable reflectors, square, slope and baffles. Housings include new construction, remodel, slope or retrofit existing housings.

| | |
|---------------------------|---|
| APPLICATION: | Commercial and High-End Residential |
| INSTALLATION: | New Construction, Remodel, Retrofit, Sloped Ceiling |
| APERTURES: | 4", 5" and 6" |
| LUMENS: | 900lm to 2500lm |
| COLOR TEMPERATURE: | 2700K, 3000K, 3500K, 4000K |
| DIMMING: | Triac, ELV or 0-10V |
| LISTINGS: | cULus listed for wet locations (adjustable is damp) ENERGY STAR certified Certified to requirements of CA Title 24 JA8-2022 |



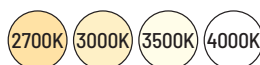
APERTURE: 4", 5", 6"



BEAM SPREAD: SP, NFL, FL

LIGHT OUTPUT: 900lm to 2500lm

COLOR TEMPERATURE:





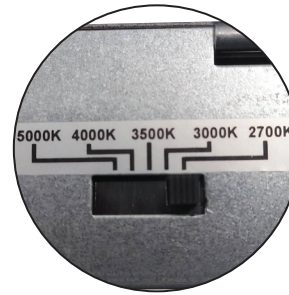
Scan QR code
for more information



Only 1-7/8"



NLTH-41TW-MPW
4" Theia
950lm



Selectable CCT
Five position switch
27K / 30K / 35K / 40K / 50K

Only 2-3/4"

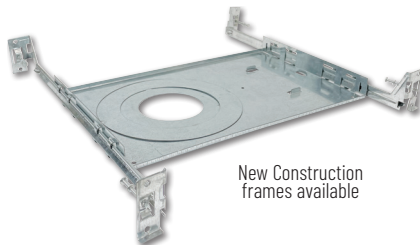


NLTH-61TW-MPW
6" Theia
1400lm

Only 3-1/4"



NLTH-81TW-MPW
8" Theia
2100lm



New Construction
frames available

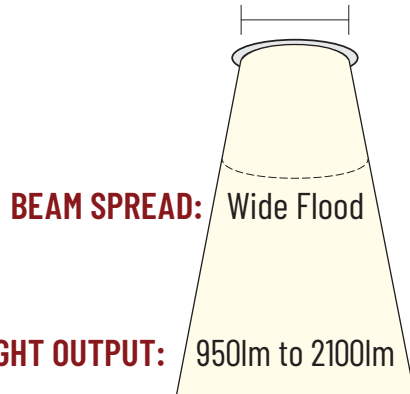
THEIA SERIES

Can-less LED Downlights with Selectable CCT

Commercial and residential IC Air-Tight LED downlights are designed for easy installation into new construction or remodel applications. Available in 4", 6" & 8" apertures and delivering up to 2100 lumens. Each luminaire includes five color temperatures (27K/30K/35K/40K/50K) with an integral switch. Each downlight includes a pre-wired junction box with dimmable LED driver.

| | |
|---------------------------|---|
| APPLICATION: | Light Commercial and Residential |
| INSTALLATION: | New Construction and Remodel |
| APERTURES: | 4", 6" or 8" |
| LUMENS: | 950lm to 2100lm |
| COLOR TEMPERATURE: | Selectable CCT (27K / 30K / 35K / 40K / 50K) |
| DIMMING: | Triac or ELV |
| LISTINGS: | cETLus listed for wet locations ENERGY STAR certified Certified to requirements of CA Title 24 JA8-2022 |

APERTURES: 4", 6", 8"



BEAM SPREAD: Wide Flood

LIGHT OUTPUT: 950lm to 2100lm

COLOR TEMPERATURE: 2700K 3000K 3500K 4000K 5000K





Scan QR code
for more information



Trimless

Flush Mount

Flanged

Patent No. D824567S

NHIOICD / NHIOICDCP
Iolite New Construction
Housing

NHIOICD-215,220,225/
NHIOICD-415,420,425
Iolite High Lumen New
Construction Housing

NHRIIC-48

4" Iolite Remodel Housing

NHRIIC-28

2" Iolite Remodel Housing

NHRIIC-16

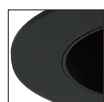
1" Iolite Remodel Housing

NIO-4RND
4" Round Reflector

NIOB-2SC
2" Square Adjustable Cone

NIO-1RNG
1" Round Reflector

NIOB-1SNB
1" Square Bullnose



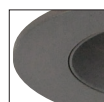
Black Reflector
Black Flange



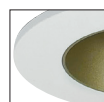
Black Reflector
Matte Powder White



Black Reflector
White Flange



Bronze Reflector
Bronze Flange



Champagne Haze
Matte Powder White



Specular Clear
Matte Powder White



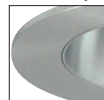
Haze Reflector
White Flange



Haze Reflector
Matte Powder White



Matte Powder White
Matte Powder White



Natural Metal
Natural Metal



White Reflector
White Flange

IOLITE

Dedicated Specification Grade Downlights

Small aperture specification downlights available in 1", 2" and 4" apertures. Featuring COB LED technology with field adjustable beam spreads (10° optic also available) and a variety of square and round reflectors. Iolite Series produces up to 2500 lumens in 2700K, 3000K, 3500K, 4000K, 5000K or Comfort Dim technology. Also 2" and 4" apertures are available in trimless, for a clean knife edge look. Housings include new construction, remodel or retrofit existing housings.

| | |
|--------------------|---|
| APPLICATION: | Architectural, Commercial and High-End Residential |
| INSTALLATION: | New Construction, Remodel, Retrofit, Trimless |
| APERTURES: | 1", 2" and 4" |
| LUMENS: | 600lm to 2500lm |
| COLOR TEMPERATURE: | 2700K, 3000K, 3500K, 4000K, 5000K, Comfort Dim |
| DIMMING: | Triac, ELV, 0-10V or Lutron EcoSystem |
| LISTINGS: | cULus listed for wet locations (adjustable is damp) ENERGY STAR certified Certified to requirements of CA Title 24 JA8-2022 |

APERTURE: 1", 2", 4"

BEAM SPREAD: SP, NFL, FL

LIGHT OUTPUT: 600lm to 2500lm

COLOR TEMPERATURE: 2700K 3000K 3500K 4000K 5000K COMFORT DIM





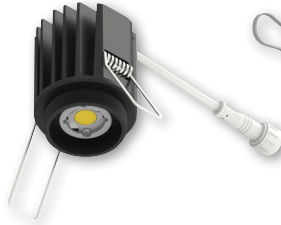
Scan QR code
for more information



NIOC-24LED
2" & 4" Iolite Can-less
LED Module



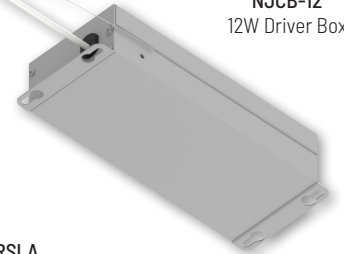
NIOC-1LED
1" Iolite Can-less
LED Module



NJCB-09
9W Driver Box



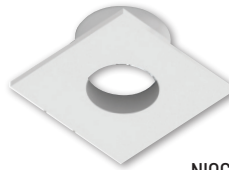
NJCB-12
12W Driver Box



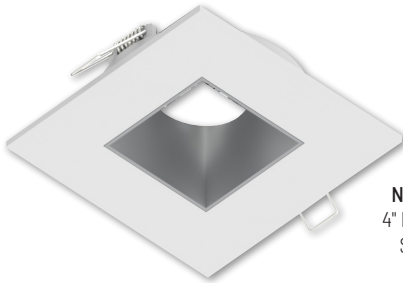
NIOC-2RPH
2" Iolite Can-less
Pinhole Trim



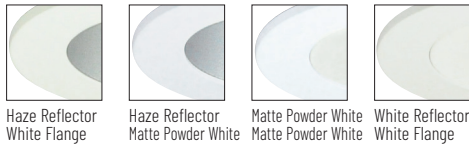
NIOC-1SNG
1" Iolite Can-less
Square Trim



NIOC-4SNDQ
4" Iolite Can-less
Square Trim

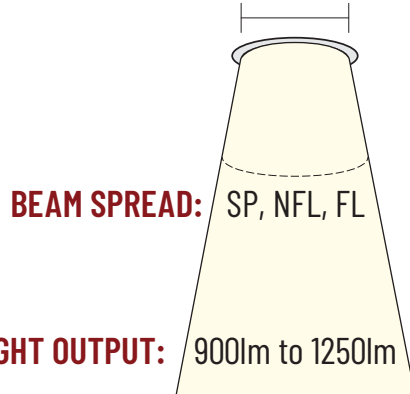


NIOC-4RSLA
4" Iolite Can-less
Adjustable Slot Trim



Haze Reflector White Flange Haze Reflector Matte Powder White Matte Powder White White Reflector White Flange

APERTURE: 1", 2", 4"



BEAM SPREAD: SP, NFL, FL

LIGHT OUTPUT: 900lm to 1250lm

COLOR TEMPERATURE:



IOLITE CAN-LESS

Can-less Specification Grade Downlights

Designed to replicate our award winning specification grade Iolite Series, can-less downlights require no housing. COB LED modules include three field adjustable optics and a variety of square or round trims are sold separately. Iolite can-less luminaires produce up to 1250 lumens in 2700K, 3000K, 3500K, 4000K or Comfort Dim (warm dimming) technology.

| | |
|---------------------------|---|
| APPLICATION: | Architectural, Commercial and High-End Residential |
| INSTALLATION: | New Construction or Remodel |
| APERTURES: | 1", 2" and 4" |
| LUMENS: | 900lm to 1250lm |
| COLOR TEMPERATURE: | 2700K, 3000K, 3500K, 4000K, Comfort Dim |
| DIMMING: | Triac or ELV |
| LISTINGS: | cULus listed for wet locations (adjustable is damp) ENERGY STAR certified Certified to requirements of CA Title 24 JA8-2022 |





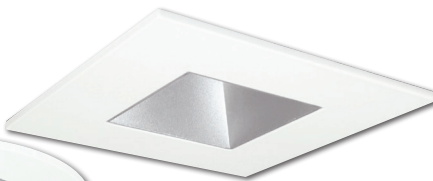
Scan QR code
for more information



NPR-56RND
5 7/8" Round Reflector



NPR-4RND
4" Round Reflector



NPR-4SND
4" Square Reflector
w/ Square Aperture

Adjusts up →
↙ to 35°



NPR-4RC
4" Round Adjustable Gimbal



NPR-4SG
4" Square Adjustable Gimbal



NPR-4SND
4" Square Reflector
w/ Round Aperture



Retrofit into
existing or new
 housings



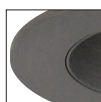
Black Reflector
Black Flange



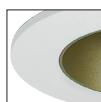
Black Reflector
Matte Powder White



Black Reflector
White Flange



Bronze Reflector
Bronze Flange



Champagne Haze
Matte Powder White



Specular Clear
Matte Powder White



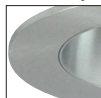
Haze Reflector
White Flange



Haze Reflector
Matte Powder White



Matte Powder White
Matte Powder White



Natural Metal
Natural Metal



White Reflector
White Flange

PEARL SERIES

LED Retrofit Downlights

Pearl LED Retrofit luminaires are the high-end, quality solution for easy LED retrofitting in residential and light commercial applications. With a maximum height of just 4-1/2", luminaires can be retrofitted in most IC and non-IC housings—including shallow! Available in a beautiful array of fixed and adjustable styles in ten finishes, each Pearl includes three field changeable optics for maximum design control. Optional accessories can further customize the fixtures.

| | |
|---------------------------|---|
| APPLICATION: | Commercial and Residential |
| INSTALLATION: | Retrofit |
| APERTURE: | 4", 5" and 6" |
| LUMENS: | 800lm to 1200lm |
| COLOR TEMPERATURE: | 2700K, 3000K, 3500K, 4000K, Comfort Dim |
| DIMMING: | Triac or ELV |
| LISTINGS: | cULus classified for wet locations (adjustable is damp) ENERGY STAR certified Certified to requirements of CA Title 24 JA8-2022 |

APERTURE: 4", 5", 6"

BEAM SPREAD: SP, NFL, FL

LIGHT OUTPUT: 800lm to 1200lm

COLOR TEMPERATURE: 2700K 3000K 3500K 4000K COMFORT DIM





Scan QR code
for more information



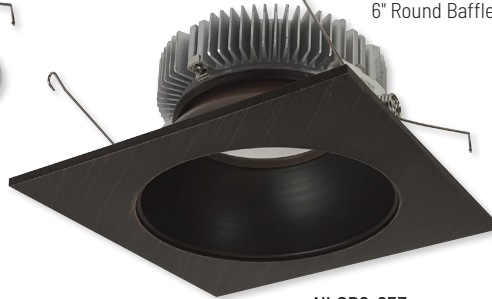
NLCB2-656
6" Square Reflector
with Square Aperture



NLCB2-651
6" Round Reflector



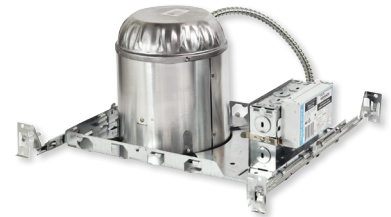
NLCB2-652
6" Round Baffle



NLCB2-653
6" Square Reflector
with Round Aperture



NHICCB-6
IC Air-Tight New Construction



NHCB-6
Non-IC New Construction



NHRCB-6
Non-IC Remodel



COBALT HIGH LUMEN

Commercial and Residential LED Downlights

Commercial and residential dedicated LED series utilizing the same reflectors and color consistency as the Cobalt Retrofit Series. Delivering 1500 or 2000 lumens in 2700K, 3000K, 3500K or 4000K. Variety of round and square reflectors in ten finishes. Housings include IC Air-Tight new construction, Non-IC or remodel with emergency options.

| | |
|---------------------------|--|
| APPLICATION: | Architectural, Commercial and High-End Residential |
| INSTALLATION: | New Construction and Remodel |
| APERTURE: | 6" |
| LUMENS: | 1500lm or 2000lm |
| COLOR TEMPERATURE: | 2700K, 3000K, 3500K, 4000K |
| DIMMING: | Triac, ELV or 0-10V |
| LISTINGS: | cULus listed for wet locations ENERGY STAR certified Certified to requirements of CA Title 24 JA8-2022 |



APERTURE: 6"

BEAM SPREAD: WIDE FLOOD

LIGHT OUTPUT: 1500lm or 2000lm

COLOR TEMPERATURE: 2700K 3000K 3500K 4000K



Scan QR code
for more information



NLCBC2-455
4" Square Pinhole



NLCBC2-656
6" Square Reflector
with Square Aperture



NLCBC2-451
4" Round Reflector



NLCBC2-552
5" Round Baffle



NLCBC2-553
5" Square Reflector
with Round Aperture



Retrofit into
existing or new
 housings



Optional Emergency
Wiring &
0-10V dimming!



Black Reflector
Black Flange



Black Reflector
White Flange



Bronze Reflector
Bronze Flange



Copper Reflector
Copper Flange



Diffused Clear
White Flange



Haze Reflector
Matte Powder White



Haze Reflector
White Flange



Matte Powder White



Natural Metal
Natural Metal



White Reflector
White Flange

COBALT CLICK

LED Retrofit Downlights

Cobalt Click LED Retrofit reflectors allow the end user over 300 combinations with "Click" feature. Reflectors can easily be changed with a "click" and deliver 750 or 1000 lumens in 2700K, 3000K, 3500K, 4000K or Comfort Dim technology. Luminaires can be retrofitted in most housings—including shallow! Specification grade options include 0-10V dimming, 277V input or Emergency options.

| | |
|---------------------------|--|
| APPLICATION: | Light Commercial and Residential |
| INSTALLATION: | Retrofit |
| APERTURES: | 4", 5" and 6" |
| LUMENS: | 750lm or 1000lm |
| COLOR TEMPERATURE: | 2700K, 3000K, 3500K, 4000K, Comfort Dim |
| DIMMING: | Triac, ELV or 0-10V |
| LISTINGS: | cULus classified for wet locations ENERGY STAR certified Certified to requirements of CA Title 24 JA8-2022 |



APERTURE: 4", 5", 6"

BEAM SPREAD: WIDE FLOOD

LIGHT OUTPUT: 750lm or 1000lm

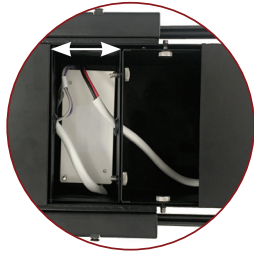
COLOR TEMPERATURE: 2700K 3000K 3500K 4000K COMFORT DIM



Scan QR code
for more information



NHSIC-4 Series
Shallow IC Air-Tight Housing

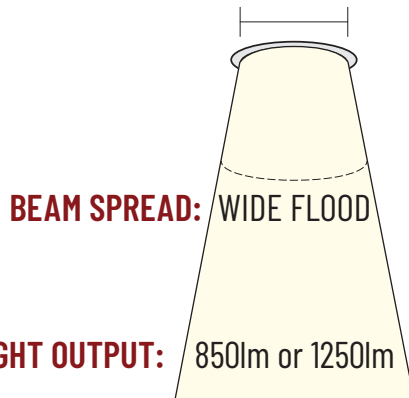


Patented driver compartment

Compartment easily slides to allow access from below the ceiling



APERTURE: 4"



LIGHT OUTPUT: 850lm or 1250lm

COLOR TEMPERATURE: 2700K 3000K 3500K 4000K



COBALT SHALLOW

Residential LED Downlights

Commercial and residential dedicated LED series utilizing the same reflectors and color consistency as the Cobalt Retrofit Series. Delivering 850 or 1250 lumens in 2700K, 3000K, 3500K or 4000K. Variety of round and square reflectors in ten finishes. Housings include IC Air-Tight new construction, Non-IC or remodel with emergency options.

| | |
|---------------------------|--|
| APPLICATION: | Architectural, Commercial and High-End Residential |
| INSTALLATION: | New Construction |
| APERTURE: | 4" |
| LUMENS: | 850lm or 1250lm |
| COLOR TEMPERATURE: | 2700K, 3000K, 3500K, 4000K |
| DIMMING: | Triac, ELV or 0-10V |
| LISTINGS: | cULus listed for wet locations ENERGY STAR certified Certified to requirements of CA Title 24 JA8-2022 |





Scan QR code
for more information



Rotates 358°



NLCBC-669
6" Adjustable
Reflector

Adjusts up
to 30°



NLCBC-569
5" Adjustable Reflector

Never break the
ceiling plane!

Tilt up to 30° without
exposing recessed
housing aperture.



NLCBC-469
4" Adjustable Reflector



NLCBC-x69TIR
TIR Optics
available



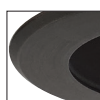
Retrofit into
existing or new
housings



Optional Emergency
Wiring &
0-10V dimming!



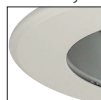
Black Reflector
Black Flange



Bronze Reflector
Bronze Flange



Haze Reflector
Natural Metal Reflector



Haze Reflector
White Flange

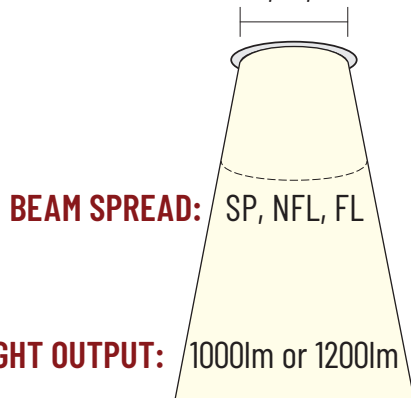


White Reflector
White Flange



Matte Powder White
Matte Powder White

APERTURE: 4", 5", 6"



BEAM SPREAD: SP, NFL, FL

LIGHT OUTPUT: 1000lm or 1200lm

COLOR TEMPERATURE: 2700K 3000K 3500K 4000K

COBALT ADJUSTABLE

LED Retrofit Downlights

Cobalt Adjustable LED Retrofit reflectors allow the end user to rotate and aim luminaires in desired direction. Delivering over 1200 lumens in 2700K, 3000K, 3500K or 4000K. Luminaires can be retrofitted in most housings—including shallow! Specification grade options include 0-10V dimming, 277V input or Emergency options. Premium TIR optics are also available for precise beam control.

| | |
|--------------------|---|
| APPLICATION: | Light Commercial and Residential |
| INSTALLATION: | Retrofit |
| APERTURES: | 4", 5" and 6" |
| LUMENS: | 1000lm or 1200lm |
| COLOR TEMPERATURE: | 2700K, 3000K, 3500K, 4000K |
| DIMMING: | Triac, ELV or 0-10V |
| LISTINGS: | cULus classified for damp locations ENERGY STAR certified Certified to requirements of CA Title 24 JA8-2022 |





Scan QR code
for more information



NLCBC-4870
4" Square Elbow



358° Rotation



NLCBC-470
4" Round Elbow



Black



Bronze



Matte Powder White



Natural Metal



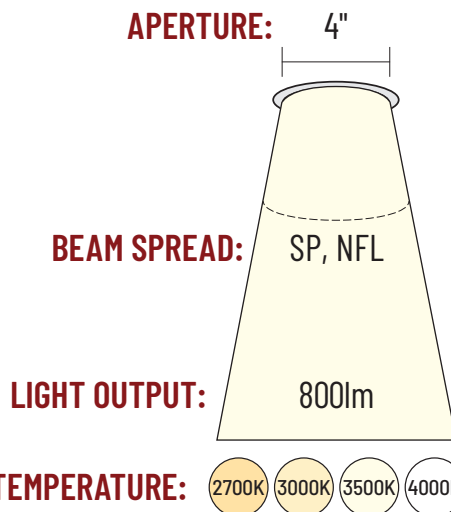
White

COBALT ELBOW

LED Retrofit Downlights

Cobalt Elbow LED Retrofit luminaires allow the end user to rotate and aim luminaires in desired direction. Delivering over 800 lumens in 2700K, 3000K, 3500K or 4000K. Luminaires include 27° spot and 48° narrow flood optics for precise beam control. Elbow tilts out to 75° and can be rotated up to 358° to aim in almost any direction desired.

| | |
|--------------------|--|
| APPLICATION: | Architectural, Commercial and Residential |
| INSTALLATION: | Retrofit |
| APERTURE: | 4" |
| LUMENS: | 800lm |
| COLOR TEMPERATURE: | 2700K, 3000K, 3500K, 4000K |
| DIMMING: | Triac or ELV |
| LISTINGS: | cULus classified for damp locations Certified to requirements of CA Title 24 JA8-2022 |





Scan QR code
for more information



NOXAC-436
4" AC Onyx
Square Reflector

NOXAC-636
6" AC Onyx
Square Reflector



NOXAC-5632
5"/6" AC Onyx Baffle



NOXAC-432
4" AC Onyx Baffle



NOXLV-4RITWW
4" Onyx Low Voltage Reflector
Selectable CCT



NOXAC-4SWTW
4" AC Onyx Wall Wash
Selectable CCT

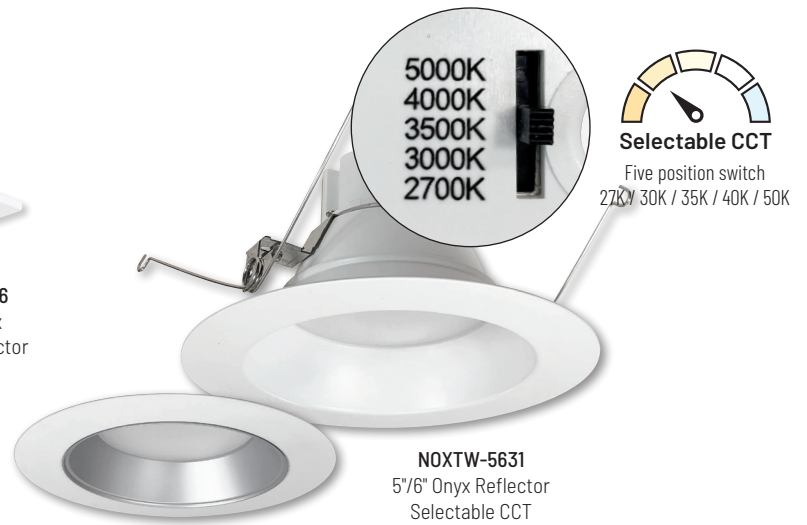
NOXTW-431
4" Onyx Reflector (w/ Haze insert)
Selectable CCT

NOXAC-4RWTW
4" AC Onyx Wall Wash
Selectable CCT

NOXAC-4RGTW
4" AC Onyx Adjustable
Selectable CCT

NOX-436
4" Onyx Adjustable

NOX-5636
5"/6" Onyx Adjustable



NOXTW-5631
5"/6" Onyx Reflector
Selectable CCT

5000K
4000K
3500K
3000K
2700K



Selectable CCT
Five position switch
2700K / 3000K / 3500K / 4000K / 5000K

ONYX SERIES

LED Retrofit Downlights

Onyx LED Retrofits are available in low voltage, wall wash, square, adjustable, selectable CCT or AC luminaire without a driver. Selectable CCT allows the end user to select from 5 CCT options. Luminaires are also available dedicated CCT (2700K, 3000K, 3500K, 4000K or 5000K). 5"/6" retrofits can be installed in existing 5" or 6" recessed housings. AC and Tunable White Open Reflectors accept baffle and reflector inserts to customize each appearance.

| | |
|---------------------------|---|
| APPLICATION: | Light Commercial and Residential |
| INSTALLATION: | Retrofit |
| APERTURES: | 4", 5" and 6" |
| LUMENS: | 700lm to 1150lm |
| COLOR TEMPERATURE: | 2700K, 3000K, 3500K, 4000K, 5000K |
| DIMMING: | Triac or ELV |
| LISTINGS: | cULus classified for wet locations (adjustable is damp) ENERGY STAR certified Certified to requirements of CA Title 24 JA8-2022 |



APERTURE: 4", 5", 6"

BEAM SPREAD: WIDE FLOOD

LIGHT OUTPUT: 700lm to 1150lm

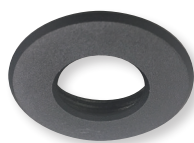
COLOR TEMPERATURE: 2700K 3000K 3500K 4000K 5000K



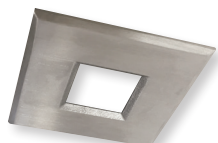
Scan QR code
for more information



NM1-170
1" M1 LED Downlight
(includes four plastic trims)



NM1-RSS
Round Stainless Trim



NM1-SSS
Square Stainless Trim



NM1-RSSD
Round Indicator Trim



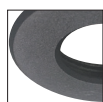
NM1-RAEYELID
Round Scoop Trim



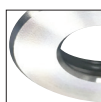
NM1-RLouv
Round Louver Trim



NM1-RAIHEC
Round Hexcell Louver Trim



Black



Brushed Nickel



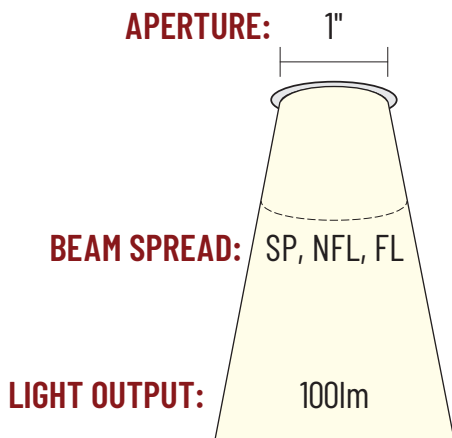
White

M1 SERIES

1" 12V Can-less LED Downlight

M1 miniature recessed series features quality and convenience with easy installation for indoor and outdoor applications. LED luminaires include four plastic downlight trims, four optics and 6" quick connect for 12V driver. LED modules are available in 2700K or 3000K. No housing is required and can be installed in insulated ceilings. Field changeable optics and trims allow for each installation to be customized per application.

| | |
|---------------------------|--|
| APPLICATION: | Light Commercial and Residential |
| INSTALLATION: | Can-less |
| APERTURE: | 1" |
| LUMENS: | 100lm |
| COLOR TEMPERATURE: | 2700K or 3000K |
| DIMMING: | Triac or ELV (12V Driver required) |
| LISTINGS: | cETLus listed for wet locations (driver is damp) |



COLOR TEMPERATURE:

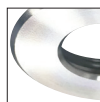




Scan QR code
for more information



Matte Black



Bronze



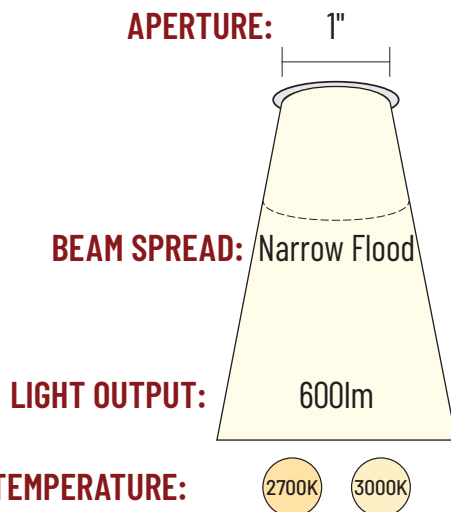
Matte Powder White

M1+ SERIES

1" 120V Can-less LED Downlight

M1+ is an upgrade to our first generation M1 1" downlights. From 12V input to 120V input with Triac or ELV dimming. From 100 lumens to 600 delivered lumens. Die-cast trims come standard in round matte black or matte powder white finishes. Luminaires include a pre-wired junction box, no housing is required. IC Air-Tight rated luminaires are simple to install.

| | |
|--------------------|---|
| APPLICATION: | Light Commercial and Residential |
| INSTALLATION: | Can-less |
| APERTURE: | 1" |
| LUMENS: | 600lm |
| COLOR TEMPERATURE: | 2700K or 3000K |
| DIMMING: | Triac or ELV |
| LISTINGS: | cETLus listed for wet locations ENERGY STAR certified Certified to requirements of CA Title 24 JA8-2022 |





Scan QR code
for more information



NM2-2RDC
2" M2 LED Round Downlight

NM2-2RDCS
2" M2 LED Round
Lensed Downlight

NM2-2RG
2" M2 LED Round Gimbal



NM2-2SDC
2" M2 LED Square Downlight

NM2-2SB
2" M2 LED Square Baffle

NM2-2R270
2" M2 LED Round Elbow



NM2-TLMR-R
Mud Plate

NM2-2RTLDC
2" M2 LED Round Trimless

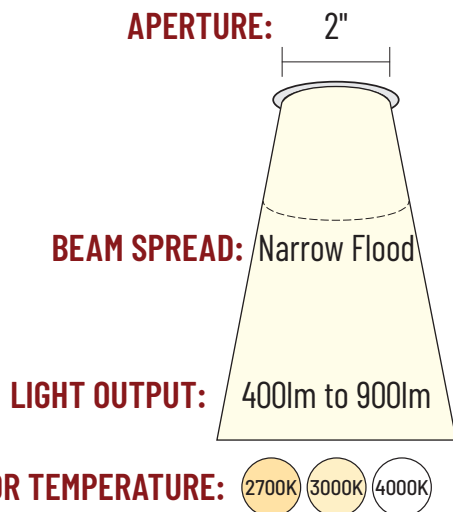


M2 SERIES

2" Can-less LED Downlights

M2 Series of high quality miniature recessed LED downlights are ideal for remodel or new constructions in residential and light commercial applications. M2 luminaires require no housing, making installation easy. IC Air-Tight rated luminaires are available in round or square apertures in a variety of styles in matte powder white or black finish. A range of accessories allows customization to desired appearance. M2 luminaires deliver up to 900 lumens in 2700K or 3000K at 90+ CRI.

| | |
|---------------------------|--|
| APPLICATION: | Light Commercial and Residential |
| INSTALLATION: | Can-less |
| APERTURE: | 2" |
| LUMENS: | 400lm to 900lm |
| COLOR TEMPERATURE: | 2700K, 3000K or 4000K |
| DIMMING: | Triac or ELV |
| LISTINGS: | cETLus listed for damp and wet locations ENERGY STAR certified Certified to requirements of CA Title 24 JA8-2022 |





Scan QR code
for more information



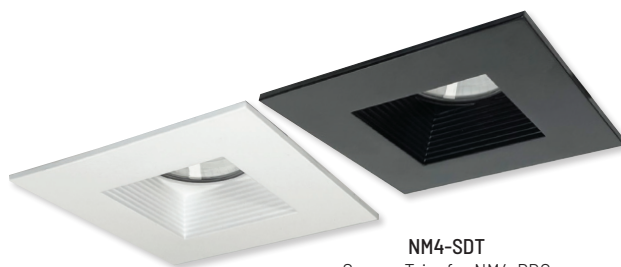
NM4-RG
4" M4 LED Round Gimbal
950lm



NM4-RDC
4" M4 LED Round Downlight
1100lm



NM4-R470
4" M4 LED Round Elbow
950lm



NM4-SDT
Square Trim for NM4-RDC



NM4-SET
Square Trim for NM4-R470

M4 SERIES

4" Can-less LED Downlights

M4 Series of high quality miniature recessed LED downlights are ideal for remodel or new constructions in residential and light commercial applications. M4 luminaires require no housing, making installation easy. IC Air-Tight rated luminaires are available in round or square apertures in a variety of styles in matte powder white or black finish. A range of accessories allows customization to desired appearance. M4 luminaires deliver up to 1000 lumens in 2700K or 3000K at 90+ CRI.

| | |
|---------------------------|--|
| APPLICATION: | Light Commercial and Residential |
| INSTALLATION: | Can-less |
| APERTURE: | 4" |
| LUMENS: | Up to 1000lm |
| COLOR TEMPERATURE: | 2700K or 3000K |
| DIMMING: | Triac or ELV |
| LISTINGS: | cETLus listed for damp and wet locations ENERGY STAR certified Certified to requirements of CA Title 24 JA8-2022 |



APERTURE:

4"

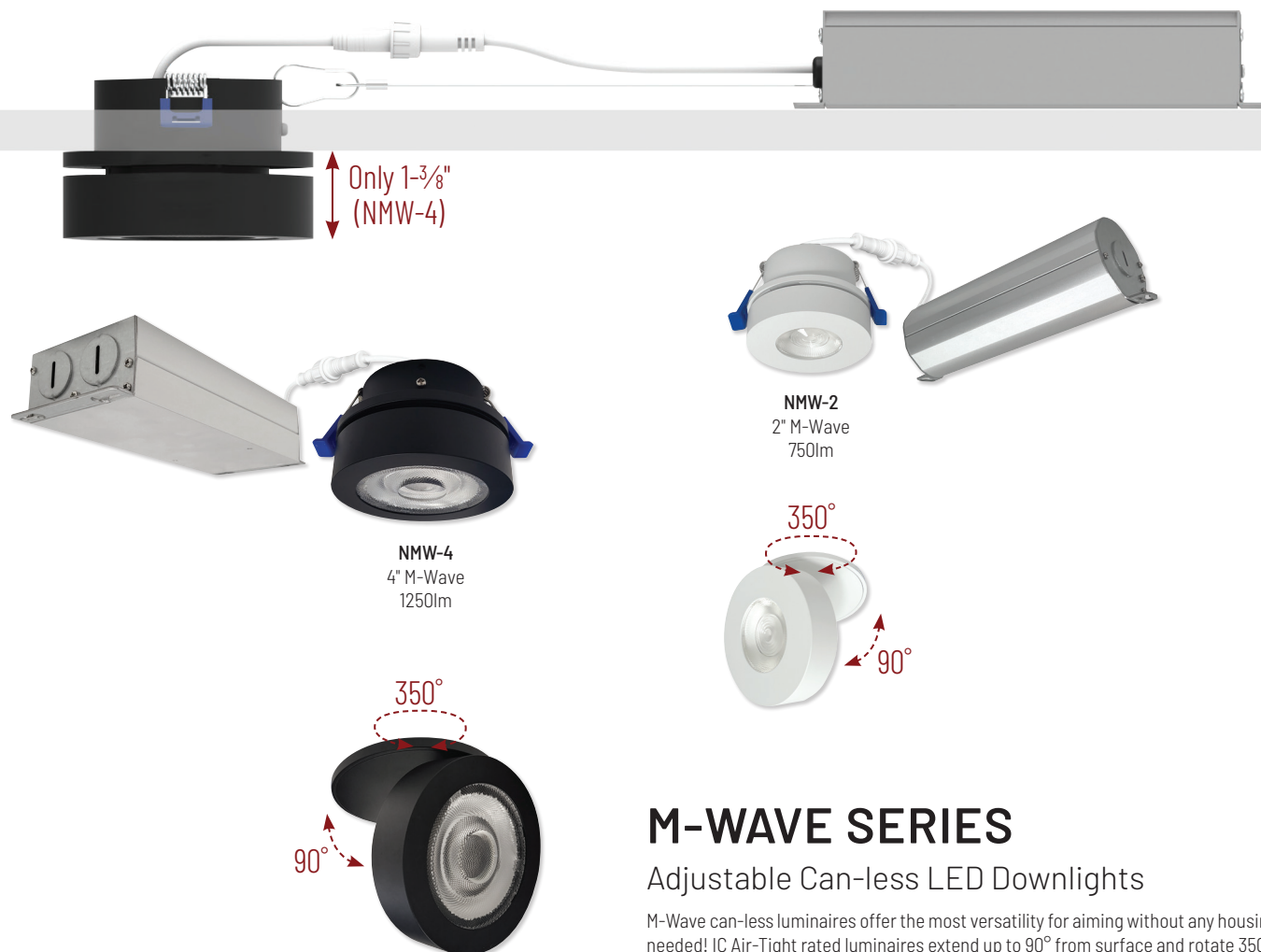
BEAM SPREAD: Narrow Flood

LIGHT OUTPUT: Up to 1000lm

COLOR TEMPERATURE: 2700K 3000K



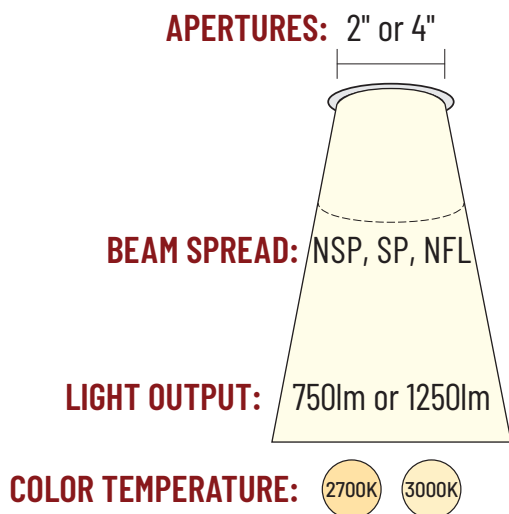
Scan QR code
for more information



M-WAVE SERIES

Adjustable Can-less LED Downlights

M-Wave can-less luminaires offer the most versatility for aiming without any housing needed! IC Air-Tight rated luminaires extend up to 90° from surface and rotate 350°, illuminating any direction needed. M-Wave downlights appear as puck lights, up to 1-3/8" off the surface when flush and delivering over 1250 lumens in 2700K or 3000K.

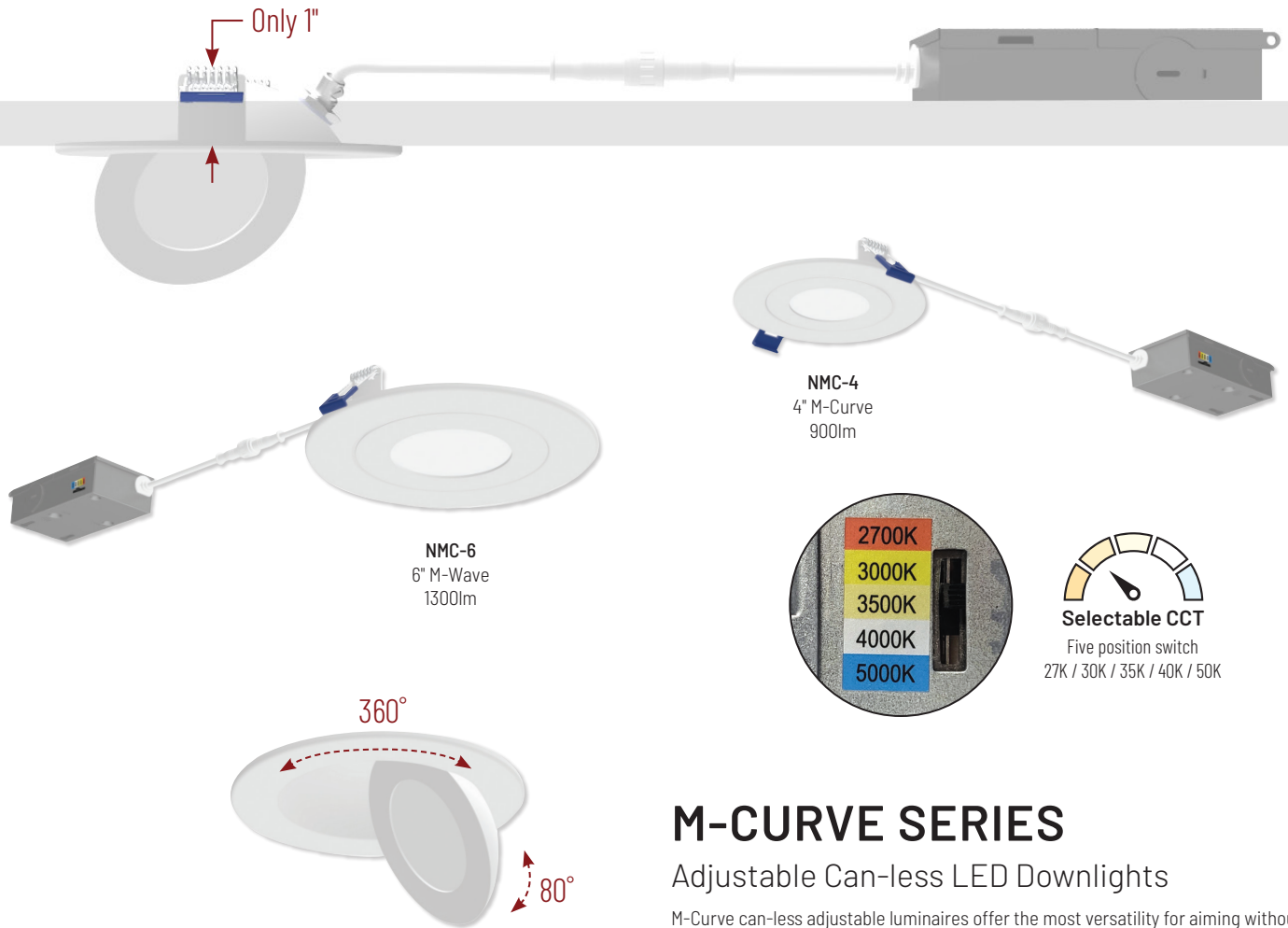


| | |
|---------------------------|--|
| APPLICATION: | Light Commercial and Residential |
| INSTALLATION: | Can-less |
| APERTURE: | 2" or 4" |
| LUMENS: | 750lm or 1250lm |
| COLOR TEMPERATURE: | 2700K or 3000K |
| DIMMING: | Triac or ELV |
| LISTINGS: | cULus listed for wet locations ENERGY STAR certified Certified to requirements of CA Title 24 JA8-2022 |





Scan QR code
for more information

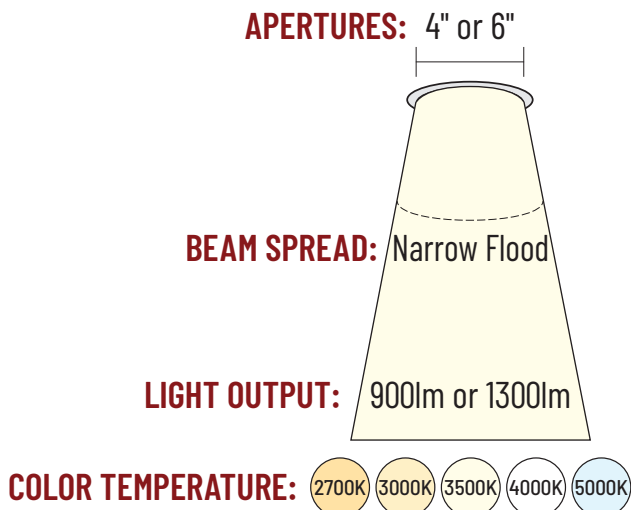


M-CURVE SERIES

Adjustable Can-less LED Downlights

M-Curve can-less adjustable luminaires offer the most versatility for aiming without any housing needed! IC Air-Tight rated luminaires extend up to 80° from surface and rotate 360°, illuminating any direction needed. Delivering over 1300 lumens with a Selectable CCT switch located on the junction box of each luminaire and a quick connect that allows for easy mounting in the ceiling.

| | |
|---------------------------|---|
| APPLICATION: | Light Commercial and Residential |
| INSTALLATION: | Can-less |
| APERTURE: | 4" or 6" |
| LUMENS: | 900lm or 1300lm |
| COLOR TEMPERATURE: | Selectable CCT (27K / 30K / 35K / 40K / 50K) |
| DIMMING: | Triac or ELV |
| LISTINGS: | cETLus listed for wet locations ENERGY STAR certified Certified to requirements of CA Title 24 JA8-2022 |

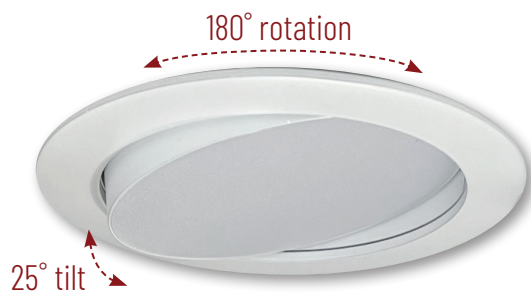




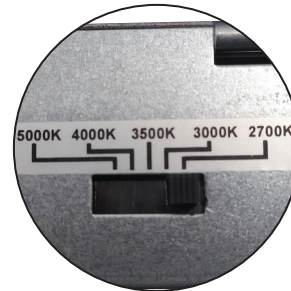
Scan QR code
for more information



NFLINA-R4TWMPW
4" FLIN Adjustable
900lm



NFLINA-R6TWMPW
6" FLIN Adjustable
1100lm



Selectable CCT
Five position switch
27K / 30K / 35K / 40K / 50K

FLIN ADJUSTABLE

Adjustable Can-less LED Downlights

FLIN Adjustable LED downlights feature two-axis rotation with 25° tilt and 180° rotation. IC Air-Tight rated luminaires are designed for easy installation into new construction or remodel applications. Delivering up to 1100 lumens with a Selectable CCT switch located on the junction box of each luminaire and a quick connect that allows for easy mounting in the ceiling.

APERTURES: 4" or 6"

BEAM SPREAD: Wide Flood

LIGHT OUTPUT: 900lm or 1100lm

COLOR TEMPERATURE: 2700K 3000K 3500K 4000K 5000K

| | |
|---------------------------|---|
| APPLICATION: | Light Commercial and Residential |
| INSTALLATION: | Can-less |
| APERTURES: | 4" or 6" |
| LUMENS: | 900lm or 1100lm |
| COLOR TEMPERATURE: | Selectable CCT (27K / 30K / 35K / 40K / 50K) |
| DIMMING: | Triac or ELV |
| LISTINGS: | cETLus listed for wet locations ENERGY STAR certified Certified to requirements of CA Title 24 JA8-2022 |





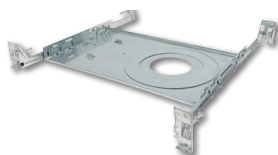
Scan QR code
for more information



NFLAT-R6TWMPW
6" FLAT
1050lm



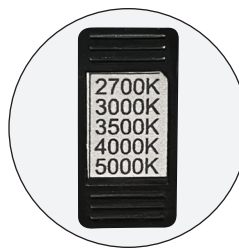
NFLAT-R4TWMPW
4" FLAT
700lm



New Construction
frames available



Extension Cables
available



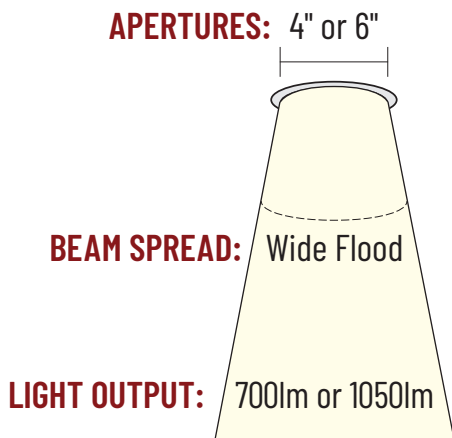
Selectable CCT
Five position switch
27K / 30K / 35K / 40K / 50K

FLAT

Non-Metallic Can-less LED Downlights

FLIN wafer LED downlights feature a non-metallic trim for corrosive environments. IC Air-Tight rated luminaires are designed for easy installation into new construction or remodel applications. Delivering over 1050 lumens with a Selectable CCT switch located on the junction box of each luminaire and a quick connect that allows for easy mounting in the ceiling.

| | |
|---------------------------|---|
| APPLICATION: | Light Commercial and Residential |
| INSTALLATION: | Can-less |
| APERTURES: | 4" or 6" |
| LUMENS: | 700lm or 1050lm |
| COLOR TEMPERATURE: | Selectable CCT (27K / 30K / 35K / 40K / 50K) |
| DIMMING: | Triac or ELV |
| LISTINGS: | cETLus listed for wet locations ENERGY STAR certified Certified to requirements of CA Title 24 JA8-2022 |



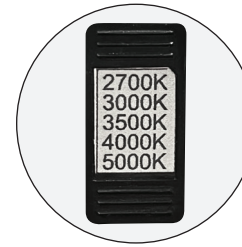
COLOR TEMPERATURE: 2700K 3000K 3500K 4000K 5000K



Scan QR code
for more information



NEFLINTW-R4MPW
4" Round



Selectable CCT
Five position switch
27K / 30K / 35K / 40K / 50K



NEFLINTW-S4MPW
4" Square



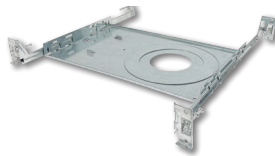
NEFLINTW-S6233MPW
6" Square



NEFLINTW-R6MPW
6" Round



Oversize Rings
available



New Construction
frames available



Extension Cables
available

FLIN

Wafer Can-less LED Downlights

FLIN LED downlights are thin at only 1-1/4" tall for remodel or new constructions in residential and light commercial applications. LED luminaires require no housing, making installation easy. IC Air-Tight rated luminaires deliver up to 1300 lumens and include a field selectable CCT switch. Each luminaire includes a pre-wired junction box with dimmable LED driver.

| | |
|---------------------------|---|
| APPLICATION: | Light Commercial and Residential |
| INSTALLATION: | Can-less |
| APERTURES: | 4" or 6" |
| LUMENS: | 650lm to 1300lm |
| COLOR TEMPERATURE: | Selectable CCT (27K / 30K / 35K / 40K / 50K) |
| DIMMING: | Triac or ELV |
| LISTINGS: | cETLus listed for wet locations ENERGY STAR certified Certified to requirements of CA Title 24 JA8-2022 |

APERTURES: 4" or 6"










BEAM SPREAD: Wide Flood

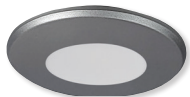
LIGHT OUTPUT: 650lm to 1300lm

COLOR TEMPERATURE: 2700K 3000K 3500K 4000K 5000K



Comparison of LED Surface Mounts

| | Name | Size | Lumens | CCT | Input Voltage | Dimming |
|--|----------------------------|---------------------------------|------------------|--|---------------|--------------|
|  | SURF | 4" & 7" Round 4" & 6" Square | 750lm to 1150lm | Dedicated 27K, 30K, 35K, 40K, 50K | 120V | Triac or ELV |
|  | SLIM | 4" | 800lm | Selectable 27K, 30K, 35K, 40K, 50K | 120V | Triac or ELV |
|  | ELO | 6", 8" and 11" | 1080lm to 1700lm | Dedicated 3000K | 120V | Triac or ELV |
|  | ELO+ | 4", 6", 8" and 11" | 640lm to 1700lm | Dedicated 27K, 30K, 35K, 40K, 50K | 120V | Triac or ELV |
|  | 16" ELO | 16" | 2100lm | Dedicated 27K, 30K, 40K | 120-277V | Triac or ELV |
|  | wELO | 8" and 11" | 1000lm or 1550lm | Dedicated 27K, 30K, 35K, 40K | 120-277V | 0-10V |
|  | REGRESSED OPAL | 4" and 6" | 700lm or 950lm | Dedicated 27K, 30K, 40K | 120V | Triac or ELV |
|  | OPAL | 4", 6" and 8" | 700lm to 2150lm | Dedicated or Selectable 27K, 30K, 35K, 40K, 50K | 120V | Triac or ELV |
|  | OPAL WITH MOTION SENSOR | 7" | 1050lm | Dedicated 3000K or 4000K | 120V | - |



| Name | Accessory | Installation Type | Rating | Title 24 | Listing |
|--|-----------------------|----------------------------|----------------------|----------|---------|
| SURF (continued) | - | Surface Mount | Suitable for Closets | Yes | Wet |
| SLIM (continued) | Round Decorative Ring | Surface Mount or Retrofit | Suitable for Closets | Yes | Wet |
| ELO (continued) | - | Surface Mount or Retrofit | Suitable for Closets | No | Damp |
| ELO+ (continued) | Decorative Rings | Surface Mount or Retrofit | Suitable for Closets | Yes | Damp |
| 16" ELO (continued) | Stem or Pendant Kit | Surface Mount or Suspended | Suitable for Closets | Yes | Damp |
| wELO (continued) | - | Surface Mount | Suitable for Closets | No | Wet |
| REGRESSED OPAL (continued) | - | Surface Mount or Retrofit | Suitable for Closets | Yes | Wet |
| OPAL (continued) | - | Surface Mount or Retrofit | Suitable for Closets | Yes | Wet |
| OPAL WITH MOTION SENSOR (continued) | - | Surface Mount or Retrofit | Suitable for Closets | No | Wet |



Scan QR code
for more information



Surface Mount
over 4" octagonal
junction box



50K
40K
35K
30K
27K



Selectable CCT

Five position switch
27K / 30K / 35K / 40K / 50K



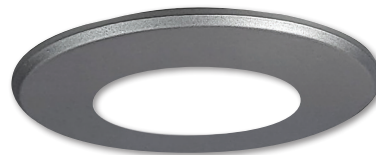
Retrofit
over 4" recessed
 housings



NSLIM-4RL1TWMPW
4" Slim LED luminaire



NSLIM-4RDTB
Black Ring



NSLIM-4RDTs
Silver Ring

SLIM

LED Surface Mounts

Slim LED surface mount luminaires easily install over 4" octagonal junction boxes. Alternatively an optional retrofit kit is also included to install over 4" recessed housings. Luminaires provide over 800 lumens and include a selectable CCT switch to change the color temperature from 2700K / 3000K / 3500K / 4000K / 5000K.

APERTURE:

4"

BEAM SPREAD: Wide Flood

LIGHT OUTPUT:

800lm

COLOR TEMPERATURE:



| | |
|---------------------------|--|
| APPLICATION: | Light Commercial and Residential |
| INSTALLATION: | New Construction and Remodel |
| APERTURE: | 4" |
| LUMENS: | 800lm |
| COLOR TEMPERATURE: | Selectable CCT (27K / 30K / 35K / 40K / 50K) |
| DIMMING: | Triac or ELV |
| LISTINGS: | cULus listed for indoor wet locations ENERGY STAR certified Certified to requirements of CA Title 24 JA8-2022 Suitable for use in closets |





Scan QR code
for more information



NLOS-R42L
4" Round



NLOS-R72L
7" Round



NLOS-S62L
6" Square



NLOS-S42L
4" Square

SURF

LED Surface Mounts

SURF LED Edge-Lit surface mount luminaires feature a regressed light guide with embedded honeycomb lens. Light guide provides comfortable glare free lighting not found in other surface mount luminaires to resemble recessed lighting. Luminaires easy mount over a junction box and available in round or square sizes in 2700K, 3000K, 3500K, 4000K or 5000K.

APERTURES: 4", 6", 7"

BEAM SPREAD: Wide Flood

LIGHT OUTPUT: 750lm to 1150lm

COLOR TEMPERATURE: 2700K 3000K 3500K 4000K 5000K

| | |
|---------------------------|---|
| APPLICATION: | Light Commercial and Residential |
| INSTALLATION: | New Construction and Remodel |
| APERTURES: | 4", 6" and 7" |
| LUMENS: | 750lm to 1150lm |
| COLOR TEMPERATURE: | 2700K, 3000K, 3500K, 4000K, 5000K |
| DIMMING: | Triac or ELV |
| LISTINGS: | cULus listed for wet locations ENERGY STAR certified Certified to requirements of CA Title 24 JA8-2022 Suitable for use in closets |





Scan QR code
for more information



NELOCAC-11RP
11" ELO+



NELOCAC-6RP
6" ELO+



Decorative Rings
available



Retrofit Kit
included



NELOCAC-16R
16" ELO



NELOCAC-8RP
8" ELO+

NELOCAC-PK
Pendant Kit

ELO

LED Surface Mounts

ELO LED Surface mount luminaires are only ½" thick (16" is 1" thick) for a minimalist appearance. Luminaires can be surface mounted over a junction box or retrofit into recessed housings with a retrofit kit. Decorative rings easily change the finish to match any decor or hardware in the vicinity. Five sizes are available in 2700K, 3000K, 3500K, 4000K or 5000K.

APERTURES: 4" to 16"

BEAM SPREAD: Wide Flood

LIGHT OUTPUT: 640lm to 2100lm

COLOR TEMPERATURE: 2700K 3000K 3500K 4000K 5000K

| | |
|---------------------------|---|
| APPLICATION: | Light Commercial and Residential |
| INSTALLATION: | New Construction and Remodel |
| APERTURES: | 4", 6", 8", 11" and 16" |
| LUMENS: | 640lm, 700lm, 1100lm, 1700lm or 2100lm |
| COLOR TEMPERATURE: | 2700K, 3000K, 3500K, 4000K, 5000K |
| DIMMING: | Triac or ELV |
| LISTINGS: | cETLus listed for damp locations ENERGY STAR certified Certified to requirements of CA Title 24 JA8-2022 Suitable for use in closets |





Scan QR code
for more information



NWEL0-11R
11" wELO



NWEL0-8R
8" wELO

wELO

LED Surface Mounts

wELO LED Surface mount luminaires are 1" thick with a water tight gasket. Fixtures are available in 8" or 11" diameter and easily mount over a standard or fire rated junction boxes. Commercial grade fixtures accept universal voltage input (120-277V) with 0-10V dimming protocol. Dedicated color temperature options include 2700K, 3000K, 3500K or 4000K at 80+ CRI.

APERTURES: 8" or 11"

BEAM SPREAD: Wide Flood

LIGHT OUTPUT: 1000lm or 1550lm

COLOR TEMPERATURE:



| | |
|---------------------------|---|
| APPLICATION: | Commercial and Architectural |
| INSTALLATION: | New Construction and Remodel |
| APERTURES: | 8" or 11" |
| LUMENS: | 1000lm or 1550lm |
| COLOR TEMPERATURE: | 2700K, 3000K, 3500K, 4000K |
| DIMMING: | 0-10V |
| LISTINGS: | cETLus listed for wet locations ENERGY STAR certified Suitable for use in closets |





Scan QR code
for more information



NLOPAC-R8T24
8" T24 Opal



NLOPAC-R6REGT24
6" Regressed Opal



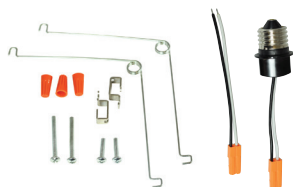
NLOPAC-R6TW
6" Opal with Selectable CCT



NLOPAC-R4509T24
4" T24 Opal



NLOPAC-R7MS
7" Opal with Motion Sensor



Retrofit Kit
included

OPAL

LED Surface Mounts

Opal LED luminaires are designed to surface mount over a junction box or retrofit over recessed housings. Opal produces an even illumination with no diode image, from bright to dim. The low profile unit is available in four sizes and three types: standard, regressed or 7" motion sensor. Available in three finishes and delivering up to 2150 lumens in 2700K, 3000K, 3500K, 4000K or 5000K.

APERTURES: 4", 6", 7", 8"

BEAM SPREAD: Wide Flood

LIGHT OUTPUT: 700lm to 2150lm

COLOR TEMPERATURE: 2700K 3000K 3500K 4000K 5000K

| | |
|---------------------------|---|
| APPLICATION: | Light Commercial and Residential |
| INSTALLATION: | New Construction and Remodel |
| APERTURES: | 4", 6", 7" and 8" |
| LUMENS: | 700lm, 900lm, 1000lm, 1150lm or 2150lm |
| COLOR TEMPERATURE: | 2700K, 3000K, 3500K, 4000K, 5000K |
| DIMMING: | Triac or ELV |
| LISTINGS: | cULus listed for wet locations ENERGY STAR certified Certified to requirements of CA Title 24 JA8-2022 Suitable for use in closets |





NORA LIGHTING, INC.
6505 Gayhart St.
Commerce, CA 90040
TEL 323.767.2600
FAX 323.722.3677
www.NoraLighting.com

DOMESTIC FACILITIES:
Atlanta, GA
Cincinnati, OH
Dallas, TX
Detroit, MI
Edison, NJ
Los Angeles, CA
Louisville, KY
Minneapolis, MN
Nashville, TN

INTERNATIONAL SALES:
6505 Gayhart St.
Commerce, CA 90040
TEL 323.767.2600
FAX 323.722.3677

The products shown in this catalog are covered by USA and International patents. Specifications subject to change without notice.

© Copyright 2023 Nora Lighting, Inc. All rights reserved

6M ML-RECLEDD0923