

NHIC-926LMRAT

6" Sloped IC Air-Tight LED Dedicated New Construction Housing
(Compatible with Sloped LED Retrofits)

Type

Project

Catalog No.

Notes

PRODUCT DESCRIPTION

Dedicated new construction housing for sloped ceiling with a 6/12 pitch ceiling. Air-tight housing additionally reduces energy costs by decreasing the flow of air escaping through the ceiling. Rated for direct contact with insulation and adjacent ceiling structures. The housing is labeled for use with 6" Sloped LED retrofits.

FEATURES

- IC rated for direct contact with insulation
- Quick connect provided for electrical connection to the LED downlights
- ASTM E283 for Air-Tight
- 24-1/2" bar hangers with captive nails and alignment foot

CONSTRUCTION

Plaster Frame: High quality 0.035 steel die cut one piece frame. Bar hanger brackets on all four sides provide two possible positions for installations. Integral brackets and winguts enable housing to be adjusted for 2/12 - 6/12 ceiling pitch.

Housing: 0.035 steel housing. Riveted wrap and dome cap construction. Integral fold-out torsion spring brackets. Knockouts near top of housing provided for coil springs.

Air Flow Restriction: Housing has factory installed gaskets to restrict airflow from room into ceiling plenum to <2CFM (cubic feet per minute) in accordance with ASTM-283 Air-Tight requirements.

Clearance: "IC" Insulated ceiling housings are direct contact rated. Not to be used in direct contact with spray foam insulation.

Bar Hangers: Two 13-3/4" to 24-1/2" adjustable bar hangers with captive nails are included on frame. Bar hangers are parallel to junction box, but can be repositioned 90° perpendicular to junction box if desired. "L" Shaped bar hanger foot to align to bottom of construction joist. A T-Bar notch allow for easy installation in a suspended ceiling.

Junction Box: Prewired 25 cubic inch 0.064" thick galvanized steel with seven 1/2" trade size knockouts and four Romex pryouts and snap on covers. All leads are #18AWG wire, the ground wire is connected to the bottom, and quick connectors are supplied on all leads. Maximum of 8 no. 12 AWG through branch circuit conductors suitable for at least 90°C permitted in junction box.

ELECTRICAL

Input Voltage: 120/277VAC

Socket: Quick connect for LED downlights

Operating Temperature: 122°F (50°C) max.

Dimming: Specified by luminaire

COMPATIBLE DOWNLIGHTS

[NLR5-611](#): 1200lm Sloped LED Retrofit Reflector with Selectable CCT

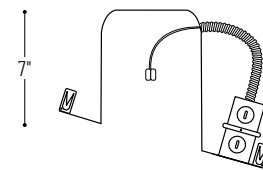
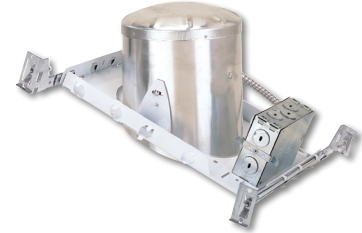
[NLR5-612](#): 1200lm Sloped LED Retrofit Baffle with Selectable CCT

LABELS AND LISTINGS

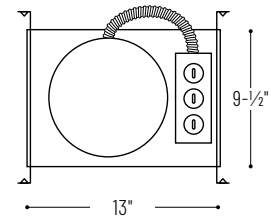
- cULus Listed for Damp Location
- Meets ASTM E283 Air-Tight requirements



PRODUCT IMAGES & DIMENSIONS



6-1/2" x 7"
Ceiling Cut-out



6" Sloped IC Air-Tight LED Dedicated New Construction Housing

Catalog No.

NHIC-926LMRAT = 6" Sloped LED Dedicated IC Air-Tight Housing, 120/277V input (120V Triac/ELV dimming)

Example: **NHIC-926LMRAT** = 6" Sloped IC Air-Tight LED Dedicated New Construction Housing, 120/277V input