

NEFLINTW-R4

4" E-Series FLIN Round LED Downlight with Selectable CCT

Source: 10.5W

Up to 900lm

PRODUCT DESCRIPTION

E-Series FLIN is a thin recessed LED designed for easy installation into new construction or remodel applications. Luminaires include a selectable color temperature switch located on the junction box of each luminaire with a quick connect that allows for easy disconnect and mounting in the ceiling.

FEATURES

- No housing required and includes junction box with class 2 driver
- Quick installation and cost savings
- Junction box includes kelvin temperature switch
- IC Air-Tight rated
- Field selectable color temperature
- Triac or ELV dimming
- cETLus Listed for Wet Locations
- 5-year limited warranty

SPECIFICATION

Construction: Die-cast aluminum luminaire with spring clips for easy installation. Gasket included for air-tight and wet location listing without additional caulking.

Air Flow Restriction: Luminaire has factory installed gasket to restrict airflow from room into ceiling plenum to <2CFM (cubic feet per minute) in accordance with ASTM-283 Air-Tight requirements.

Lens: Regressed lens with sharp baffle cuts reduces aperture brightness. Special polymer lens produces more usable light and lumens per watt.

Junction Box: Prewired junction box includes quick connect to LED fixtures for ease of installation. Junction box includes two 1/2" trade size and two 3/8" trade size knockouts and snap on cover. Maximum of 4 No. 12 AWG through branch circuit conductor suitable for 90°C permitted in box. [Fixture wire length: 9" and Junction box wire length: 9"]

Mounting: No housing is required, two tensions steel spring clips secure luminaires to the ceiling. Luminaires accept ceiling thicknesses from 3/8" to 5/8". New construction frame-in kits are available, see accessories.

Minimum clearance: "IC" Insulated ceiling housings are direct contact rated; no minimum clearance is required.

ELECTRICAL

Voltage: 120VAC or 120-277VAC
Lumens / Wattage: Up to 900lm / 10.5W

Color Temperature:
233 = 2700K / 3000K / 3500K (Note: Preset to 2700K)
345 = 3000K / 4000K / 5000K (Note: Preset to 3000K)

Color Rendering Index: 90+ CRI
Beam Spread: 116° Wide Flood
Operating Temperature: 0°C to 35°C

Lifetime: 50,000 hours @ L70
Dimming: Dimmable down to 10% with Triac or ELV dimmer
[Click Here](#) or check complete dimmer list at www.NoraLighting.com in the "Compatibility" page under "Resources" tab

OPTIONAL ACCESSORIES

NEFLINTW-4OR-MPW: Oversize Ring
NEFLINTW-EW-4: 4' Quick Connect Linkable Cable
NEFLINTW-EW-20: 20' Quick Connect Linkable Cable
NF-R246: Universal New Construction Frame-In

LABELS AND LISTINGS

- cETLus Listed for Wet location
- ENERGY STAR certified
- Certified to the high efficacy requirements of California Title 24 JA8-2019
- [5-Year Limited Warranty](#)
- FCC Compliant



Type

Project

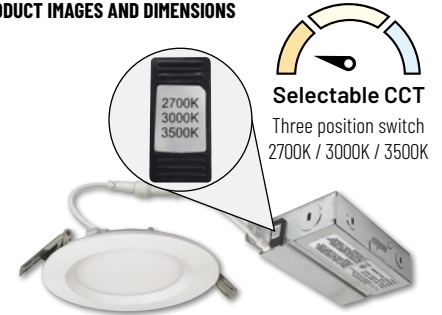
Catalog No.

Notes

Performance Data

Part Number	Lumens	CCT
NEFLINTW-R4233MPW	731lm	2700K
NEFLINTW-R4233MPW	796lm	3000K
NEFLINTW-R4233MPW	802lm	3500K
NEFLINTW-R4345MPW	865lm	3000K
NEFLINTW-R4345MPW	907lm	4000K
NEFLINTW-R4345MPW	886lm	5000K

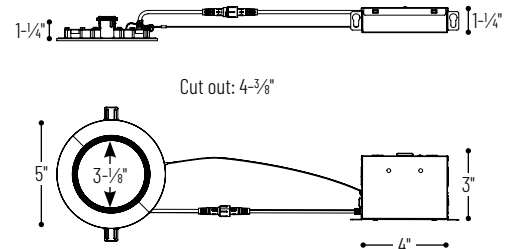
PRODUCT IMAGES AND DIMENSIONS



NEFLINTW-R4233MPW
2700K / 3000K / 3500K



NEFLINTW-R4345MPW
3000K / 4000K / 5000K



4" E-Series FLIN LED Round Downlight with Selectable CCT

Aperture	Color Temperature	Finish	Input Voltage
NEFLINTW-R4 = Round	233 = 2700K / 3000K / 3500K 345 = 3000K / 4000K / 5000K	MPW = Matte Powder White	(blank) = 120V LE4 = 120-277V

Optional Accessories

Description
NEFLINTW-4OR-MPW = Oversize Ring
NEFLINTW-EW-4 = 4' Quick Connect Extension Cable
NEFLINTW-EW-20 = 20' Quick Connect Extension Cable
NF-R246 = Universal New Construction Frame-In

Example: **NEFLINTW-R4233MPW** = 4" Round E-Series FLIN LED Downlight, Selectable CCT (2700K / 3000K / 3500K), Matte Powder White finish, 120V input

NEFLINTW-R4

4" Round E-Series FLIN LED Downlight Accessories

Type	_____
Project	_____
Catalog No.	_____
Notes	_____



Oversize Ring for Round

NEFLINTW-4OR-MPW

Oversize ring covers ceiling cut-outs up to 5-1/4"



Quick Connect Extension Cables

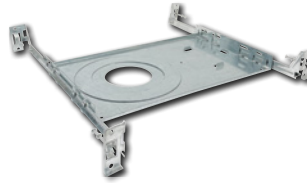
NEFLINTW-EW-4

4'

NEFLINTW-EW-20

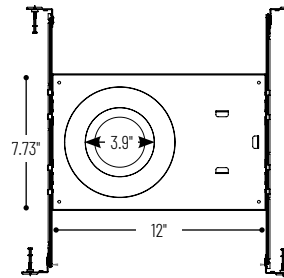
20'

Used to extend the length between luminaire and pre-wired junction box.



Universal New Construction Frame-In
NF-R246

Universal new construction frame-in can be used to assist installing can-less recessed downlighting.



PHOTOMETRICS

NEFLINTW-R4233MPW

4" E-Series FLIN LED Downlight with Selectable CCT

Type

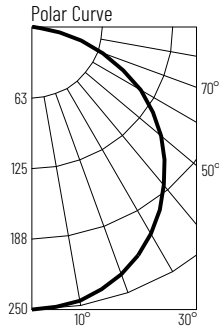
Project

Catalog No.

Notes

Test Information

Test Number: NTR1600R1
 Part Number: NEFLINTW-R4233MPW
 Beam Spread: 113° Wide Flood
 Lumens: 731lm
 Wattage: 9.72W
 Efficacy: 75lpw
 CCT / CRI: 2700K / 90 CRI
 Spacing Criteria (0°-180): 1.26
 Spacing Criteria (90°-270): 1.28



Illuminance at a Distance

Distance from Luminaire	FC at Nadir	Beam Diameter
4'	15.7fc	12"-2"
6'	7fc	18"-4"
8'	3.9fc	24"-4"
10'	2.5fc	30"-5"
12'	1.7fc	36"-6"

Zonal Lumen Summary

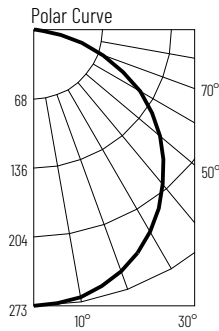
Zone	Lumens	% Luminaire
0-30	195	26.7
0-40	319	43.7
0-60	566	77.4
0-90	715	97.8
90-180	16	2.2
0-180	731	100

Candela Table

Vertical Angles	Candela
0	250
5	249
15	241
25	223
35	198
45	167

Test Information

Test Number: NTR1601R1
 Part Number: NEFLINTW-R4233MPW
 Beam Spread: 113° Wide Flood
 Lumens: 796lm
 Wattage: 9.35W
 Efficacy: 85lpw
 CCT / CRI: 3000K / 90 CRI
 Spacing Criteria (0°-180): 1.26
 Spacing Criteria (90°-270): 1.28



Illuminance at a Distance

Distance from Luminaire	FC at Nadir	Beam Diameter
4'	17fc	12"-2"
6'	7.6fc	18"-2"
8'	4.3fc	24"-4"
10'	2.7fc	30"-5"
12'	1.9fc	36"-6"

Zonal Lumen Summary

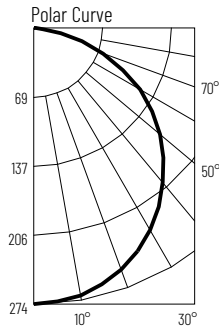
Zone	Lumens	% Luminaire
0-30	212	26.7
0-40	347	43.7
0-60	616	77.4
0-90	778	97.8
90-180	18	2.2
0-180	796	100

Candela Table

Vertical Angles	Candela
0	273
5	271
15	262
25	244
35	216
45	182

Test Information

Test Number: NTR1602R1
 Part Number: NEFLINTW-R4233MPW
 Beam Spread: 113° Wide Flood
 Lumens: 802lm
 Wattage: 9.76W
 Efficacy: 82lpw
 CCT / CRI: 3500K / 90 CRI
 Spacing Criteria (0°-180): 1.26
 Spacing Criteria (90°-270): 1.28



Illuminance at a Distance

Distance from Luminaire	FC at Nadir	Beam Diameter
4'	17.2fc	12"-2"
6'	7.6fc	18"-2"
8'	4.3fc	24"-4"
10'	2.7fc	30"-5"
12'	1.9fc	36"-6"

Zonal Lumen Summary

Zone	Lumens	% Luminaire
0-30	214	26.6
0-40	350	43.6
0-60	620	77.4
0-90	784	97.7
90-180	18	2.3
0-180	802	100

Candela Table

Vertical Angles	Candela
0	274
5	273
15	264
25	245
35	218
45	183

PHOTOMETRICS

NEFLINTW-R4345MPW

4" E-Series FLIN LED Downlight with Selectable CCT

Type

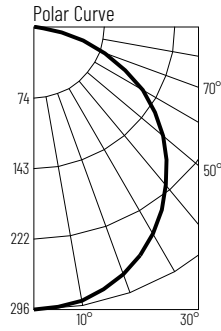
Project

Catalog No.

Notes

Test Information

Test Number: NTR1759R1
 Part Number: NEFLINTW-R4345MPW
 Beam Spread: 116° Wide Flood
 Lumens: 865lm
 Wattage: 9.85W
 Efficacy: 88lpw
 CCT / CRI: 3000K / 90 CRI
 Spacing Criteria (0°-180): 1.3
 Spacing Criteria (90°-270): 1.28



Illuminance at a Distance

Distance from Luminaire	FC at Nadir	Beam Diameter
4'	18.5fc	12'-10"
6'	8.2fc	19'-2"
8'	4.6fc	25'-7"
10'	3fc	32'
12'	2.1fc	38'-5"

Zonal Lumen Summary

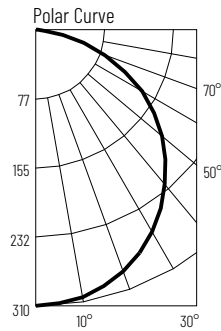
Zone	Lumens	% Luminaire
0-30	232	26.8
0-40	382	44.1
0-60	683	79
0-90	863	99.7
90-180	2	0.3
0-180	865	100

Candela Table

Vertical Angles	Candela
0	296
5	294
15	286
25	269
35	240
45	204

Test Information

Test Number: NTR1760R1
 Part Number: NEFLINTW-R4345MPW
 Beam Spread: 116° Wide Flood
 Lumens: 907lm
 Wattage: 9.45W
 Efficacy: 96lpw
 CCT / CRI: 4000K / 90 CRI
 Spacing Criteria (0°-180): 1.28
 Spacing Criteria (90°-270): 1.28



Illuminance at a Distance

Distance from Luminaire	FC at Nadir	Beam Diameter
4'	19.4fc	12'-10"
6'	8.6fc	19'-2"
8'	4.8fc	25'-8"
10'	3.1fc	32'-1"
12'	2.2fc	38'-6"

Zonal Lumen Summary

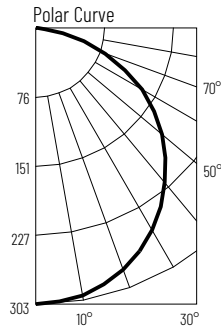
Zone	Lumens	% Luminaire
0-30	243	26.8
0-40	400	44.1
0-60	716	79
0-90	904	99.7
90-180	3	0.3
0-180	907	100

Candela Table

Vertical Angles	Candela
0	310
5	308
15	299
25	281
35	251
45	214

Test Information

Test Number: NTR1761R1
 Part Number: NEFLINTW-R4345MPW
 Beam Spread: 116° Wide Flood
 Lumens: 886lm
 Wattage: 9.83W
 Efficacy: 90lpw
 CCT / CRI: 5000K / 90 CRI
 Spacing Criteria (0°-180): 1.3
 Spacing Criteria (90°-270): 1.28



Illuminance at a Distance

Distance from Luminaire	FC at Nadir	Beam Diameter
4'	18.9fc	12'-10"
6'	8.4fc	19'-2"
8'	4.7fc	25'-7"
10'	3fc	32'
12'	2.1fc	38'-5"

Zonal Lumen Summary

Zone	Lumens	% Luminaire
0-30	237	26.8
0-40	391	44.1
0-60	700	79
0-90	884	99.7
90-180	3	0.3
0-180	886	100

Candela Table

Vertical Angles	Candela
0	303
5	301
15	293
25	275
35	246
45	209