

# NEFLINTW-R6

## 6" E-Series FLIN Round LED Downlight with Selectable CCT

Source: 13.5W

Up to 1250lm

### PRODUCT DESCRIPTION

E-Series FLIN is a thin recessed LED designed for easy installation into new construction or remodel applications. Luminaires include a selectable color temperature switch located on the junction box of each luminaire with a quick connect that allows for easy disconnect and mounting in the ceiling.

### FEATURES

- No housing required and includes junction box with class 2 driver
- Quick installation and cost savings
- Junction box includes kelvin temperature switch
- IC Air-Tight rated
- Field selectable color temperature
- Triac or ELV dimming
- cETLus Listed for Wet Locations
- 5-year limited warranty

### SPECIFICATION

**Construction:** Die-cast aluminum luminaire with spring clips for easy installation. Gasket included for air-tight and wet location listing without additional caulking.

**Air Flow Restriction:** Luminaire has factory installed gasket to restrict airflow from room into ceiling plenum to <2CFM (cubic feet per minute) in accordance with ASTM-283 Air-Tight requirements.

**Lens:** Regressed lens with sharp baffle cuts reduces aperture brightness. Special polymer lens produces more usable light and lumens per watt.

**Junction Box:** Prewired junction box includes quick connect to LED fixtures for ease of installation. Junction box includes two 1/2" trade size and two 3/8" trade size knockouts and snap on cover. Maximum of 4 No. 12 AWG through branch circuit conductor suitable for 90°C permitted in box. [Fixture wire length: 9" and Junction box wire length: 9"]

**Mounting:** No housing is required, two tensions steel spring clips secure luminaires to the ceiling. Luminaires accept ceiling thicknesses from 3/8" to 5/16". New construction frame-in kits are available, see accessories.

**Minimum clearance:** "IC" Insulated ceiling housings are direct contact rated; no minimum clearance is required.

### ELECTRICAL

**Voltage:** 120VAC or 120-277VAC  
**Lumens / Wattage:** Up to 1250lm / 13.5W  
**Color Temperature:** 2700K / 3000K / 3500K (Note: Preset to 2700K)  
**Color Rendering Index:** 90+ CRI  
**Beam Spread:** 116° Wide Flood  
**Operating Temperature:** 0°C to 35°C  
**Lifetime:** 50,000 hours @ L70  
**Dimming:** Dimmable down to 10% with Triac or ELV dimmer [Click Here](#) or check complete dimmer list at [www.NoraLighting.com](http://www.NoraLighting.com) in the "Compatibility" page under "Resources" tab

### OPTIONAL ACCESSORIES

**NEFLINTW-6OR-MPW:** Oversize Ring  
**NF-R246:** Universal New Construction Frame-In  
**NEFLINTW-EW-4:** 4' Quick Connect Linkable Cable  
**NEFLINTW-EW-20:** 20' Quick Connect Linkable Cable

### LABELS AND LISTINGS

- cETLus Listed for Wet location
- ENERGY STAR certified
- Certified to the high efficacy requirements of California Title 24 JA8-2019
- [5-Year Limited Warranty](#)
- FCC Compliant



Type

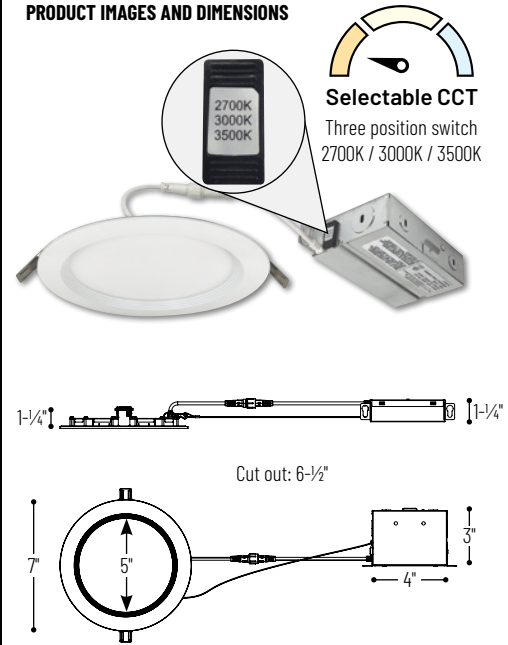
Project

Catalog No.

Notes

Performance Data		
Part Number	Lumens	CCT
NEFLINTW-R6233MPW	1117lm	2700K
NEFLINTW-R6233MPW	1214lm	3000K
NEFLINTW-R6233MPW	1250lm	3500K

### PRODUCT IMAGES AND DIMENSIONS



## 6" E-Series FLIN LED Round Downlight with Selectable CCT

Description

**NEFLINTW-R6233MPW** = 2700K / 3000K / 3500K, 120V input  
**NEFLINTW-R6233MPWLE4** = 2700K / 3000K / 3500K, 120-277V input  
**NEFLINTW-R6345MPW** = 2700K / 3000K / 3500K, 120V input (Discontinued, direct replacement: [NEFLINTW-R6MPWLE4](#))  
**NEFLINTW-R6345MPWLE4** = 2700K / 3000K / 3500K, 120-277V input (Discontinued, direct replacement: [NEFLINTW-R6MPWLE4](#))

## Optional Accessories

Description

**NEFLINTW-6OR-MPW** = Oversize Ring  
**NF-R246** = Universal New Construction Frame-In  
**NEFLINTW-EW-4** = 4' Quick Connect Extension Cable  
**NEFLINTW-EW-20** = 20' Quick Connect Extension Cable

Example: **NEFLINTW-R6233MPW** = 6" Round E-Series FLIN LED Downlight, Selectable CCT (2700K / 3000K / 3500K), Matte Powder White finish, 120V input

# NEFLINTW-R6

6" E-Series FLIN LED Downlight Accessories

Type \_\_\_\_\_

Project \_\_\_\_\_

Catalog No. \_\_\_\_\_

Notes \_\_\_\_\_



Oversize Ring for Round

### NEFLINTW-60R-MPW

Oversize ring covers ceiling cut-outs up to 7-1/4"



Quick Connect Extension Cables

### NEFLINTW-EW-4

4'

### NEFLINTW-EW-20

20'

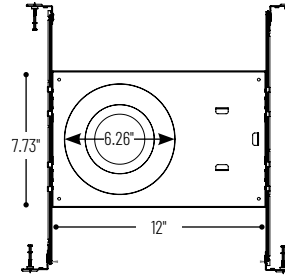
Used to extend the length between luminaire and pre-wired junction box.



Universal New Construction Frame-In

### NF-R246

Universal new construction frame-in can be used to assist installing can-less recessed downlighting.



# PHOTOMETRICS

## NEFLINTW-R6233MPW

6" E-Series FLIN LED Downlight with Selectable CCT

Type

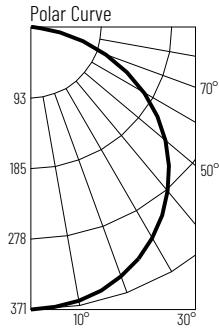
Project

Catalog No.

Notes

### Test Information

Test Number: NTR1603R1  
 Part Number: NEFLINTW-R6233MPW  
 Beam Spread: 116° Wide Flood  
 Lumens: 1117lm  
 Wattage: 13.42W  
 Efficacy: 83lpw  
 CCT / CRI: 2700K / 90 CRI  
 Spacing Criteria (0°-180): 1.3  
 Spacing Criteria (90°-270): 1.3



### Illuminance at a Distance

Distance from Luminaire	FC at Nadir	Beam Diameter
4'	23.2fc	12'-10"
6'	10.3fc	19'-2"
8'	5.8fc	25'-7"
10'	3.7fc	32'
12'	2.6fc	38'-5"

### Zonal Lumen Summary

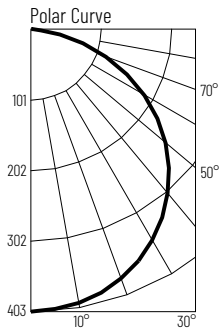
Zone	Lumens	% Luminaire
0-30	291	26.1
0-40	480	42.9
0-60	860	77
0-90	1092	97.8
90-180	20	1.7
0-180	1117	100

### Candela Table

Vertical Angles	Candela
0	371
5	368
15	358
25	335
35	301
45	257

### Test Information

Test Number: NTR1604R1  
 Part Number: NEFLINTW-R6233MPW  
 Beam Spread: 116° Wide Flood  
 Lumens: 1214lm  
 Wattage: 12.94W  
 Efficacy: 94lpw  
 CCT / CRI: 3000K / 90 CRI  
 Spacing Criteria (0°-180): 1.3  
 Spacing Criteria (90°-270): 1.3



### Illuminance at a Distance

Distance from Luminaire	FC at Nadir	Beam Diameter
4'	25.2fc	12'-10"
6'	11.2fc	19'-4"
8'	6.3fc	25'-8"
10'	4fc	32'-1"
12'	2.8fc	38'-6"

### Zonal Lumen Summary

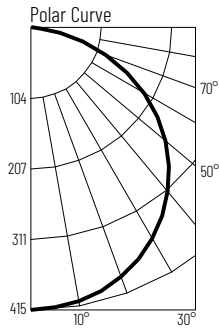
Zone	Lumens	% Luminaire
0-30	316	26
0-40	521	42.9
0-60	934	77
0-90	1187	97.8
90-180	27	2.2
0-180	1214	100

### Candela Table

Vertical Angles	Candela
0	403
5	402
15	389
25	365
35	329
45	279

### Test Information

Test Number: NTR1605R1  
 Part Number: NEFLINTW-R6233MPW  
 Beam Spread: 116° Wide Flood  
 Lumens: 1250lm  
 Wattage: 13.47W  
 Efficacy: 93lpw  
 CCT / CRI: 3500K / 90 CRI  
 Spacing Criteria (0°-180): 1.3  
 Spacing Criteria (90°-270): 1.3



### Illuminance at a Distance

Distance from Luminaire	FC at Nadir	Beam Diameter
4'	25.9fc	12'-11"
6'	11.5fc	19'-4"
8'	6.5fc	25'-8"
10'	4.2fc	32'-1"
12'	2.9fc	38'-7"

### Zonal Lumen Summary

Zone	Lumens	% Luminaire
0-30	325	26
0-40	536	42.9
0-60	962	77
0-90	1222	97.8
90-180	28	2.2
0-180	1250	100

### Candela Table

Vertical Angles	Candela
0	415
5	414
15	402
25	377
35	338
45	288